



# Center for Instructional Excellence

## Spring 2012 College Teaching Workshops

### *Building on the Basics – Workshops for Faculty, Staff & Graduate Students*

*Take one, several, or the entire series!*

#### Student-Teacher Relationships

Strategies you can use to foster good relationships with your students. Common disruptive student behaviors, and techniques for handling classroom crises.

Tuesday, January 17,  
9:00-10:30 am - STEW 310



#### The Nuts & Bolts of Setting Rules for Your Course

Key University policies that relate to teaching at Purdue, including how to create an attendance policy, handle make-up work, and avoid grade appeals.

Tuesday, January 24,  
9:00-10:30 am - STEW 310



#### Designing a Course From Scratch

The basics of designing a course from scratch using course goals and objectives, activities to meet your objectives, and measurements to see if your students have achieved them.

Tuesday, January 31,  
9:00-10:30 am - STEW 310

#### How to Avoid Giving a Bad Presentation

Strategies for preparing and delivering an effective presentation. How to attract your students' attention, improve your presentation techniques, and build effective PowerPoint presentations.

Tuesday, February 7,  
9:00-10:30 am - STEW 322

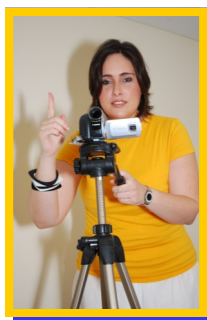
#### Micro-Teaching: Practice Your Teaching

In this workshop, you'll present a short lesson to a group of your peers who will role-play the students in your class. Besides getting feedback on your presentation, you'll have a videotape to include in your teaching portfolio.

Contact Juan Velasquez to register:

[jvelasqu@purdue.edu](mailto:jvelasqu@purdue.edu)

Tuesday, February 14,  
8:30-10:30 am



#### Getting Feedback to Improve Your Teaching

Ways to get feedback from your students that will improve learning, tweak your teaching, and teach your students to take responsibility for giving people feedback.

Tuesday, February 21,  
9:00-10:30 am - STEW 322

#### Creating the Engaged Classroom:

##### Discussion Techniques

Engaging your students in the learning process using think-pair-share, group discussions, and small group work.

Tuesday, February 28,  
9:00-10:30 am - STEW 322



#### Tools and Techniques for Creating Effective Tests

How to avoid writing test questions that your students might consider to be "picky," "tricky," or "ambiguous." What goes into making a good test, and how tests can be used to enhance student learning.

Tuesday, March 20,  
9:00-10:30 am - STEW 322



#### Why Didn't I Get an "A"? Using Subjective Tests and Assigning Grades

The benefits and challenges of using (and grading) subjective tests. Practice creating a rubric to use when grading student projects.

Tuesday, March 27,  
9:00-10:30 am - STEW 322

#### Are Your Students Cheating? How to Prevent and Respond

Ways to prevent academic dishonesty (and other academic integrity issues) and find resources to deal with a cheating incident should one occur.

Tuesday, April 3,  
9:00-10:30 am - STEW 322



Register for Series I Workshops:  
[www.purdue.edu/cie](http://www.purdue.edu/cie)



Find Us on Facebook! Center for Instructional Excellence