

# POWER BI USER GROUP SESSION 1

**Facilitated by:**  
Steve Dunlop  
Angus McLeod  
Roy Vasher

**Guest Presenter:**  
Tom Cunningham, Evonik



# Agenda

- Introductions
- Objectives
- Power BI Capabilities and Cost
- Use cases
- New Users: How to get started
- Instructions for Joining User Group
- Open discussion and next steps

# Introductions

- Name, company, position
- Power BI knowledge and experience
- What do you want to get out of user group?

No.	Type of User	Description
1	New	Never used, interested in learning how to use
2	Novice	Started to use but not created any business reports yet
3	Experienced User	Used for some time and developed business reports/dashboards
4	Power User	Expert user and/or IT Developer
5	Senior Manager	Interested in Capabilities for Business Reporting/Dashboards

# Overview: Objectives

- Create a forum where participants can learn from each other:
  - Power BI to create visualization of business data to make smart decisions faster
  - Participants share examples of business visualizations to show different use cases
  - Provide basic training resources for new users
- Create a Blog where participants can:
  - Post question and receive feedback from others
  - Post ideas that may help others (i.e., tips and tricks)
  - Post success stories

# Overview: Who Should Join

- New users that are interested in learning how to use Power BI
- Experienced users that have successfully implemented Power BI
- Business leaders that want to learn how Power BI can provide information to make decisions



# Power BI Overview – Data Mining Barriers Removed

## Turning Data into Information, Knowledge, and Opportunities

1

Traditional BI platforms required IT to install a data warehouse, integrate it with the transactional applications, model the data, and build dashboards and reports for the business users.

2

With **modern Business Intelligence tools**, performance is significantly faster, allowing business users to interact with data and gain more real-time insights.

3

Power BI comes into play as a **collection of software services, apps, and connectors that work together to turn your unrelated sources of data into coherent, visually immersive, and interactive insights**. Your data may be an Excel spreadsheet, or a collection of cloud-based and on-premises hybrid data warehouses. Power BI lets you easily connect to your data sources, visualize and discover what's important, and share that with anyone or everyone you want.



[Video Intro](#)



[3 License Levels](#)

# Power BI Overview

## Power BI is a core component of the platform

### Power BI

Business analytics

Pull your unrelated data sources into one simple view

Find and share meaningful insights with hundreds of data visualizations, built-in AI capabilities, tight Excel integration, and data connectors.

**Our Focus**

### Power Apps

Application development

Start building and launching apps right away using pre-built templates, drag-and-drop simplicity, and quick deployment

Provide professional developers the tools to seamlessly extend app capabilities

### Power Automate

Process automation

Automate time-consuming manual tasks giving you more time to focus on high-value actions.

Build secure workflows with a no-code guided experience and cloud-based management services.

### Power Virtual Agents

Intelligent chat bots

Create powerful chatbots—without the need for developers or data scientists—by using a guided, no-code graphical interface.

Monitor and continuously improve chatbot performance using data-driven insights.

- The Microsoft **Power Platform** is a business application platform that helps support and extend Microsoft 365, Dynamics 365, and Azure, as well as third-party services and applications.
- The **Power Platform** offers low-code automation, actionable data-driven applications, customizable business logic and smart chat-bots that can improve business processes, systems, and workflows.
- **Power BI** is used to model data for analysis and surface insights.

# Power BI Costs

Author	Share and collaborate	Scale large deployments
Power BI Desktop	Power BI Pro	Power BI Premium
Free	\$9.99 per user per month	Capacity pricing per node per month
<a href="#">DOWNLOAD FREE &gt;</a>	<a href="#">TRY FREE &gt;</a>	<a href="#">PLAN YOUR COSTS &gt;</a>
<p>Connect to hundreds of <b>data sources</b></p> <p>Clean and prepare data using <b>visual tools</b></p> <p>Analyze and build stunning reports with <b>custom visualizations</b></p> <p>Publish to the Power BI service</p> <p>Embed in public websites</p>	<p>Build dashboards that deliver a 360-degree, real-time view of the business</p> <p>Keep data up-to-date automatically, including on-premises sources</p> <p>Collaborate on shared data</p> <p>Audit and govern how data is accessed and used</p> <p>Package content and distribute to users with apps</p>	<p>Gain dedicated capacity you allocate, scale, and control</p> <p>Distribute and <b>embed content</b> without purchasing per-user licenses</p> <p>Publish reports on-premises with Power BI Report Server</p> <p>Unlock more capacity and higher limits for your <b>Pro users</b></p>

Power BI has a set of low-risk entry points when compared to other Business Intelligence Solutions. The cloud service solution charges only have a Power BI cost of \$9.99/month per user with increased data storage up to 10GB, which you can try for **60 days for a free version trial**. There are three pricing plans as illustrated below from their [site](#).

<https://powerbi.microsoft.com/en-us/pricing/>



# Power BI Administration and Governance




## Power BI Governance and Deployment Approaches Must Answer These Questions

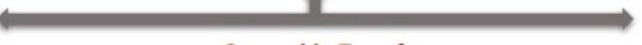


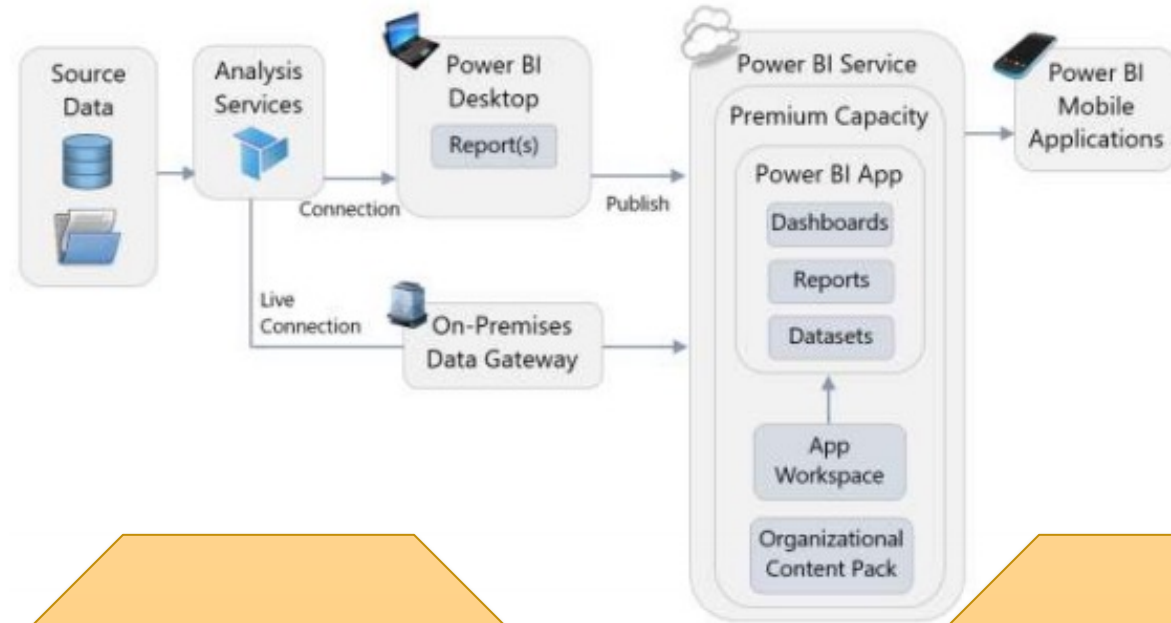
# Power BI Administration and Governance

## Power BI Governance and Deployment Approaches Must Provide Structure

### Power BI Delivery Approaches


Business-Led Self-Service BI	IT-Managed Self-Service BI	Corporate BI
 Bottom-Up Approach	 Blended Approach	 Top-Down Approach
Analysis using any type of data source; emphasis on data exploration and freedom to innovate	A "managed" approach wherein reporting utilizes only predefined/governed data sources	Utilization of reports and dashboards published by IT for business users to consume
<b>Ownership:</b> Business supports all elements of the solution	<b>Ownership:</b> IT: data + semantic layer Business: reports	<b>Ownership:</b> IT supports all elements of the solution
<b>Scope of Power BI use by business users:</b> Data preparation, data modeling, report creation & execution	<b>Scope of Power BI use by business users:</b> Creation of reports and dashboards	<b>Scope of Power BI use by business users:</b> Execution of published reports
<b>Governed by:</b> Business	<b>Governed by:</b> IT: data + semantic layer Business: reports	<b>Governed by:</b> IT

  
**Ownership Transfer**  
 Over time, certain self-service solutions deemed as critical to the business may transfer ownership and maintenance to IT. It's also possible for business users to adopt a prototype created by IT.



  
 Microsoft

Power BI Governance and Deployment Approaches  
 Whitepaper  
[Link to whitepaper](#)

  
 Microsoft

Planning a Power BI Enterprise Deployment  
[Link to whitepaper](#)

# Power BI Training

## A Multitude of Free Courses and Formats Are Available

Power BI Desktop

Get data  
Recent sources

GDP-Dashboard.pbix Desktop  
Covid-19 via Power BI.pbix \\americas.degussanet.com > dfs-...  
Open other reports

Thomas Cunningham

**WHAT'S NEW**  
Take a look at what's new and improved in Power BI in this month's update.

**FORUMS**  
Visit the Power BI Forum to ask questions or interact with other users in the Power BI community.

**POWER BI BLOG**  
Keep up to date with the latest news, resources, and updates from the Power BI team.

**TUTORIALS**  
Ready to learn more about Power BI?

- Get started with Power BI Desktop
- Download a sample
- Watch our training videos
- See what others have built
- All guided learning

Getting started with Power BI Desktop

Building reports  
Query view concepts  
Uploading your reports  
Create a Phone report

VIEW ALL VIDEOS

Show this screen on startup

[The Power BI Opening Screen](#)

[Microsoft Web Site](#)

[edX](#) (Free w/o Certificates)

[Udemy](#) (\$10 to \$20 per course)

[YouTube – Power BI Tutorials](#)

[Local and Global User Groups](#)

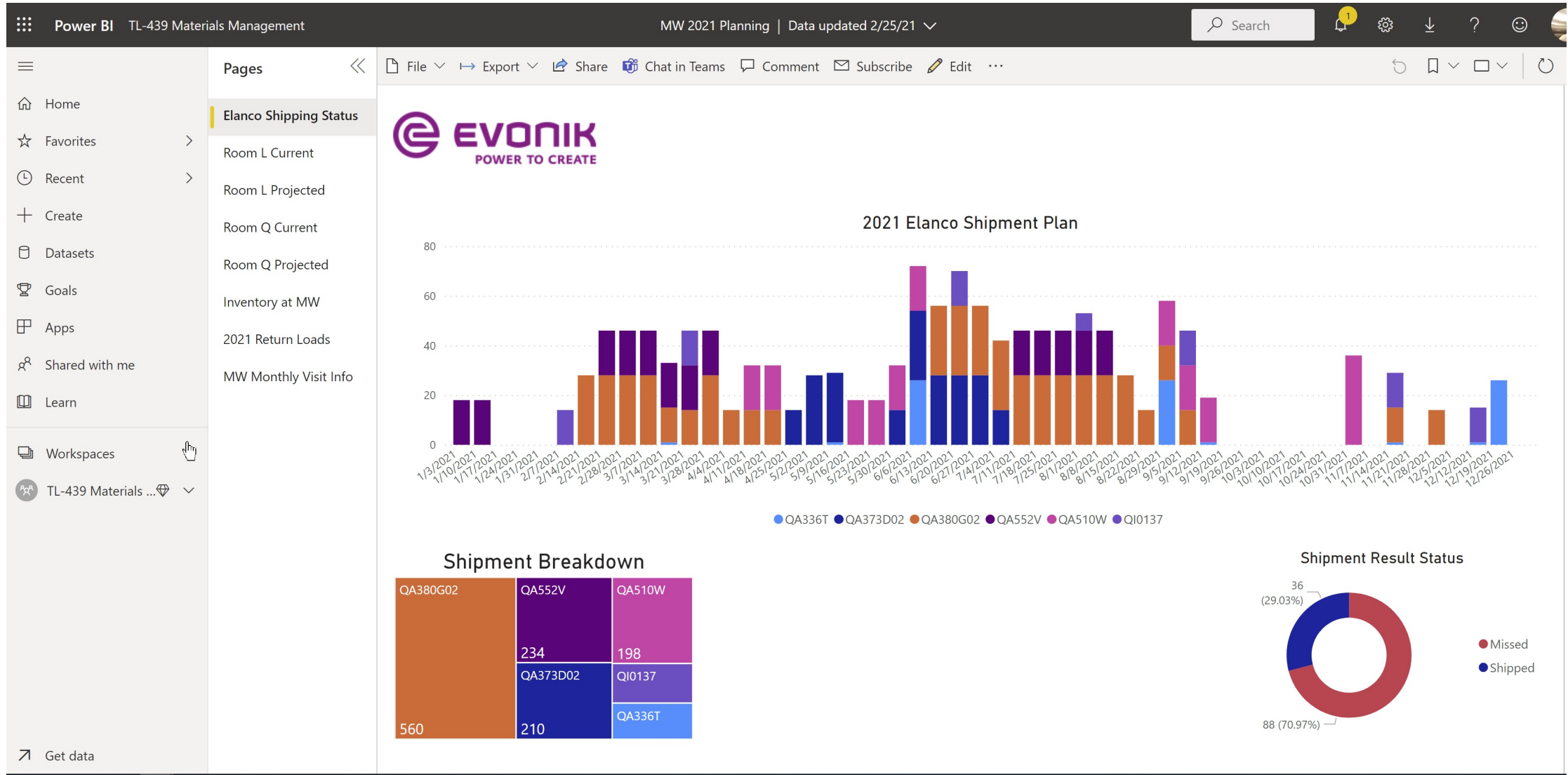
# Power BI Use Cases Demos

## Evonik Corporation Power BI Visual Management Solutions

- Contracted Chilled Warehouse Utilization Report  
[“MW 2021 Planning Report”](#)
- Power Platform Projects Dashboard  
[Link to Digital Activities Power BI Report](#)
- Manufacturing Execution System  
[Link to Dashboard Reports](#)

# Power BI Use Case #2 – Complex Schedule Visibility

## MW 2021 Planning Report



# Power BI Use Case #2 – Complex Schedule Visibility

## MW 2021 Planning Report

Power BI TL-439 Materials Management MW 2021 Planning | Data updated 2/25/21

---

**Pages**

- Elanco Shipping Status
- Room L Current
- Room L Projected
- Room Q Current
- Room Q Projected
- Inventory at MW**
- 2021 Return Loads
- MW Monthly Visit Info

### Merchandise Warehouse Inventory Dashboard

Filter By Room

 L 924  
 Spaces

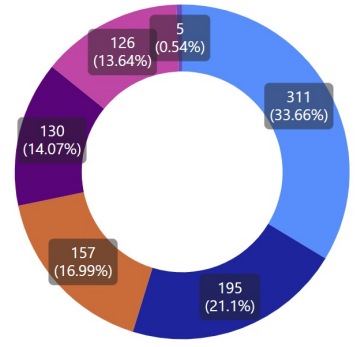
QA510KTOT
QA552V
QA380G02
QI0137
QA510W

#### Material Information

Material Code	Batch Number	Date to MW	Spaces
QI0137	2070070	February 8, 2019	7
QA380G02	2071860	May 29, 2019	2
QA380G02	2071910	May 29, 2019	2
QA552V	2073499	July 18, 2019	9
QI0137	2069663	September 6, 2019	7
QA510W	2076718	October 24, 2019	18
QI0137	2069761	November 6, 2019	4
QI0137	2077976	January 27, 2020	7
QI0137	2078221	February 5, 2020	7
QI0137	2079232	February 5, 2020	7
QI0137	2079333	February 19, 2020	7
QA552V	2079623	February 26, 2020	9
QA552V	2079625	February 27, 2020	9
QA510KTOT	0002081754 - A	June 15, 2020	7
QA510KTOT	0002081754 - B	June 15, 2020	7
QA510KTOT	0002082389 - A	June 16, 2020	7
QA510KTOT	0002082389 - B	June 16, 2020	7
<b>Total</b>			<b>924</b>

#### Rejected Material

Material Code	Batch Number	Date to MW	Spaces	Rejected
QA552V	2079625	February 27, 2020	9	X
QA552V	2079623	February 26, 2020	9	X
QA380G02	2071860	May 29, 2019	2	X
QA380G02	2071910	May 29, 2019	2	X
<b>Total</b>			<b>22</b>	



● QA510K... 
 ● QA552V 
 ● QA380G... 
 ● QI0137 
 ● QA510W 
 ● QA528H...

# Power BI Use Case #1 – Simple Schedule Visibility

Power BI Digital Projects Board

Digital Activities | Data updated 4/11/19

Search

File Export Share Chat in Teams Comment Subscribe Edit

Home Favorites Recent Create Datasets Goals Apps Shared with me Learn Workspaces Digital Projects B... Get data

## Digital Activity Board

**Segment**

- (Blank)
- (C) Corporate Center
- (FD) Functional Divisions
- (NC) Nutrition & Care
- (PM) Performance Materials
- (RE) Resource Efficiency
- (TI) Technology & Infrastructure
- (REG) Regions

**Status**

- 1. Ideation
- 2. Evaluation
- 3. Piloting
- 4. Scaling
- 5. Operating / Completed
- 6. Discontinuing / Cancelled

**53**  
Total Activities

**(Blank)**  
Activities started YTD

Tag	Percentage
#DigitalBusiness	42.11%
#SmartOperations	29.82%
#CognitiveSolutions	21.05%
#HumanWork	7.02%

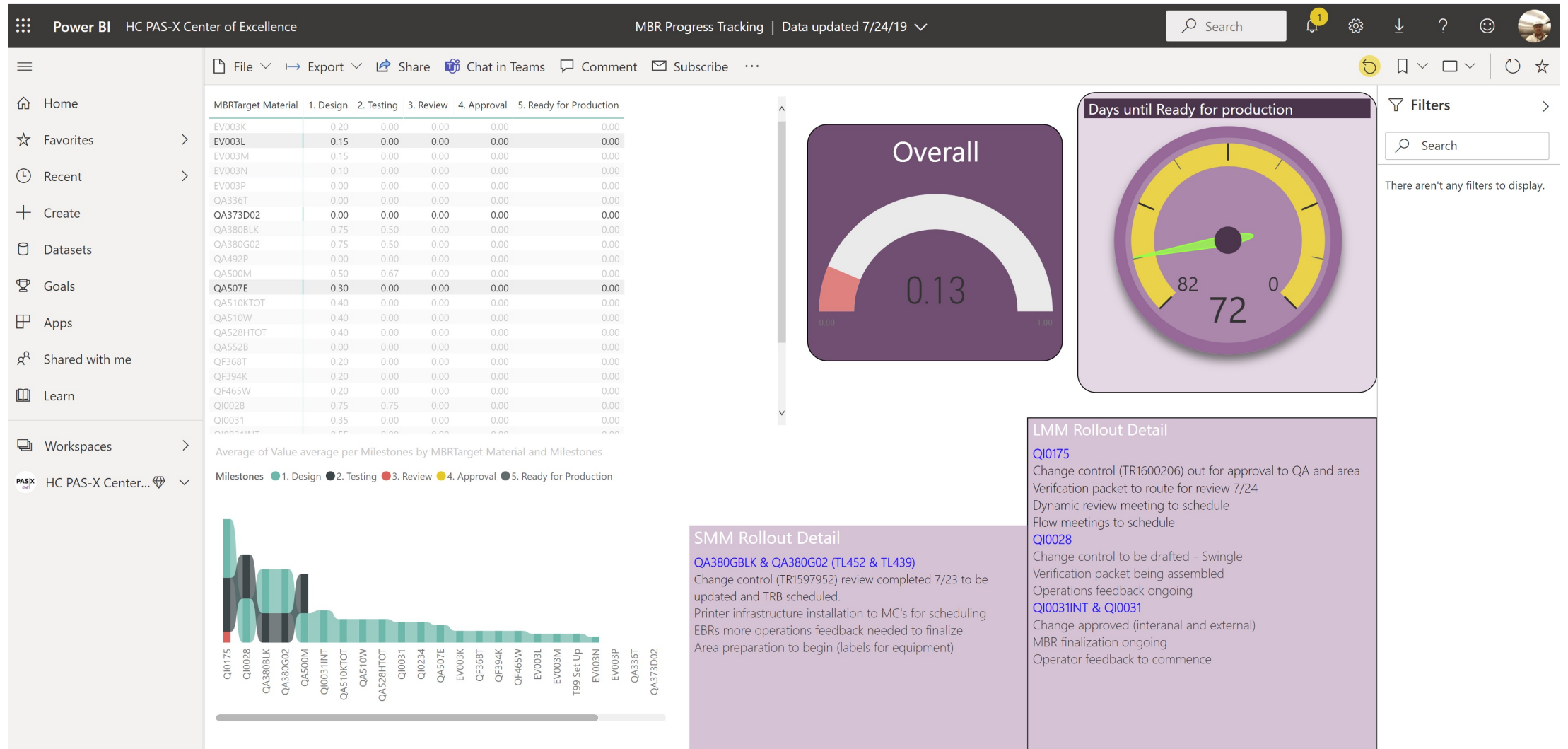
Title	Contact	Org.-Unit	Start Date	Partner
Remote condition monitoring: detect anomalies in acrolein incineration, Mobile	Stommel, Yves Gorat	NC-AN	2018, January	
Remote Operation for RE-AO-MOB	Hamann, Ingo	RE-AO; RE-PT	2019, January	
ROBIN	Stoehr, Torsten	RE-OA; RE-SG	2018, June	Citrine Informatics
Robotics @ NC	Hueckstaedt, Jonas	NC-FAP; NC-CO	2019, January	
Sampling process	Stegemann, Peter	NC-CS; NC-OI; NC-OU; RE-CAD	2019, April	Microsoft
Soft sensors: Superabsorber quality	Lukic, Milica	NC-SU	2019, January	
SPRING – Microsoft Dynamics CRM 365	Menke, Femia	NC-OI; PM-PI; RE-CAD	2018, January	Microsoft
Tool for Webinars	Ide, Jonas	NC-HC	2019, January	
Value based pricing App	Paul, Thomas;Greb, Horst	FD-MSE	2018, January	
Visitor App	Booge, Yvonne	NC-HC	2019, January	

**Value Chain Area**

**Additional Tags**

# Power BI Use Case #3 – Visual Management Dashboard

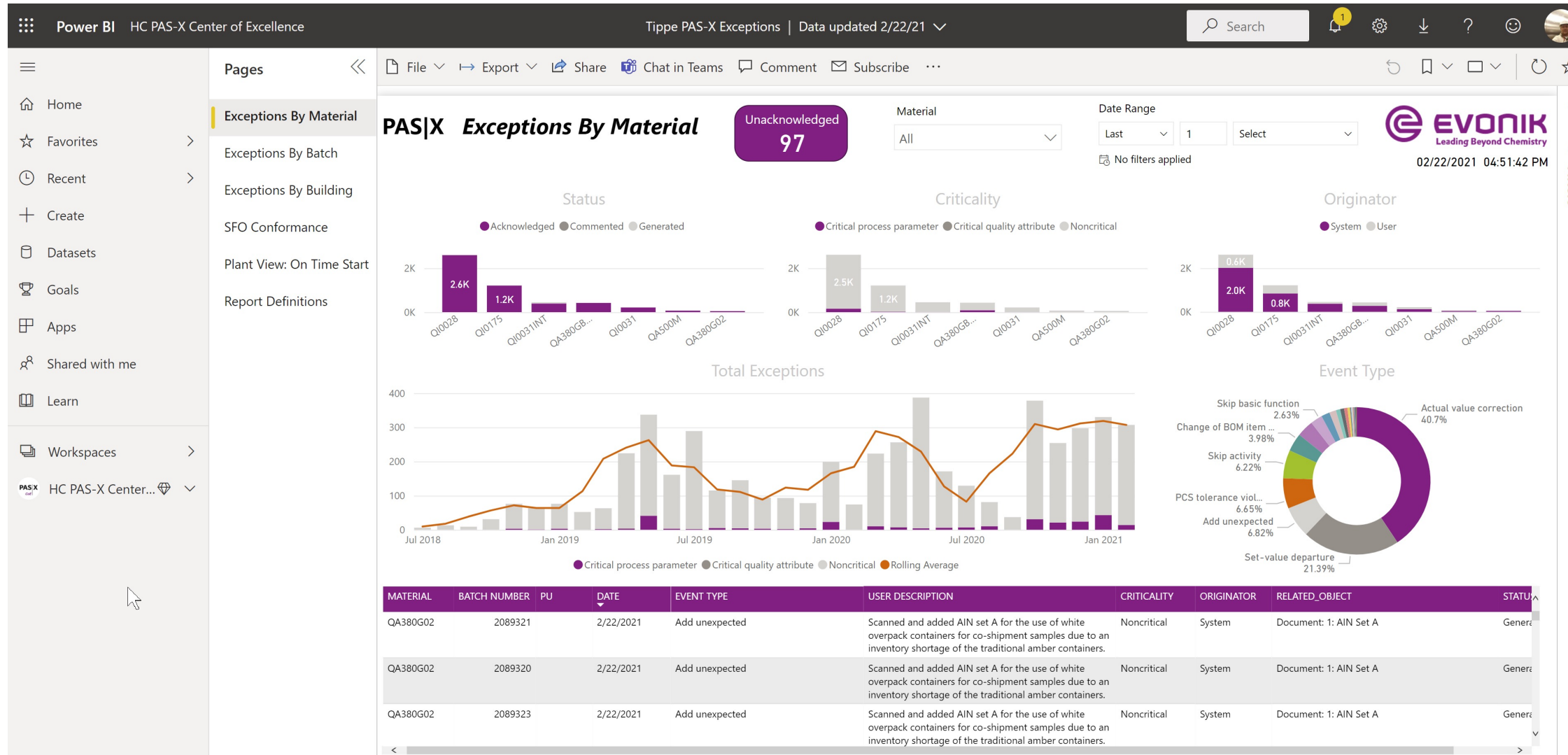
## HC PAS-X Center of Excellence; MBR Progress Tracking Report





# Power BI Use Case #3 – Visual Management Dashboard

## HC PAS-X Center of Excellence; Tippe Exceptions Report



# New Users: Getting Started

- **Step 1:** If you do not already have Power BI on your computer, Download the free Power BI Desktop app. (Note: Explain service option)
- **Step 2:** Watch Introduction Video: <https://youtu.be/m1eLTtZHG4>  
Length about 51 min.
- **Step 3:** Recreate example described in the video on your desktop, key points are detailed on next slide:

# Create Power BI Data Model Using GDP Data from Web

- **Start Power BI:** Click on Power BI to open program
- **Get Data:** Download GDP data from website: <https://www.imf.org/en/Publications/WEO/weo-database/2020/April/select-country-group> (Note: refer to video at 11:30 to 13:30 for explanation on how to find and download data) (Select report based on Gross Domestic Product, Current Prices – Purchasing Power Parity International Dollars)
- **Clean Data:** (Refer to video 13:30 to 21:00)
  - Make new header
  - Delete unnecessary columns
  - Convert data columns into rows
  - Filter out invalid data
  - Change Column Formats
- **Data Visualization:** (Refer to video 21:00 to 27:15)
  - Load data into data model
  - Change country column category
  - Select GDP as value field
  - Select year and country as axis fields
  - Learn how to use filters
  - Learn how to display and change visualization charts

# Demonstrate Power BI – Recreate GDP Example

- **Power BI – Part 1: How to get and clean data**

<https://youtu.be/IJQ27ZhkA00>



- **Power BI – Part 2: How to create visualizations from the data model**

[https://youtu.be/1h1\\_IUOAmJM](https://youtu.be/1h1_IUOAmJM)

# “Our” Power BI User Group

- Show Live Demo of the Community Web Pages
- Become a Community Member then a Group Member
  - Microsoft Power BI Community
    - [https://community.powerbi.com/t5/Power-BI-User-Groups/ct-p/pbi\\_usergroups](https://community.powerbi.com/t5/Power-BI-User-Groups/ct-p/pbi_usergroups)
  - Central Indiana Power Platform User Group
    - [https://community.powerbi.com/t5/Central-Indiana-Power-Platform/gh-p/pbi\\_centralIndiana\\_usergroup](https://community.powerbi.com/t5/Central-Indiana-Power-Platform/gh-p/pbi_centralIndiana_usergroup)
- Show how to get access to Google shared files
  - Sign up for the central Indiana user group
  - Share your e-mail

# Open Discussion and Next Steps

- Comments from participants and discuss tweaks based on feedback
- Discuss frequency and duration of meetings
- Next Steps

**POWER BI USER GROUP  
SESSION 1  
THE END**

