

February 3, 2009

To: Members of the Board of Trustees

Fr: James S. Almond
Interim Executive Vice President
for Business and Finance and Treasurer

Re: West Lafayette Campus Master Plan

The West Lafayette Campus Master Plan will be presented at the Physical Facilities Committee meeting on February 12, 2009. The master plan is the product of numerous meetings and feedback sessions for faculty, staff, students and the community over many months that provide the framework for future growth and development of the Campus.

I will provide some brief comments and introduce Riccardo Dumont of Sasaki and Associates to present the West Lafayette Campus Master Plan. Attached is a copy of the presentation for your review. The more detailed Campus Master Plan is available for your reference if you would like to review a copy.

With your endorsement and approval of the West Lafayette Plan at the Board of Trustees Stated Meeting, all four campuses will have approved plans.

Please call me at 765-494-9705 if you have any questions or need additional information.

cc: President France A. Córdoba
Legal Counsel Anthony S. Benton
Secretary Roseanna M. Behringer
Vice President Robert E. McMains
Director John D. Collier
Interim Vice President John R. Shipley



CROSSING STATE

WEST LAFAYETTE CAMPUS MASTER PLAN

NEW SYNERGIES' THEMES & SASAKI'S ANALYSIS

STRATEGIC PLAN INITIATIVES

MASTER PLAN IMPLEMENTATION

FACILITATING COLLABORATION

- › State Street as a unifying feature
- › Creating a “corridor for collaboration” including appropriate facilities
- › Minimization of sprawl by concentrating campus activities to create a vibrant community

CREATING A LIVING LABORATORY

- › Use of the campus physical environment for research, habitat and recreation purposes

SUSTAINABILITY

- › Engagement of the environment
- › Encouraging environmental stewardship
- › Quality of life considerations including enhancement of trail system

FOSTERING COMMUNITY

- › Collaboration of Purdue / West Lafayette communities
- › Demystification of road systems

STUDENT & FACULTY RECRUITMENT, SUCCESS, AND RETENTION

- › Enhancement of Purdue's sense of place
- › Facilities and environment critical to creating positive first impression

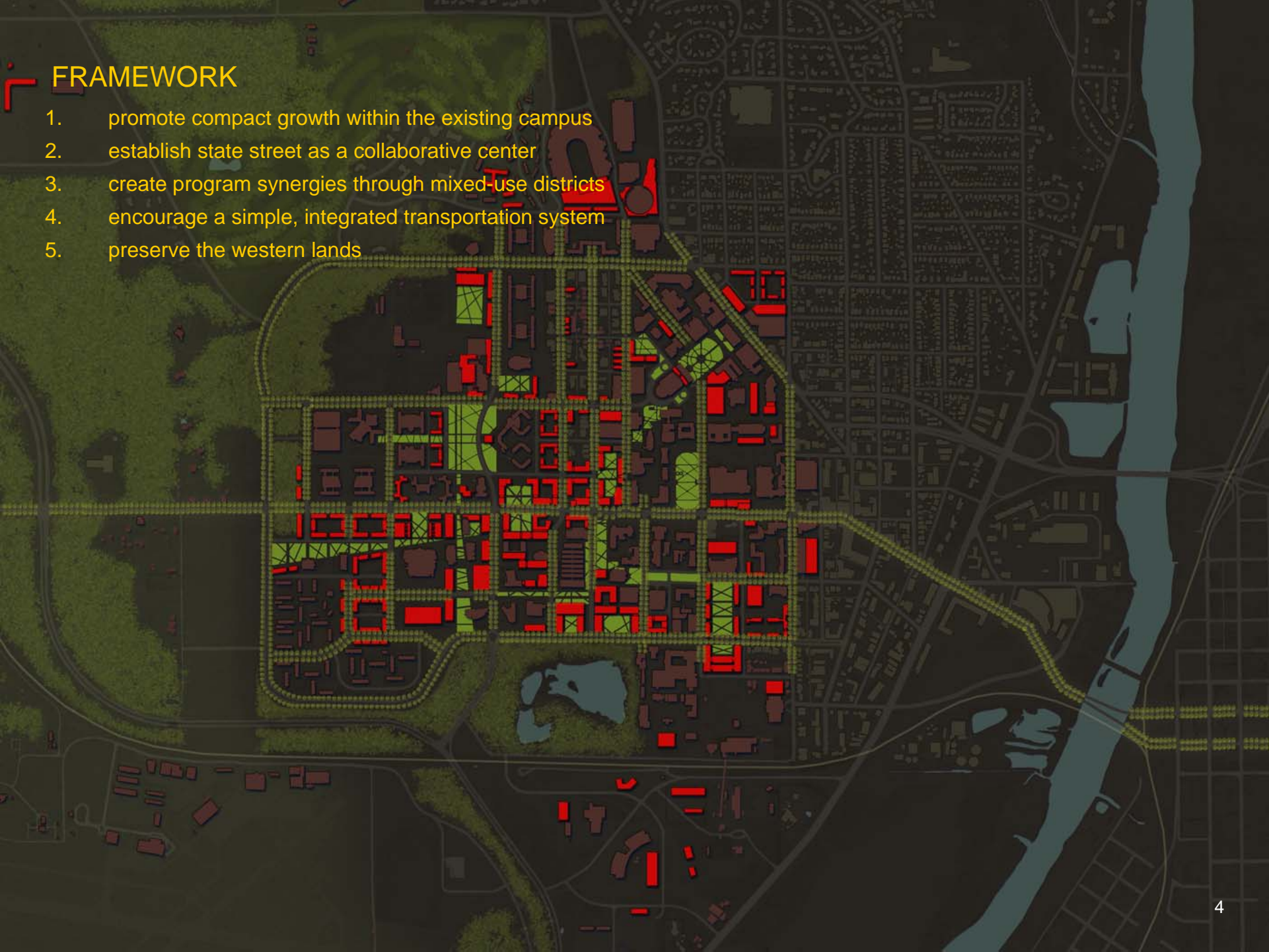


OVERARCHING PRINCIPLES

WEST LAFAYETTE CAMPUS MASTER PLAN

FRAMEWORK

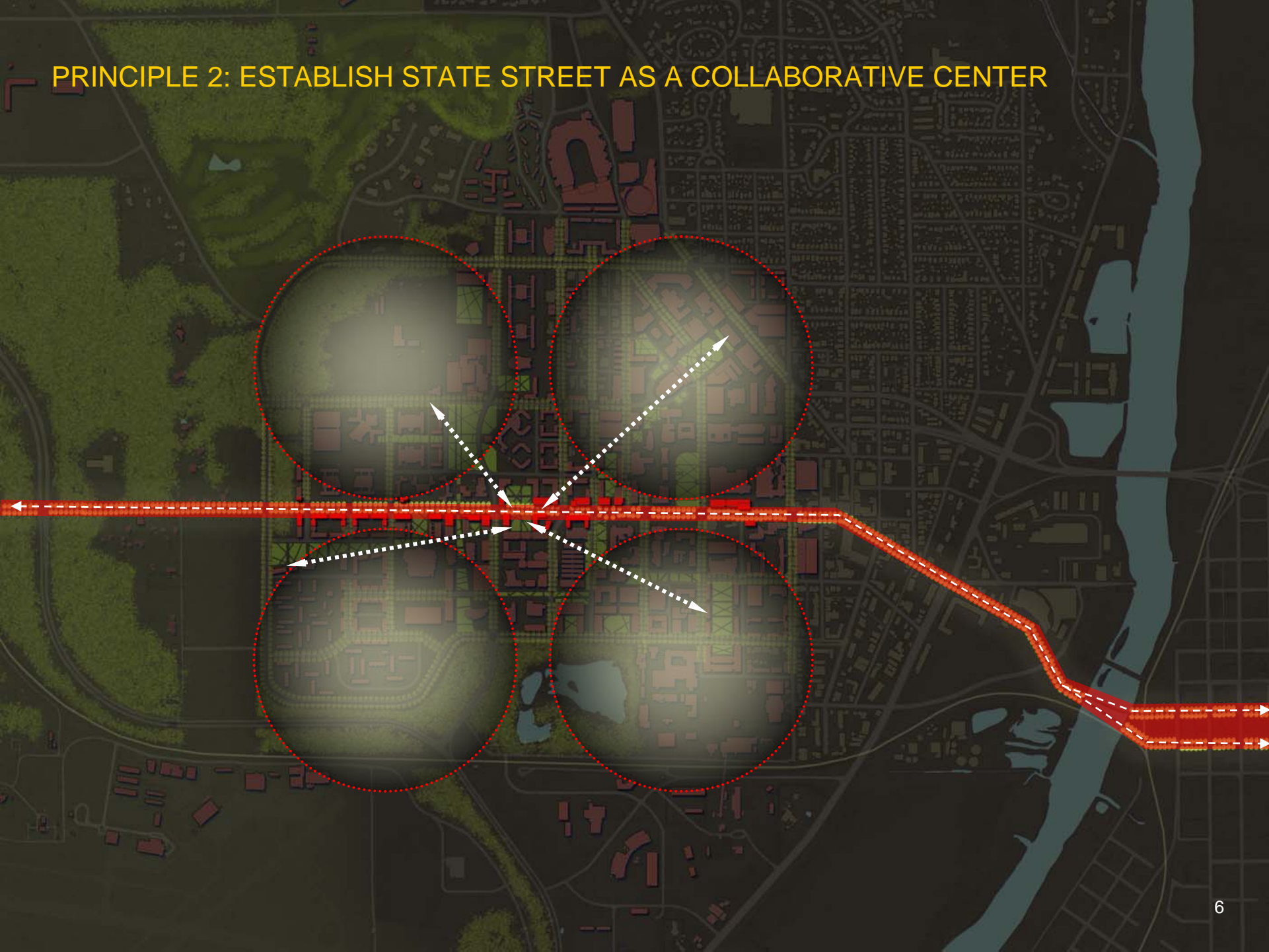
1. promote compact growth within the existing campus
2. establish state street as a collaborative center
3. create program synergies through mixed-use districts
4. encourage a simple, integrated transportation system
5. preserve the western lands



PRINCIPLE 1: PROMOTE COMPACT GROWTH WITHIN THE EXISTING CAMPUS

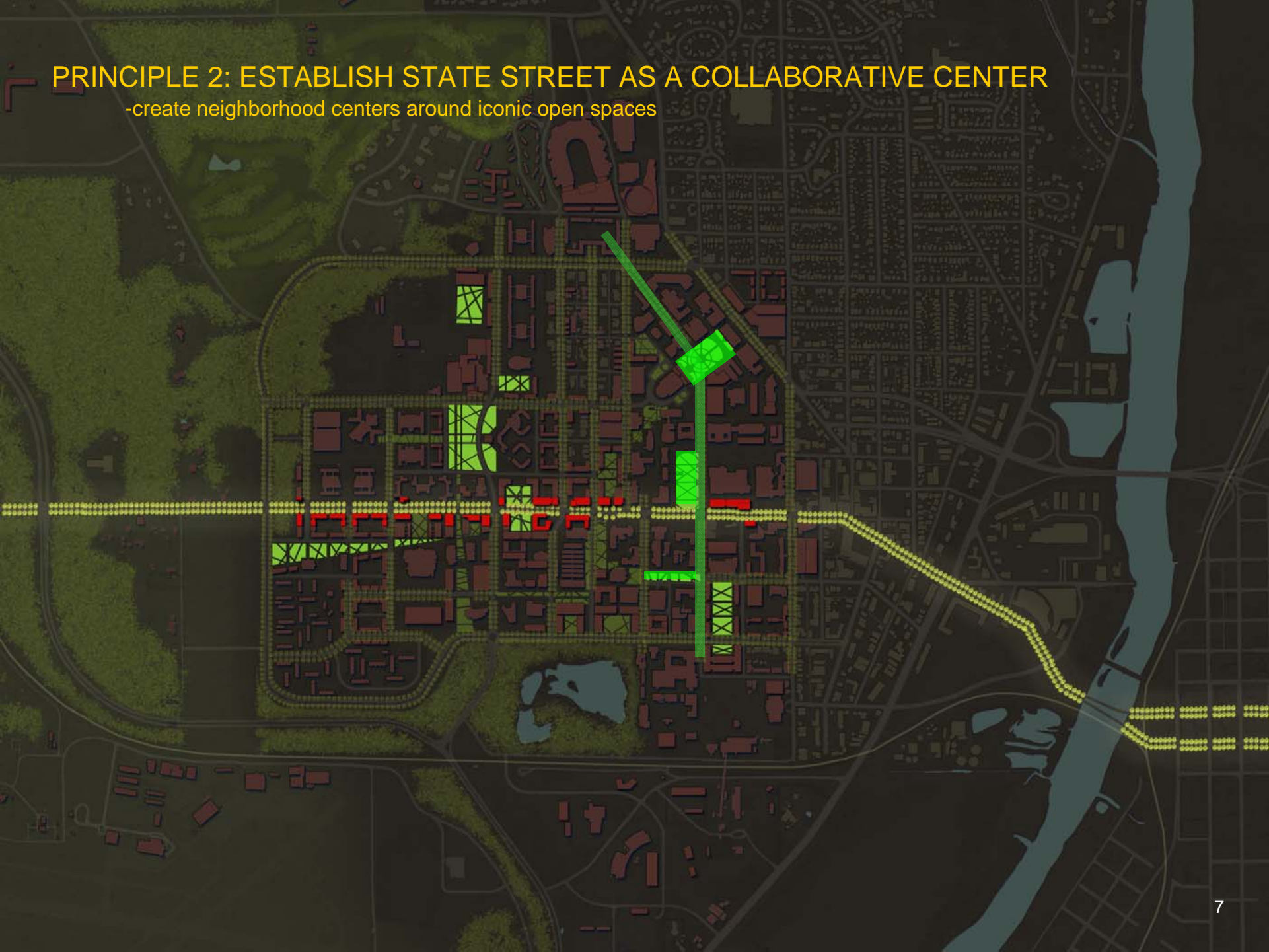


PRINCIPLE 2: ESTABLISH STATE STREET AS A COLLABORATIVE CENTER



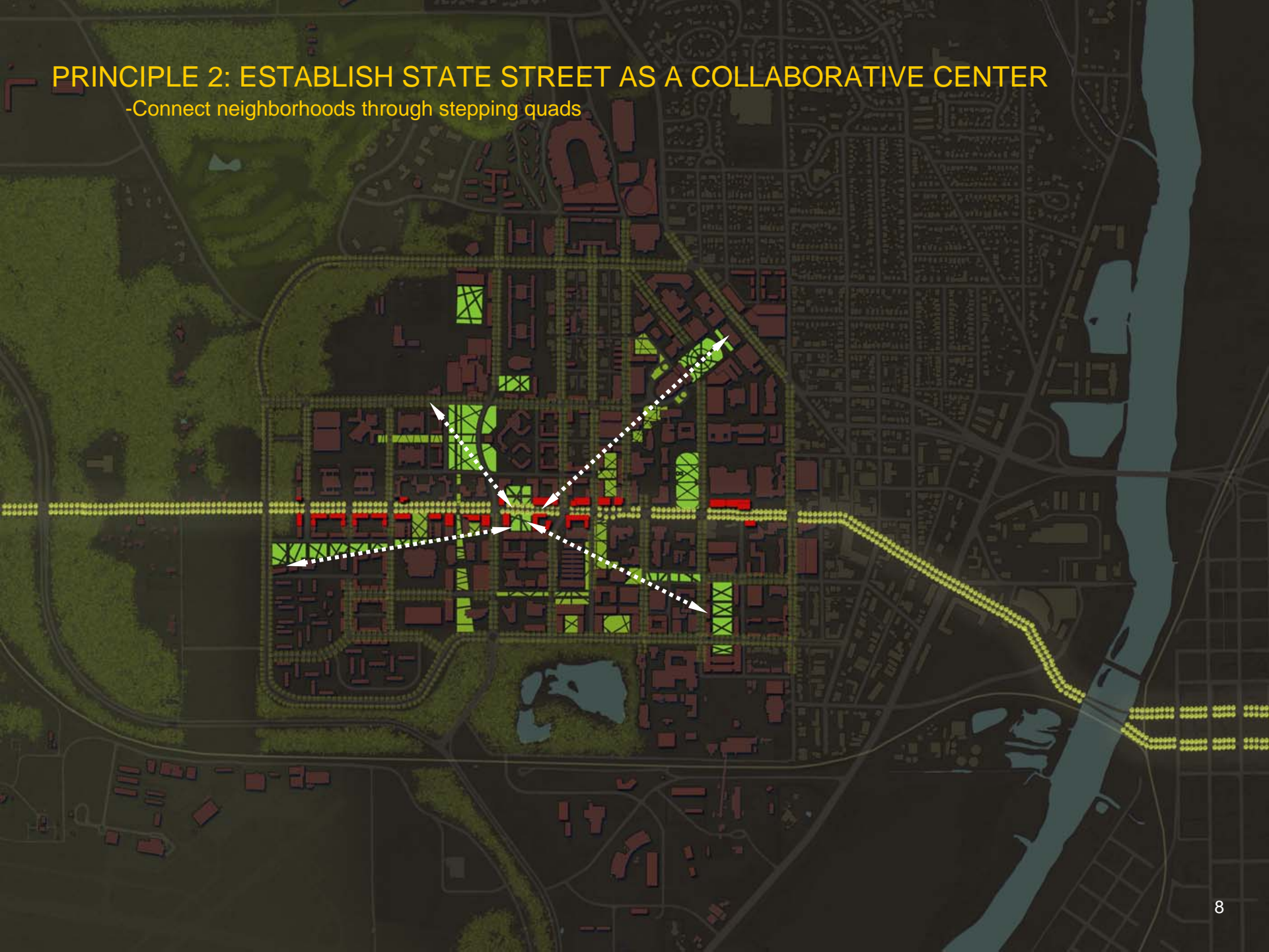
PRINCIPLE 2: ESTABLISH STATE STREET AS A COLLABORATIVE CENTER

-create neighborhood centers around iconic open spaces



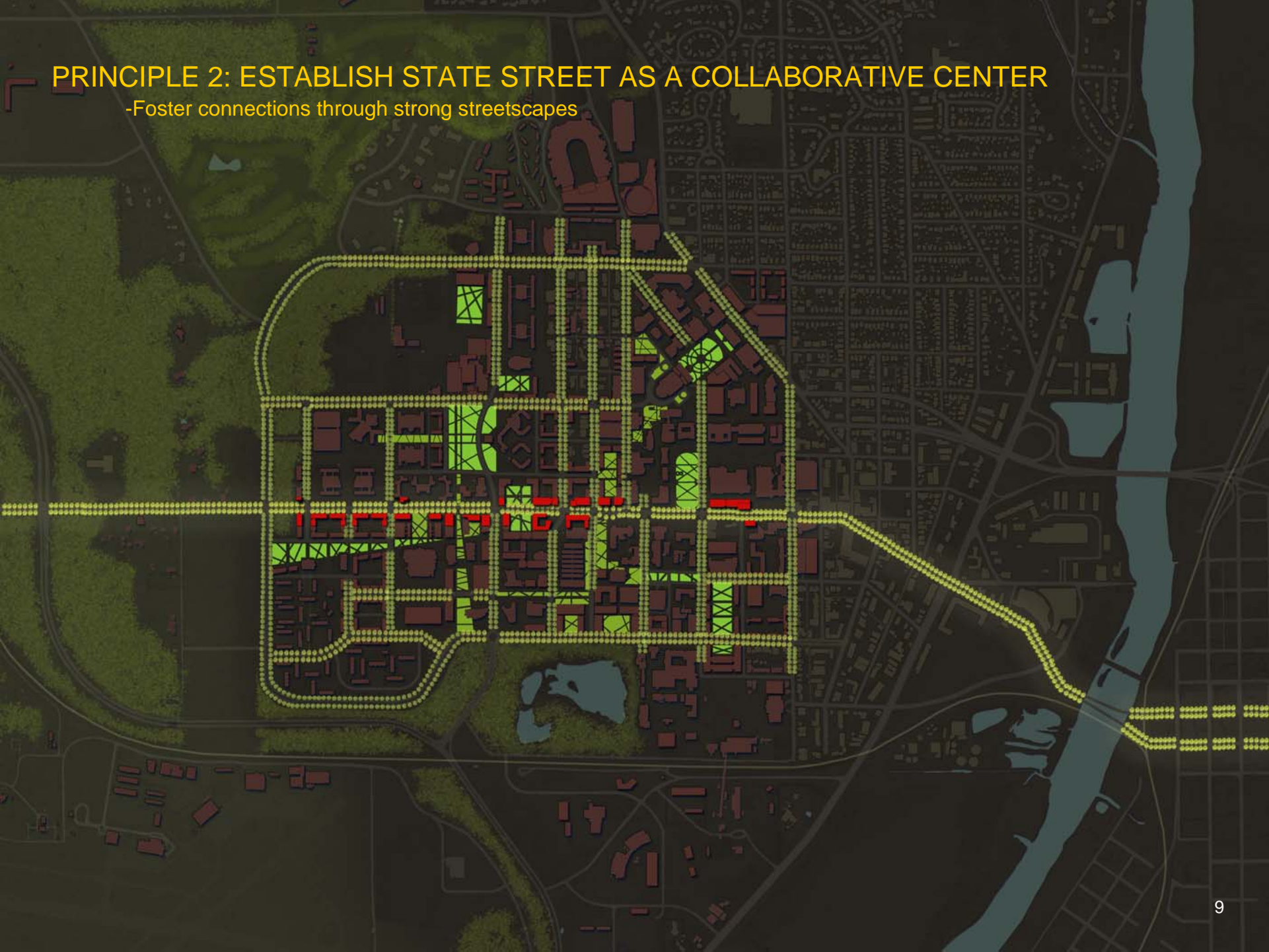
PRINCIPLE 2: ESTABLISH STATE STREET AS A COLLABORATIVE CENTER

-Connect neighborhoods through stepping quads



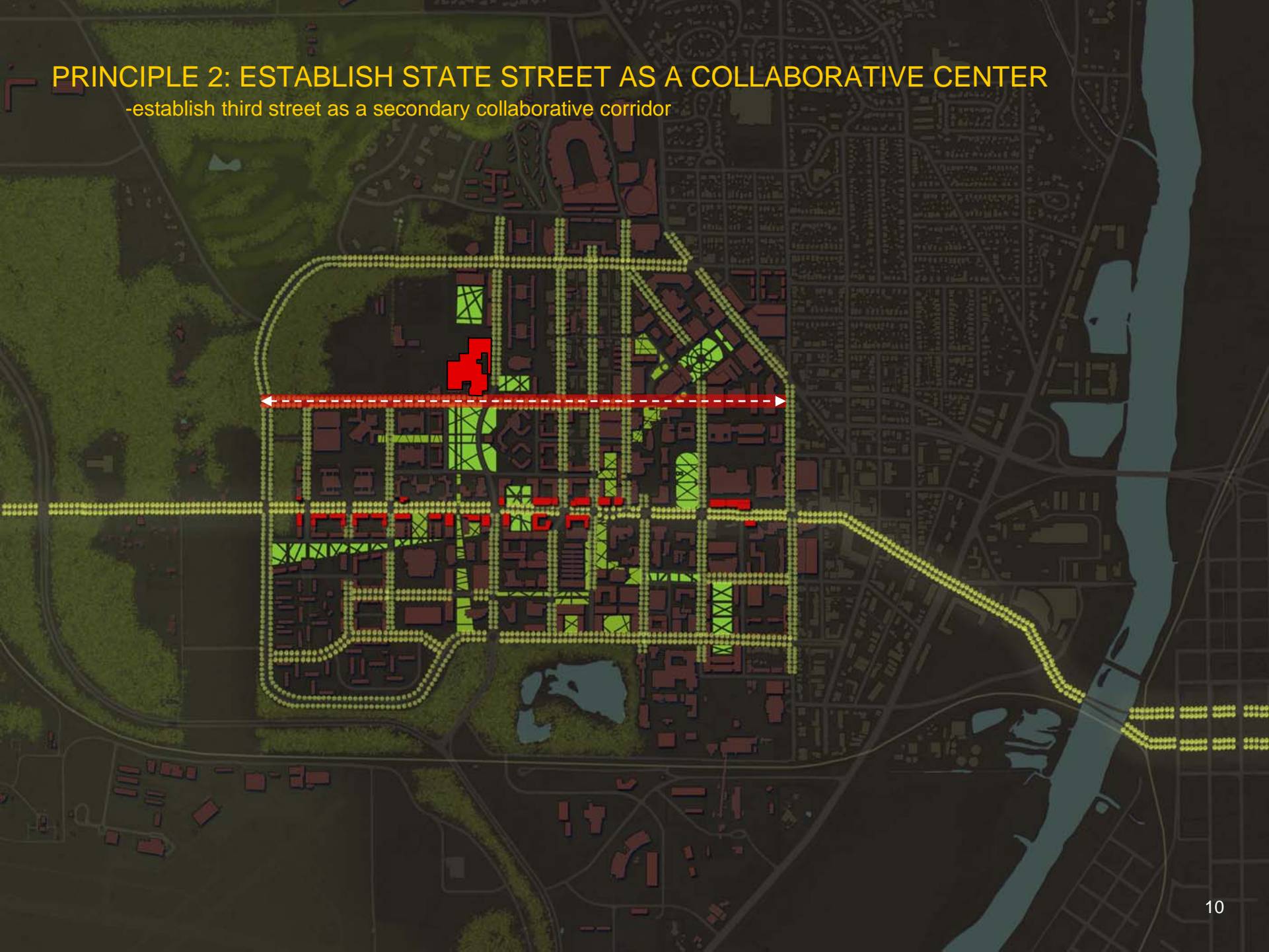
PRINCIPLE 2: ESTABLISH STATE STREET AS A COLLABORATIVE CENTER

-Foster connections through strong streetscapes



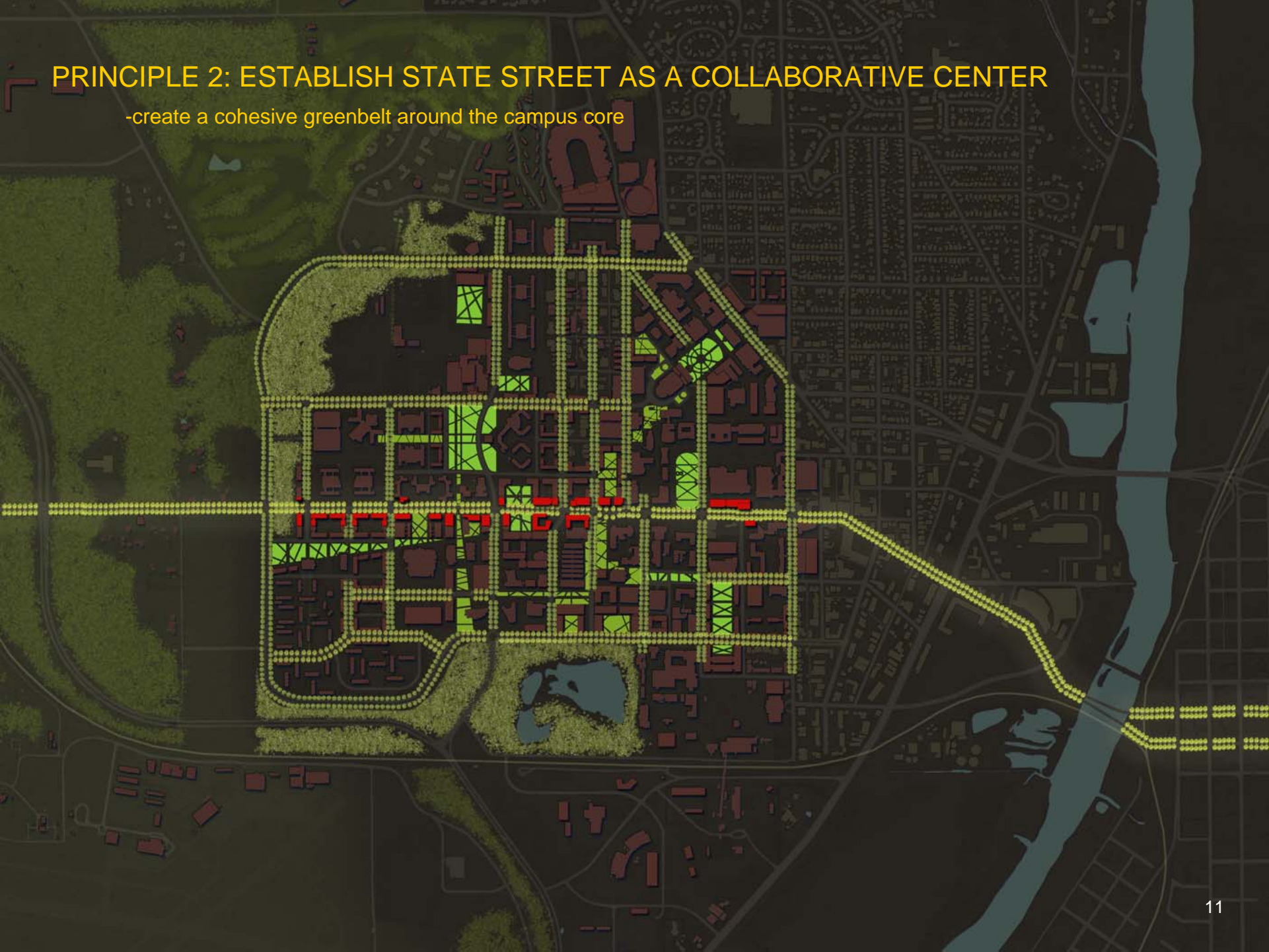
PRINCIPLE 2: ESTABLISH STATE STREET AS A COLLABORATIVE CENTER

-establish third street as a secondary collaborative corridor

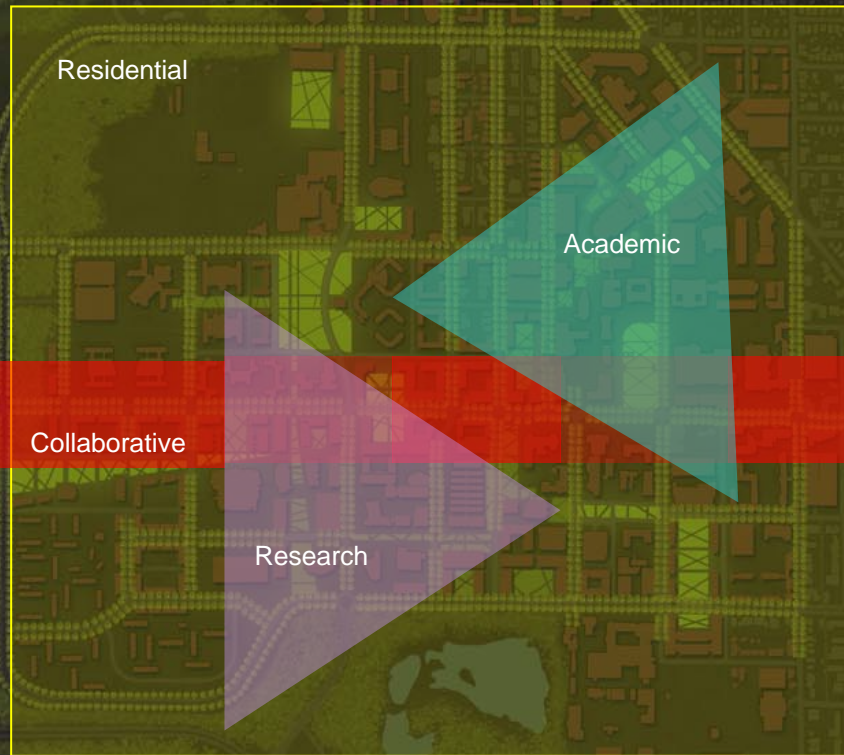


PRINCIPLE 2: ESTABLISH STATE STREET AS A COLLABORATIVE CENTER

-create a cohesive greenbelt around the campus core

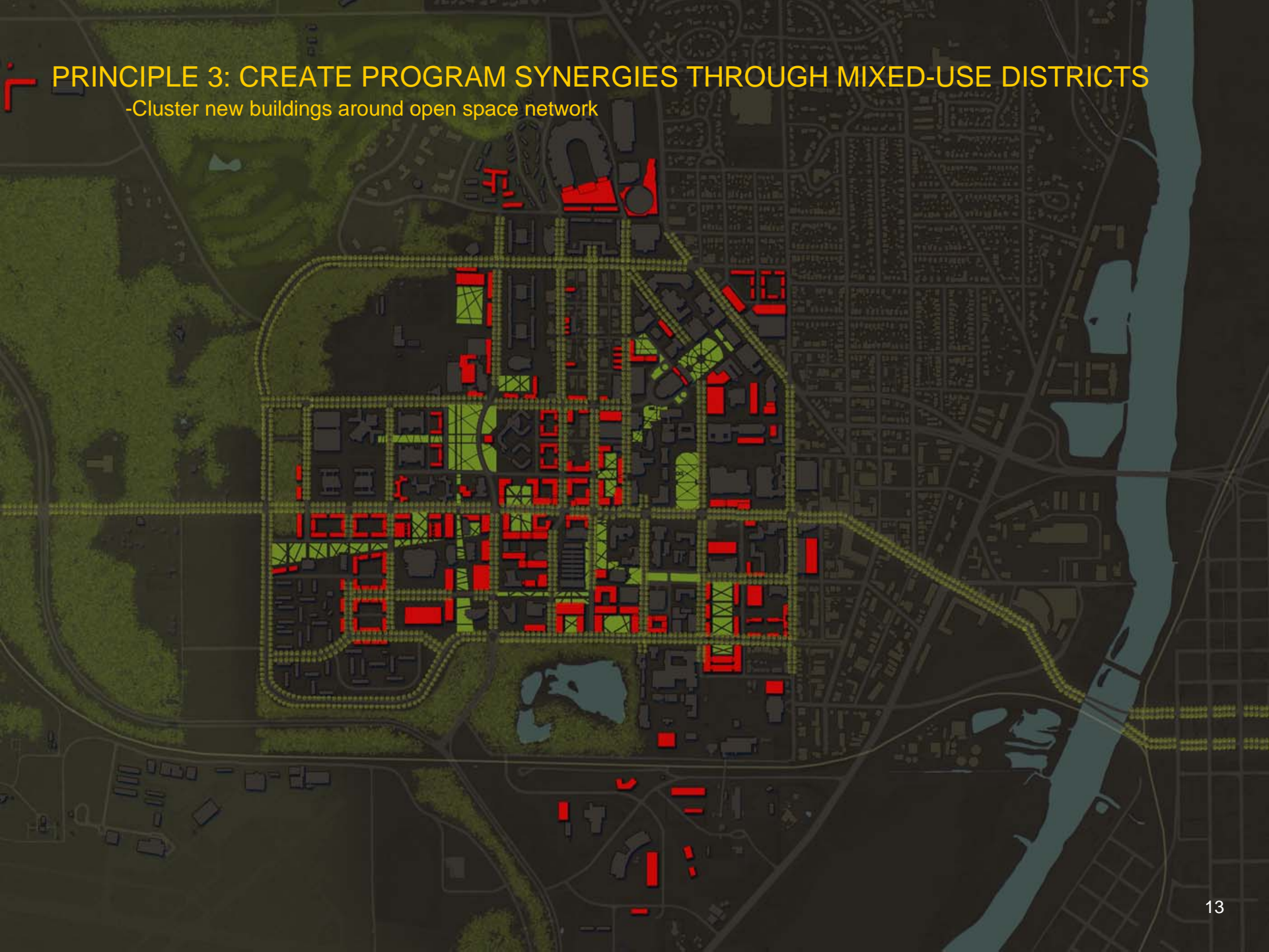


PRINCIPLE 3: CREATE PROGRAM SYNERGIES THROUGH MIXED-USE DISTRICTS



PRINCIPLE 3: CREATE PROGRAM SYNERGIES THROUGH MIXED-USE DISTRICTS

-Cluster new buildings around open space network



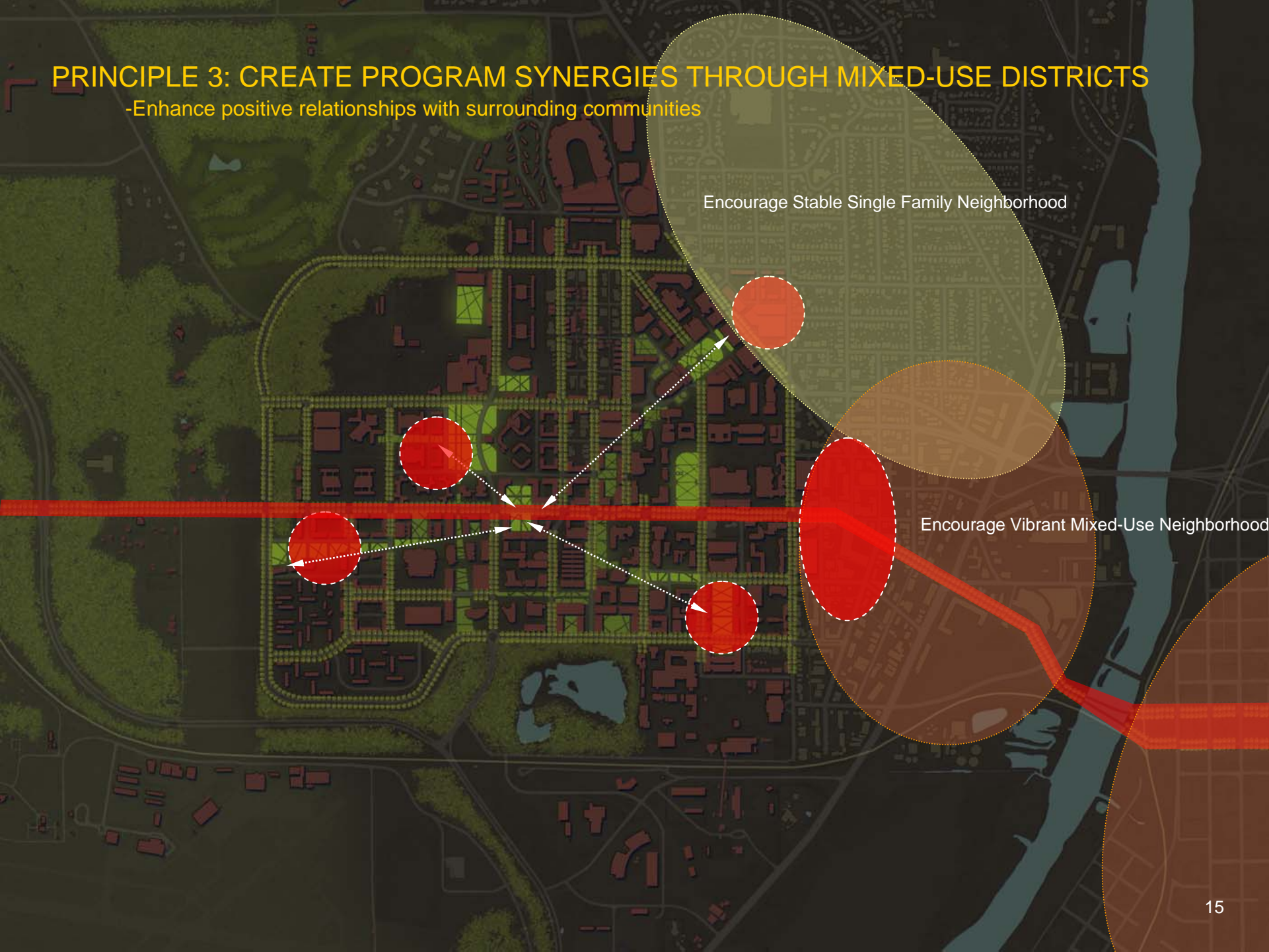
PRINCIPLE 3: CREATE PROGRAM SYNERGIES THROUGH MIXED-USE DISTRICTS

-Establish residential populations in all 4 campus quadrants



PRINCIPLE 3: CREATE PROGRAM SYNERGIES THROUGH MIXED-USE DISTRICTS

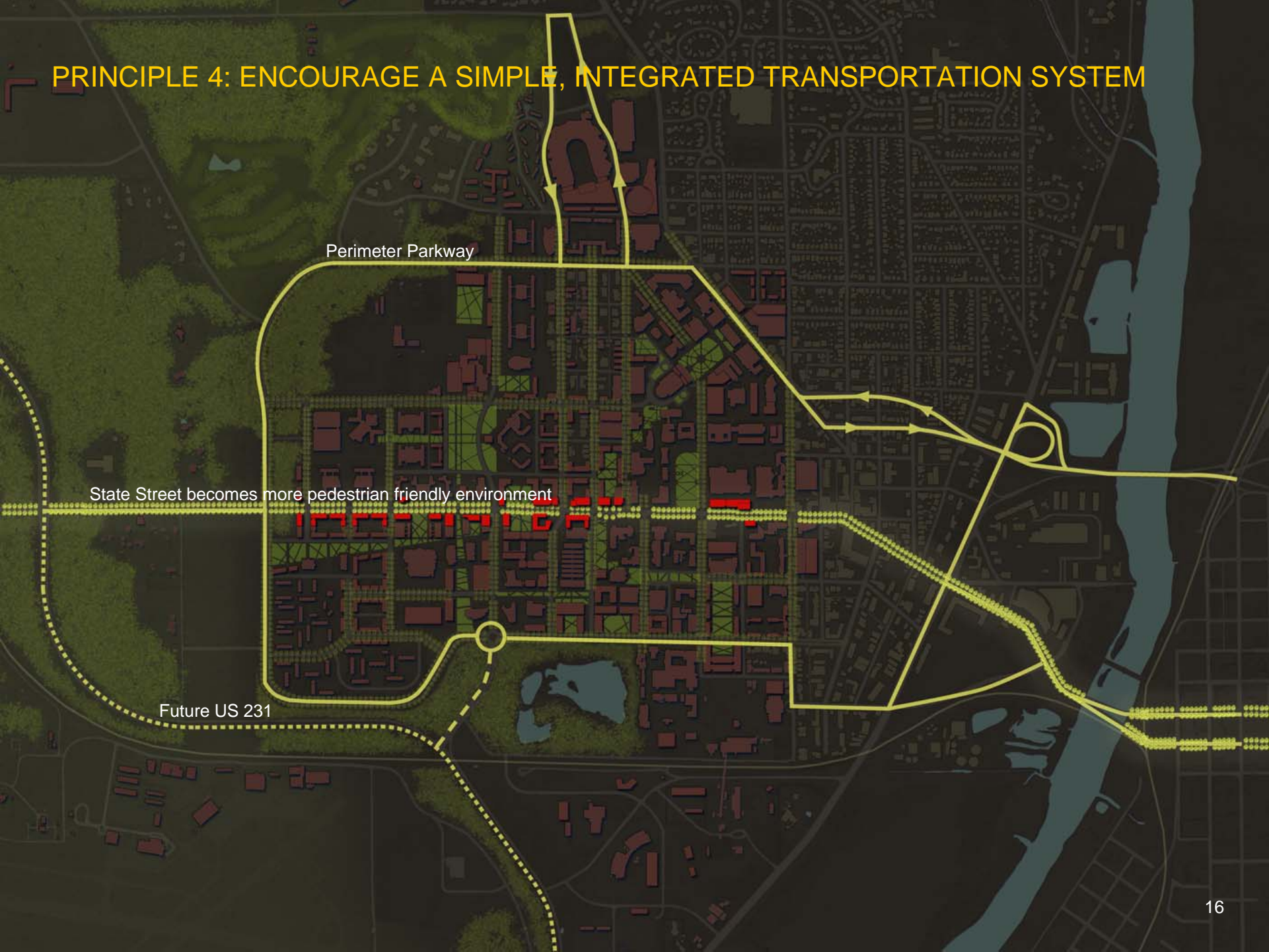
-Enhance positive relationships with surrounding communities



Encourage Stable Single Family Neighborhood

Encourage Vibrant Mixed-Use Neighborhood

PRINCIPLE 4: ENCOURAGE A SIMPLE, INTEGRATED TRANSPORTATION SYSTEM



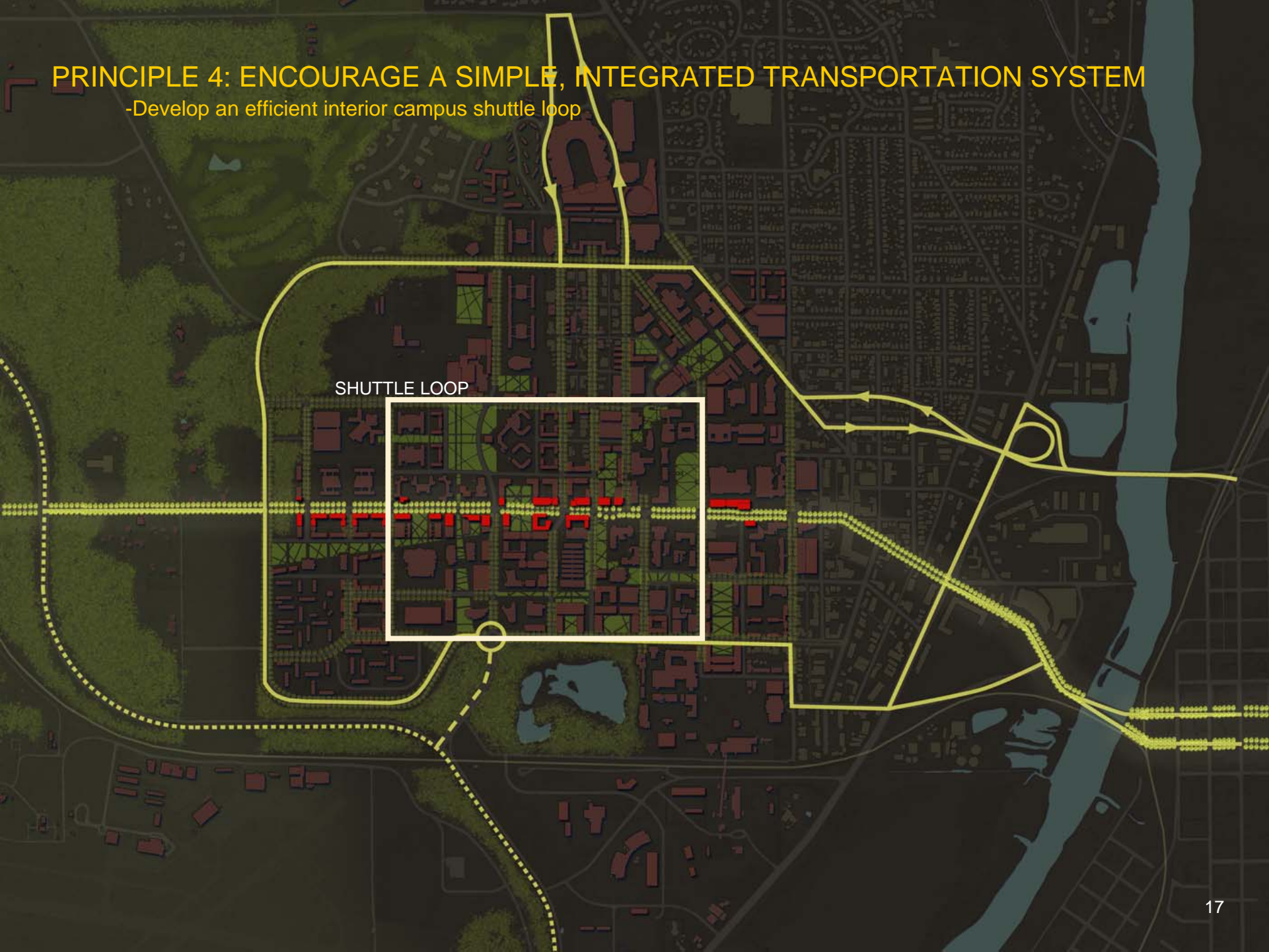
Perimeter Parkway

State Street becomes more pedestrian friendly environment

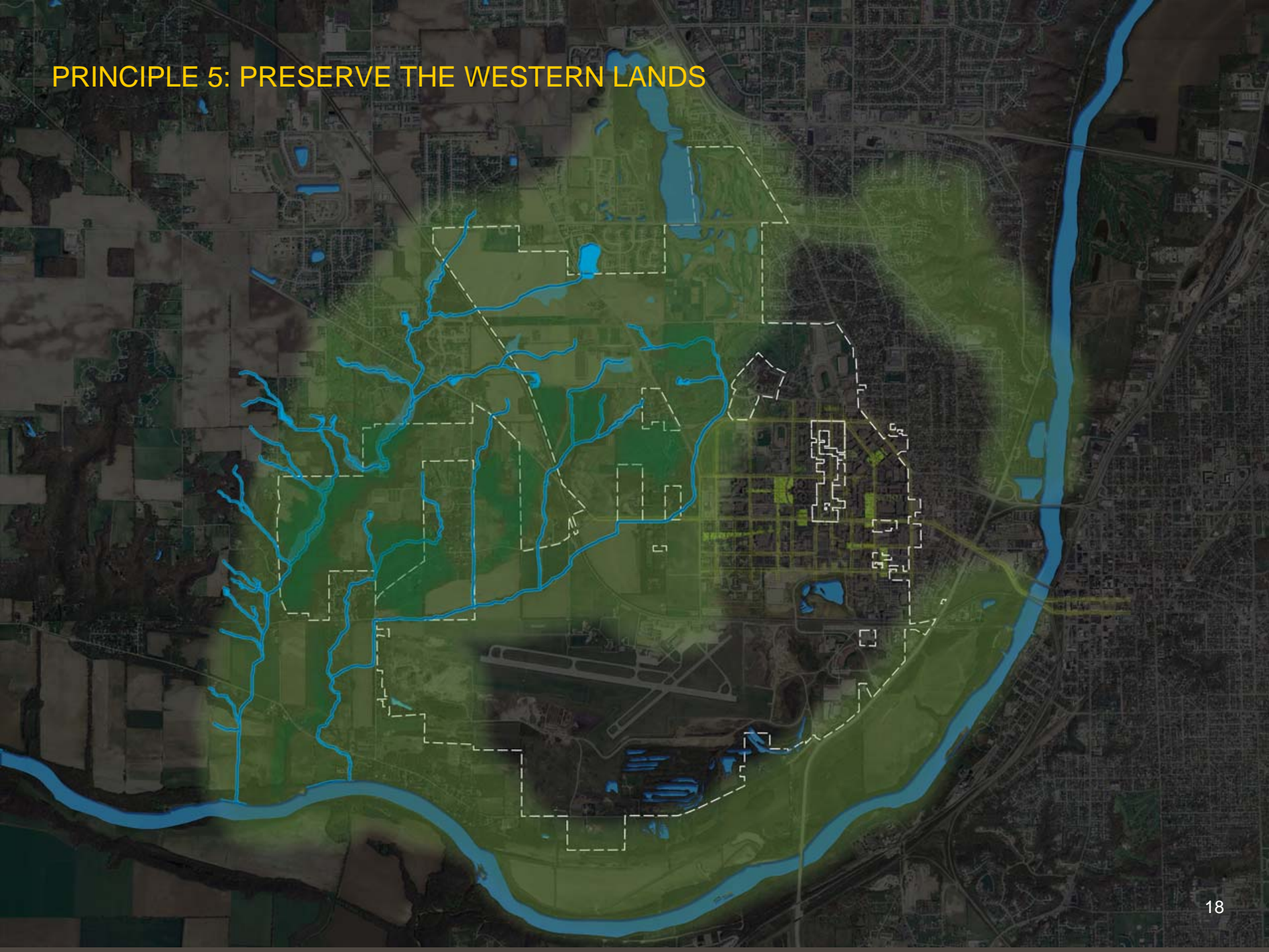
Future US 231

PRINCIPLE 4: ENCOURAGE A SIMPLE, INTEGRATED TRANSPORTATION SYSTEM

-Develop an efficient interior campus shuttle loop



PRINCIPLE 5: PRESERVE THE WESTERN LANDS



PRINCIPLE 5: PRESERVE THE WESTERN LANDS

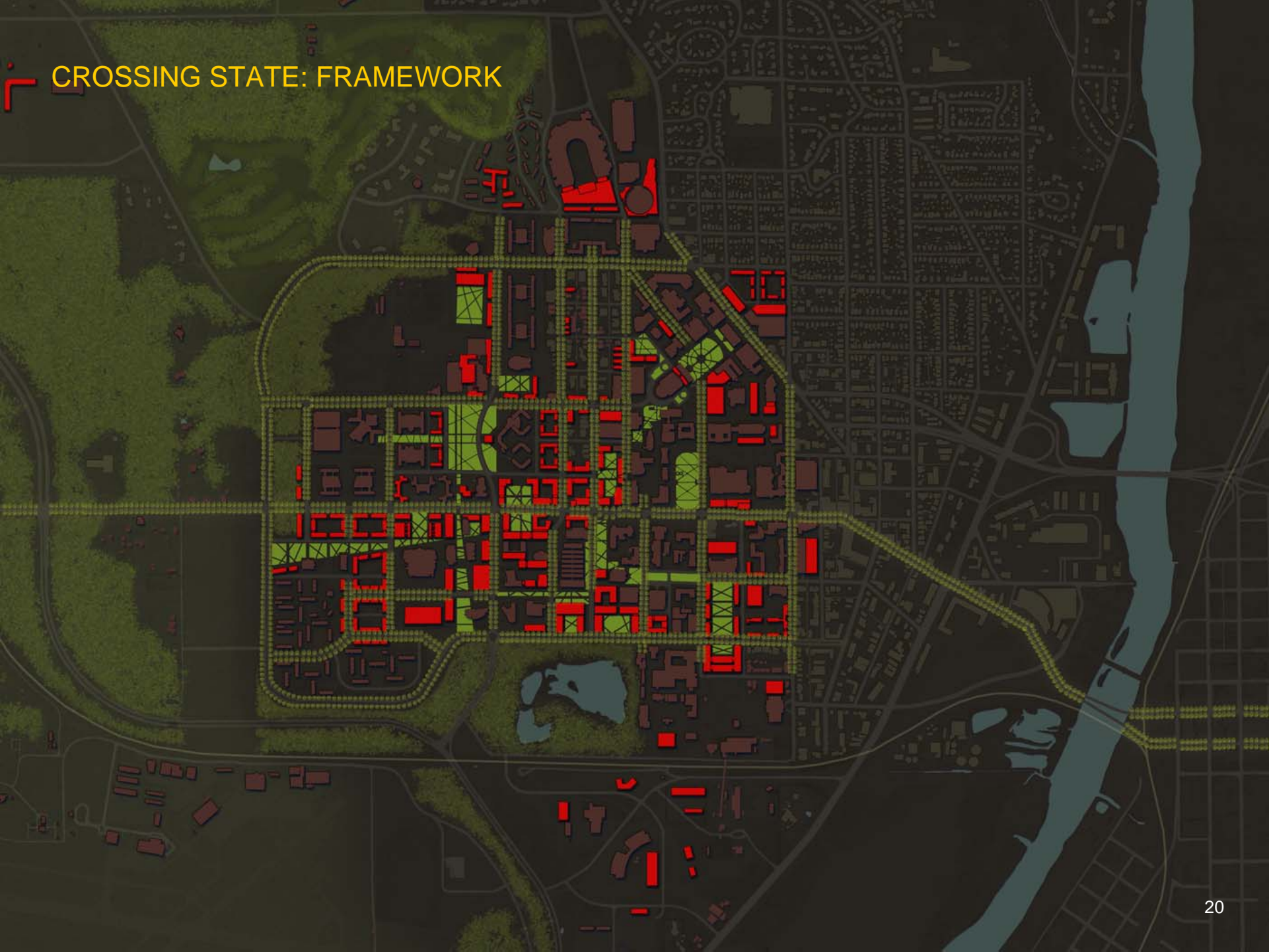
-Develop links through regional and on-camps trails



Existing

Proposed

CROSSING STATE: FRAMEWORK





DISTRICT STUDIES

WEST LAFAYETTE CAMPUS MASTER PLAN

CROSSING STATE



© Anderson Illustration Associates, Inc. 2008

NORTHEAST CAMPUS CORE

Collaborative Learning with Transparent Facades along State Street



Active Third Street Corridors



Restored Memorial Mall



New Academic Quads



SOUTHEAST CAMPUS CORE



Research District Unified with Academic Core

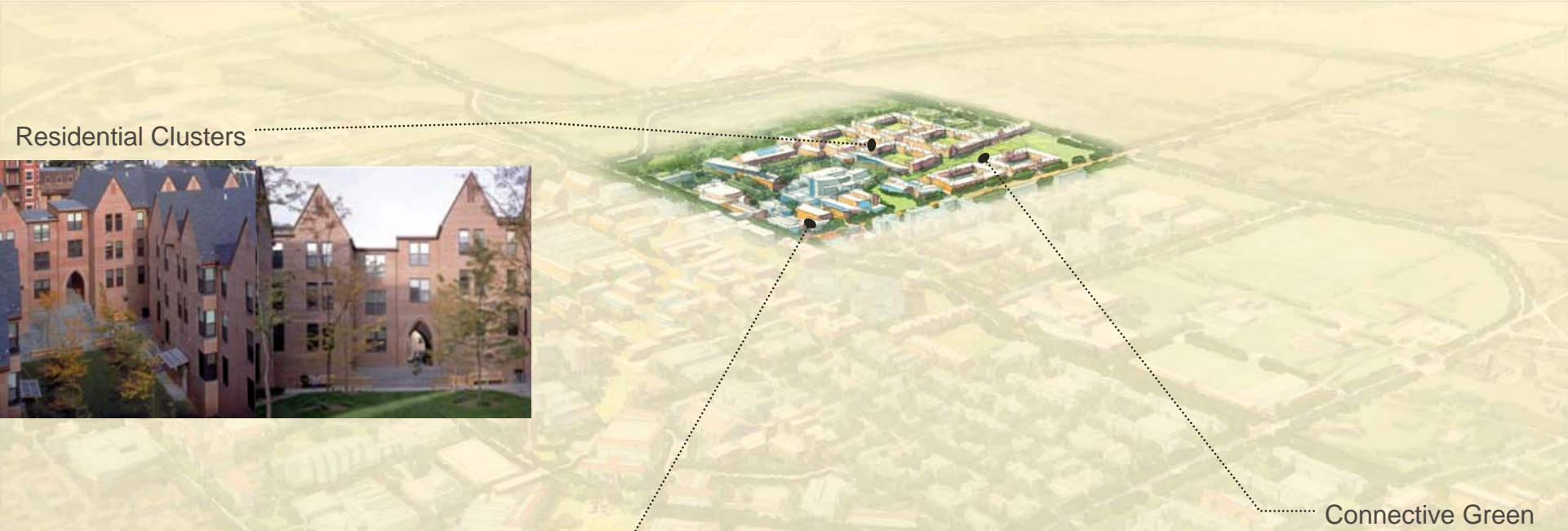


Passive Recreation at Quadrangle and Quarry Reserve

Residential Learning Communities



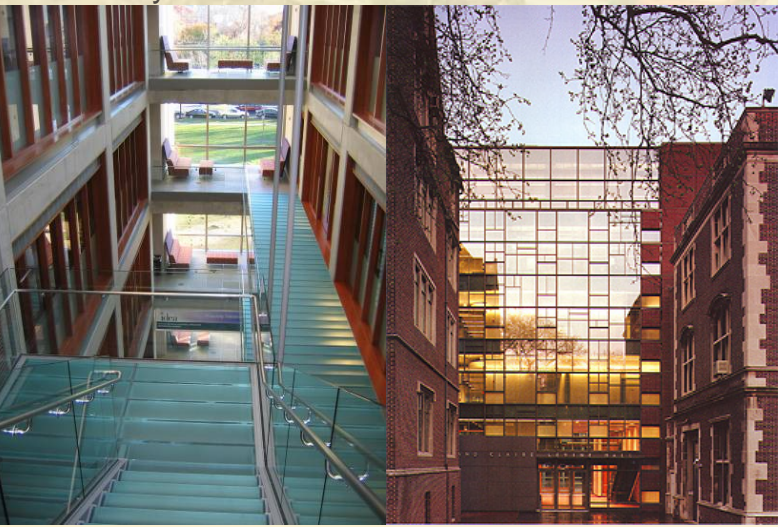
SOUTHWEST CAMPUS CORE



Residential Clusters



Discovery Park



Connective Green



NORTHWEST CAMPUS CORE



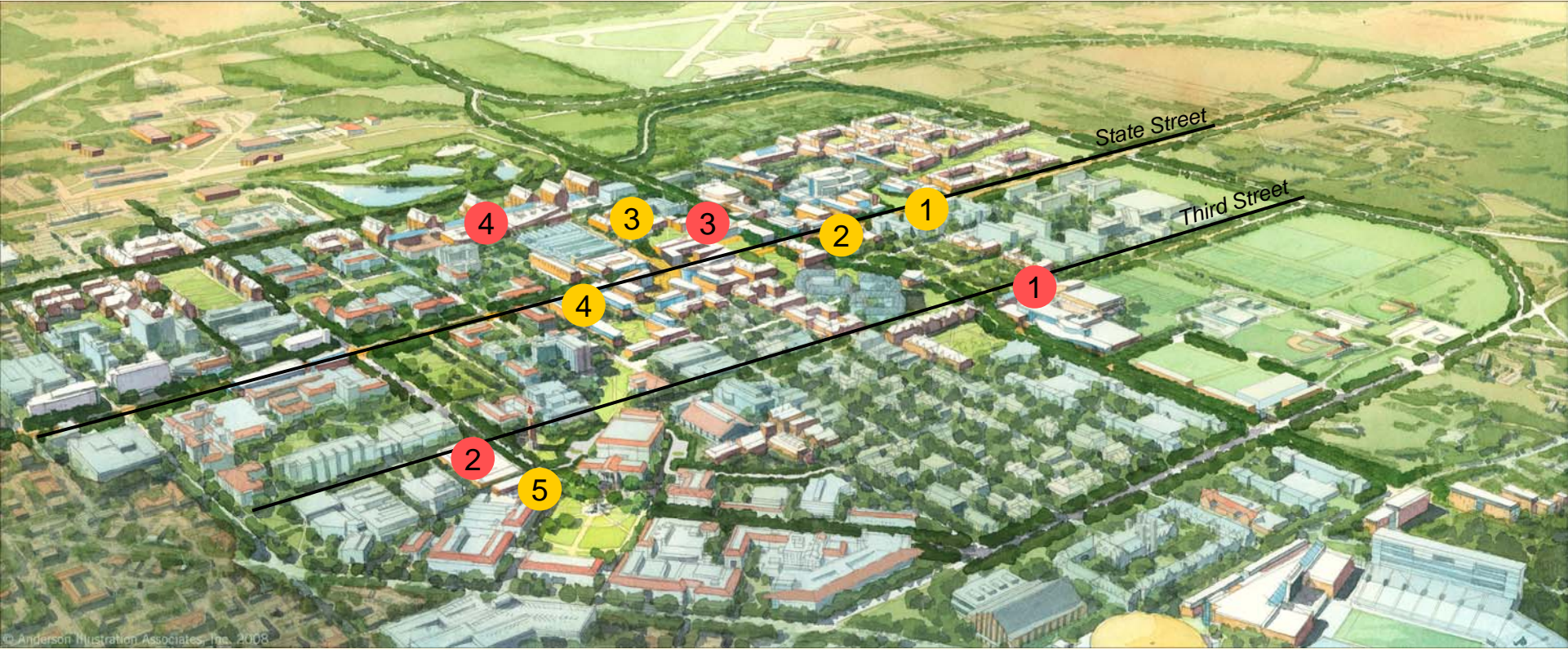
Intimate and Connected Residences

Iconic Open Space



Recreation Addition with Transparent Facade

CROSSING STATE



In Planning or Under Construction

- 1. First Street Towers
- 2. Hanley Hall (CDFS)
- 3. Wang Hall (ECE)
- 4. Marriott Hall (HTM)
- 5. Gatewood Addition (ME)

10-Year Capital Request

- 1. Student Fitness & Wellness Center (RSC)
- 2. Classroom Library
- 3. Herrick Labs
- 4. Life Sciences Facilities
- 5. Large Animal Hospital (yet to be sited)

CROSSING STATE



Master Plan Connections to *New Synergies*
Facilitating Collaboration
Creating a Living Laboratory
Sustainability
Fostering Community
Student and Faculty Recruitment, Success,
and Retention