

MISSION STATEMENT

Purdue Promise is a four-year experience offering financial assistance and targeted support for low-income Indiana residents. The program is rooted in four guiding principles of student achievement – academic development, leadership development, social development, and life skills development – to assist students in strengthening their self-efficacy, self-advocacy, help-seeking skills, and grit. The program minimizes barriers to success and provides individualized care and coaching to retain and graduate scholars prepared for navigating life after college.

VISION STATEMENT

Purdue Promise aspires to graduate scholars on time and debt-free; exceed success rates¹ of the Purdue undergraduate population and the statewide 21st Century Scholars population; and exceed success rates for the historically at-risk demographic subpopulations² scholars represent; as well as be a nationally recognized model for supporting those students.

PROGRAM ELEMENTS (See attached infographic.)

Purdue Promise is both a scholarship and a support program. The “Once Purdue Promise, Always Purdue Promise” policy commits that students will receive support through graduation.

- **Scholarship:** Purdue Promise functions as a gap scholarship, covering remaining financial need after the Division of Financial Aid applies all other eligible aid to students’ accounts. The 21st Century Scholars award covers tuition and regularly assessed fees, whereas Purdue Promise applies to other elements of the cost of attendance: room/board, books, transportation, and miscellaneous expenses. Scholarships are both donor-funded and Purdue-funded.
- **Summer Transition, Advising and Registration (STAR):** Students meet one-on-one with Student Success Coaches (SSCs) during STAR to sign their first scholarship contract. Students must agree to participate in the support program to receive the Purdue Promise award.
- **Boiler Gold Rush (BGR):** The Purdue Promise support program requires participation in BGR, Purdue’s welcome week experience. Purdue Promise covers students’ cost of participation.
- **GS 197:** The course is a first-year seminar offered in the fall semester and designed specifically for Purdue Promise freshmen. The instructors for the course are students’ assigned Student Success Coaches. Students meet at least once with coaches outside of class during the semester.
- **Student Success Coaching Meetings:** Between GS 197 and GS 405, students meet with SSCs two to eight times per semester. The program uses an internal color-coding system based on 12 factors determined to affect scholars’ academic standing and/or scholarship status. Green students are least at risk and meet at least twice with their coaches. Yellow students are at risk for academic probation status and meet with coaches two to three times. Red students are most at risk for academic dismissal and/or loss of scholarship. They meet with coaches four to eight times for academic recovery. The attached data references a publication that demonstrates that meeting completion has a statistically significant correlation to GPA. SSCs provide a safe, inclusive, and equitable space to increase students’ self-efficacy, self-advocacy, and help-seeking behavior by helping them explore the following questions: (1) What do I need to do ...? [... to achieve my goal, ... to remedy this situation, etc.], (2) What do I already know that can help me do what I need to do?, (3) What resources exist that can support me if I need help?

¹ retention, graduation, GPA, academic standing

² low-income, first-generation, underrepresented minority

- **Modules:** Students complete three online coaching modules each semester from their freshman spring semester through junior year. Modules address students' holistic wellbeing based on the Dimensions of Wellness from the Substance Abuse and Mental Health Services Administration (SAMHSA, 2017). The attached data references a publication that demonstrates that module completion has a statistically significant correlation to GPA.
- **Free Printing:** Purdue Promise supplements the annual printing quota students receive by offering free printing on the fourth floor of the Krach Leadership Center.
- **GS 405:** The course is a senior seminar titled "Life After College." Course topics focus on transition into the workplace, financial literacy, and lifelong financial planning.
- **Study Abroad:** Purdue Promise coordinates and supplements the cost of a three-week, three-credit experience in Spain during Maymester. Students typically pay \$500 or less for the trip.
- **Logging Outreach and Mining Data:** Staff track all interactions with students, including details about personal successes and challenges. They used this data for evidence-based decision-making and advocacy. They regularly respond to "issue lists" to reduce barriers to success.
- **21st Century Scholar Campus Mentor Network:** Staff commit to fostering collaborations with campus partners in order to assist participants and to remove barriers to students success. Staff also encourage students' maximum utilization of personal and professional networks.

LEARNING OUTCOMES

As a result of participating in the Purdue Promise four-year experience, students will:

- Maintained or returned to good academic standing, and have exceeded predicted academic outcomes.
- Maintained "on scholarship" status and utilized financial aid efficiently to graduate with a higher debt-free rate than the rate for Indiana residents at Purdue.
- Reported increased confidence in a defined set of life skills.
- Reflected on the value of their experiences and transferrable skills gained.
- Demonstrated preparation to enter the workforce, professional/graduate school, military, and/or supporting a family after college.

NOTABLE CHANGES FROM 2017-18 Academic Year

- Staffing expanded with the addition of two Student Success Coach positions.
- All Assistant Directors and Student Success Coaches certified as QPR Gatekeeper Instructors. QPR is a suicide prevention training provided to all Purdue Promise freshmen.
- Five staff certified as Intercultural Development Inventory (IDI) Qualified Administrators to support administration of the IDI during the program's annual study abroad experience.
- Three staff and 20 students traveled on the second Purdue Promise study abroad experience to Valencia, Spain. One staff member supported the Horizons experience in Cuzco, Peru.
- Program staff collaborated with Ascend Indiana to fill internships and full-time jobs in Indiana.
- Eight staff certified in Mental Health First Aid.
- Purdue Promise began providing coaching and support for Summer Start in 2016. At the end of 2017-18, involved parties decided support from Purdue Promise would cease after 2018-19.

OUR DATA

See the attached data summary.

2017-2018 Purdue Promise Data

Publication through the Consortium for Student Retention Data Exchange (CSRDE)

Michelle Ashcraft and Jess Ramsey from Purdue Promise collaborated with Dr. Hao Zhu and Taylor Broder from OIRAE to published “On-Time and Debt-Free: A Data-Driven Holistic Coaching Model for Low-Income Student Success at Purdue” through the CSRDE, and presented on the paper at the November 2017 National Symposium on Student Retention (NSSR). The program’s [Highlights](#) page on the website features the paper along with other past and current program successes.

Retention and Graduation Outcomes

The program collaborates with staff in OIRAE to calculate retention and graduation data following Census each fall. Census takes place during the second week of the fall semester and confirms full-time enrollment for the academic year. An explanation of the current cohorts also follows. OIRAE colleagues confirmed Purdue Promise Census data for the 2017-18 year on September 10, 2018.

Cohort	2017-18 Academic Year (Census year)	2018-19 Academic Year (current year)
2009	Alumni or Super Seniors	Alumni or Super Seniors
2010	Alumni or Super Seniors	Alumni or Super Seniors
2011	Alumni or Super Seniors	Alumni or Super Seniors
2012	Alumni or Super Seniors	Alumni or Super Seniors
2013	Alumni or Super Seniors	Alumni or Super Seniors
2014	Seniors	Alumni or Super Seniors
2015	Juniors	Seniors
2016	Sophomores	Juniors
2017	Freshmen	Sophomores
2018		Freshmen

To understand the populations represented in the following retention and graduation chart, please review the following definitions.

- **All Purdue Promise:** Purdue Promise program participants - All students are Indiana 21st Century Scholars. The 2009-2012 cohorts had a total family income requirement of \$40,000 or less. Since then the total family income requirement has been \$50,000 or less.
- **TfCS only:** First-time, full-time 21st Century Scholars enrolling in a fall semester and not served by Purdue Promise.
- **Pell Eligible only:** First-time, full-time Pell Eligible students enrolling in a fall semester and not served by Purdue Promise nor 21st Century Scholars.
- **Indiana Residents:** All first-time, full-time Indiana residents enrolling in a fall semester.
- **University Rate:** All first-time, full-time students enrolling in fall semester.

The retention and graduation chart shows one-year, two-year, and three-year retention rates, along with four-year, five-year, and six-year graduation rates since 2009.

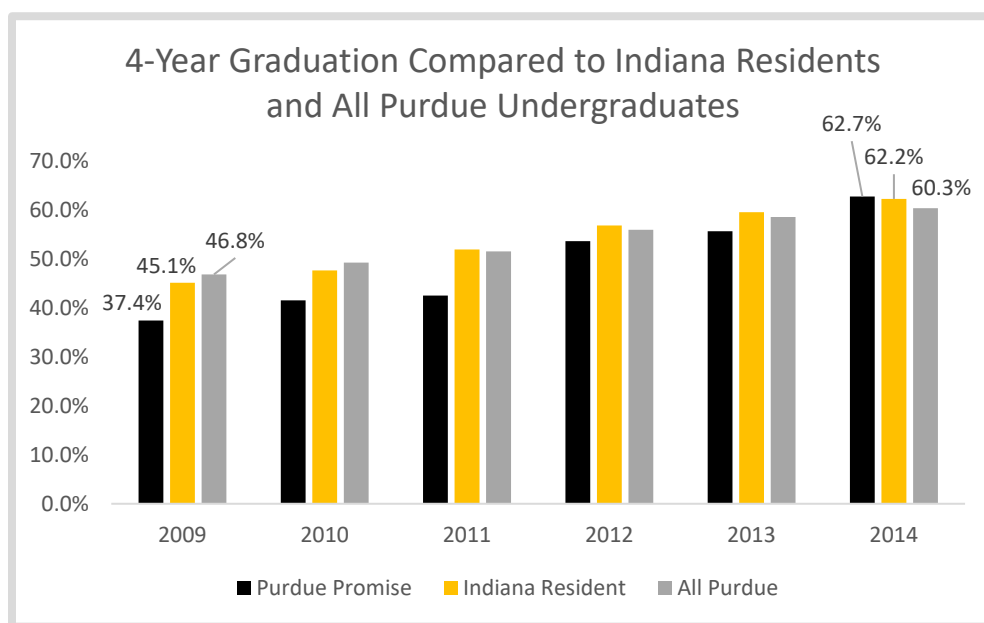
Cohort Year	Cohort	Original Cohort	1Yr Retention	2Yr Retention	3Yr Retention	4Yr Grad Rate	5Yr Grad Rate	6Yr Grad Rate
2009	All Purdue Promise	171	87.13%	82.46%	72.51%	37.43%	64.91%	69.59%
	TfCS only	163	84.05%	77.30%	73.01%	38.04%	61.96%	66.26%
	Pell Eligible only	855	83.86%	76.73%	72.05%	38.83%	61.29%	67.60%
	Indiana Residents	3804	88.80%	82.60%	77.60%	45.10%	69.30%	74.70%
	University Rate	6166	88.97%	82.50%	78.61%	46.76%	70.60%	75.43%
2010	All Purdue Promise	195	91.79%	81.54%	71.79%	41.54%	64.10%	67.69%
	TfCS only	122	85.25%	77.05%	72.95%	45.90%	68.85%	72.13%
	Pell Eligible only	935	86.84%	79.36%	75.40%	42.89%	66.95%	71.34%
	Indiana Residents	3746	89.90%	83.10%	78.80%	47.60%	71.40%	76.00%
	University Rate	6353	90.23%	83.69%	79.19%	49.22%	72.61%	76.97%
2011	All Purdue Promise	207	88.41%	81.16%	77.29%	42.51%	64.25%	69.08%
	TfCS only	125	88.00%	86.40%	82.40%	57.60%	79.20%	81.60%
	Pell Eligible only	103	84.99%	78.67%	74.15%	43.45%	68.28%	71.56%
	Indiana Residents	3484	90.60%	84.90%	81.10%	51.90%	73.90%	78.70%
	University Rate	6660	90.57%	84.34%	80.95%	51.49%	74.19%	78.74%
2012	All Purdue Promise	211	87.20%	80.09%	75.83%	53.55%	65.40%	70.62%
	TfCS only	137	87.59%	78.83%	74.45%	45.26%	68.61%	70.07%
	Pell Eligible only	800	86.25%	80.63%	76.75%	51.38%	70.00%	74.88%
	Indiana Residents	3446	91.20%	86.10%	82.60%	56.80%	76.20%	76.18%
	University Rate	6329	91.01%	86.10%	82.92%	55.85%	77.15%	81.18%
2013	All Purdue Promise	276	92.06%	87.00%	77.62%	55.60%	70.40%	
	TfCS only	125	87.00%	76.00%	74.40%	55.20%	69.60%	
	Pell Eligible only	782	87.21%	81.07%	76.47%	50.26%	67.26%	
	Indiana Residents	3461	92.50%	87.50%	82.60%	59.50%	76.63%	
	University Rate	6319	92.63%	87.69%	83.49%	58.52%	78.15%	
2014	All Purdue Promise	292	92.81%	85.27%	81.85%	62.67%		
	TfCS only	160	93.13%	88.75%	80.00%	56.25%		
	Pell Eligible only	688	90.26%	84.16%	78.63%	54.94%		
	Indiana Residents	3304	92.90%	87.90%	83.50%	62.20%		
	University Rate	6408	92.76%	88.03%	84.00%	60.25%		
2015	All Purdue Promise	347	90.20%	82.71%	75.79%			
	TfCS only	215	87.44%	80.93%	73.95%			
	Pell Eligible only	730	88.36%	84.25%	77.95%			
	Indiana Residents	3532	91.80%	87.50%	82.22%			
	University Rate	6855	91.76%	87.26%	82.99%			
2016	All Purdue Promise	308	90.26%	83.44%				
	TfCS only	240	92.50%	87.50%				
	Pell Eligible only	762	86.35%	81.10%				
	Indiana Residents	3802	91.30%	86.90%				
	University Rate	7229	91.64%	87.44%				
2017	All Purdue Promise	356	86.80%					
	TfCS only	195	85.64%					
	Pell Eligible only	808	88.00%					
	Indiana Residents	4085	91.43%					p < 0.01
	University Rate	7548	91.94%					p < 0.05

Closing the Gap on Degree Attainment

When the university created Purdue Promise, 21st Century Scholars were graduating approximately 10% behind the Purdue all-undergraduate four-year graduation rate. Since then the goal has been to close the attainment gap for the students served by Purdue Promise. That happened with the most recent graduating cohort, representing the 292 students who enrolled in fall 2014 and began graduating in May and August 2018. Their four-year graduation rate is 62.67% and *exceeds* the Purdue rate of 60.25%.

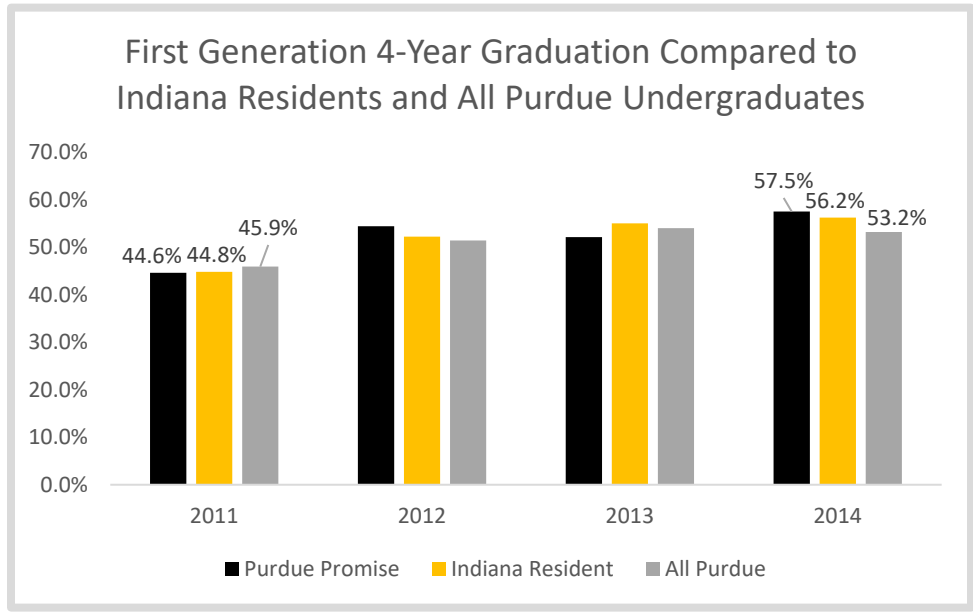
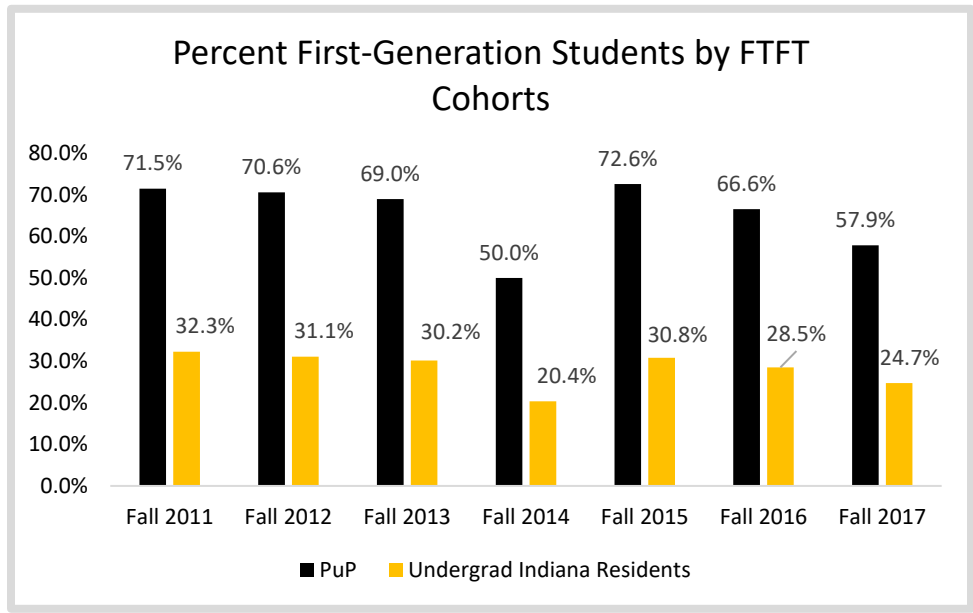
It is important to note that the 2014 cohort is the first to receive the current Purdue Promise coaching model all four years. The model was piloted in spring 2013 with the then junior cohort (students who enrolled in fall 2010), and piloted with all cohorts in 2013-14 (students who enrolled in 2011 and 2012 only received coaching for part of their Purdue experience). As the chart on the previous page demonstrates, the program started to see increases in graduation rates after implementing the model.

The growth in four-year graduation rates for Purdue Promise since 2009 represents a 25.3 percentage point increase compared to a 13.5 percentage point increase for the all Purdue over the same period.



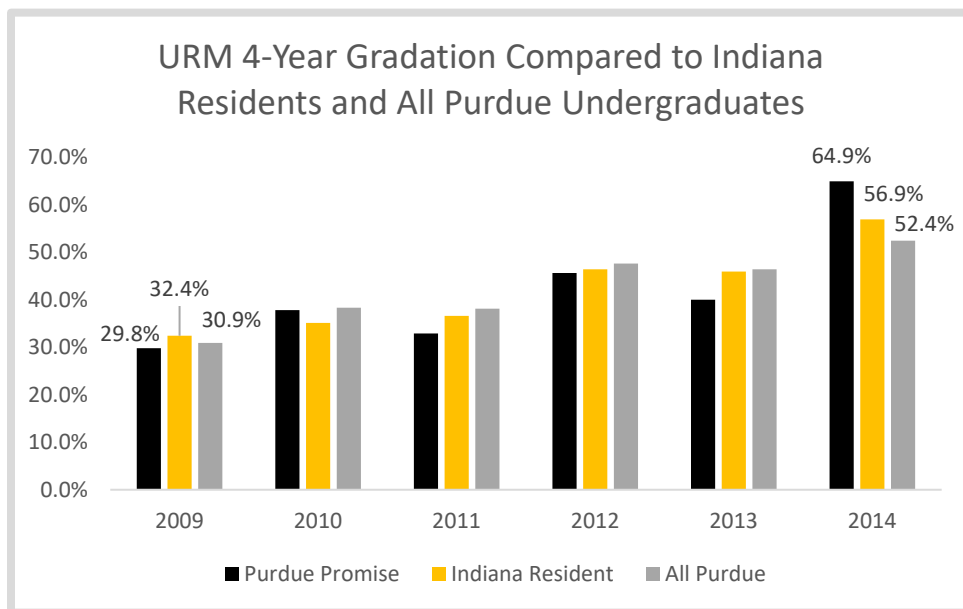
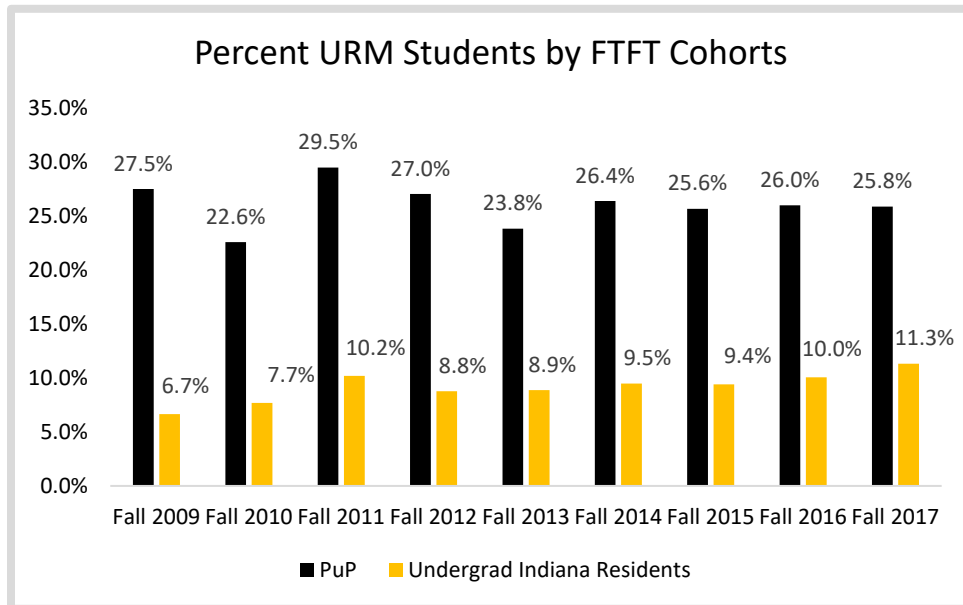
First Generation Students

21st Century Scholars across the state are more likely than their Indiana peers to be first-generation college students. Similarly, Purdue Promise students are more likely than their Purdue peers to be first-generation students. The first chart below demonstrates the percentage of first-generation students in Purdue Promise cohorts compared to other Indiana residents at Purdue. The second chart represents a comparison of four-year graduation rates for first-generation students in Purdue Promise compared to Indiana residents at Purdue and all Purdue undergraduates. Note that the first cohort represented is the 2011 cohort, as Purdue did not track first-generation student status prior to 2011. The success continues with the 2014 cohort, as first-generation students in Purdue Promise achieved a four-year graduation rate that was 4.3 percentage points higher than the all Purdue rate.



Underrepresented Minority Students

Purdue Promise students are also more likely than their Purdue peers to identify as underrepresented minorities (URM). The first chart below demonstrates the percentage of URM students in Purdue Promise cohorts compared to other Indiana residents at Purdue. The second chart represents a comparison of four-year graduation rates for URM students in Purdue Promise compared to Indiana residents at Purdue and all Purdue undergraduates. The success continues with the 2014 cohort, as first-generation students in Purdue Promise achieved a four-year graduation rate that was 12.5 percentage points higher than the all Purdue rate.

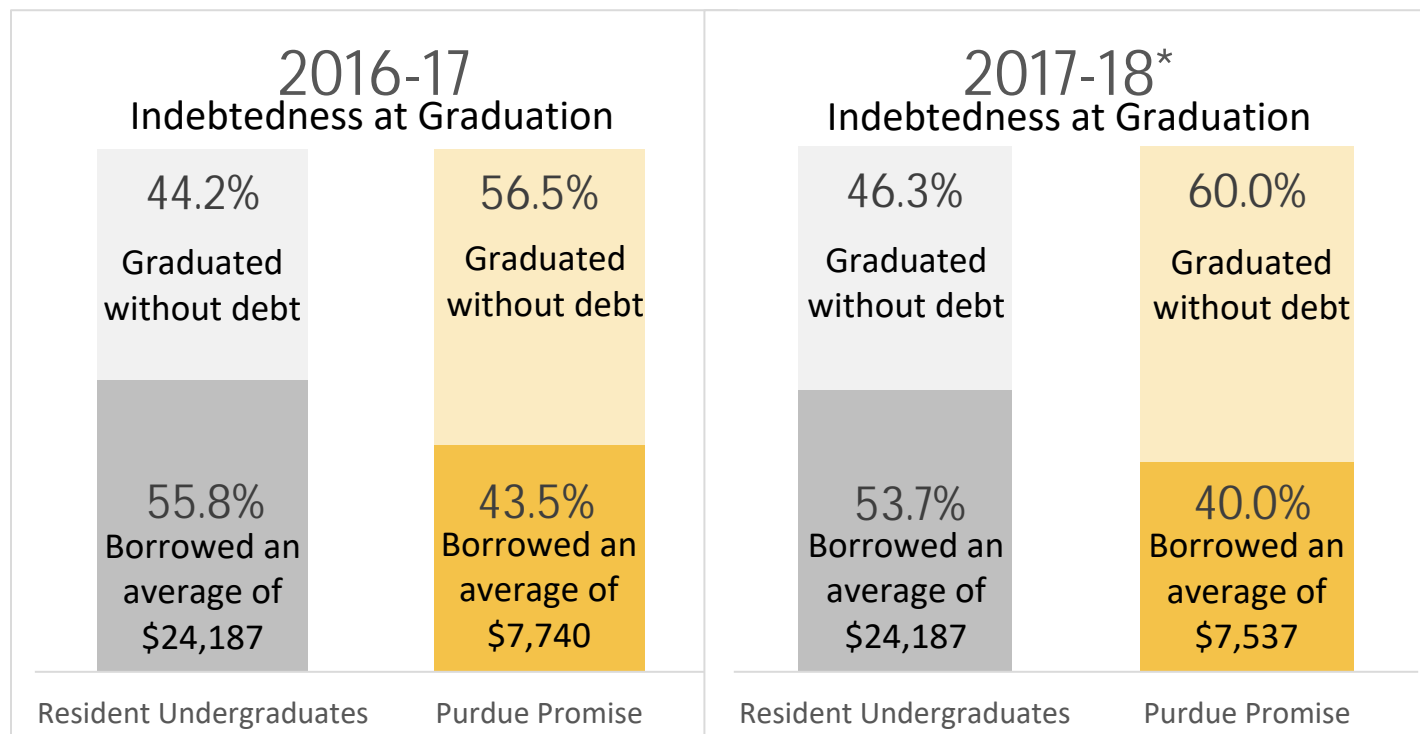


Increasing Affordability and Reducing Debt

While the goal of Purdue Promise is to graduate students on time and debt-free, prior to 2016-17 the program had not determine how well the program was doing at achieving the debt-free goal. In preparation for a presentation on the [October 2016 OIRAE Briefing on Purdue Promise](#), 53% of the 2013 cohort reported in a GS 405 assignment that they anticipated graduating debt-free.

The following chart demonstrates indebtedness at graduation, with a comparison between 2016-17 (when the 2013 cohort started to graduate) and 2017-18 (when the 2014 started to graduate). Both the

2013 and 2014 cohorts received coaching all four years. The current model, which includes a financial literacy emphasis, has been underway since the 2014 cohort enrolled.



*2017-18 data is preliminary until the Division of Financial Aid freezes data November 1, 2018 and finalizes analysis.

More Purdue Promise scholars graduate without debt compared to all resident undergraduates. Those who graduate with debt borrow less on average than all resident undergraduates. In 2017-18, 60% of Purdue Promise students graduated without debt compared to 46.3% of resident undergraduates, the of those who borrowed, the average borrowed was \$16,650 less than all resident undergraduates.

Study Abroad Outcomes

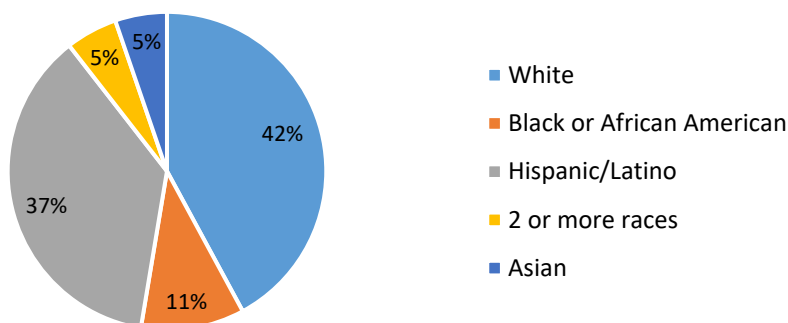
Following a pilot trip in May 2016 with Horizons TRiO Student Support Services to Spain and Morocco, Purdue Promise has led an annual three-week study abroad experience to Spain each Maymester. Students visit four cities total: Madrid, Toledo, Valencia, and Granada (with homestays in Valencia). The goal of the program is to provide affordable access to study abroad for student populations traditionally underrepresented in the experience at Purdue and nationally: low-income students, first-generation students, and students who identify at underrepresented minorities.

2018 Purdue Promise Study Abroad Participants (19 students)

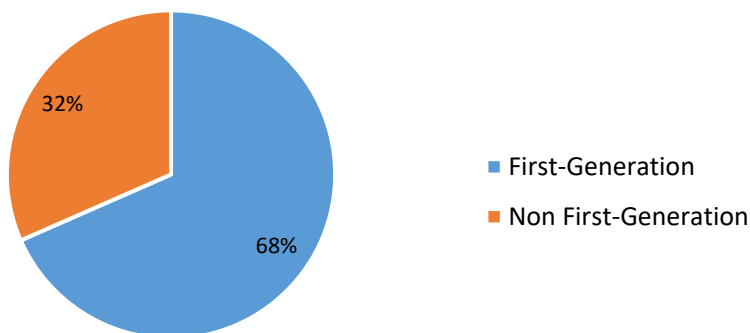
In 2018, 19 students participated in *Global Leadership in Valencia, Spain*. There were 2 juniors, 9 sophomores, and 8 freshmen. Of those selected, 4 identified as male and 16 as female. This is a higher representation of female students than the university average. For the 2018 Purdue Promise study abroad program, 47% of participants identified themselves as underrepresented minorities (URM). Of those students, 2 indicated their ethnicity as “Black or African American,” 7 indicated “Hispanic/Latino,”

and 1 indicated “2 or more races.” This is a higher representation of URM students than the university average. Of the 19 program participants, 13 identified as first-generation college students. This is a higher representation of first-generation college students than the university average.

2018 Participants by Ethnicity



2018 Participants by First-Generation Status



Intercultural Development Inventory (IDI):

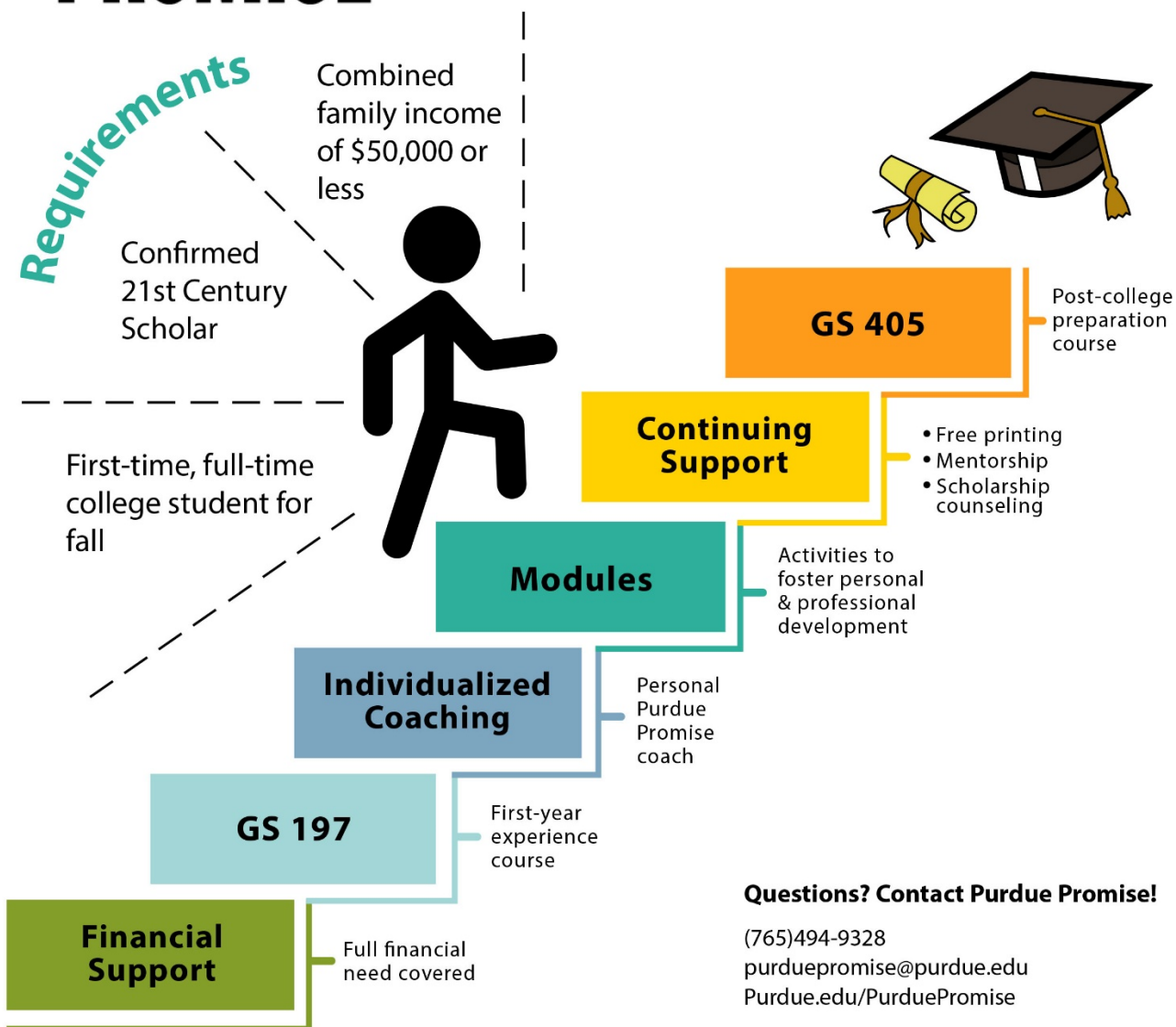
The overarching goal of the Purdue Promise study abroad program is to increase students’ intercultural competence. Purdue Promise facilitates participants completing the IDI assessment prior to departure from the U.S. and upon return from the trip. Students complete an IDI debrief with IDI Qualified Administrators (QAs) while in Spain in addition to a group debrief during one of the class sessions.

The most accurate indicator of intercultural competence on the IDI assessment is the Developmental Orientation (DO) scores. The DO score indicates a student’s primary orientation (or perspective) toward cultural differences. There are five stages on the Intercultural Continuum: Denial (score of less than 70 points), Polarization (70-85 points), Minimization (85-115 points), Acceptance (115-130), and Adaptation (a score of 130 or more points). The results of the IDI comparison reveal a 15.47% (13.88 point) increase in participants’ Developmental Orientation (DO), demonstrating intercultural growth.

	Perceived Orientation (PO)	Developmental Orientation (DO)
IDI Pre-Assessment	120.09	89.70
IDI Post-Assessment	126.10	103.58

PURDUE PROMISE

The Purdue Promise four-year experience is a scholarship program that helps eligible 21st Century Scholars be successful at Purdue University's West Lafayette campus through a combination of support services and financial aid.



Guiding Principles



Once Purdue Promise, Always Purdue Promise