

# ***UPDATE ON THE 2014 SECURITY FEEDBACK REPORT***

**University Senate**

**January 24, 2022**

# 2014 Security Feedback Report

## Overview and Recommendations

- Following the tragic Jan. 21, 2014 shooting of Andrew Boldt, former University Senate Vice Chair Dr. Patty Hart led a panel to evaluate Purdue community feedback on campus security and emergency preparedness
- Topics considered:
  - Physical facilities
  - Infrastructure
  - Notification and communication
  - Mental health
  - Preparedness education and training
  - Public safety responders
- Based on the report recommendations, the University took action in each of the areas

# *2014 Security Feedback Report*

## **Actions Complete – Physical Facilities and Infrastructure**

- Door locks, able to be locked from inside the classroom, were added to each general use classroom and are now included on general use classrooms in new construction facilities
- The Electrical Engineering site was renovated

# 2014 Security Feedback Report

## Actions Ongoing - Emergency Communication

- The Purdue West Lafayette campus continues to make emergency notifications to campus via the Purdue ALERT system
- Communication about emergency preparedness and crime prevention is shared via Purdue Today several times each semester
- Professors are urged to include emergency preparedness information in their lectures and syllabus
- In the event of a major campus emergency, Purdue retains an outside company (FEI) to provide a central crisis call center

# 2014 Security Feedback Report

## Actions Ongoing - Mental Health and First Responders

- Mental Health support through Student Life (website link)
  - Student Life provides training for Mental Health First Aid and QPR – Question, Persuade, Refer. Faculty, Staff and Students engage in this training.
- PSG and PGSG host Mental Health Action week.
- Human Resources has enhanced similar resources for employees
- Additional public safety responders were added to both PUPD and PUFD. They train for more than 80 hours per year per team member, and are guided by written SOPs

# 2014 Security Feedback Report

## Actions Ongoing - Education and Training

- Emergency preparedness education and training was enhanced to include both in person and online training
- Annual tornado and earthquake drill information is provided in *Purdue Today*
- 30 or more tabletop drills are provided on request per year.

# *Purdue Safety Rankings*

#15

**SAFEST COLLEGE TOWN IN THE U.S.**

*Source: Safewise, 2021*

#8

**BEST COLLEGE TOWN**

*Source: WalletHub, 2021*

# *THANK YOU*

Michael B. Cline, senior vice president, Administrative Operations  
mbcline@purdue.edu

Carol Shelby, senior director, Environmental Health and Public Safety  
cshelby@purdue.edu



# *FACULTY CLUB AT THE PURDUE MEMORIAL UNION*

Robert Wynkoop, Associate Vice President, Auxiliary Services  
wynkoop@purdue.edu

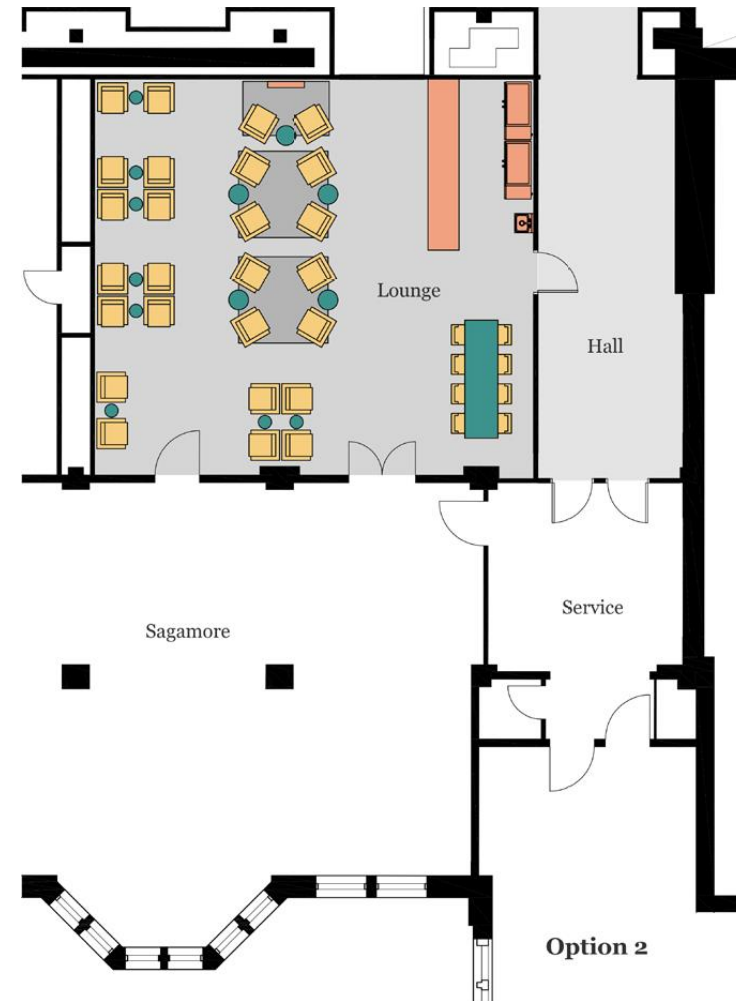
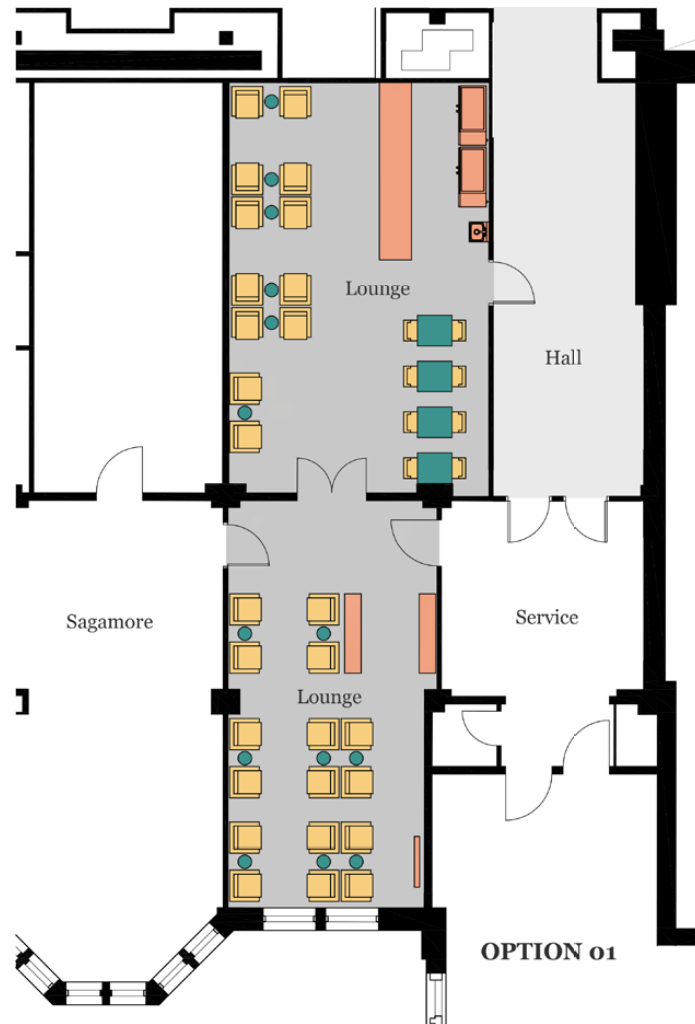
## *Faculty Club@Purdue Memorial Union*

- A private lounge specifically for Purdue faculty
  - Input from:
    - Purdue Faculty Association
    - HTM faculty
    - Senate Chair
    - Other clubs across the country
  - Located in the PMU's Sagamore Room
- Open Mon-Fri until 6pm
  - Complementary coffee, beverages, and snacks available all day
  - Attendant on site from 10am-6pm
  - Lunch menu offered daily
  - Bar service twice a week from 4-6pm

## *Potential Membership Fee Structure*

- Membership fees dependent on enrollment
  - 700 members - \$303 per year
  - 500 members - \$343 per year
  - 300 members - \$437 per year
- Covers costs to for renovations and operating costs
- Goal is to be cost neutral

# Club Location/Layout



# Faculty Club Rendering



# ***NEXT STEPS***

Review and advisement from Senate

Administrative Operations can assist with questions/additional ideas.