

THE REGENSTRIEF CENTER HEALTHCARE ENGINEERING



Regenstrief Center for
Healthcare Engineering

August 23

1

REGENSTRIEF CENTER FOR HEALTHCARE ENGINEERING

Impacts -driven approach based on community engagement and implementation to bridge discovery and innovation to healthcare systems and communities.



Health
Systems



Health
Data Science



Population Health
and Health Equity



Health Communication
and Education



Patient and Community-Engaged Healthcare Research Model

Impacts -driven approach
based on
community engagement and implementation
to bridge discovery
and innovation
to healthcare systems and communities

Unique and differentiated
healthcare engineering center in
the country

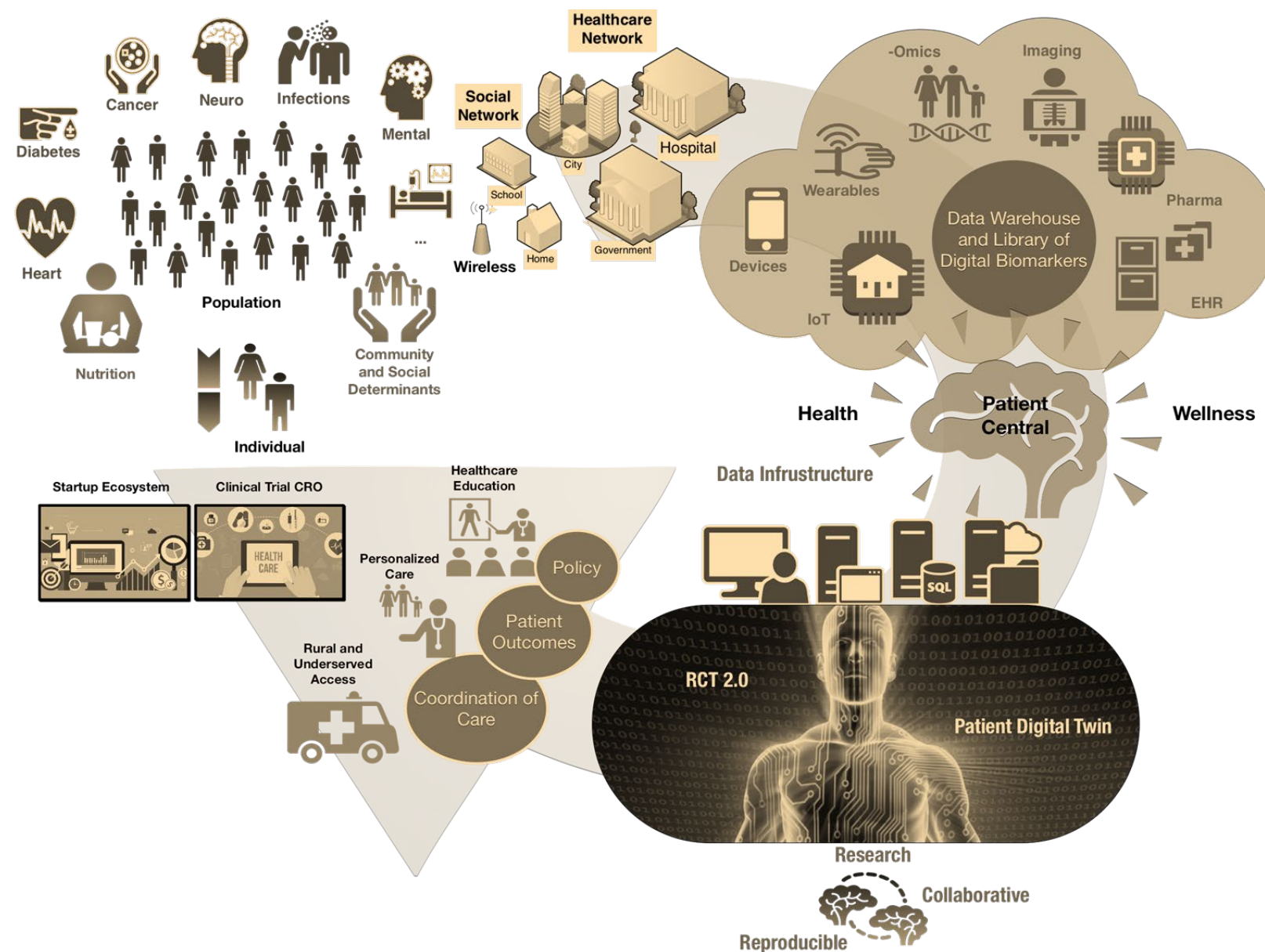
- **Health Systems** -Improve healthcare delivery and patient outcomes through the deployment of sustainable solutions in health systems by integrating our excellence in engineering, modeling, artificial intelligence, human factors, organizational behavior, and the social sciences.
- **Population Health and Health Equity** - Develop real-world solutions to improve population health and address the root causes of health inequities through meaningful community engagement.
- **Health Data Science** - Harness the power of data via our strengths in computer science, statistics, and mathematics, to drive discovery and innovation within health systems and among populations.
- **Health Education and Communication** - Break down communication boundaries to translate discoveries and innovations into applied solutions that can improve everyone's health and wellbeing.



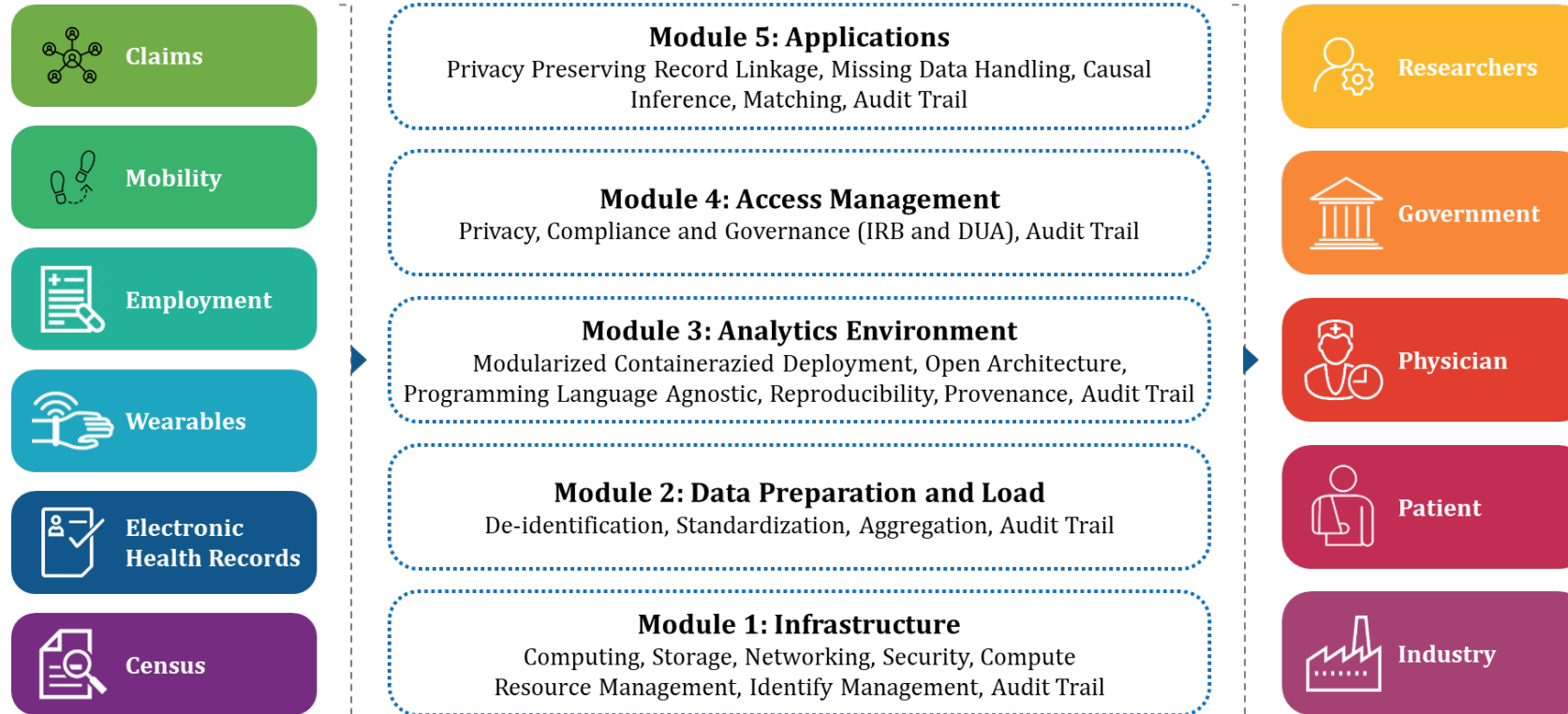
Partnerships
Clinical, Community
and Industry

Discovery and Innovation
Data Science, AI,
and Device Technology

Implementation
Community and Patient Centered



Healthcare and Health Equity Data Hub



RCHE developing and supporting the only HIPAA-aligned data platform on campus

Health Equity Data Hub :

- to support Health Equity driven research on campus and in the state
- to support implementation best practices, interventions, and policy

Community Health Workforce Initiative

Community health workers (CHW) are essential to addressing inequities in healthcare delivery and public health.

CHWDI's mission is to support the expansion and sustainability of the Indiana CHW workforce. Engaging key partners (below) in government, community-based, clinical, and academic sectors to:

- **Design sustainable CHW programs**
- **Conduct research and evaluation** on CHW effectiveness and cost-effectiveness
- **Build capacity for CHW-employing organizations** to initiate their own health equity programming and evaluations
- **Inform policy and advocacy** for improved reimbursement mechanisms for CHW services and integration into health systems



Regenstrief Center for
Healthcare Engineering



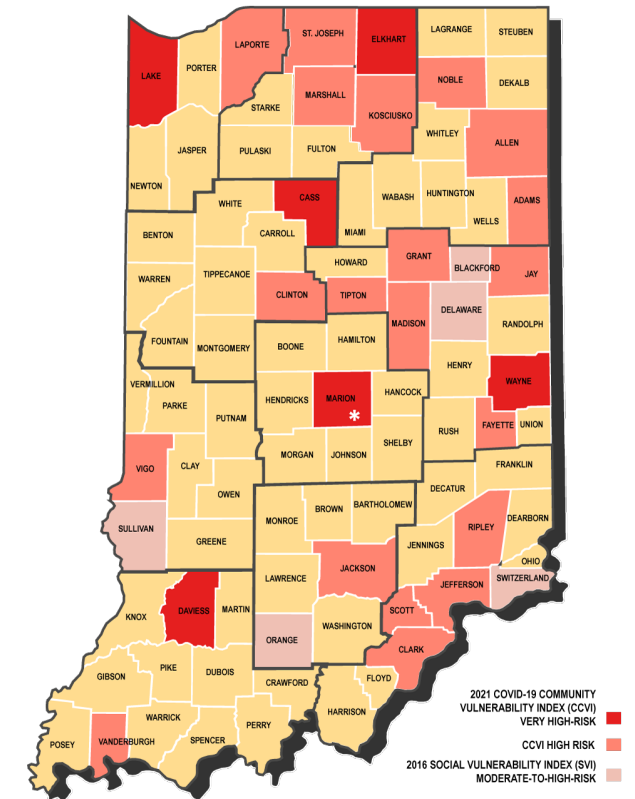
August 23

6

Purdue University ~~HOPE~~ Statewide Initiative

The Indiana State Department of Health's IHOPE initiative, in partnership with Purdue University and over 230 organizations, aims to reduce health disparities for better health outcomes.

In this Initiative, Purdue University addresses the social drivers of health through community-driven engagement, collaboration, and innovative strategies to build capacity and improve health outcomes for all populations.



* Marion County initiatives funded under separate program

www.i-hope.purdue.edu

Hope Initiative Co-Basement Partnerships

Partnerships

New, Existing, and Expanded Partnership by Sector July 2021 – March 2023



Community Work and Populations Serving

Communities

Allen, Cass, Clark, Daviess, Delaware, Elkhart, Fayette, Lake, Madison, Scott, St. Joseph, Vanderburgh, and Wayne Counties

Populations

- Black and Brown
- Rural
- Youth
- Individuals living with disabilities
- Seniors, Veterans, Inmates

Data and Evaluation

- CDC Performance Measures for over 230 organizations
- Individualized data analysis for sub-grantee activities

Seed Funding

- 12 Requests Received
- 3 Not Funded, 3 on Hold, 2 Under Review
- 4 Funded to date = \$ 26,396



Focus Areas

- Food Insecurity
- Mental Health & SUD
- Emerging Issues
- Health Equity / DEI Training

Health Equity Projects

- 30 Completed
- 44 In Progress

IMPACT

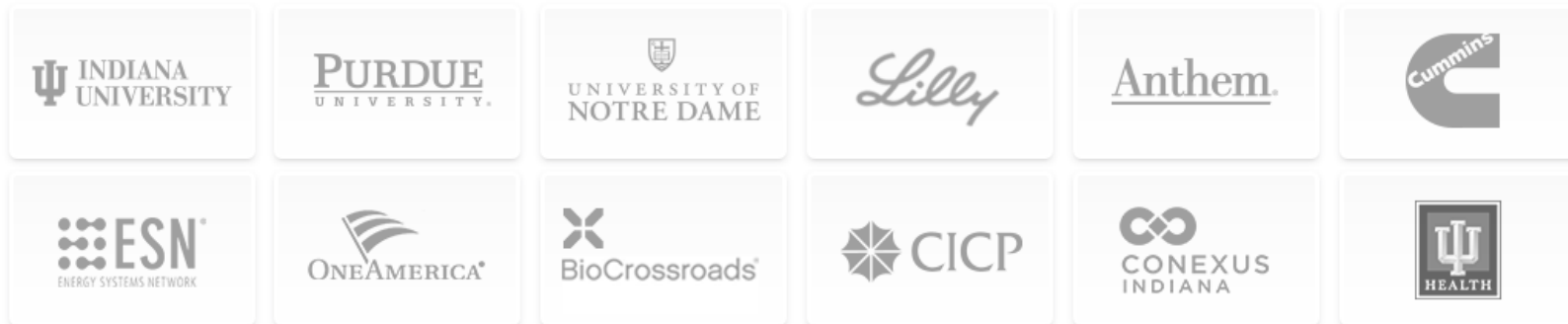
- Policy / Systems Change
- Workforce Development Pipeline
- FIMR Infrastructure Support & Implementation
- Healthcare Access & Quality – Improved Processes
- Cross Cultural Communication Improved for Maternal Child Health
- Coordinated Capacity Building - SUD/ TASC
- Campus & Community Engagement

AnalytiXAN C/CP Funded Initiative

A multi-partner, statewide initiative to develop a digital community to drive innovation within Indiana

Purdue engaged with:

- Data assets in life sciences
- Data assets in manufacturing
- Attracting talent to engage in industry-academia aligned projects



Strategic, Government, Industry Partnerships

Strategic Engagements



State-Based Partnerships



+ many more...