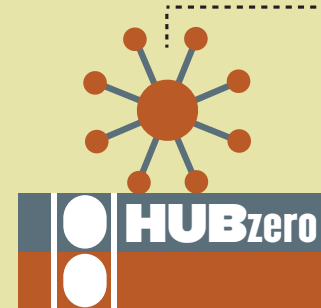


SCHOLARLY REPOSITORY TOOLS

PubMed Central

Investigators with NIH grants are required to deposit copies of peer-reviewed publications in PubMed Central within 12 months of the acceptance of the publication by a journal. Citations to NIH-funded publications in progress reports and renewal applications also require PMC reference numbers.

More info: www.ncbi.nlm.nih.gov/pmc



HUBzero

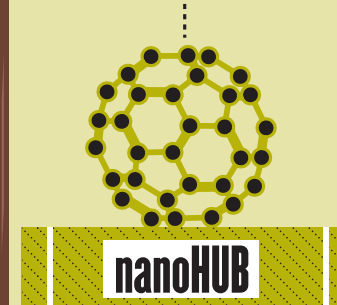
Created at Purdue, HUBzero is a free open source software platform powering nanoHUB.org, PURR and 60 other websites around the world, supporting scientific communities involved in research, education and online collaboration. Altogether, these sites served more than 1.8 million visitors worldwide during the past year alone. Currently, 16 sites are based at Purdue.

More info: www.hubzero.org

ORCID

ORCID provides a persistent digital identifier that distinguishes you from every other researcher. Use your ORCID number on your webpage, when you submit publications, apply for grants, and in any research workflow to ensure you get credit for your work.

More info: www.orcid.org



nanoHUB

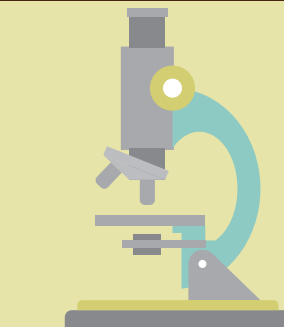
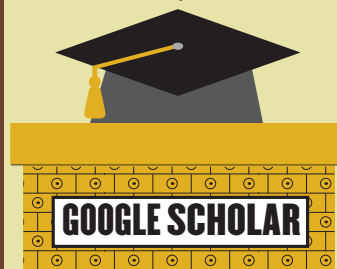
Through nanoHUB (a HUBzero site), you can publish simulation tools, presentations and downloadable content, sharing your material with other researchers as well as students. With more than a quarter million annual users, nanoHUB provides a vast audience for outreach. Usage data allows you to assess impact, including citations in scientific literature.

More info: www.nanoHUB.org

Google Scholar

By creating an account and building a public profile in Google Scholar, you can increase your visibility, share publications easily and track citations. Google Scholar also calculates a platform-dependent h-index.

More info: <http://scholar.google.com>



PURR

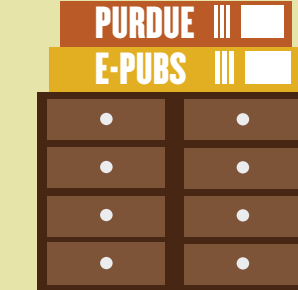
A web-based platform and research core facility (and a HUBzero site), PURR allows you to create a data management plan, privately upload and share files with collaborators at Purdue and beyond, archive your data, and publish it with a unique digital object identifier so that people can easily cite your data and give you credit. You'll get monthly reports on data access of published work.

More info: <http://purr.purdue.edu>

Digital Measures

Like many of our peer and CIC institutions, Purdue is implementing Activity Insight from Digital Measures, software designed to organize, manage and report on faculty activities and CV data.

More info: www.purdue.edu/provost/initiatives/digitalmeasures/index.html



Purdue e-Pubs

Purdue e-Pubs is an institutional document repository providing free global online open access to published journal articles, technical reports, working papers, conference papers, workshop materials, theses and dissertations, and other similar scholarly works associated with Purdue. Works are indexed by major search engines such as Google and Google Scholar, and included in the Libraries catalog. Automated monthly COUNTER-compliant download statistic reports are also available.

More info: <http://docs.lib.purdue.edu/about.html>