

3RD ANNUAL HEALTH EQUITY SUMMIT

**Dr. Jerome Adams, Executive Director, Health Equity
Initiatives**

Opening Remarks

PROVOST PATRICK WOLFE

Opening Remarks



*DR. KAREN PLAUT,
EXECUTIVE VICE PRESIDENT
FOR RESEARCH*

Opening Remarks



*DR. JEROME ADAMS,
EXECUTIVE DIRECTOR OF
HEALTH EQUITY INITIATIVES*



HEI Vision and Progress

HEALTH EQUITY AT PURDUE

VISION, PROGRESS AND FUTURE DIRECTIONS

Jerome Adams MD, MPH, FASA

**Distinguished Professor and Executive Director of
Health Equity Initiatives**

40,000

UNDERGRADUATE STUDENTS

12,000

GRADUATE STUDENTS

10,000 +

FACULTY AND STAFF

12

COLLEGES



Purdue University has earned the distinction of being an R1 university. Purdue is 1 of 71 NCI designated cancer centers, & 1 of only 7 in the country that focuses 100% of its efforts on laboratory research.

THE LAND GRANT MISSION

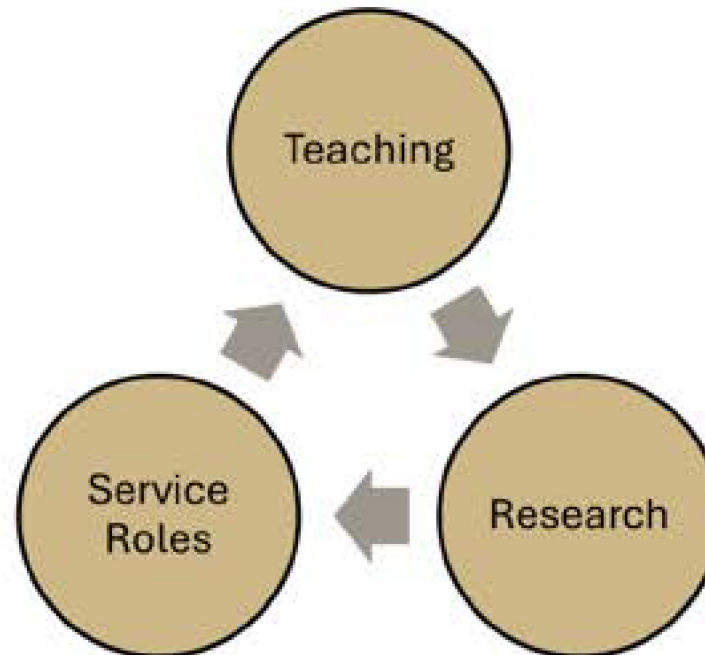


Health Equity Initiatives

Land-Grant universities are built on teaching, service roles and research. "Land-grant universities distinguish themselves from other institutions by directing their collective brainpower and resources toward research that addresses society's economic, political or social problems."

"We were going to actually take all of that knowledge and deliberately extend the opportunity to use it, to learn it, to the whole state of Indiana. More broadly, to the people of the country."

- Martin Jischke, former Purdue University President

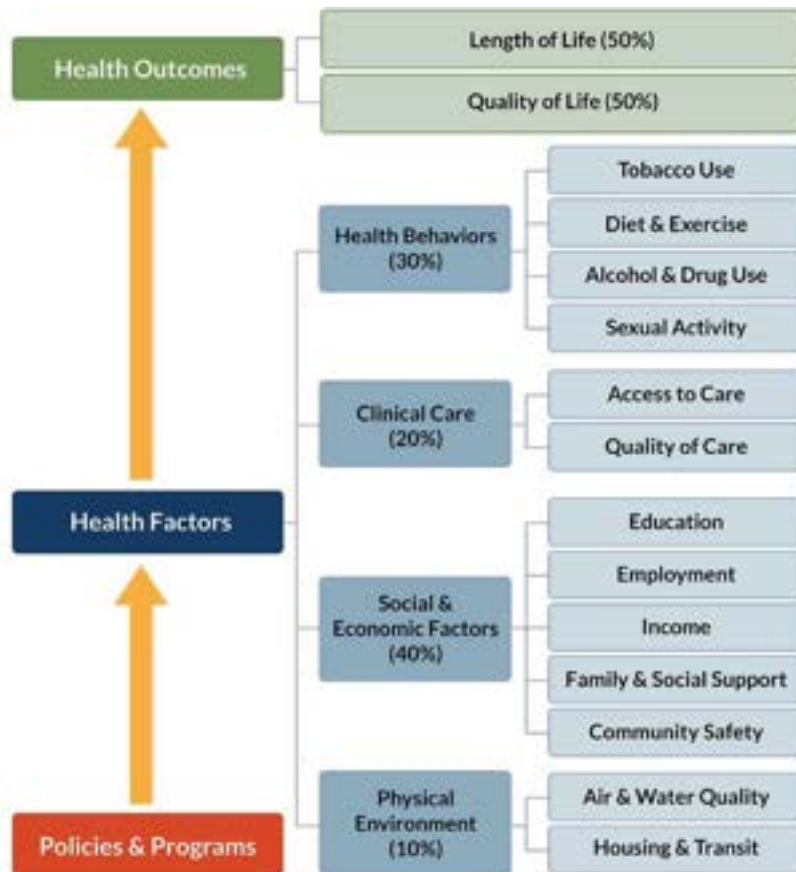


What is health?

Health is more than genetics & medical care. Social drivers of health are the conditions and the places where people live, learn, work, play & worship that can affect a wide range of health & quality of life risks & outcomes.



Healthcare is not Health...



What We Spend
On Being Healthy



What are health disparities?

We focus on health disparities as preventable differences in the burden of disease, injury, violence, or opportunities to achieve optimal health that are experiences by populations that have been disadvantaged by their social or economic status, geographic location, and environment.



What is health equity?

Health equity is when everyone, regardless of race, sex, sexual orientation, disability, SES, geographic location, or other societal constructs have fair & just access, opportunity, & resources to achieve their highest potential for health.



What is health equity?

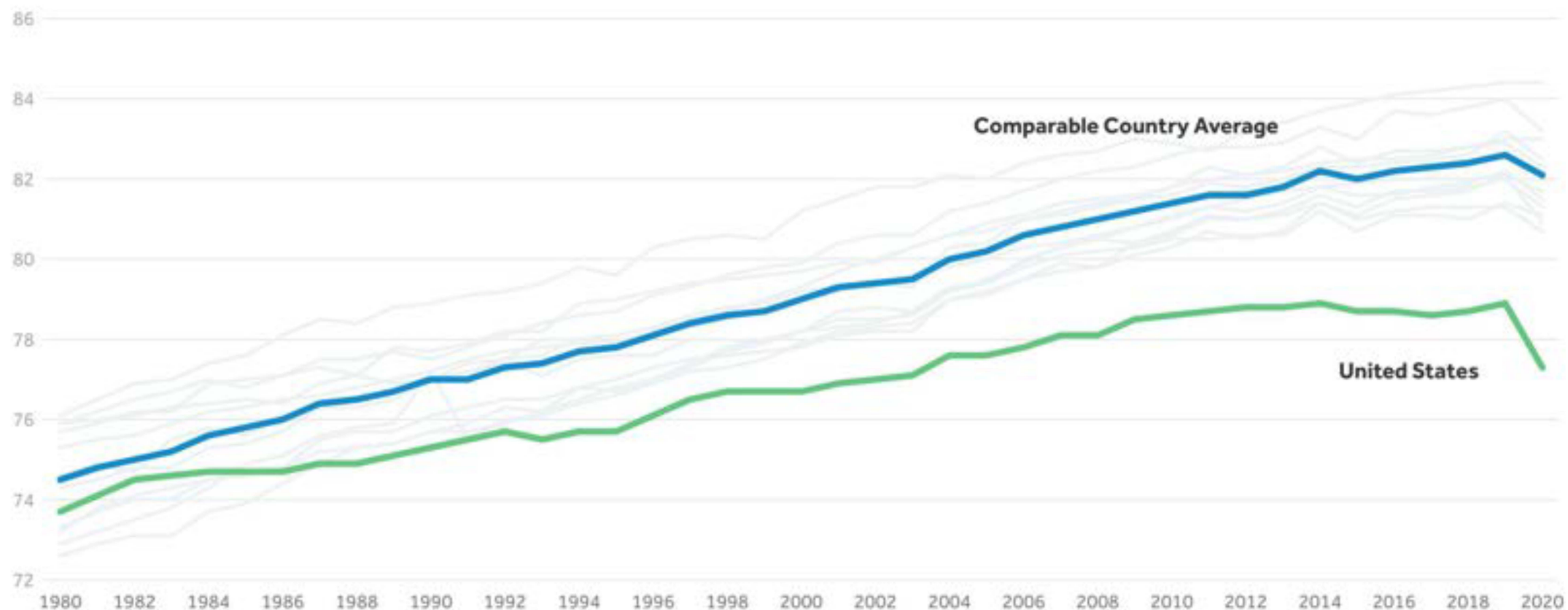
Health equity is when everyone has a fair opportunity to make healthy choices and can be their healthiest and happiest version of themselves



The background of the slide features a dark, textured pattern. It consists of large, irregular, dark shapes that resemble cells or biological structures, set against a lighter, brownish-grey background with a fine grid or mesh pattern. The overall effect is a complex, organic-looking texture.

Health inequities are a major contributor to our U.S. health disadvantage...

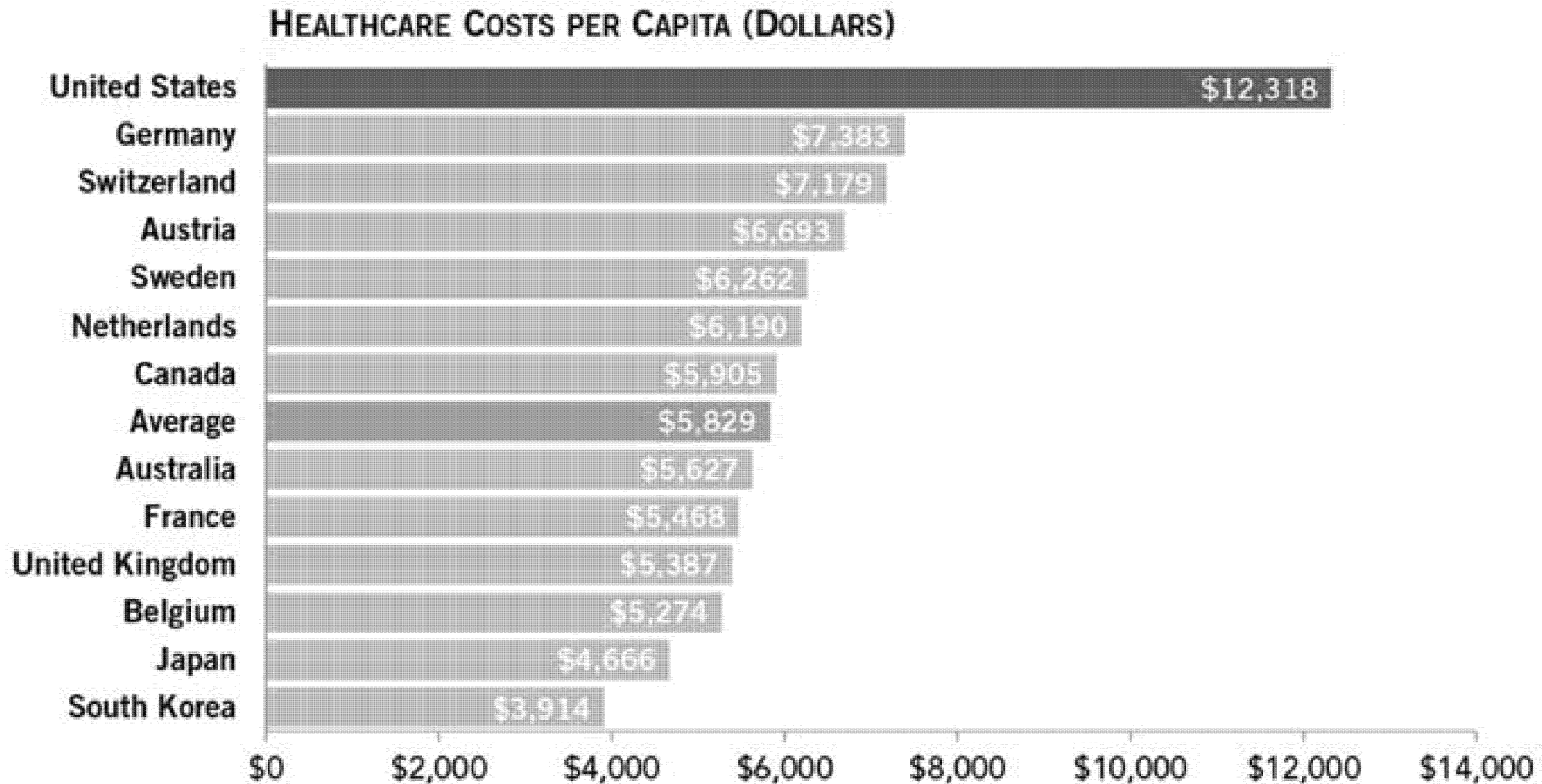
Life expectancy at birth in years, 1980-2020



Notes: Data prior to 2020 are from OECD. 2020 data are from CanStat, the CDC, OECD, and Public Health England. 2019 life expectancy values are used for Australia and Japan in 2020. Life expectancy for the United Kingdom in 2020 was calculated by taking the weighted mean of provisional life expectancy values for males and females in England. Break in series for Canada in 1982, Germany in 1991, Switzerland and Belgium in 2011, and France in 2013.

Source: KFF Analysis of CDC, OECD, StatCan, Office for National Statistics, and Public Health England data

U.S. per capita healthcare spending is over twice the average of other wealthy countries



SOURCE: Organisation for Economic Co-operation and Development, *OECD Health Statistics 2022*, July 2022.

NOTES: Data are latest available, which was 2019, 2020, or 2021. Average does not include the United States. The five countries with the largest economies and those with both an above median GDP and GDP per capita, relative to all OECD countries, were included. Chart uses purchasing power parities to convert data into U.S. dollars.

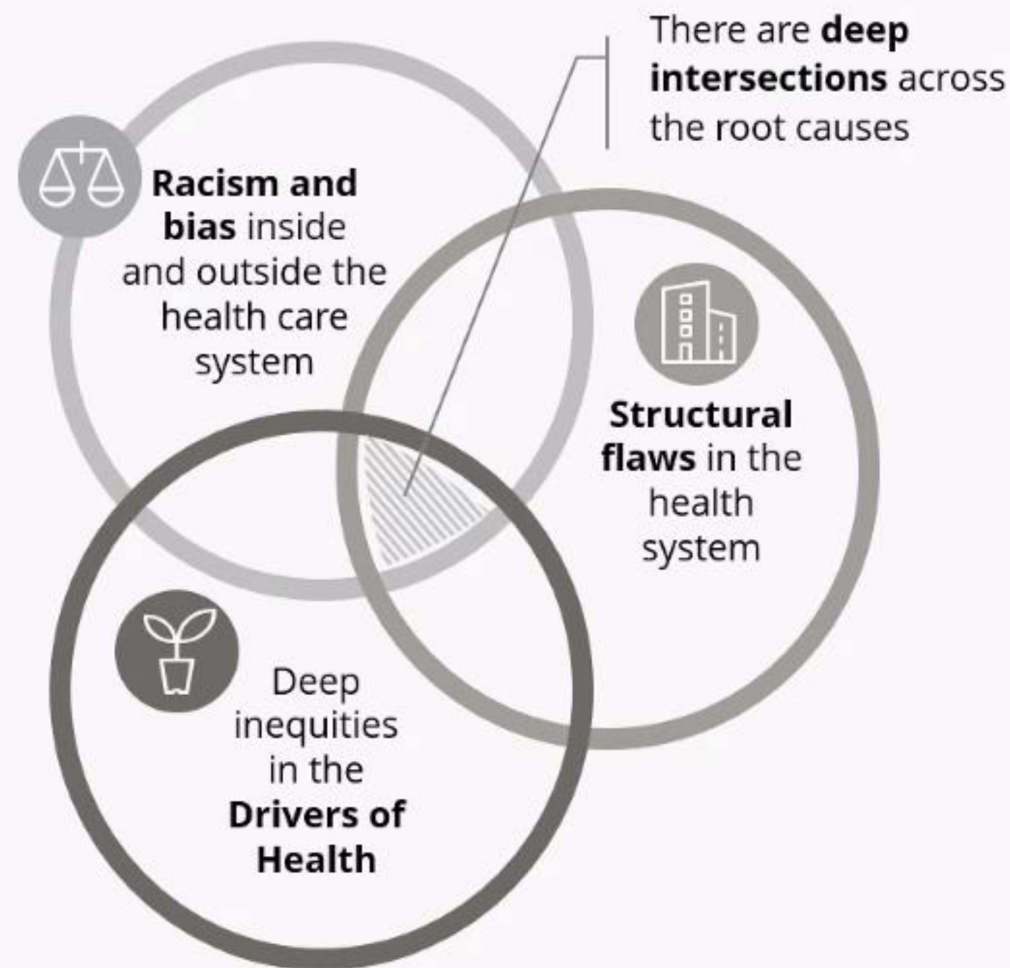
Health inequities, driven by root causes, are estimated to cost the United States \$320 billion a year!¹



Health Equity Initiatives

1) According to a recent study by Deloitte

In order to achieve health equity at scale, we must impact the root causes of inequities



HEI TEAM



Executive Director – Dr. Jerome Adams

Senior Director – Holly Wood

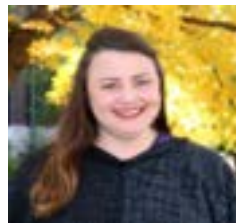
Project Manager – Aubrey Anderson

Executive Assistant – Brandi Plantenga

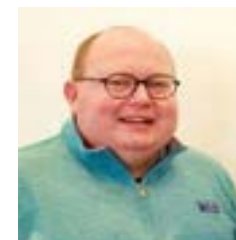
Health Equity Intern – Marla Winters

OUR FACULTY CHAMPIONS

Food for Health – Dr. Haley Oliver



Infectious Diseases – Dr. Steve Steinhubl & Dr. Randy Hubach

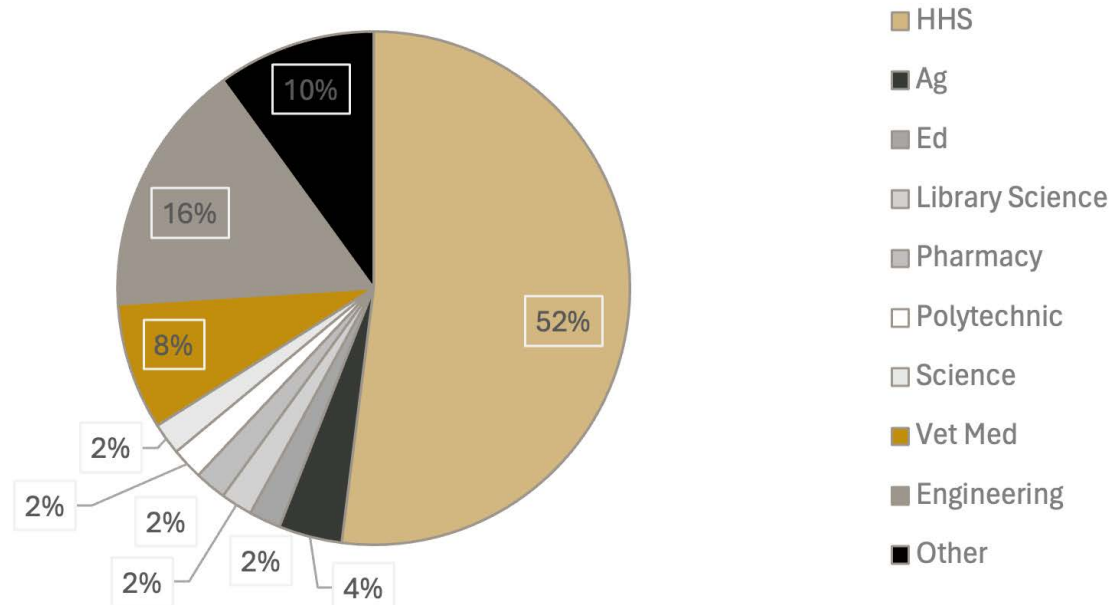


Mental Health & Substance Use Disorders – Dr. Nicole Adams

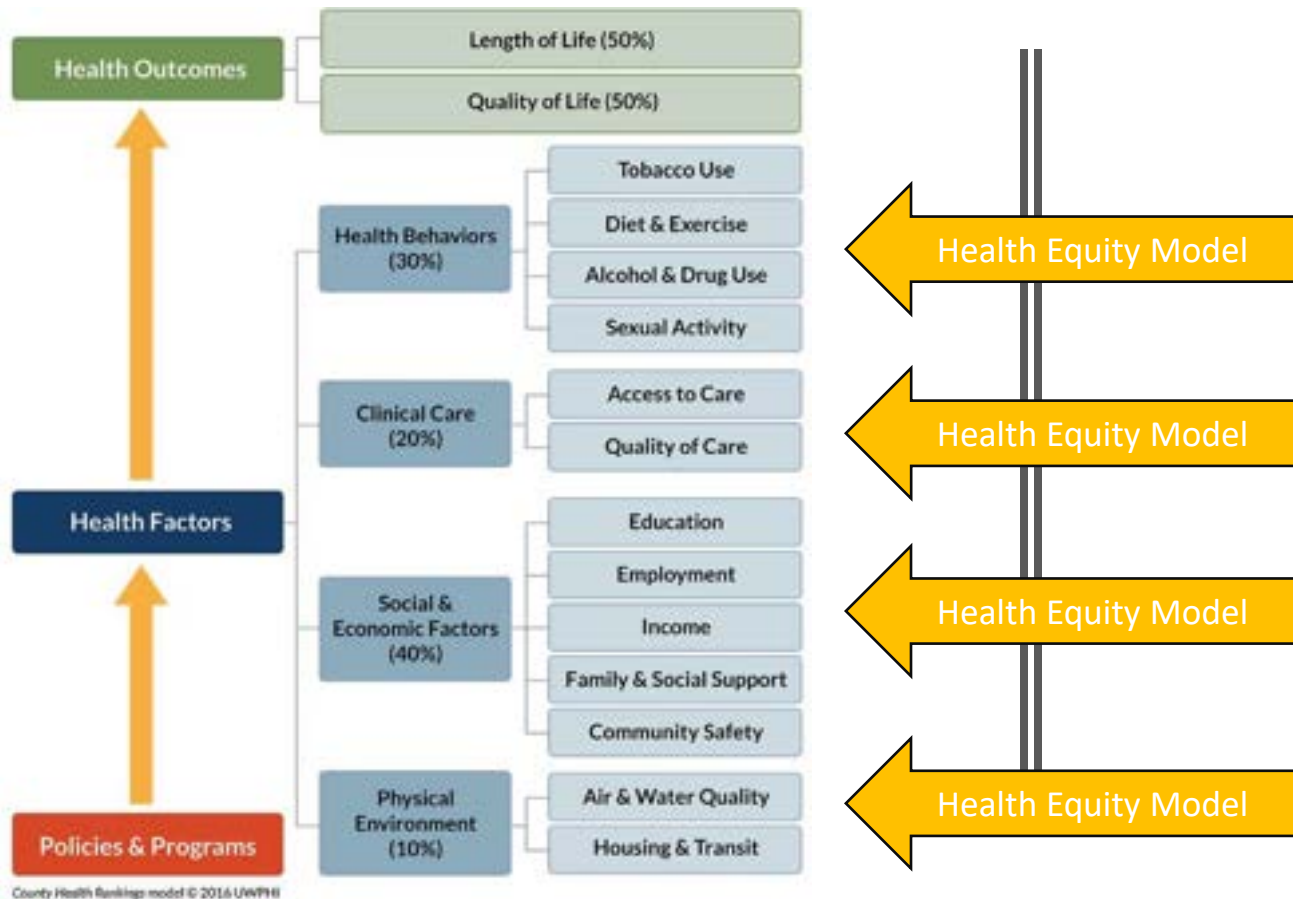


OUR HEI WORKGROUP

Workgroup Members



Health equity IS health (and wellbeing)!



- College of Agriculture
- College of Education
- College of Engineering
- Exploratory Studies
- College of Health and Human Sciences
- College of Liberal Arts
- Krannert School of Management
- College of Pharmacy
- Purdue Polytechnic Institute
- College of Science
- College of Veterinary Medicine

HEI IN 2023

- **National visibility by facilitating visits to campus with Dr. Judy Monroe, Dr. Rahul Gupta, & now Dr. Francis S. Collins, connecting faculty with National and global partners and meetings**
- **Involvement with student organizations, like Project Icarus, classroom lectures, letters of support/recommendation for students & faculty working on grant applications**
- **Collaboration with the Brian Lamb School of Communication & Dr. Evan Perrault, the Regenstrief Center for Healthcare Engineering, & the Department of Public Health to be able to serve as a preceptor location for an undergraduate internship**
- **Ireland partnership, NBA Partnership, Work with Local health departments and hospitals**
- **PBS Invisible Corps Screening in partnership with the College of Pharmacy, the College of Veterinary Medicine, the College of Health & Human Sciences, & the Honors College**
- **Worked with Eli Lilly to promote diversity in clinical research and STEM in Indianapolis, Lake Co.**
- **Started running social media platforms; 380+ followers on LinkedIn**

WHAT'S NEXT?

- **Continue to engage with students/student groups & provide opportunities for volunteering, mentorship, & structured learning opportunities**
- **Expand support for new hires, including the equity cluster hires**
- **Support data collection and research to make the case for health improvement in Indiana and beyond**
- **Support Indiana Health First implementation**
- **New partnership with North Central Health Services (NCHS)**
 - **Community benefit grant: NCHS will provide \$1 million annually over the next four years for capacity building, data & evaluation support, & technical assistance efforts within NCHS's 8-county region. This service region includes Tippecanoe, Benton, Warren, Carroll, Cass, Clinton, Fountain, White, and Montgomery counties.**

HEALTH CARE

A red state boosted public health funding by 1,500 percent. This is how they did it.

How careful messaging, a healthy budget and smart leadership boosted local public health funding in Indiana by 1,500 percent.

THIS YEAR, HOLCOMB PUSHED A 1,500-PERCENT INCREASE IN STATE DOLLARS TO LOCAL HEALTH DEPARTMENTS THROUGH THE GOP-CONTROLLED LEGISLATURE, A SIGNIFICANT VICTORY IN A STATE THAT CONSISTENTLY RANKS AMONG THE BOTTOM FOR PUBLIC HEALTH OUTCOMES.



IT ALSO MARKS A NOTABLE DEVIATION FROM THE APPROACH THE REPUBLICAN PARTY — FROM STATE LAWMAKERS TO PRESIDENTIAL CANDIDATES — HAS TAKEN TO PUBLIC HEALTH POST-PANDEMIC AS IT LEANS INTO THE SIZABLE WING OF THE PARTY SKEPTICAL OF GOVERNMENT AND PUBLIC HEALTH AHEAD OF THE 2024 ELECTION.

Indiana Gov. Eric Holcomb spent more time talking specifically about public health in his State of the State address this year than any other governor. | Darron Cummings/AP Photo

Economic Case for Public Health

- Good health is the foundation of our ability to thrive, from schools to the economy.
- Public health services are best delivered locally by those who know their communities best
- Investing in prevention creates healthier communities
- Easier to recruit workers
- Makes communities more attractive for businesses to locate when they have a healthy workforce
- Reduces healthcare costs for businesses, increases worker productivity
- Makes Indiana a healthier state, physically and fiscally

HIGH



Opportunity neighborhoods



LOW

Quality schools

Access to early childcare and education

Number of parks and green spaces

Quality housing and public transportation

Access to healthy foods

Availability of jobs and healthy, on-the-job workers

Opportunities for economic growth

Healthy living conditions

Feelings of civic pride and responsibility

Access to local suppliers



CONVENIENCE STORE



So what is digital health equity?

Digital health equity is everyone has fair access to, and trust in, and benefit from new digital health technologies, so all communities can become and stay healthy!

Beware of equity and ethics concerns



- Digital Divide
 - By geography, education, age, economics, home environment (ie privacy), trust deficits (who has my data and what will they be doing with it?)
- Bias
 - AI algorithms are subject to the garbage in = garbage out problem
 - Bias that's baked in can never be fully corrected for, and often gets amplified
- How is the information being used?
 - Are you subjecting people to discrimination (eg jobs, insurance, sports)?
 - Who is profiting? (eg Henrietta Lacks)
 - Is information being given BACK to the patient
 - Just because you can collect and analyze doesn't mean you always should (eg cloning, picking characteristics of your child, knowing when you will die)



Representation and Communication are KEY!

- Need diverse representation at the table from the start, to see past your blind spots
- Need early and frequent outreach to communities- especially marginalized communities- to make sure new technologies are developed in way that meets the communities needs, and not just industry's needs
- Must acknowledge the trust gap, and be proactive vs reactive to it

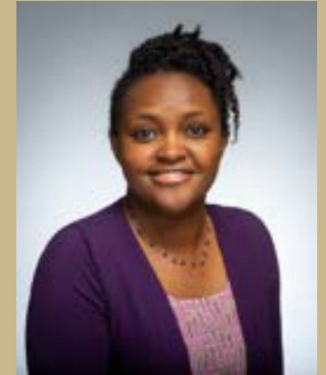
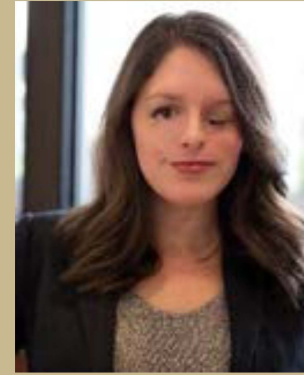
HOW TO GET INVOLVED

- **Follow us on LinkedIn & Twitter**  
 - **Scan QR codes at your table to take you directly to our pages**
- **Attend our monthly faculty meetings**
- **Reach out - we are here to support YOU!!!**

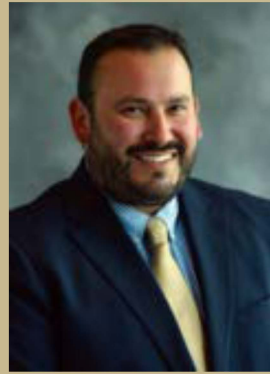
*HOLLY WOOD, SENIOR
DIRECTOR OF HEALTH
EQUITY INITIATIVES*



HEI Vision and Progress



Thank you to all of our partners!



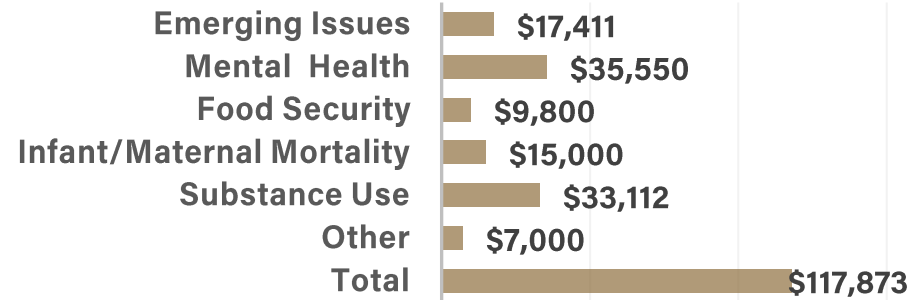
Seed Funding to Advance Health Equity

18 Projects, 11 Counties*

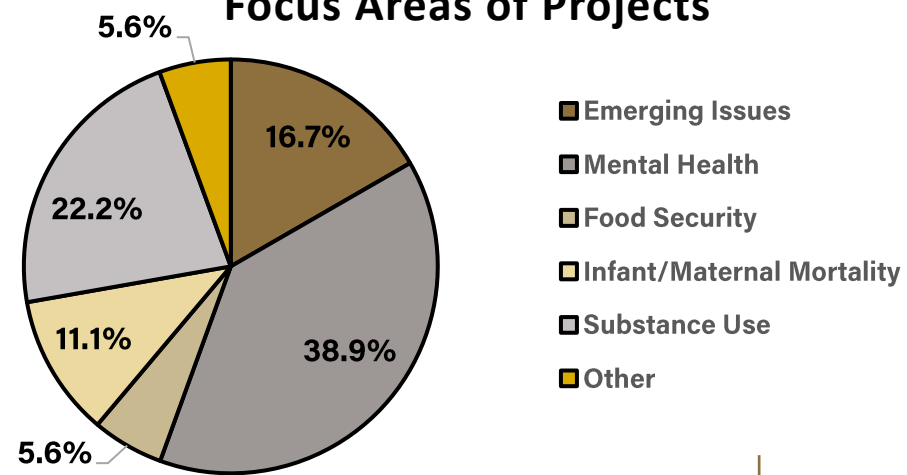


*One project is split in St. Joseph and Elkhart, counted in St. Joseph

Dollars Allocated by Focus Areas of Projects

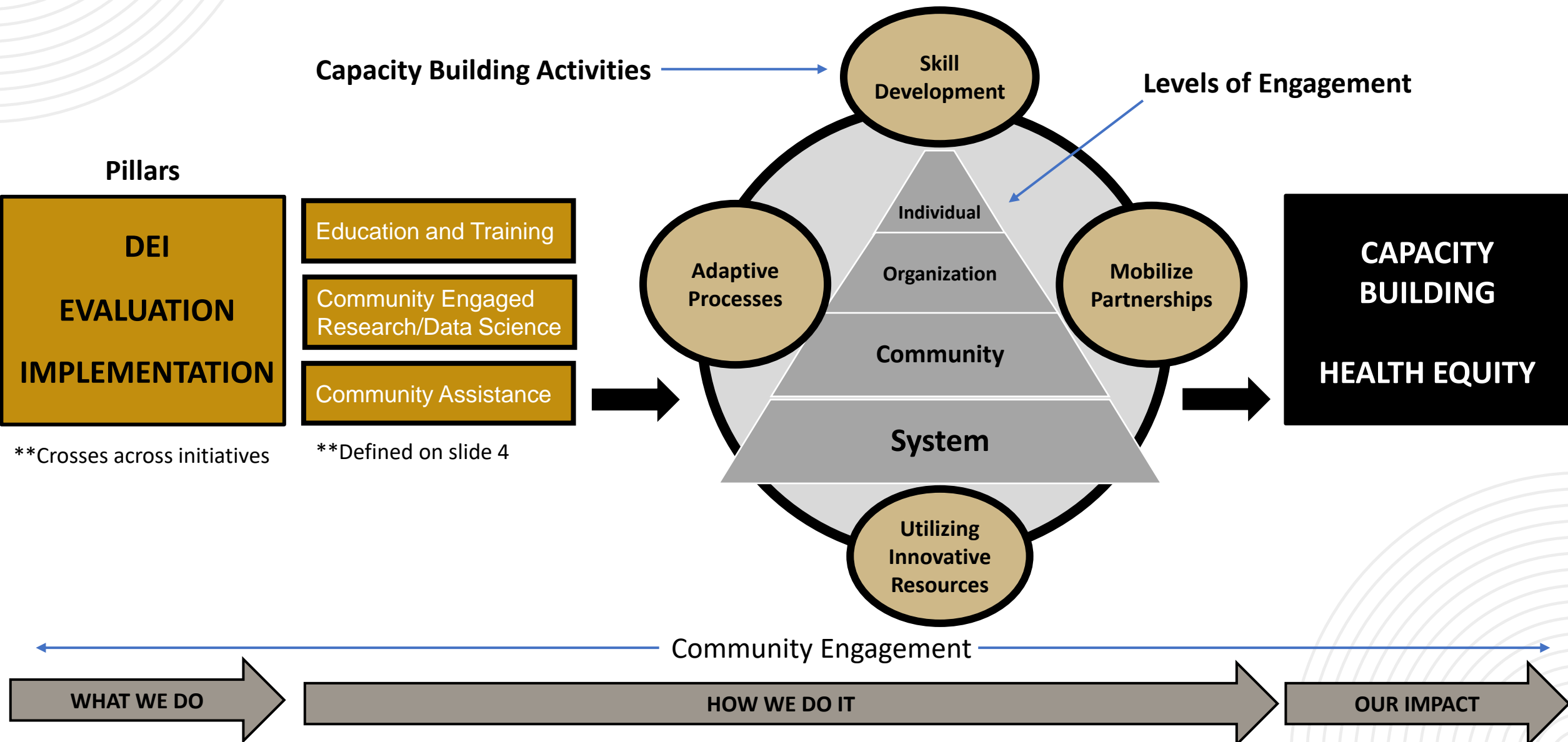


Focus Areas of Projects



Capacity Building

Transforming and strengthening individuals, communities, organizations and systems by providing skill development, mobilizing strategic partnerships, utilizing innovative resources, and adapting processes to maximize health impact.



Community Engaged Research Team Impact Table

Education and Training	Community Engaged Research & Data Science	Community Assistance
<p>Health Equity Trainings - HEA's provided free/low-cost training on Cultural Humility, Adverse Childhood Experiences (ACEs), Diversity, Equity, and Inclusion (DEI), and Health Equity at Franciscan Health, Wayne County Health Department Logansport Memorial Hospital, Indiana Department of Education, Norton Healthcare, Indiana Parks and Recreation Association (IPRA)</p> <p>Results:</p> <ul style="list-style-type: none"> • 89% of those trained indicated they learned something new • 89% of participants rated the topic of Bias as a 5/5 for great content • 78% indicated that they would likely apply concepts within the next 3 months • Franciscan Health & Wayne County Health Dept. have requested additional sessions-including strategy/implementation sessions; Logansport has requested ER and OB departments be trained 	<p>Mom's Movement of Merrillville – Worked in partnership with Brian Lamb School of Communication to reduce maternal and infant deaths through change in public attitude, creation of access to resources, and strategy implementation. CANI and partners distribute resource information and support; piloting trained CHWs to liaison between moms and services.</p> <p>Results:</p> <ul style="list-style-type: none"> • 60% of participants found the resource guide to be extremely helpful (n=15) • 64% of participants found the prenatal care resource to be extremely helpful (n=14) 	<p>Lake County Learns – To increase Hammond School District student enrollment into 21st Century Scholars, Purdue assisted in distributing 830 applications with messaging promoting free tuition. Purdue advocated for auto-enrollment to politicians.</p> <p>Results:</p> <ul style="list-style-type: none"> • Applications returned from minority students increased 5x from baseline • Qualitative survey demonstrated a perceived decreased burden on school counselors following auto-enrollment • Website created to educate Counties on current 21st Century information and promotion
<p>Clinton County Learning Cohort – Subject Matter Experts provided trainings on grant writing, process improvement, ACEs, cultural humility, health communication, and cultural and linguistically appropriate services to the Clark & Clinton Cohort, including 47 unique participants across 4 counties, serving 18 community organizations</p> <p>Results:</p> <ul style="list-style-type: none"> • Average knowledge increased for each concept after training (Neutral/Agree -> Agree/Strongly Agree) (n=47). • Trainees Agreed-Strongly Agreed their network with other service providers strengthened because of the cohort. 	<p>Allen County Suicide Data Analysis – Partnership with Allen County's Stop Suicide Coalition to clean analyze raw data on suicide death data from the coroner; IDOH (Allen County); depression, ideation, and suicide attempt data from the Youth Risk Behavior Survey; and Indiana Youth Survey from IU Prevention Insights.</p> <p>Results:</p> <ul style="list-style-type: none"> • Created pivot tables, graphs, and summaries of both ideation and attempt data that will be presented to the Stop Suicide Coalition in December of 2023. • Results will provide direction for coalition initiatives. 	<p>Seed Funding – Seed funding provided to grow roots and increase resources in under-resourced communities among 11 counties.</p> <p>Results:</p> <ul style="list-style-type: none"> • 17 requests totaling \$111,104 have been funded in the areas of: <ul style="list-style-type: none"> • Mental Health (41%) • Substance Use (18%) • Emerging Issues (17%) • Infant & Maternal Mortality (12%) • Food Insecurity (6%)
<p>Evidence-based Communication Tool - HEAs developed culturally & linguistically appropriate education using about safe sleep and youth mental health in Haitian-Creole, Spanish, and English at Logansport Memorial Hospital during discharge and doula home visits and youth mental health during Wayne County Future Achievers youth visits.</p> <p>Results:</p> <ul style="list-style-type: none"> • 6 culturally appropriate education products developed (4 	<p>Innovative Tools – Bridges utilizes AI technology to inform decision making on clinical and social patient care by collecting data on social drivers of health in conjunction with clinical data.</p> <p>Results:</p> <ul style="list-style-type: none"> • Purdue will support data collection, promotion, and 	<p>Evaluation – Purdue is assisting IDOH in evaluating the impact of I-HOPE across Indiana and individual I-HOPE activities.</p> <p>Results:</p> <ul style="list-style-type: none"> • Summary of budget, qualitative analysis of

Cumulative Capacity Building Activities & Change Outcomes Over Time

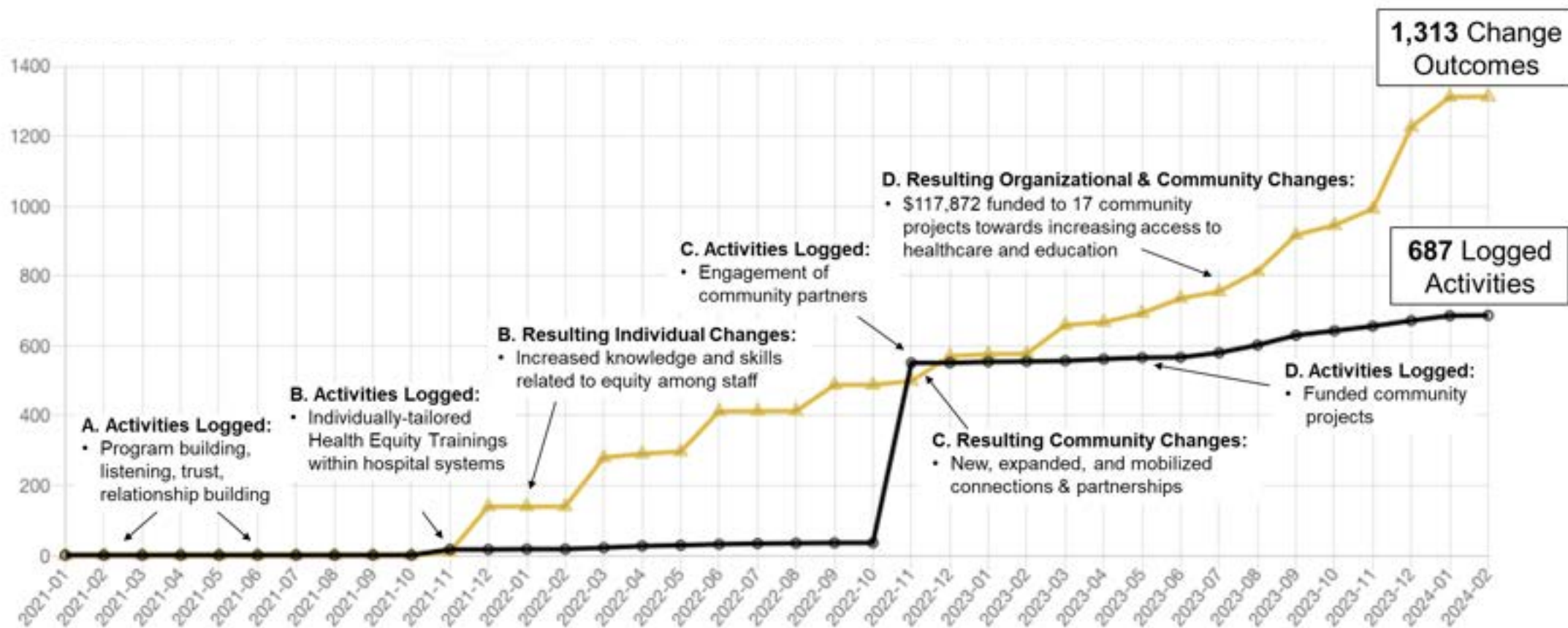
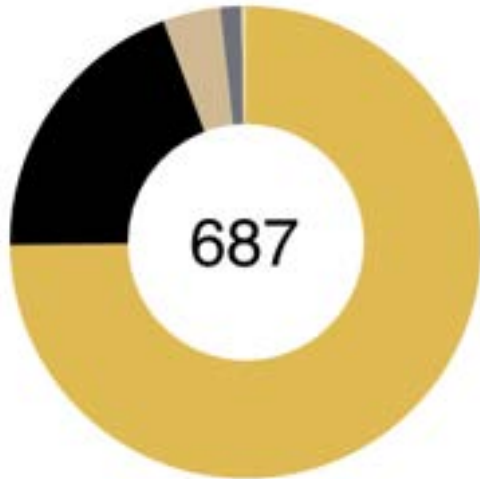


Figure 1. Community Change Graph on Cumulative Activities and Change Outcomes Over Time. Example activities and outcomes are linked with letters A, B, C, and D (no outcomes linked with activity A).

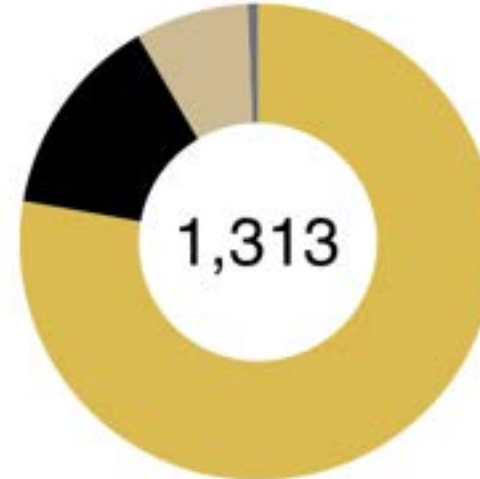
Capacity Building Activities & Change Outcomes Categorized by Type

Capacity Building Activities



Type	Total	%
Program Building	514	74.8
Service Provided	134	19.5
Resources Generated	27	3.9
Community Action	10	1.5
Other, Not Scored	2	0.3
Media Coverage	0	0.0
Planning Product	0	0.0

Change Outcomes



Type	Total	%
Community Change	1,021	77.8
Individual Change	182	13.9
Organizational Change	101	7.7
Systems Change	9	0.7
	0	0.0

DR. FRANCIS S. COLLINS

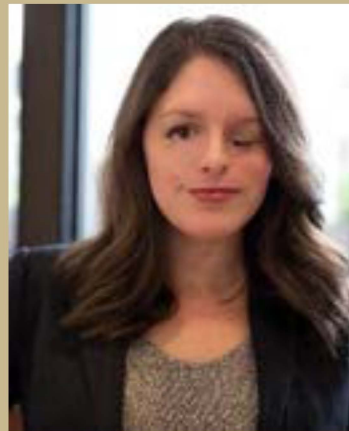
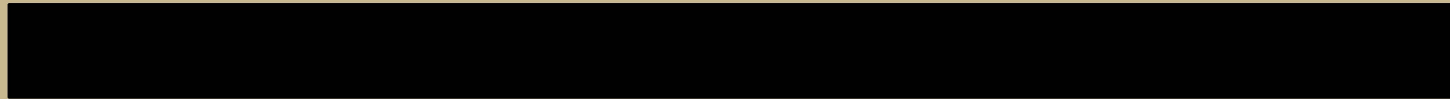
Fireside Chat: Fostering Health Equity Through Innovative Biomedical Research



10-Minute Break

Panel: Fostering Health Equity Through Innovative Biomedical Research

Dr. Sarah Wiehe, Dr. Natalia Rodriguez, Dr. Sylk Sotto, Mary Wachira

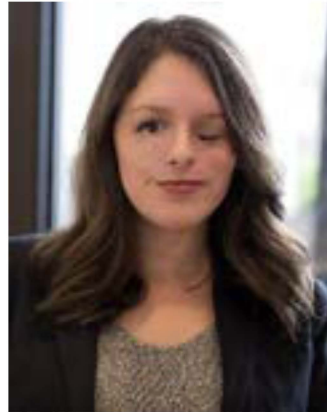


Ongoing Health Equity Research for Positive Transformations

Health Equity Summit
February 29, 2024



Panelists



Natalia Rodriguez, PhD, MPH
PURDUE UNIVERSITY
Assistant Professor of Public
Health and Biomedical
Engineering
Founding Director, Health
TechQuity Lab
2023 NIH Director's New
Innovator Award




Sylk Sotto, EdD, MPS, MBA
INDIANA SCHOOL
Vice-chair for Faculty Affairs
and Professional Development
Vice-chair for Diversity, Health
Equity, & Inclusion, Department
of Medicine
INDIANA CTSI
Chief Diversity Officer
Director of All IN for Health



Mary Mumbi Wachira, MGA
UNIVERSITY OF NOTRE
DAME
Program Director, Health
Equity Data Lab, Lucy
Family Institute for Data &
Society



The Indiana CTSI mission & leadership



We bring together
Indiana's brightest
minds to solve the
state's most pressing
health challenges.

Co-Directors



Sarah Wiehe, MD, MPH
Sharon Moe, MD

Deputy Directors



Scott Denne, MD
Indianapolis



Bill Hetrick, PhD
Bloomington




Melanie DeFord, MS
Notre Dame



George Wodicka, PhD
Purdue



The Indiana CTSI Purdue University Navigators



We bring together
Indiana's brightest
minds to solve the
state's most pressing
health challenges.

Purdue Navigators



Natasha Nikolaidis, MS
Operations Associate Director,
Bindley Bioscience Center



Tommy Sors, PhD
Director, Scientific Strategy
and Relations, Purdue Institute
of Inflammation, Immunology
and Infectious Disease



Clinical and Translational Sciences Award National Goals



Support Innovations that Speed the Development of Medicine



Promote Partnerships & Collaborations



Resource for Rapid Response of Public Health Needs



Nurture the Field of Translational Science



Training & Career Development



Address Health Disparities



The goal of both the Indiana CTSI and the other CTSA is to provide infrastructure for translational research and national connectivity to promote program impact.



Our Vision

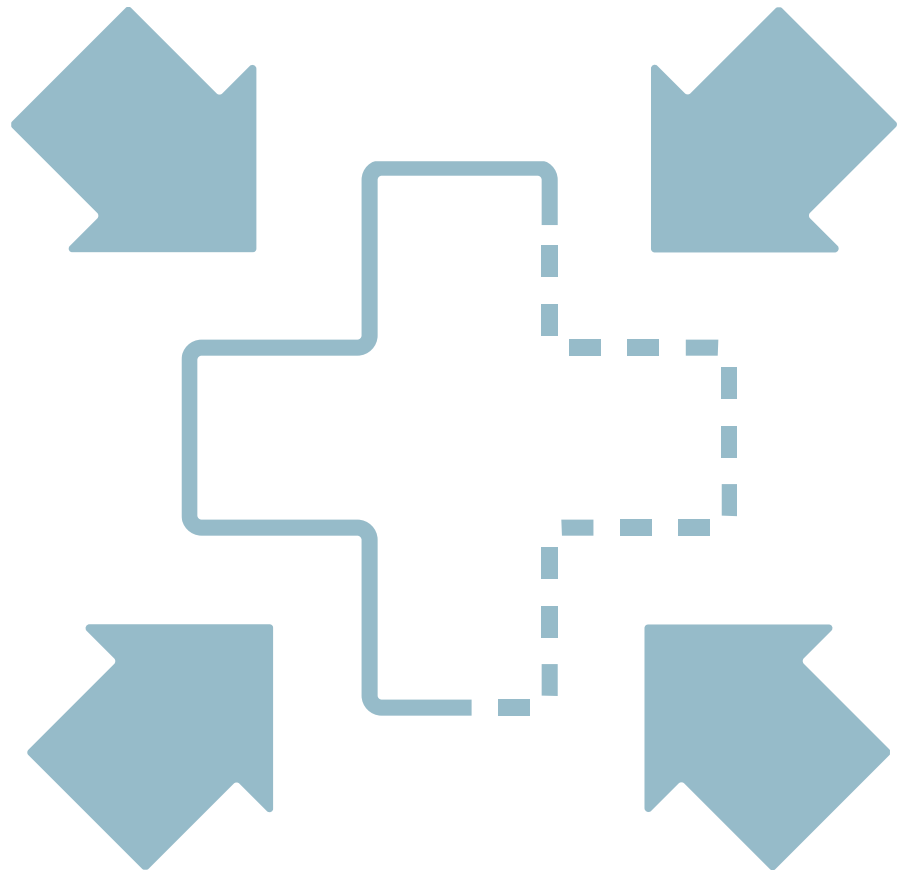


In 2030, at the end of this seven-year renewal funding period, we envision Indiana CTSI will transform our statewide research ecosystem with deliberate attention to diversity and inclusion in our partnerships, workforce development, and research engagement.

We will accelerate innovation and rapidly implement evidence into practice in order to advance health equity.



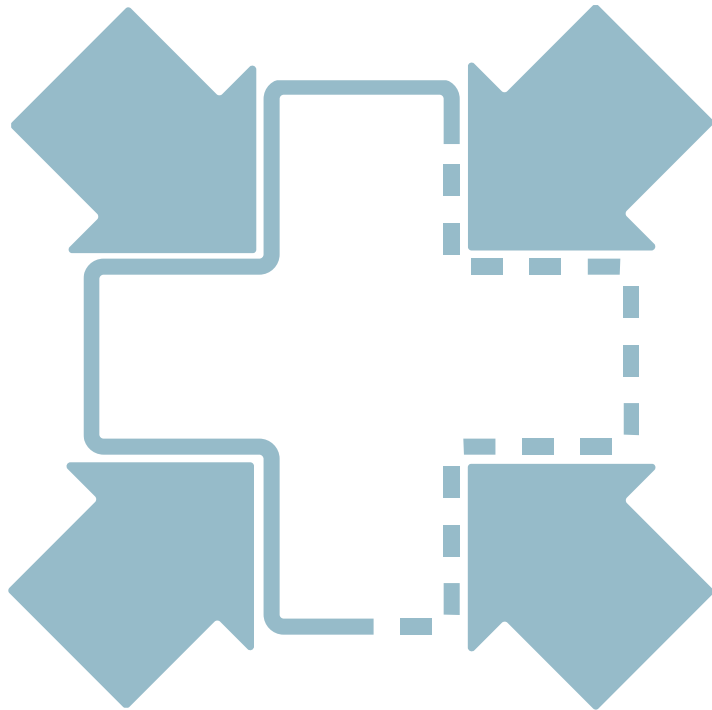
In order to advance health equity...



The Indiana CTSI
listens, engages with,
and
CONVENES
researchers, our
partners and
stakeholders with lived
experience, ...



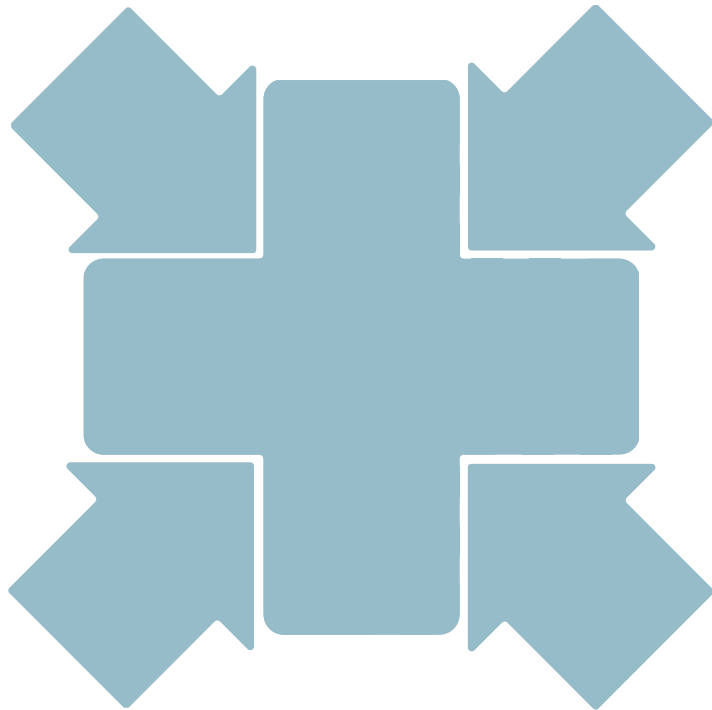
In order to advance health equity...



... **COORDINATES** to
address the prioritized
needs of the
community, ...



In order to advance health equity...



...and **CATALYZES**
collaborative activity
through *resources, pilot
funding and, most
importantly, our people* to
offer bi-directional value
and health impact in
communities we seek to
serve.



Our Process



NAVIGATORS



Navigators at each campus serve as initial point of contact for faculty, connecting investigators to CTSI collaborators & resources across campuses.

PILLARS

Project Success & Services

Workforce Development

Community Engagement

Informatics

Clinical Research

INITIATIVES

DEI

MONON EXPANSION

Indiana CTSI resources, pilot funding and expertise are here for you – **YOUR SUCCESS IS OUR SUCCESS!**



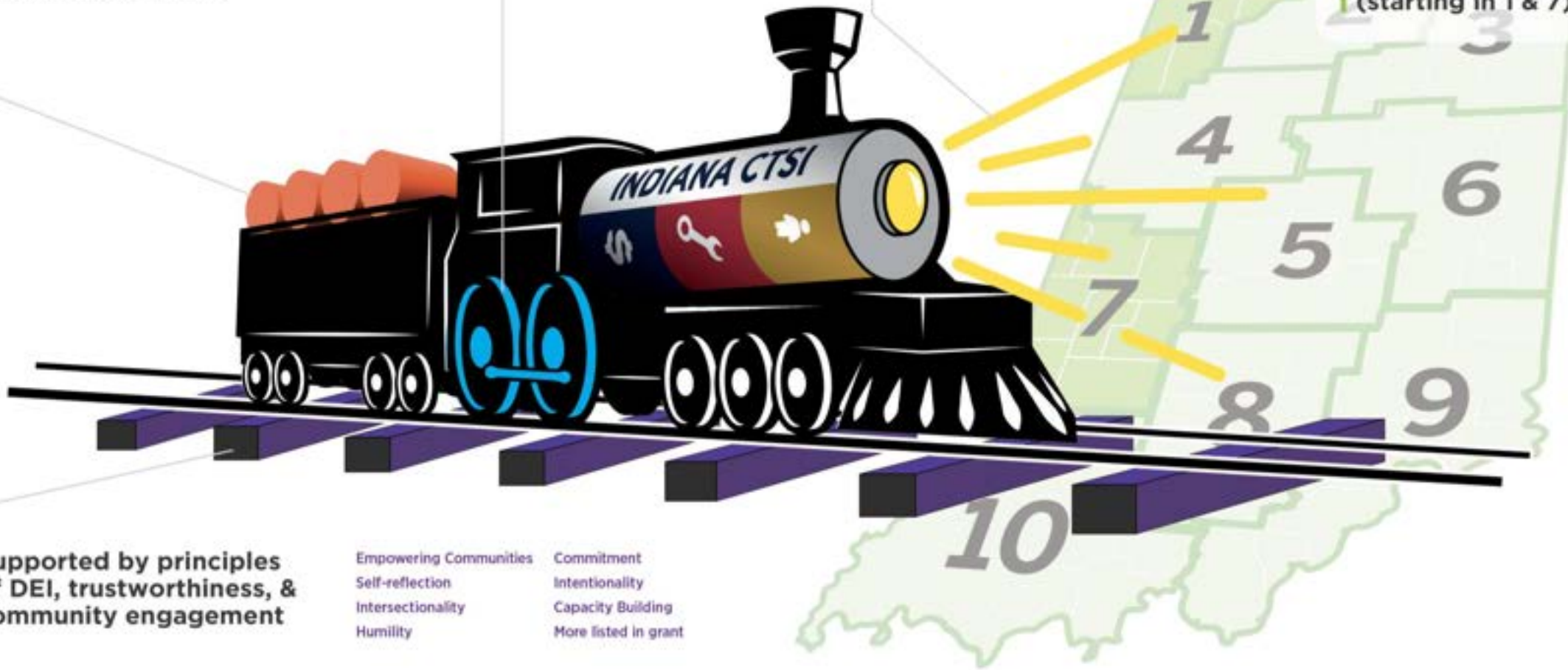
The Monon Expansion

Delivers workforce development, community engagement, clinical research, & health informatics

Driven by statewide partnerships

Identify & clear barriers to translational science

Advance health equity region by region over the next seven years. (starting in 1 & 7)



Supported by principles of DEI, trustworthiness, & community engagement

- Empowering Communities
- Self-reflection
- Intersectionality
- Humility
- Commitment
- Intentionality
- Capacity Building
- More listed in grant



Your success is our success!

Please reach out if we can help.

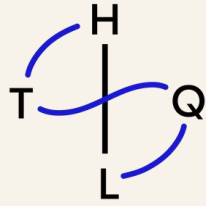
ictsi@indianactsi.org



Participatory Innovation: A Road to Health Equity

Natalia Rodriguez, PhD, MPH






Health
TechQuity
Lab



**Human-Centered
Design of Health
Technologies**



**Community-engaged
Translational Science**



**Human Papillomavirus (HPV) Rapid Test for Cervical
Cancer Screening**



Early Detection of HIV



**Smartphone-Based Self-Test for HIV Viral Load
Monitoring**

1. Without meaningful engagement, even the most innovative technologies will fall through the gap...



1. Without meaningful engagement, even the most innovative technologies will fall through the gap...

A rapid HPV test for cervical cancer screening:



- ✓Independent of laboratory infrastructure
- ✓Sample to result in < 1 hour

Lab on a Chip

PAPER
View Article Online
View Journal | View Issue

Cite this: *Lab Chip*, 2016, 16, 753

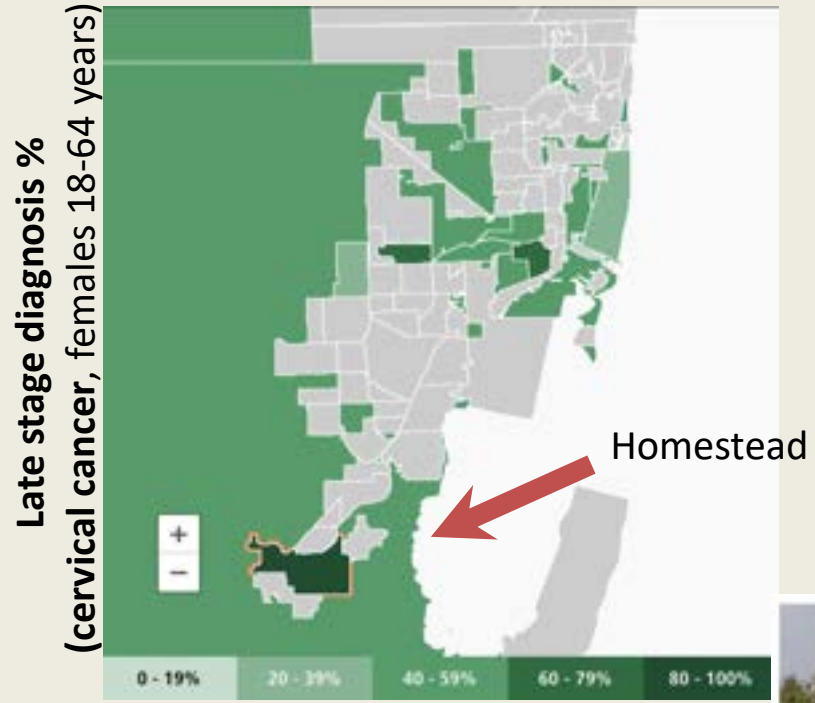
A fully integrated paperfluidic molecular diagnostic chip for the extraction, amplification, and detection of nucleic acids from clinical samples†

Natalia M. Rodriguez,^a Winnie S. Wong,^a Lena Liu,^a Rajan Dewar^{b,c} and Catherine M. Klapperich^{a*}

The image shows a paperfluidic diagnostic chip, which is a small, rectangular, white paper-based device. It has a central circular blue component and a horizontal strip with a pink band. The device is shown against a dark background.

2. All I know, I learned from the (farmworker) community...

Miami-Dade County



HPV Self-sampling



Migrants work the green-bean fields in Homestead. C.M. GUERRERO / MIAMI HERALD FILE

3. Authentic engagement isn't easy... but it is necessary.

Homelessness during COVID-19



TRAILBLAZER AWARD

4. If you build it, they will come...

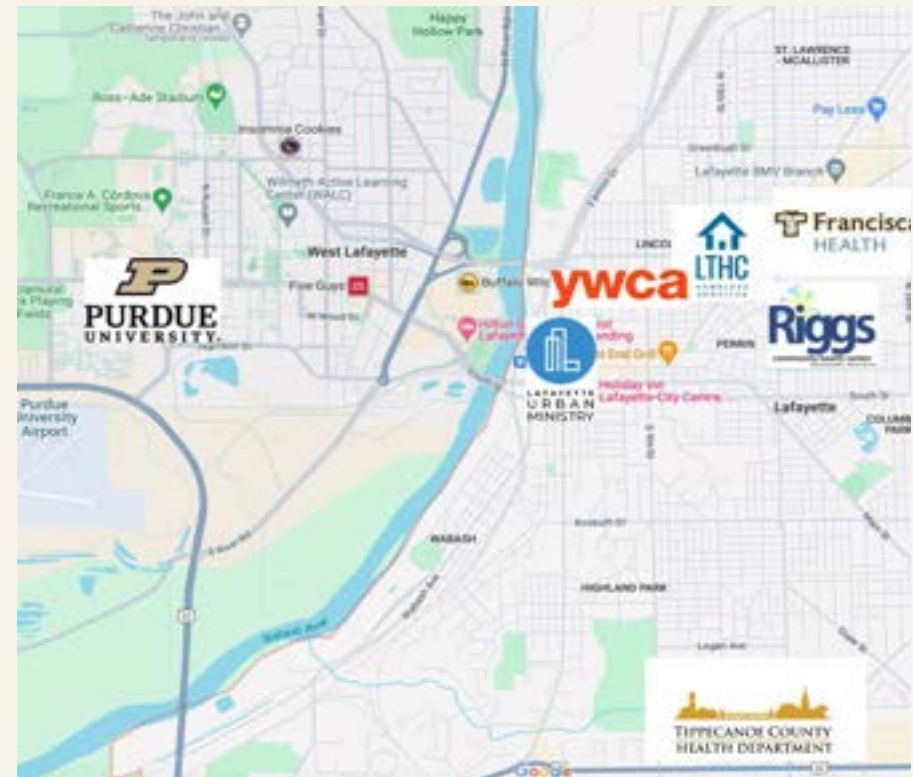
Homeless Health and Wellness Committee

In 2020, we established **HAWC**, a multisectoral **community-academic partnership** working to address homelessness and health disparities:

- LTHC Homeless Services
- Tippecanoe County Health Department
- Franciscan Health
- Purdue University:
Public Health, Nursing, Pharmacy,
Nutrition & Hospitality



For the past 4 years, HAWC has met weekly to align efforts, co-lead **community-based participatory research**, and help address the diverse health needs of the community.



5. If you build it, funding will come...



NIH Rapid Acceleration of Diagnostics – Underserved Populations



Pandemic Response and Infectious Disease Preparedness in Homeless Shelters



Addressing Cervical Cancer Disparities Among People Experiencing Homelessness

6. Interdisciplinarity is essential.

Cervical cancer incidence and mortality rates among people experiencing homelessness are up to 4x higher than national averages.

To address this disparity:



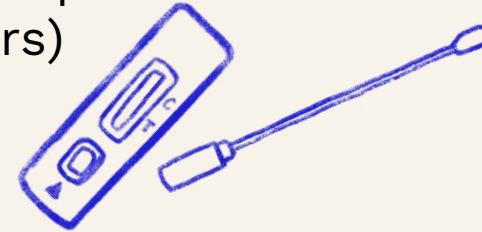
1. Understand cervical cancer screening practices, experiences, and barriers.



2. Design interventions to increase knowledge and awareness.
(CHW outreach, education, navigation)

3. Implement and assess innovations to increase uptake of screening.
(HPV self-sampling and rapid testing in shelters)

4. Ensure linkage to follow-up care.



5. Leverage what works as a model for preventive healthcare delivery.



Public Health

Anthropology

Nursing

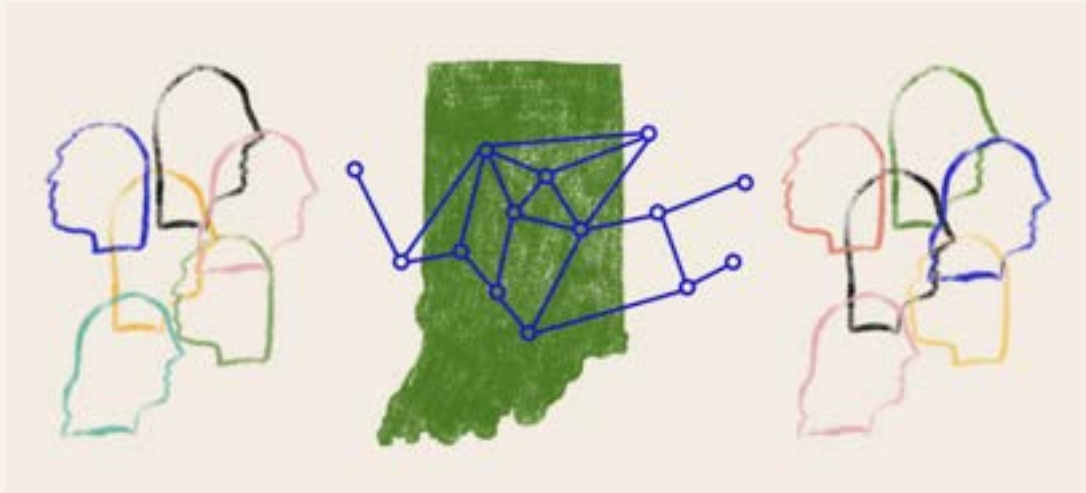
Pharmacy

Biomedical ENG

Lab Sciences

Clinical Medicine

7. True partnership enables scale-up and broader impact.



Expanding to Indianapolis partners:

- Coalitions (CHIP)
- Homeless shelters
- Social service orgs
- Clinics/FQHCs
- Academic partners



Thank you!

natalia@purdue.edu





IU stands on the historic homelands of the Miami people, the Potawatomi people, the Shawnee people, and many other tribes who were forced through these lands. We also recognized that IUPUI displaced a vibrant Black community in Indianapolis.



Director, All IN for Health
Chief Diversity Officer

"Do they REALLY Trust Us?": Lessons from a Volunteer Research Registry

Dr. Sylk Sotto

Vice Chair for Faculty Affairs and Professional Development
Vice Chair for Diversity, Health Equity, and Inclusion
Associate Professor of Medicine (T)
Department of Medicine

@drssotto

Pubs: Sotto Santiago, S.



Indiana Clinical and Translational Sciences Institute

All IN for Health Update

Sylk Sotto, Director

Gina Claxton, Engagement Manager

Brenda Hudson, Recruitment Manager

Lynsey Delp, Digital Engagement Specialist

2/29/24



Join All IN!





What is All IN for Health?

- An initiative of the Indiana Clinical and Translational Sciences Institute (CTSI).
- Mission is to **engage the public in understanding the role and value of research toward improving the health** of Indiana residents.
- Indiana is home to thousands of health research projects through Indiana University, **Purdue University** and the University of Notre Dame. However, only a small fraction of Indiana residents report being involved or knowing someone who has been involved in a research study.





What is All IN for Health?



Voice

Opportunity for public voices to share their research priorities



Hear about

Hear about health research studies by 5 institutions



Receive

Receive health research information and findings



Connect

Connect to health research resources





All IN for Health for RESEARCHERS?



Promote research opportunities

Social media ads
Newsletters
Website blog/resources
Study listings
Research volunteer network



Gain public perspective on the research plan

Advisory Board review
In-person events
Digital platforms



Community engagement consultation and referrals

Expertise of larger community and university-based Indiana CTSI network

All IN for Health

- Online engagement platform for Hoosiers to promote health and research literacy.
 - Volunteer registry of ~15,000 individuals representing all 92 counties, allowing for tailored recruitment by specific characteristics
 - >30,000 people who are part of an online community
 - Utilizes website, blog, e-newsletter, and multiple social media channels
 - Paid social media promotion available
 - Public-facing study page: research team-owned web page with detailed study info, allowing participants (with or without a volunteer profile) to self-select research opportunities



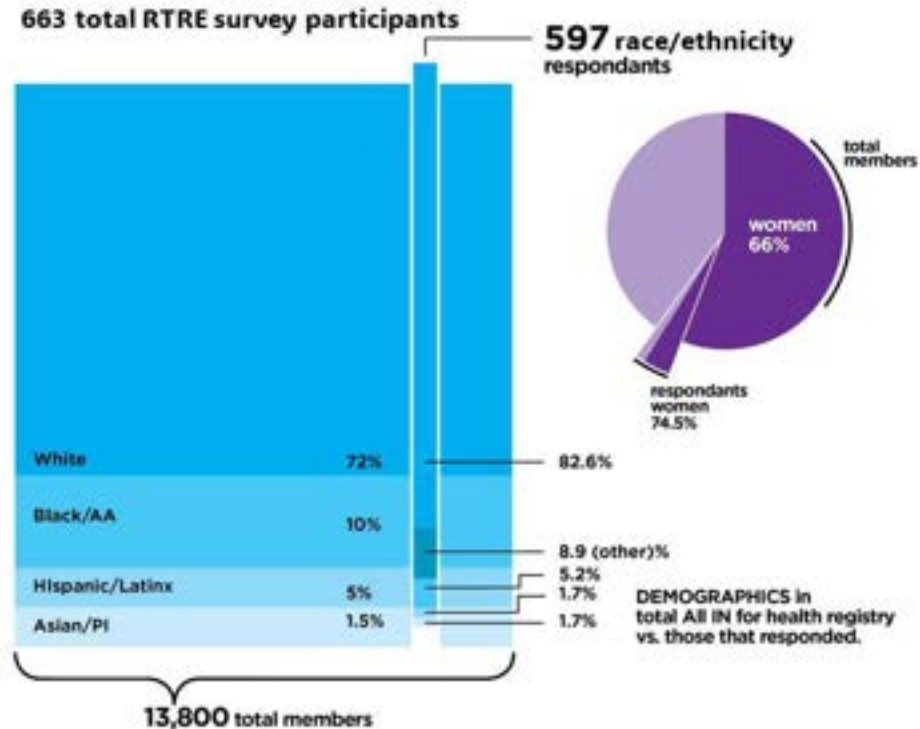


This Photo by Unknown Author is licensed under [CC BY-NC-ND](#)



All IN for Health

Relationship of Trust and Research Engagement Survey

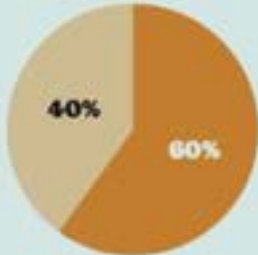


"Do they REALLY Trust Us?": Lessons from a Volunteer Research Registry"

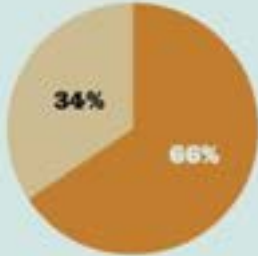
- 50% disagree that patients get the same medical treatment regardless of race and/or ethnicity.
- 67% percent think it is safe to participate in medical research, yet 79% had never been asked to participate in medical research by their doctor.
- 30% think that medical researchers act differently toward minority participants.
- 10% believe that medical researchers select minorities for their most dangerous studies and some medical research projects are secretly designed to expose minoritized groups to diseases.

Historically marginalized groups in biomedical research

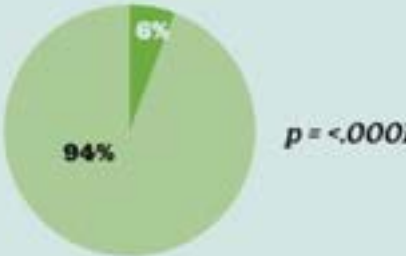
It's safe to be in a medical research study



Most medical researchers would not lie to people to try to convince them to participant in a research study



Some medical research projects are secretly designed to expose minority groups to diseases



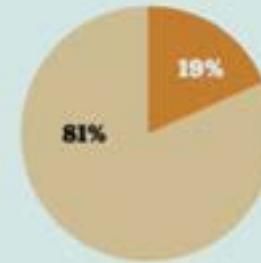
Historically Marginalized Respondents



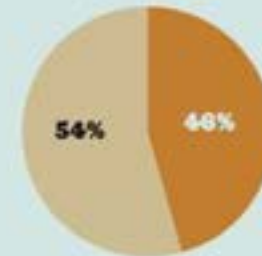
White Respondents

Historically marginalized groups in biomedical research

To get people to take part in a study, medical researchers usually do not explain all of the dangers about participation



Medical researchers act differently toward minority participants than toward white participants



Patients get the same medical treatment from healthcare organizations, no matter what the patient's race or ethnicity



Historically Marginalized Respondents



White Respondents

Lessons

- Historically marginalized participants are **willing to participate, we are just not asking through additional networks**
- We need to **speak against misinformation and disinformation**
- We need to be more **transparent** as to why we are recruiting participants from historically marginalized groups and be **explicit** in recruitment materials
- We **need researchers and health systems** to partner in recruitment at community events, and in marketing materials.
- Endorse and support **health equity, trust, and trustworthiness professional and skill development** for researchers and research staff.
- Work with researchers on **dissemination** of results to the public.



All IN for Health

Dr. Sylk Sotto

Director, All IN for Health
Chief Diversity Officer
Indiana CTSI

Associate Professor of Medicine
Vice-chair for Diversity, Health Equity, and Inclusion
Vice-chair for Faculty Affairs and Professional
Development

Department of Medicine
Faculty Investigator, IU Center for Bioethics
Indiana University School of Medicine

Affiliate Faculty,
Health Equity Advancing through Learning health systems-Research
(HEAL-R) IU Health



Ssotto@iu.edu
Pubmed/Google Scholar: Sotto-Santiago, S.
LinkedIn: Sylk Sotto



Health Equity Research for Positive Transformations

Health Equity Data Lab
Presentation at the 3rd Annual Health Equity Summit

02/29/2024



Health Equity Data Lab

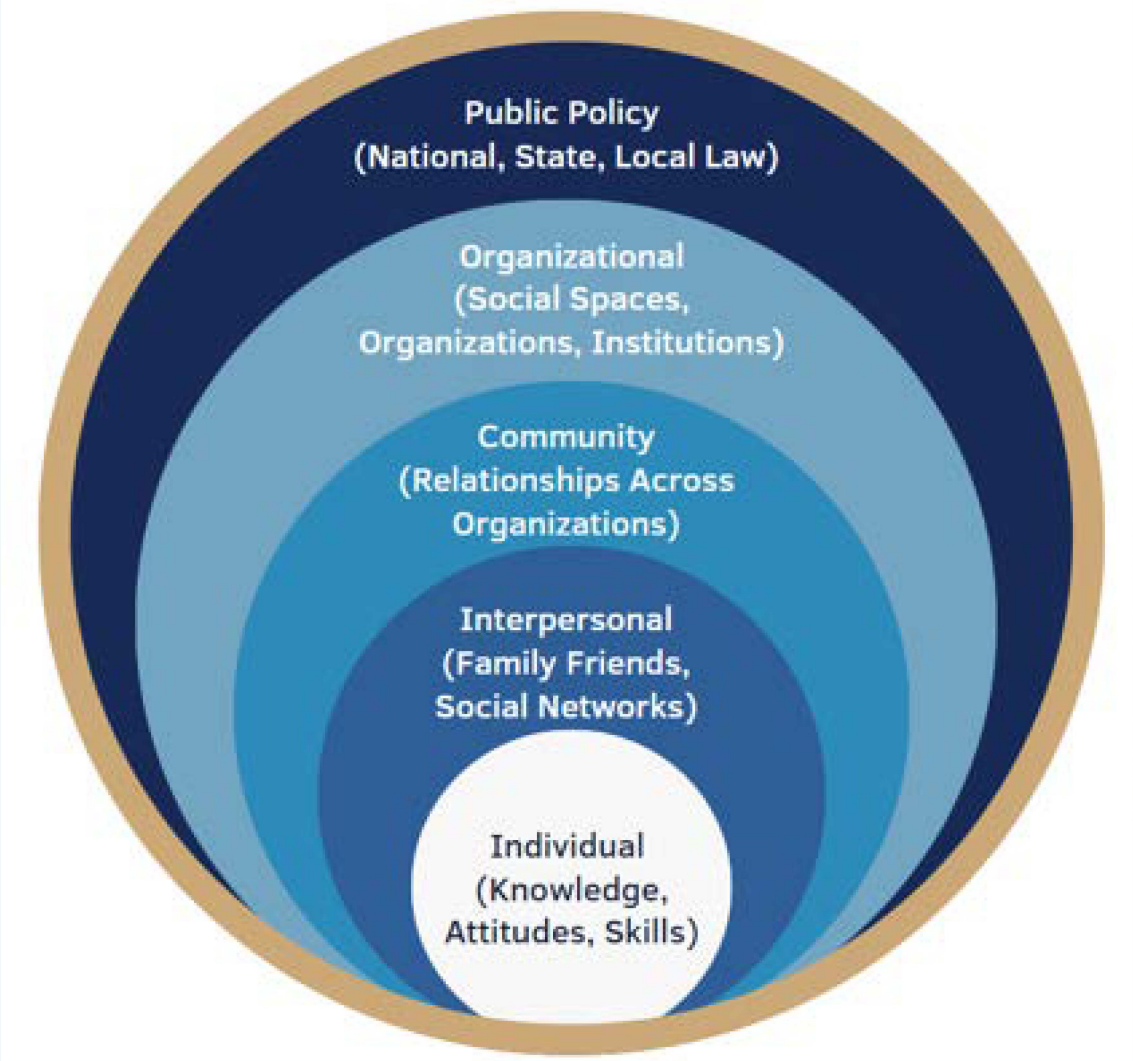
Vision

Become the pre-eminent convening center of discussions, problem scoping, and solutions on health equity data and responsible AI for health & wellbeing.

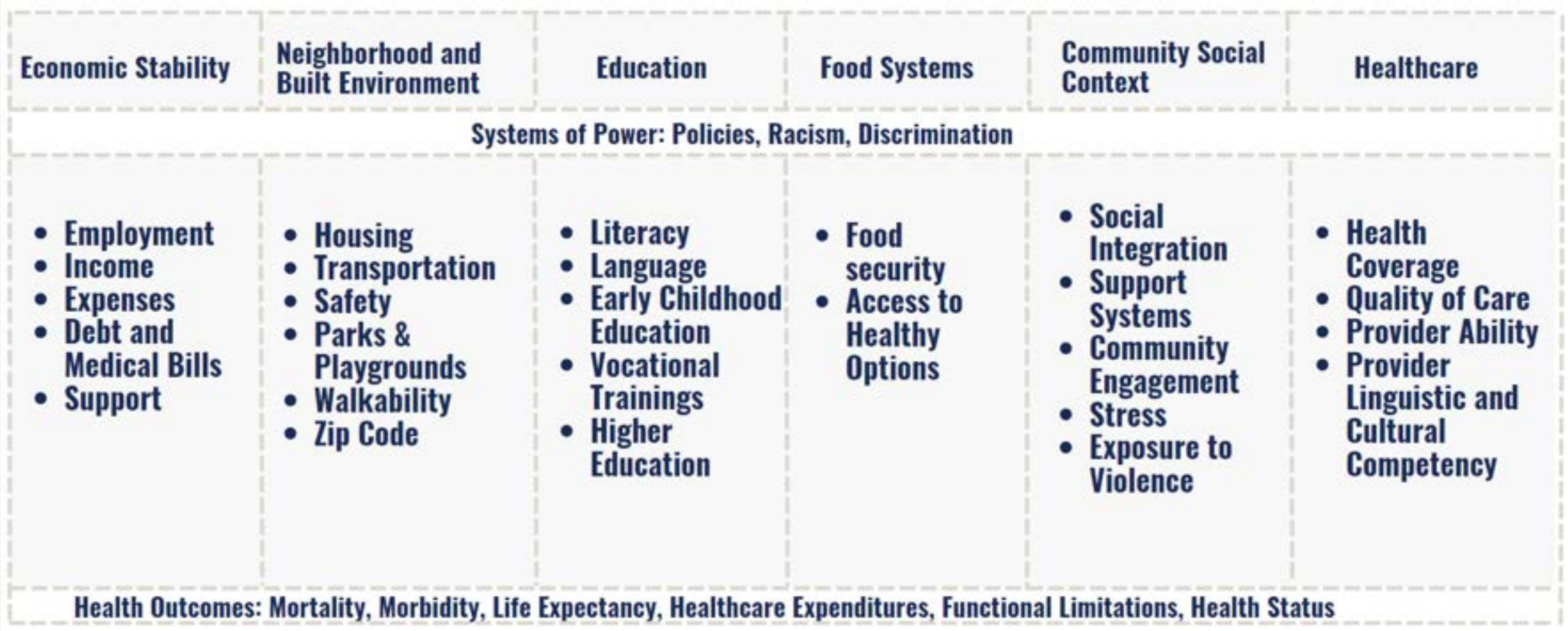
Mission

Advance interdisciplinary research and translation at the intersection of health equity and data science / AI, identified through a collaborative process.

HEDL Health Research Model



Health Research Lens: SDOH



Source: Kaiser Health Foundation

HEDL Pillars



Precision Social Determinants of Health (SDOH)



Health Equity Data Index



Beyond Human Resources (HR) - the Health and Well-Being of Communities



The Health Workforce of the Future/ Responsible AI

HEDL Pillars Focus

Precision SDOH

- Black Maternal Health
- Food as Medicine

Workforce of the Future

- Analysis of Gaps in the Current Workforce
- Improve Community Health Literacy
- Future of Healthcare Worker
- Responsible AI

Health Equity Index

- Definition of Health Equity
- Metrics That Derive the Index
- Pilot the Health Equity Index

Beyond HR

- Community Interventions for Employers

Ongoing HEDL Working Groups



Maternal Health Initiative



Food as Medicine



**Workforce of the Future /Responsible
AI**

Health Research Incubation



Indigenous Cancer Disparities: Multi-Modal Data Integration



Emergency Room Usage and Hospitalization Study



Bridging the Data Gap Between Parental Adversity and Infant Health Outcomes

Health Research Incubation



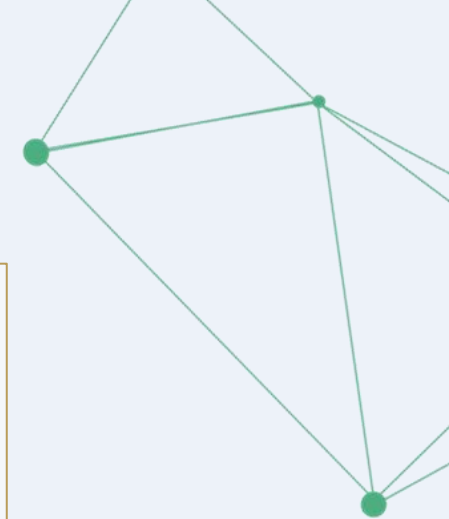
Housing - Health Equity Nexus: Better Housing as Health Risk Mediator (HOUSE4HEALTH)



Responsible use of Artificial Intelligence (AI) and Empowering the Workforce of the Future I



Responsible use of AI and Empowering the Workforce of the Future II



Health Research Incubation



From Data to Action: Reducing mortality from illicit drugs in South Bend, Indiana



How can Artificial Intelligence inform air quality and incentives for environmental justice



Rapid Personalized Image-Based Cardiovascular Flow Modelling using Bayesian Deep Learning



Questions?

Thank You.

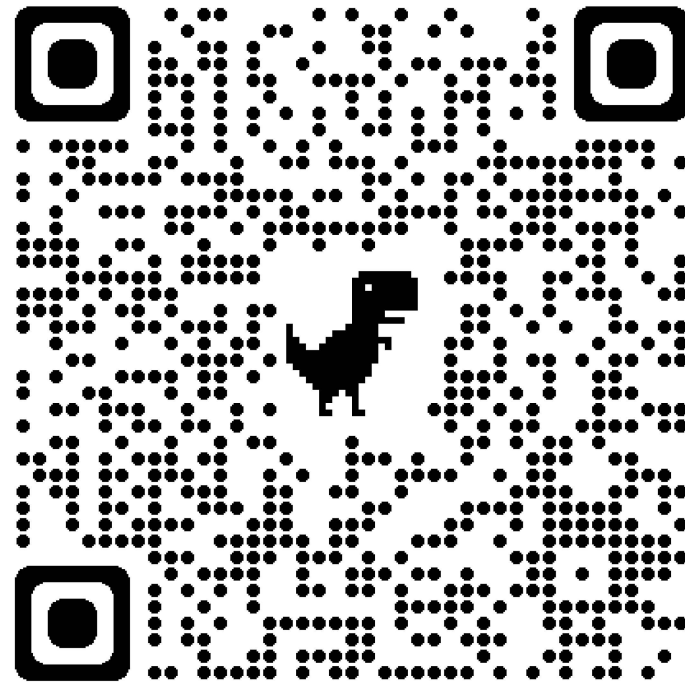
Lunch/Poster Session



Health Equity Initiatives



SCAN TO ACCESS POSTERS



JENNY HANSEN



**Purdue for Life Foundation, Office of
Foundation Relations**

Office of Foundation Relations

Purdue for Life Foundation

Jenny Hansen
Director of Foundation Relations



Relations



Foundation Relations

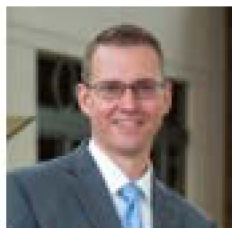
The Office of Foundation Relations has extensive experience working with foundations with a wide range of interests.

The OFR team specializes in:

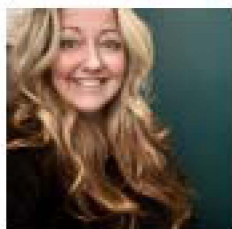
- Connecting foundations with the relevant faculty, staff, and programs.
- Assisting with development of proposals, gift agreements, and any other relevant documents.
- Overseeing reporting on gifts and grants.
- Organizing conference calls and campus visits for foundations with members of our campus community.
- Providing and reviewing valuable research information, networking opportunities, and data about our foundation partners, Purdue and our community.



Office of Foundation Relations

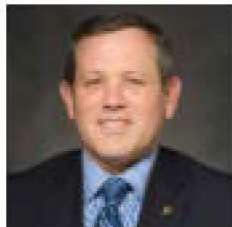


Drew Weintraut – Associate Vice President



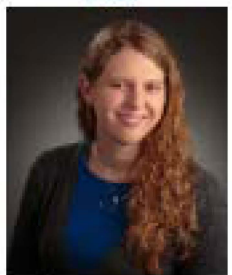
Laura Henzl – Senior Director

- Engineering
- Agriculture
- Vet Med
- Cancer Center



Jim Priest – Director

- HHS
- Science
- Pharmacy
- Nursing



Jenny Hansen – Director

- DIB Initiatives
- Purdue Polytechnic
- Krach Institute for Tech Diplomacy



Office of Foundation Relations



Alexandra Pflug – Director

- Liberal Arts
- Education
- Libraries
- Honors
- Daniels School of Business



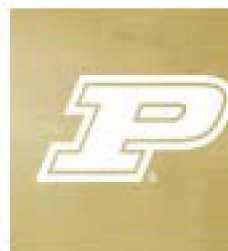
Stephanie Merrill – Director

- Discovery Park District



Kristen Noel – Director of Operations

- Lily Endowment Expert
- Proposal Development Specialist
- Project Management
- Stewardship
- RFP Management
- Communications/Proposal training



Ashlee Wright – Operations Coordinator

Working with the Office of Foundation Relations

We are here to help

- Choose your own adventure book of support
 - Support in aligning your work with the foundations' needs
 - Application support (writing, editing, reviewing, submitting)
- Managing relationships and contacts
- Insight into prior history between Purdue and the Foundation
- Streamlined communications – sometimes it is preferred, sometimes not
- Expand your bandwidth
- We do not replace SPS, they are still necessary





Jenny Hansen

Director of Foundation Relations
Office of Foundation Relations
JM Hansen@purdueforlife.org



tions

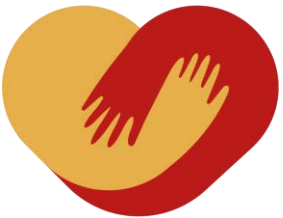


Panel: Rural Health Equity – Celebrating Hepatitis C Successes & Exploring Opportunities with Indiana Leaders

Dr. Daniel Rusyniak & Deb Nichols



Indiana Hepatitis C Resources



**CONNECT
TO CURE**.ORG



Subscribe to the IDOH
Viral Hepatitis Newsletter



INDIANA UNIVERSITY
INDIANAPOLIS
ECHO CENTER

For more
information, or to
register, visit:
fsph.iupui.edu/echo



Scan here
to learn
more &
register.



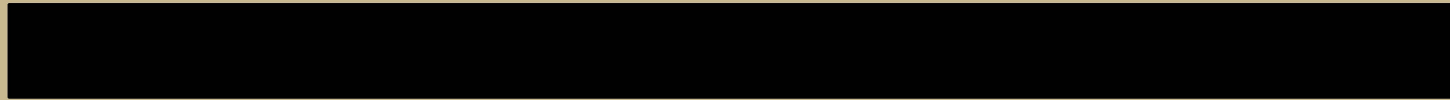
ZERO
is Possible

Bringing together the essential people, tools, and resources
to end the HIV epidemic and eliminate Hepatitis C in Indiana



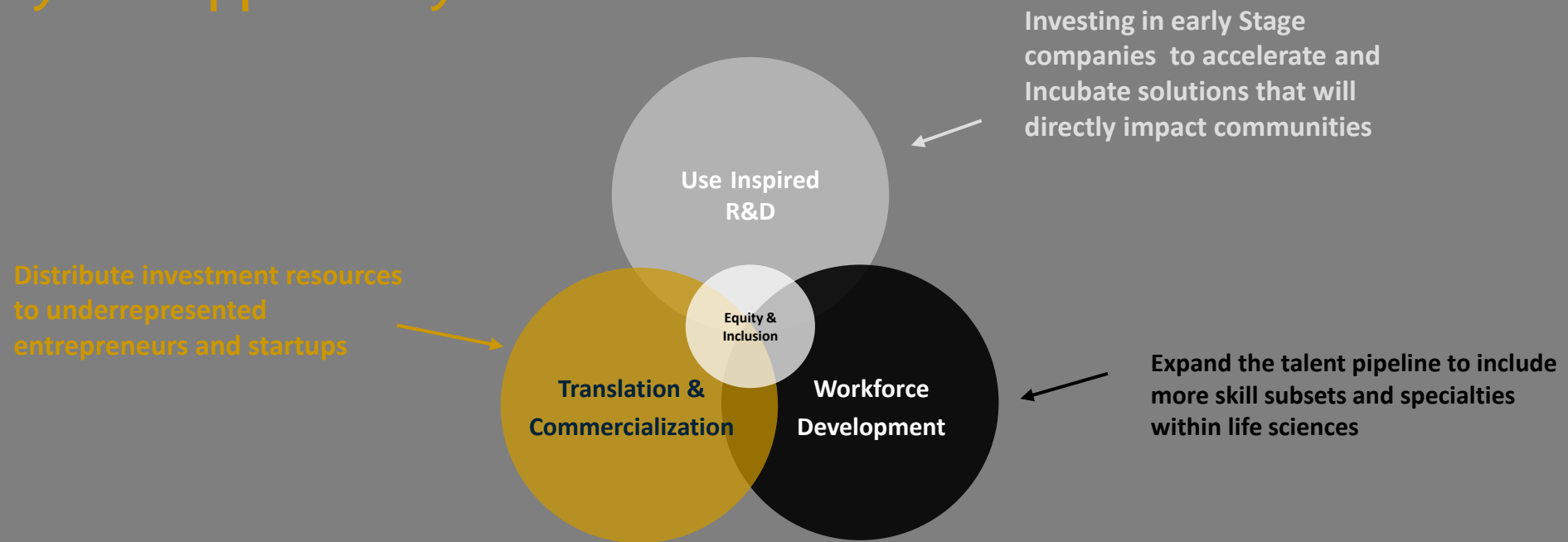
Panel: Revolutionizing Health Equity Through Community-Engaged Research

Dr. Leslie Amonoo, Kier Crites Muller, Victor Garcia,
Lynn Herr, Stephanie Long



Millennial Beacon Chicago

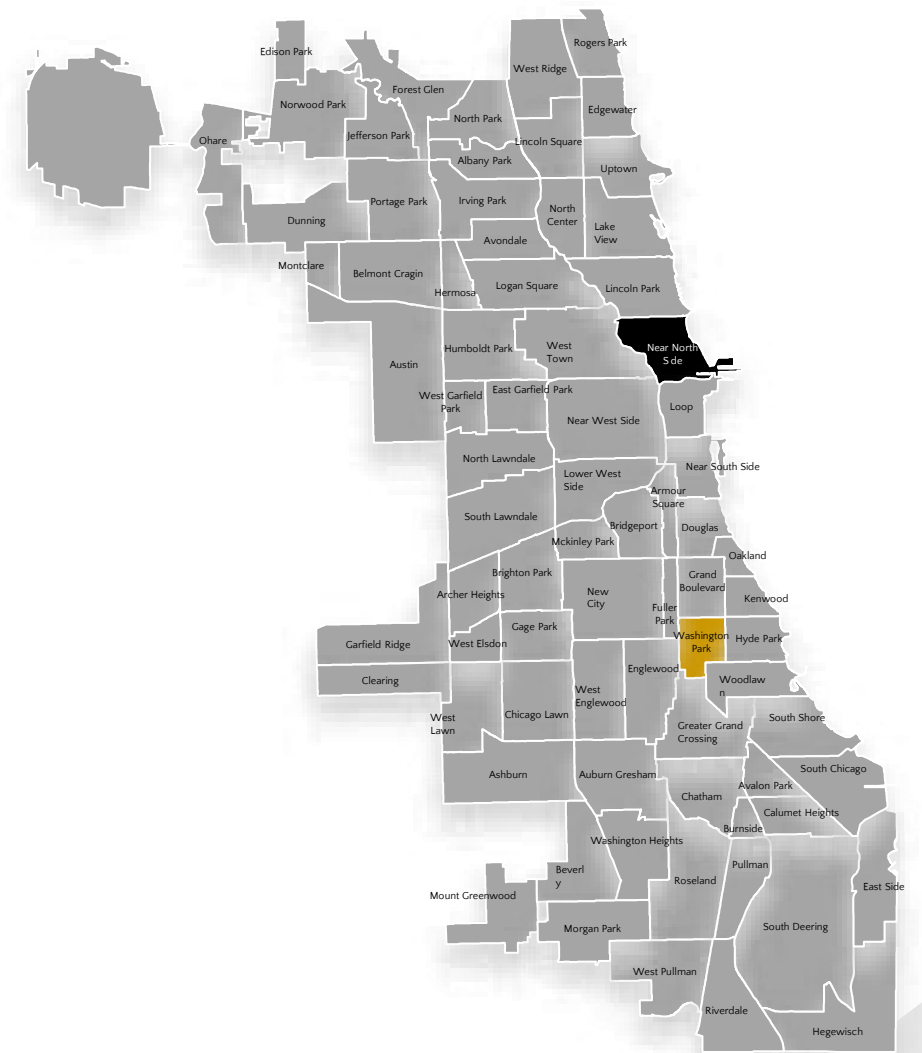
The Mission: Foster a South Side ecosystem – a life science engine that eliminates tragic health disparities while revitalizing community through prosperity and opportunity



Health Disparities in Chicago

Achieving health equity requires targeted and dedicated resources toward developing solutions

	Near North Side	Washington Park
DEATH RATE PER 100,000 POPULATION		
Heart Disease	131.6	296.5
Cancer	143.6	290.2
Diabetes	8.2	53
Stroke	28.5	53.4
COVID-19	23.3	129.2
YEARS		
Life Expectancy	81.1	69



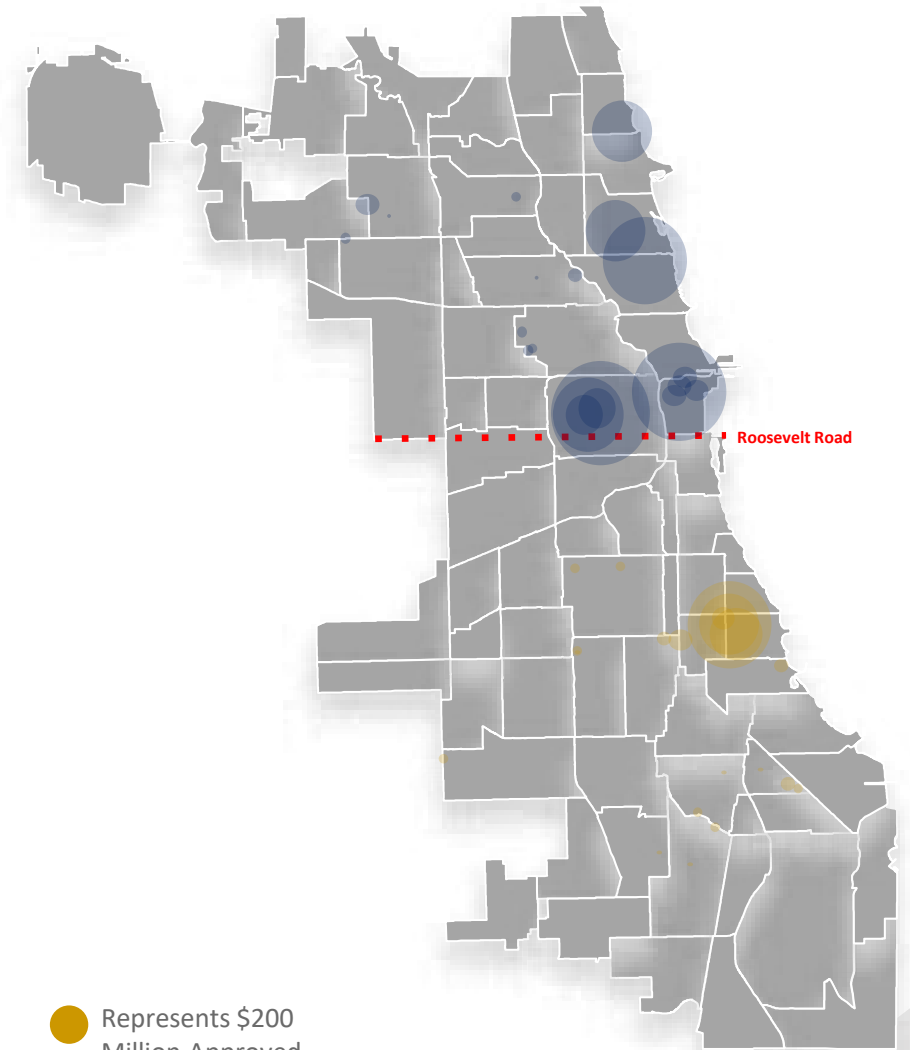
Source: Chicago Health Atlas Healthy Chicago 2.0.

Healthcare Investment Disparities

Chicago's South Side has endured significant disparities in healthcare investment when compared to the North Side

Total Certificate of Need (CON) Approved Permits for New Construction CON Applications Filed for Chicago, 2012-2018

Area of Chicago	Permit Amount	Percent of Total
North of Roosevelt	\$1.87 billion	76%
South of Roosevelt	0.60 Billion	24%
Total	2.47 Billion	100%



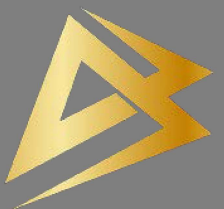
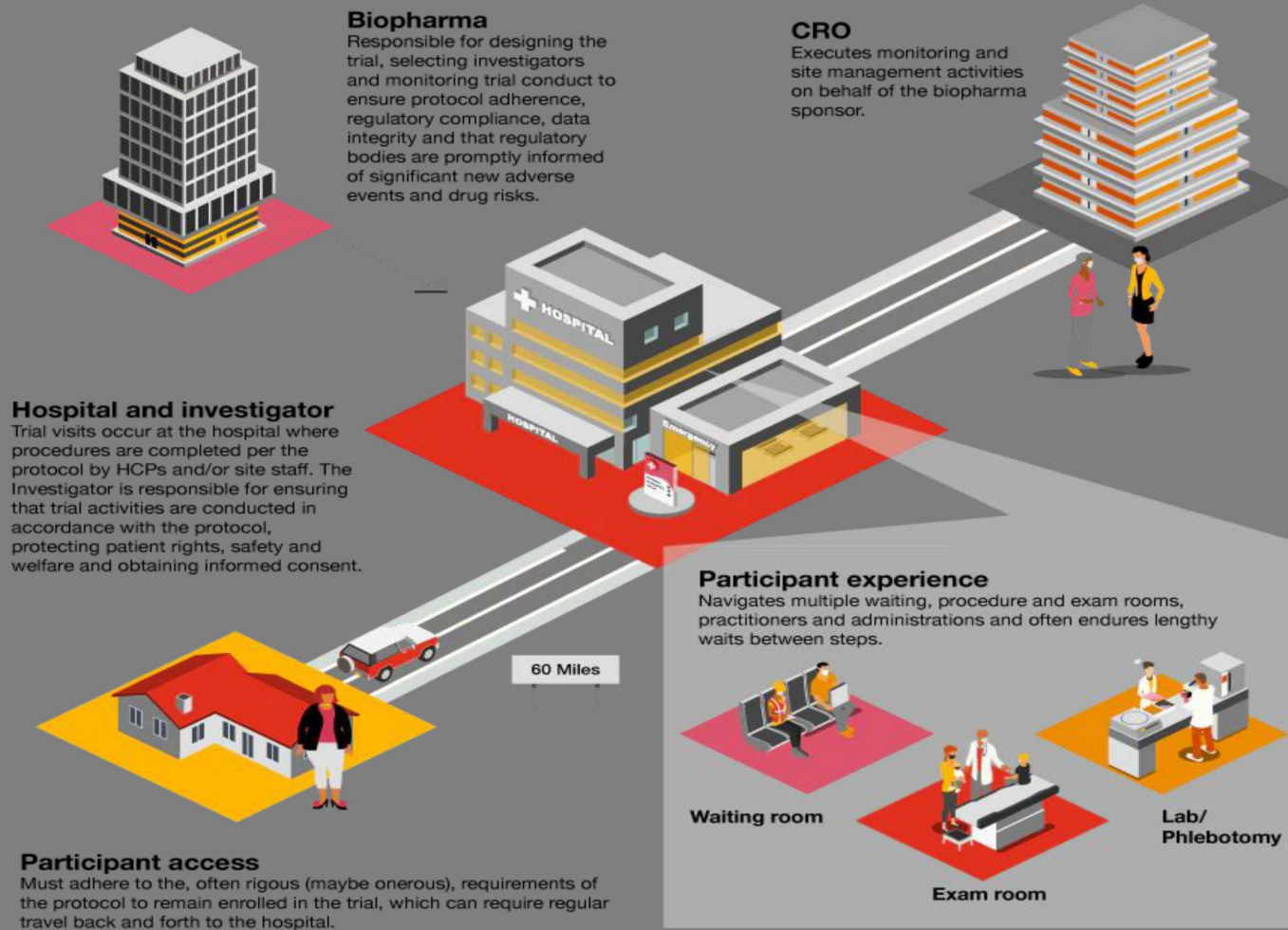
● Represents \$200 Million Approved North of Roosevelt

● Represents \$200 Million Approved South of Roosevelt

Source: https://www2.illinois.gov/hfs/Documents/South%20Side%20Healthy%20Community%20Organization_Application.pdf

How we do Clinical Trials

Current State: All activities are centered around the hospital



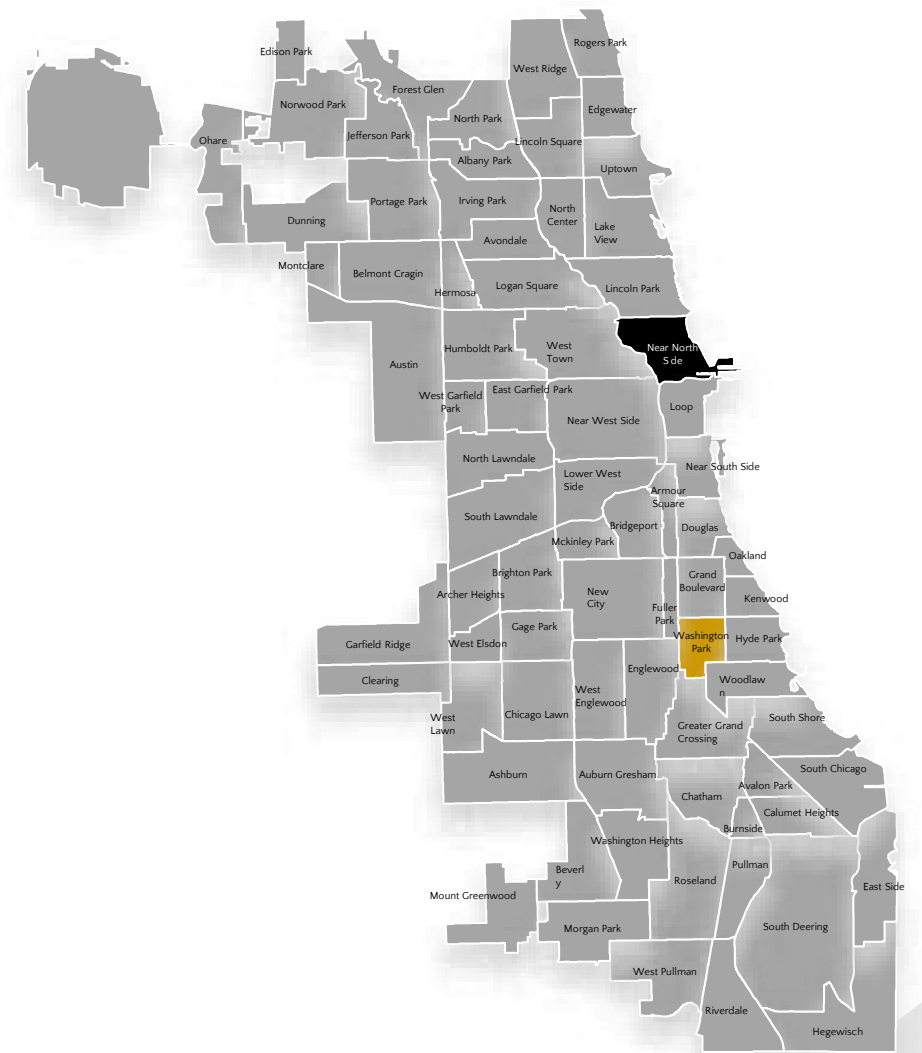
Credit

<https://www.pwc.com/us/en/industries/health-industries/library/retailer-disruption-decentralized-clinical-trials.html>

Health Disparities in Chicago

Achieving health equity requires targeted and dedicated resources toward developing solutions

	Near North Side	Washington Park
DEATH RATE PER 100,000 POPULATION		
Heart Disease	131.6	296.5
Cancer	143.6	290.2
Diabetes	8.2	53
Stroke	28.5	53.4
COVID-19	23.3	129.2
YEARS		
Life Expectancy	81.1	69



Source: Chicago Health Atlas Healthy Chicago 2.0.

Future of Clinical Discovery

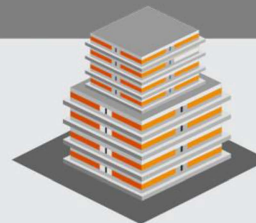
Future State: All activities are centered around the patient



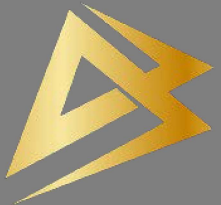
Biopharma
continues current responsibilities and leverages new trial delivery channels to tailor trial designs based on patient needs and preferences.



CRO
No near term changes to CRO activities; anticipated shift to DCT adapted monitoring strategy in the future.



Credit



True Innovation Includes Everyone

If any community is suited to benefit from the strong economic engine that is the life sciences it has to built with every citizen in mind.



Sterling Bay Lincoln Yards



Fulton Market Labs



University of Illinois Innovative Research center



University of Chicago Hyde Park Labs



ARC Innovation Center



“A rising tide lifts all boats”
-John F. Kennedy





Food Finders Food Bank, Inc.

Purdue & FFFB Academic Community Partnerships



What is Food Finders?

- Our mission is to provide food and connections to life-stabilizing resources when our neighbors need us most.
- Through 8 programs and 100 partner agencies, we distribute more than 12M pounds of food annually to the more than 65,000 individuals facing hunger who live in the 16 counties served by FFFB.



Food Finders
Food Bank, Inc.

Why is this needed?

Strengthening pathways out of hunger.

- Hunger is a complex issue.
- When people face hunger, they often struggle to meet other basic needs as well — such as housing, employment, and healthcare.

Some root causes include:

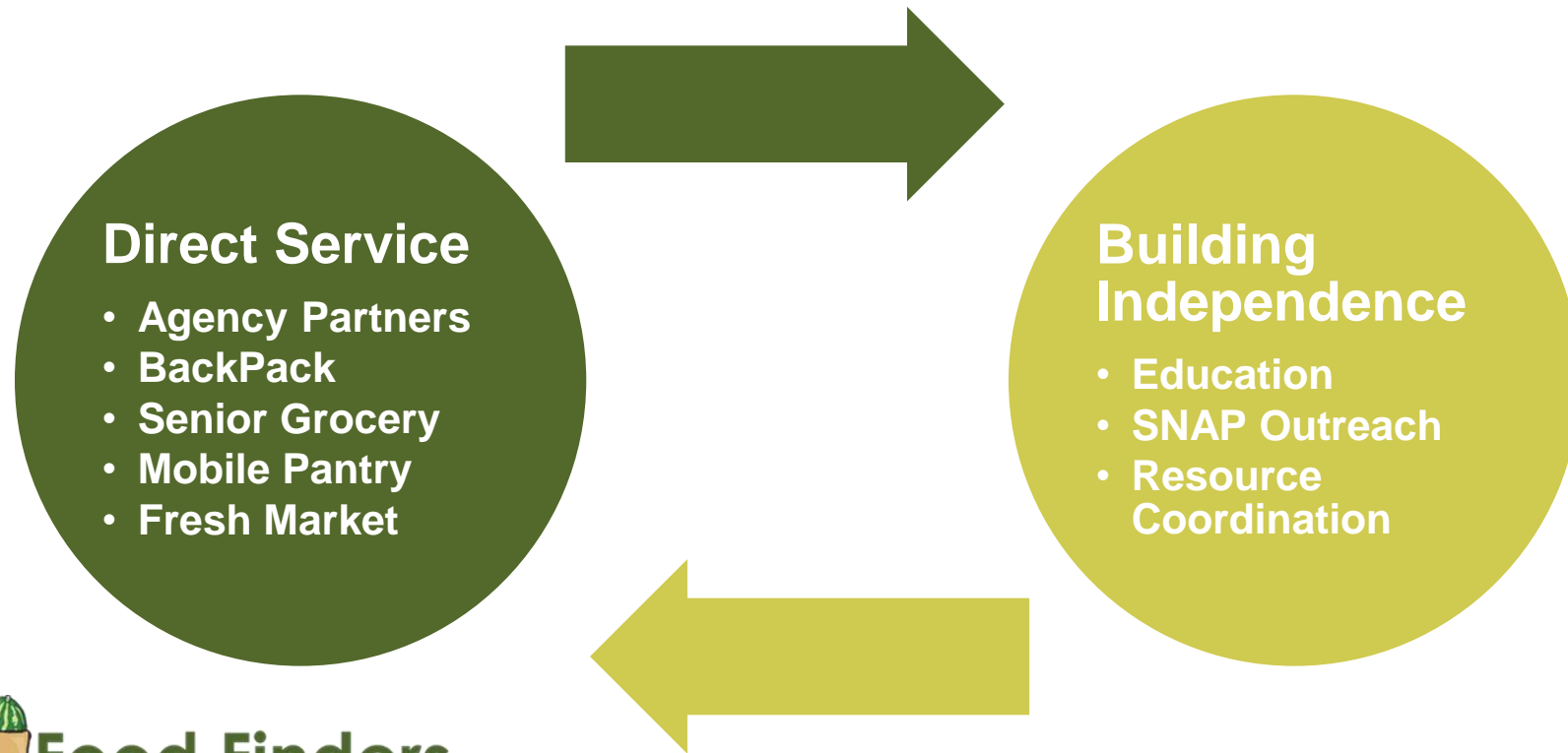
- poverty
- unemployment and low-income
- lack of affordable housing
- lack of access to healthcare
- systemic racism and racial discrimination



Food Finders
Food Bank, Inc.



Fighting Hunger, Giving Hope



Food Finders
Food Bank, Inc.

What is the need? (Post COVID)

USDA report released Oct. 2023

- The number of individuals living in food insecure households in the US in 2022 increased to 44 million, including 13 million children.
- This is an increase of 31% since 2021 (34 M) and 44% since 2020 (48M).
- This is the *highest rate and number since 2014* (8 M) and the *most significant one-year increase since 2008*.



Purdue Collaborations (2023-2024!)

- **Agency Partners**

- ACE Campus Food Pantry
- Purdue United Way
- FFFB Club

- **Events & Food Drives**

- College of Ag + Blue Jean Ball
- College of Ag food drive
- PRF Casino Night/food drive
- PMO fundraiser
- HTM Black Tie Dinner
- Purdue Athletics & Elf Drive
- Civil Eng. Student Advisory Council

- **Service Learning**

- EEE 472
- Industrial Engineering Capstone

- **FFFB Board of Directors**

- **Student Projects**

- ENG 420
- HONR 499
- Anthropology
- EDCI 350
- Food Safety
- HTM 462

- **Education & Classes**

- Purdue Extension
- Dietetics
- Health & Human Services – Public Health & Health Equity internship
- Internships

- **Expertise**

- Center for Food Demand Analysis & Sustainability
- Center for Rural Research, Education & Outreach



Food Finders
Food Bank, Inc.

Did we mention volunteers?!

Throughout FY23,
469 Purdue volunteers
covered 1,170 volunteer
shifts and donated
2,476 hours of service!



Food Finders
Food Bank, Inc.

Purdue & FFFB collaborations:

- Expand FFFB services through the communities we serve
- Share student and faculty knowledge and expertise with people served by FFFB
- Provide FFFB with gaps in knowledge, skills and expertise we may not have access to otherwise (data, analytics, etc.)
- Raise food, funds and awareness

- Data shows that FFFB services are helping the most in need:
 - Higher poverty neighborhoods
 - Areas closest to the FFFB
 - Those with less education.
 - Those with less income.
- Further, when these groups use services to a higher degree than others, they are more likely to use services for less time.
- Certain programs indeed assist users with these steps.

PURDUE | School of Engineering Educati



Food Finders
Food Bank, Inc.

FIGHTING HUNGER, GIVING HOPE

Kier Crites Muller
President/CEO
kcrites@food-finders.org

Food Finders Food Bank
1204 Greenbush Street, Lafayette

www.food-finders.org
765.471.0062



Pre to 3 Home Visitation Program



Lynn Herr RN, BSN, CPN
Vanderburgh County Health Department
January 25, 2024

AGENDA

Review of Data

Program Overview

Summary of Program Data

Expansion/Growth Plan

Questions



INDIANA DATA

120

20

15

10

5

0

2011

2012

2013

2014

2015

2016

2017

2018

2019

2020

2021



White IMR



IN IMR



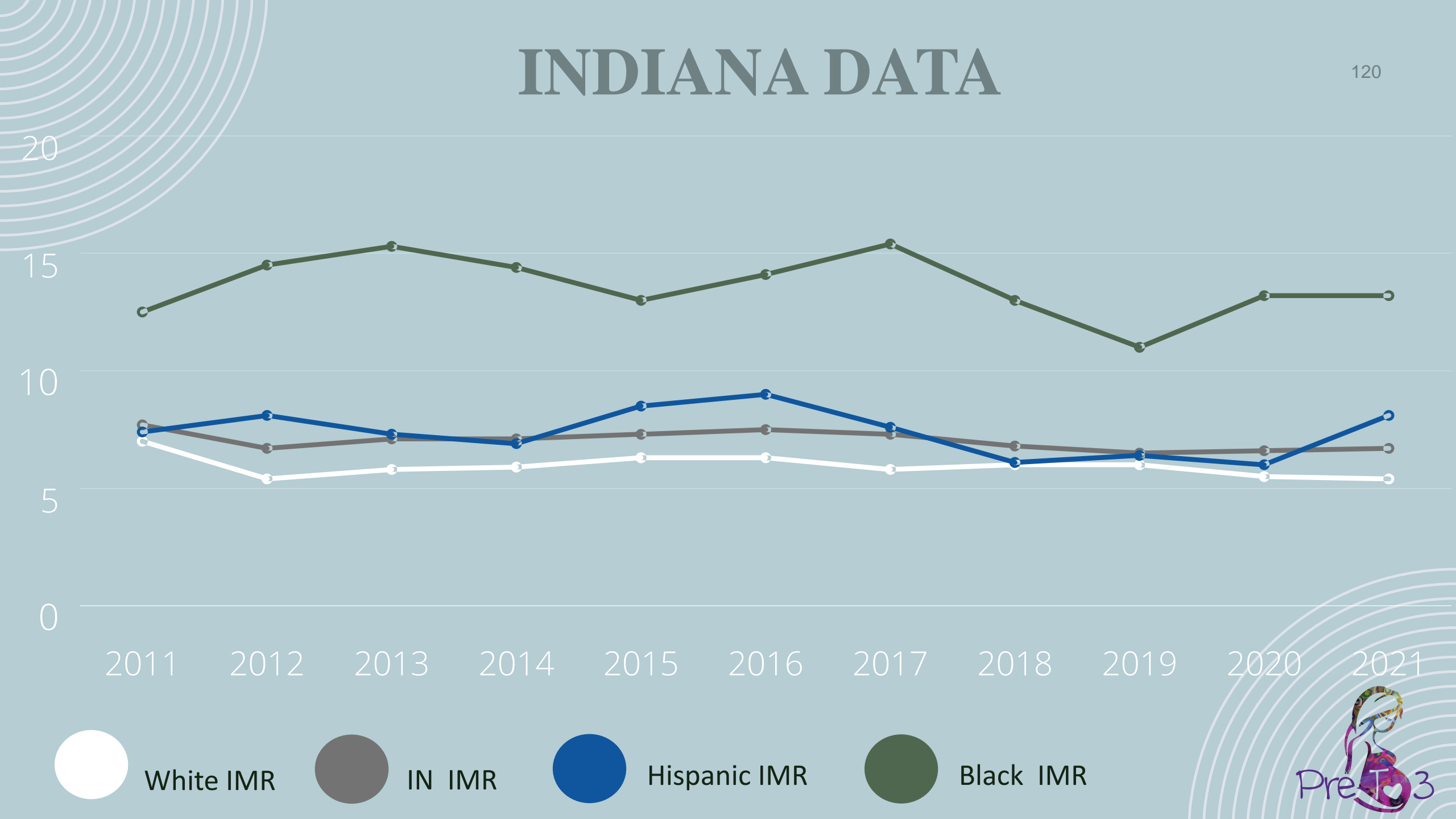
Hispanic IMR



Black IMR



Pre-T3



VANDERBURGH COUNTY DATA

30

20

10

0

2011

2012

2013

2014

2015

2016

2017

2018

2019

2020

2021



White IMR



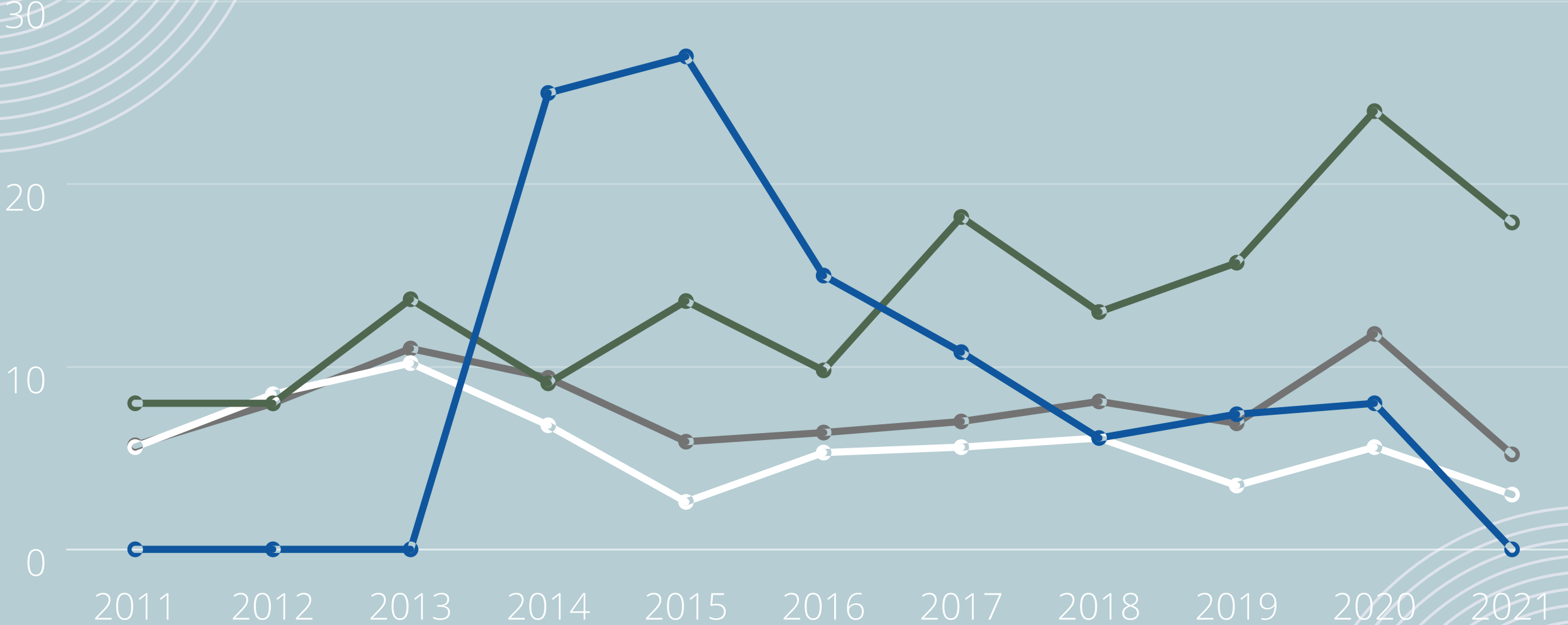
IN IMR



Hispanic IMR



Black IMR



INDIANA DATA

2016-2020 Highest Stable Black
Infant Mortality by County

Elkhart 23.4

Vanderburgh 16.9

St. Joe 15.3

Allen 15.2

Lake 13.9

Marion 12

2017-2021 Stable Black
Infant Mortality Rate

**Vanderburgh 19.1 /1000
live births**

Remains 2nd highest in
Indiana

WHAT IS PRE TO 3

- Home visiting program utilizing community health workers (CHW), client advocates, and registered nurses
- Provide long-term, consistent, hands-on support for families utilizing an evidence-based curriculum
- Designed to reduce infant mortality and improve maternal/child outcomes



PROGRAM OBJECTIVES

1. Improve maternal/child outcomes
2. Foster the parent-child interaction
3. Establish healthy environment for early childhood development
4. Chart paths to family self-sufficiency



ENROLLMENT

- Anyone who is pregnant or has a baby less than 90 days old
- Can remain in the program until 3 years of age
- No enrollment requirements based on
 - Income
 - Parity
 - Education level

125



STRUCTURE



Evidence Based Curriculum



Pre to 3 Program Supervisor



Registered Nurse



Client Advocate & Intake Coordinator



Community Health Worker



Community Health Worker



Community Health Worker



Program Manager & QA Coordinator



Data Analyst



SCREENINGS & ASSESSMENTS

- ACES/Resilience Questionnaire
- Intimate Partner Violence
- Edinburgh Postnatal Depression Scale
- ASQ-3 and ASQ:SE-2
- Home Safety
- Healthy Families Parenting Inventory



CURRENT NUMBERS

1,095
REACH

clients who
completed an
intake
appointment

232
ACTIVE

clients
currently active
in Pre to 3

454
BIRTHS

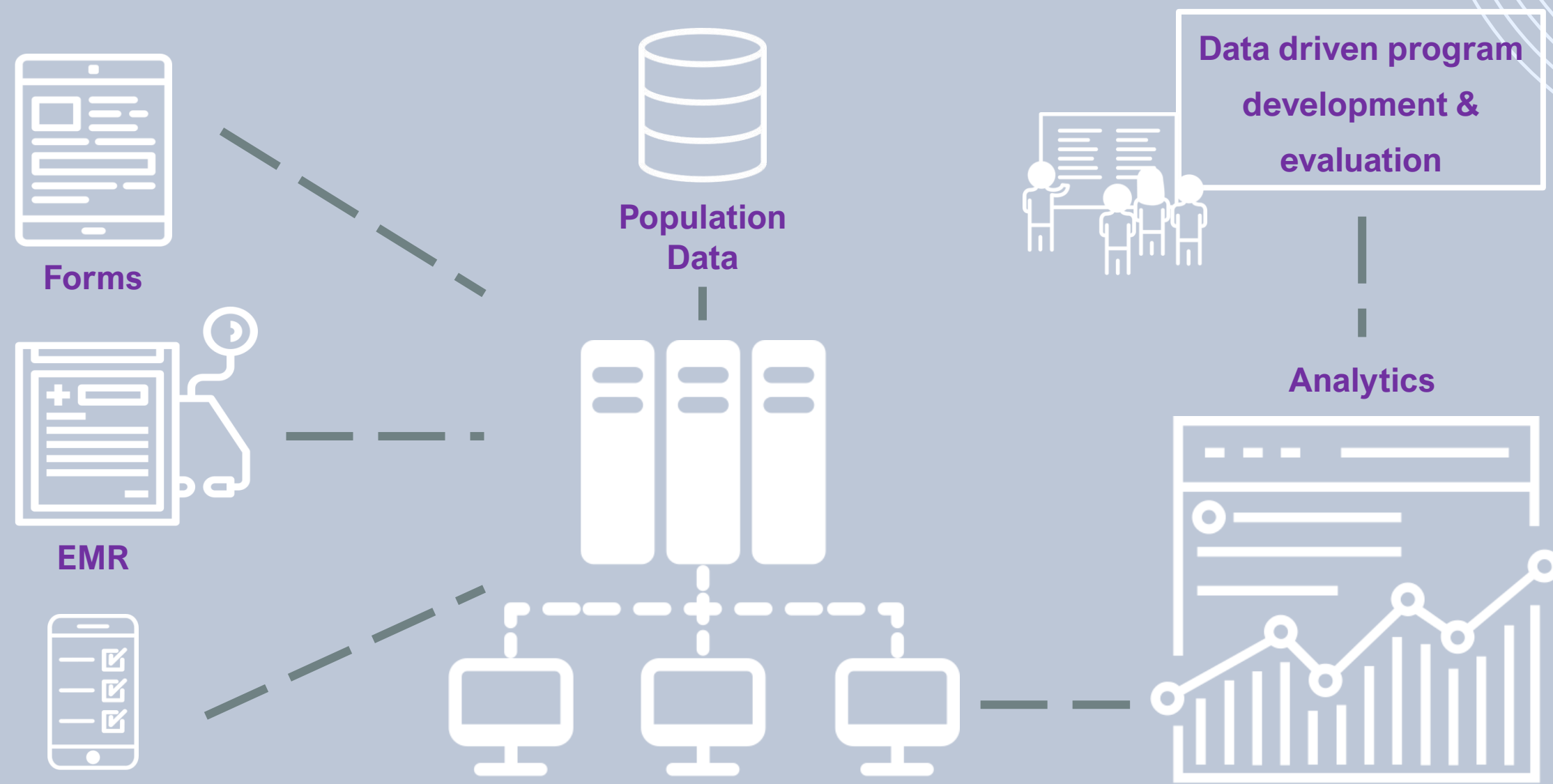
births while enrolled
in the program
(2019 YTD)

23,909
VISITS

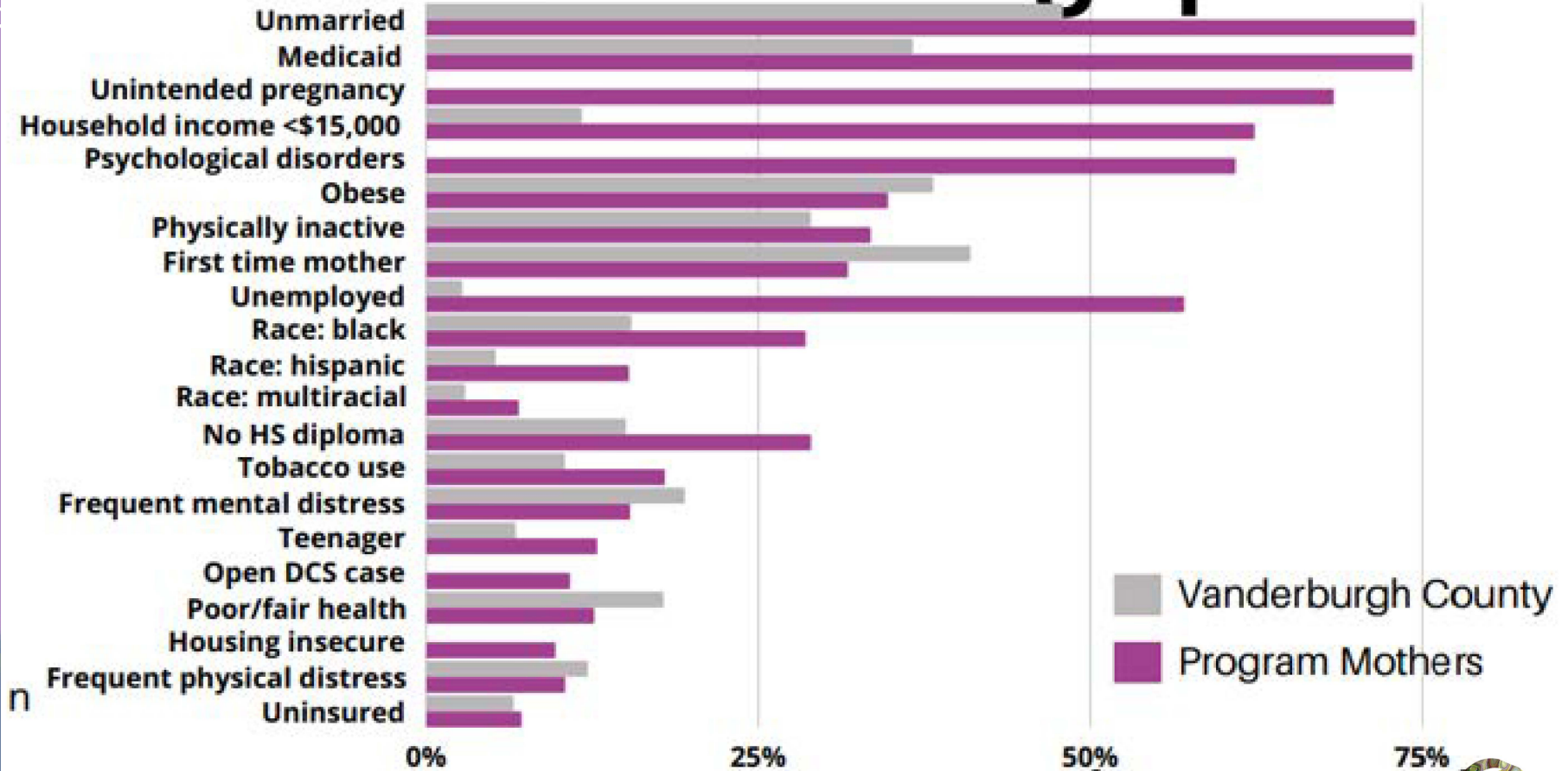
visits
completed
(2019 YTD)



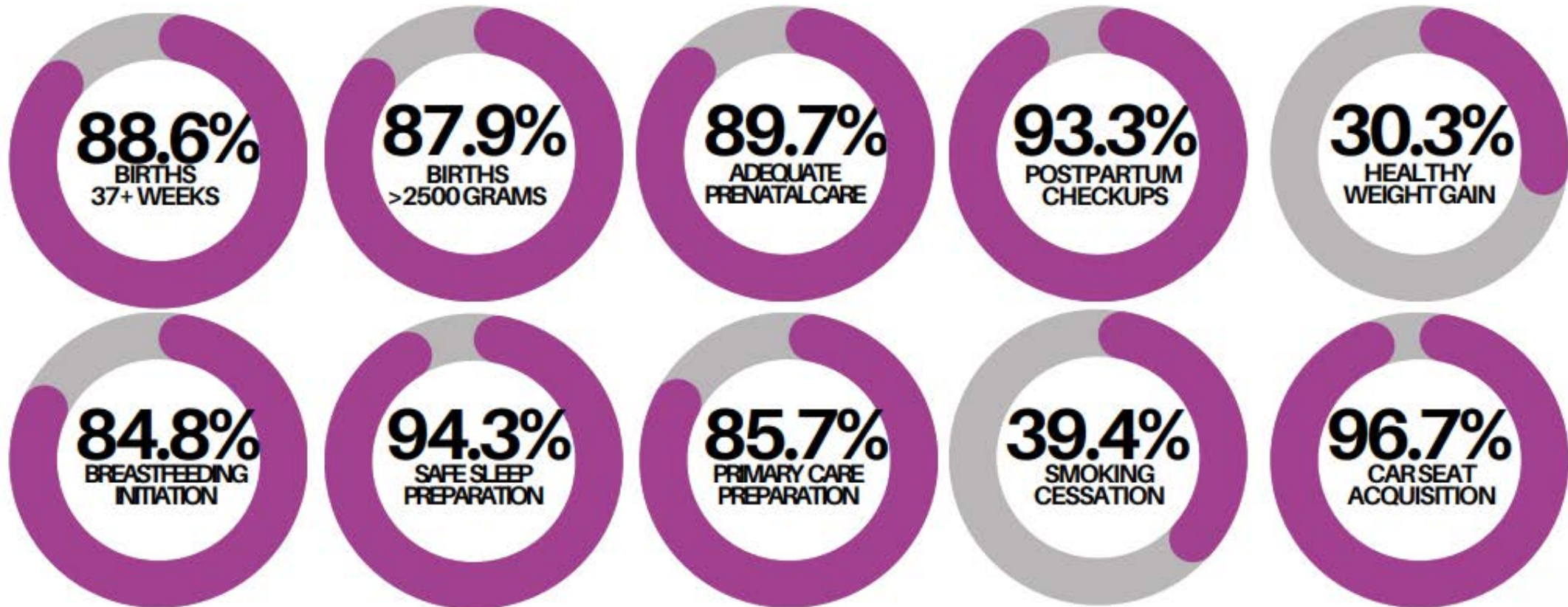
DATA INFRASTRUCTURE



Selected Mother Demographics



PRE TO 3 CLIENT OUTCOMES

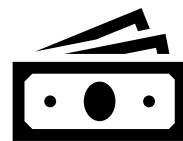


REVENUE/BILLING



25,530

Processed claims
(2019 YTD)



\$376,297.18

Payment
(2019 YTD)

- No private insurance reimbursement
- Cost per visit – about \$200/1 hour visit
 - Salary
 - Travel
 - Curriculum
- Average Medicaid reimbursement - \$22.36/1 hour visit



PROGRAM EXPANSION



PLANNING

Developed a contract – interlocal agreement



GUIDE

Created an expansion & implementation toolkit



ORIENTATION

Tailored an orientation curriculum for other counties



PILOT

Started duplication in Dubois County – anticipate expansion to two additional counties in 2024



QUALITY

Focus on continuous improvement and maintaining fidelity of program



THANK YOU

Lynn Herr RN, BSN, CPN

Vanderburgh County Health Department

lherr@vanderburghcounty.in.gov

yourvchd.org



Poster Awards / Closing

THANK YOU!

Dr. Jerome Adams - adams616@purdue.edu

Holly Wood - hawood@purdue.edu

Aubrey Anderson - adams339@purdue.edu

Brandi Plantenga - bplante@purdue.edu