



PURDUE
UNIVERSITY®

RESEARCH

Office of Research Mission

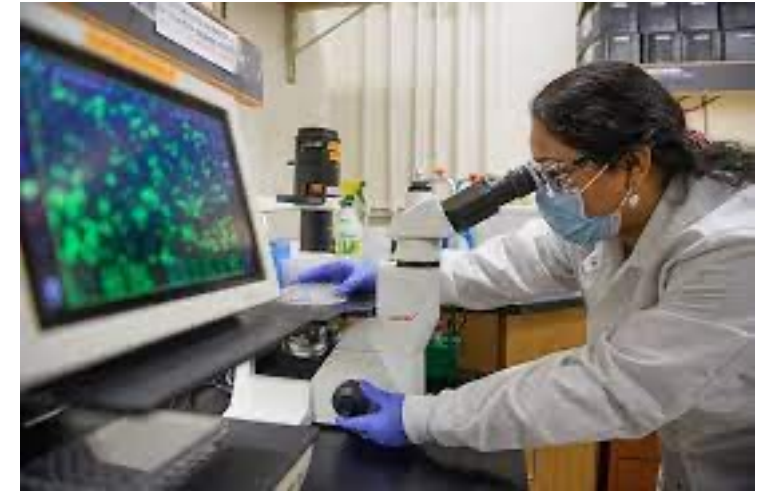
The Office of Research supports an innovative ecosystem that delivers life-changing research, attracts world class researchers, and enables teams to think, act, and engage creatively around society's biggest needs.

- Facilitate research success
- Reward excellence in research and researchers
- Deliver state-of-the-art research administration services
- Remove barriers to enable research
- Securing significant & sustainable external funding
- Facilitate regulatory approvals (export control, human subjects, animal care, conflict of interest...)
- Pursue state of the art research facilities
- Communicate the impact of research advances

Purdue Research

Providing innovative solutions that secure the nation and the world:

- Improving global health & life sciences
- Strengthening national defense
- Providing a safe and dependable food supply
- Ensuring economic prosperity
- Protecting the environment
- Modernizing housing and transportation infrastructure



**World-Class
Faculty**

**State-of-the-Art
Facilities**

**Ground-breaking
Partnerships**

Recognition of Purdue Research Faculty

24 Fellows	National Academies of Science, Engineering and Medicine
18 Winners	National Science Foundation Faculty Early Career Development Awards (2022)
69 Fellows	American Association for the Advancement of Science
2 Winners	World Food Prize
9 Fellows	American Academy of the Arts and Sciences
15 Fellows	National Academy of Inventors

Dual Top Producer for Faculty and Student Fulbright Scholars (2022-23)

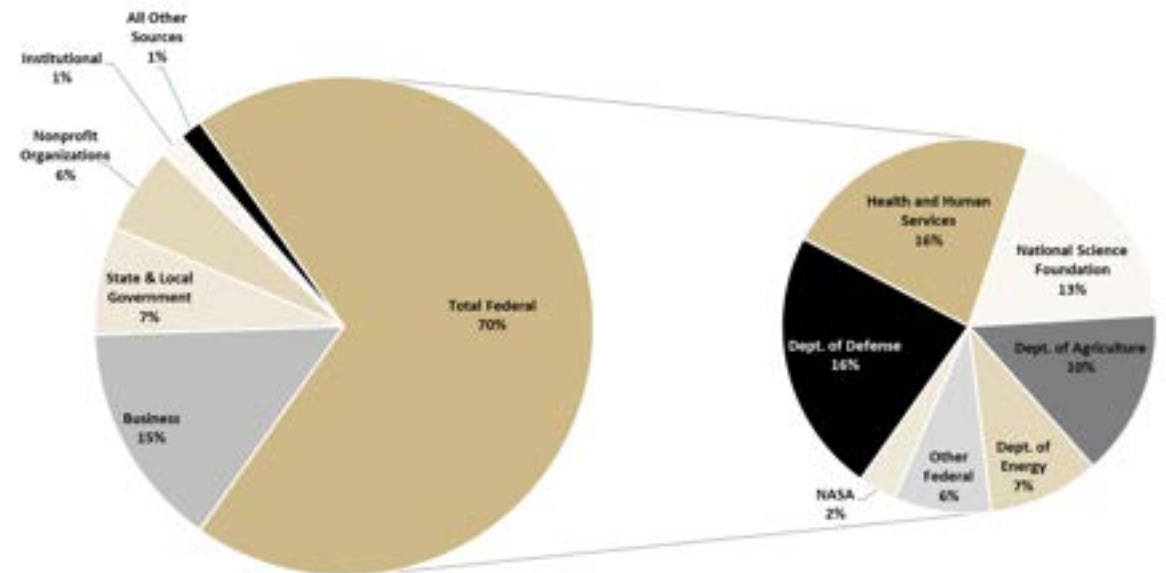
The National Academies of SCIENCES ENGINEERING MEDICINE



Record Research Funding: \$613M

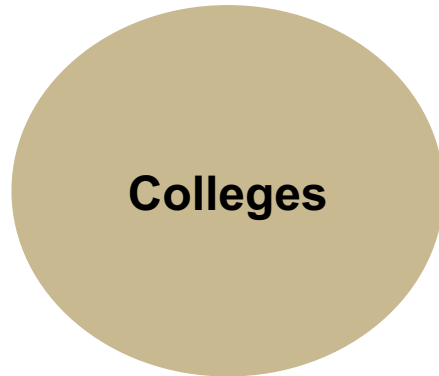
Significant Recognition of Purdue's Research Excellence

	FY 2023
	Research Award Amount
U.S. Federal Government	
Dept. of Defense	98,007,754
Dept. of Health and Human Services	95,552,153
National Science Foundation	80,576,487
Dept. of Energy	41,137,235
Dept. of Agriculture	61,581,572
National Aeronautics and Space Admin	13,991,847
Other Federal	19,057,264
Dept. of Education	2,365,117
Dept. of Interior	3,442,697
Environmental Protection Agency	1,468,675
Dept. of Transportation	3,660,531
Agency for International Development	5,975,789
Total U.S. Federal Government	426,817,121
State and Local Government	42,771,671
Business	89,997,045
Nonprofit Organizations	34,965,659
All Other Sources	9,122,102
Total Non-Federal	176,856,477
Total Purdue System-Wide	\$603,673,598
Other Research Funds Administered by SPS	
Institutional (PRF)	9,661,596
Total Purdue System-Wide	\$613,335,193



A Unique Ecosystem of Innovation

Powering interdisciplinary solutions to the world's key needs



“Purdue Research is flexibly structured to enable interdisciplinary breakthroughs across Purdue and to meet the needs of our governmental, corporate, and academic partners.”

**– Karen Plaut
Executive Vice President
for Research**

Research at Colleges, Institutes, and Centers

Colleges

Agriculture

Business

Education

Engineering

Health & Human Science

Liberal Arts

Pharmacy

Polytechnic

Science

Veterinary Medicine

Honors

Interdisciplinary Institutes and Centers

Birck Nanotechnology Center

Center for Education and Research in
Information Assurance and Security
(CERIAS)

Network for Computational
Nanotechnology

Purdue Center for the Science of
Information

Purdue Institute for National Security

Purdue Institute for a Sustainable
Future

Purdue Policy Research Institute

Purdue Quantum Science and
Engineering Institute

Purdue Quantum Science and
Engineering Institute

Purdue Institute for Inflammation,
Immunology and Infectious Disease
(PI4D)

Purdue Institute for Integrative
Neuroscience

Purdue Institute for Drug Discovery

Bindley Bioscience Center

Regenstrief Center for Healthcare
Engineering

William D. Young Institute for Advanced
Manufacturing of Pharmaceuticals

Purdue Institute for Cancer Research

Purdue Students, Staff, Faculty

“Enabling our people to achieve breakthroughs and drive innovations in support of solving the world’s most critical problems”

↓ Discovery Park District (DPD) Institutes and Centers ↓

Institutes and Centers

- 1 Center for Education and Research in Information Assurance and Security
- 2 Birck Nanotechnology
- 3 Policy Research Institute
- 4 Network for Computational AI Nanotechnology
- 5 Institute for National Security
- 6 Institute for a Sustainable Future
- 7 Center for Science of Information
- 8 Quantum Science and Engineering Institute

Biomedical and Health Sciences

- 1 Bindley Bioscience Center
- 2 Institute for Drug Discovery
- 3 Institute for Cancer Research
- 4 Institute for Inflammation, Immunology, and Infectious Disease
- 5 Institute for Integrative Neuroscience
- 6 Regenstrief Center for Healthcare Engineering
- 7 William D. Young Institute for Advanced Pharmaceutical Manufacturing

Affiliated Entities

- 1 JTRP
- 2 CISTAR
- 3 Global Food Security
- 4 EMBRIO
- 5 WGHI
- 6 SCALE
- 7 NHERI-NCO



- World-Class R&D Research Facilities
- Vertically-integrated design for system of system capability
- Marrying virtual with physical (Modeling and Sim simulation with experimentation)
- Co-locating academia, industry, national labs

OVER
1000
Engaged
Faculty

\$109M
Research
Expenditures
Since 2020

Purdue Applied Research Institute (PARI)

An Agile Platform to Scale Applied Research

PARI LLC, is Purdue's nonprofit applied research arm. Launched in July 2021 with the Purdue investments in people, state-of-the-art facilities and infrastructure.

- National Security and Defense
- Technology Acceleration
- Global Development and Innovation
- Infrastructure Research and Innovative Solutions



Purdue University Office of Research



Sponsored Program Services
Security & Intelligence
Human Resources
Communications
Regulatory Affairs



Partner Relations
Facilities
Animal Resources
Export Controls
Operations
Scientific Integrity

Strategic Interdisciplinary Research

PERA

Institutes & Centers at Discovery Park District

How can we help you?

Our job is to help you be successful

- Finding Grant Opportunities
- Submitting Grants
- Finding Colleagues at Purdue
- Finding Colleagues at Other Institution
- Getting involved with Purdue's initiatives
- Working with Industry
- Communicating your work to an external audience
- Introducing you to various federal agencies
- Making sure your work is in compliance with federal guidelines
- Rewarding your success



Some of the New or Renewed Initiatives to Support Faculty

- Funding
 - Help with finding grants and grant writing
 - Pre-award services and help with the regulatory environment
 - NIH Incentive and Bridge program
 - Incentives to write review papers, monographs and academic books
 - Funding for large, competitive national center grants
 - Discretionary funds for new awards of \$5 million or more
- Support
 - Purdue Faculty Concierge
 - Faculty Recognition Office
 - Trial credit card program
 - Increased Sponsored Program Services (SPS) staffing
 - Internal Grants Competitions – Showalter, Kinley



Office of Research



Some key individuals who can help you



Dan Delaurentis
Discovery Park District
ddelaure@purdue.edu



Ken Sandel
Sponsored Program Services
sandel@purdue.edu



Jennifer Merzdorf
Purdue Faculty Concierge
jmerzdo@purdue.edu



Jamie Mohler
Research Compliance, Integrity & Security
jfmohler@purdu.edu



kplaut@purdue.edu

www.purdue.edu/research/oevprp