



Research and Partnerships @ Purdue

AUGUST 20, 2020





Purdue University – Quick Facts

Public land-grant university

44,500 residential students, 2/3 STEM

Top-10 engineering and agriculture, UG and GRAD

5th in nation for degrees to UG, PhD, women engineers

Purdue Global and Online



PURDUE MOVES
THE WORLD FORWARD



Reinventing the Land-Grant Concept for the 21st Century

As Indiana's land-grant university, Purdue's focus has grown far beyond "agriculture and the mechanic arts" to encompass science, technology, health, management, liberal arts and more. Still, we remain ever true to the timeless tenets of our land-grant mission: Building human capital. Advancing research focused on our world's most important problems. Engaging deeply with our partners.



We will invest and expand in the research areas and academic disciplines that have the greatest potential to change the world for the better.

Affordability and
~~Accessibility~~
STEM Leadership

Transformative Education

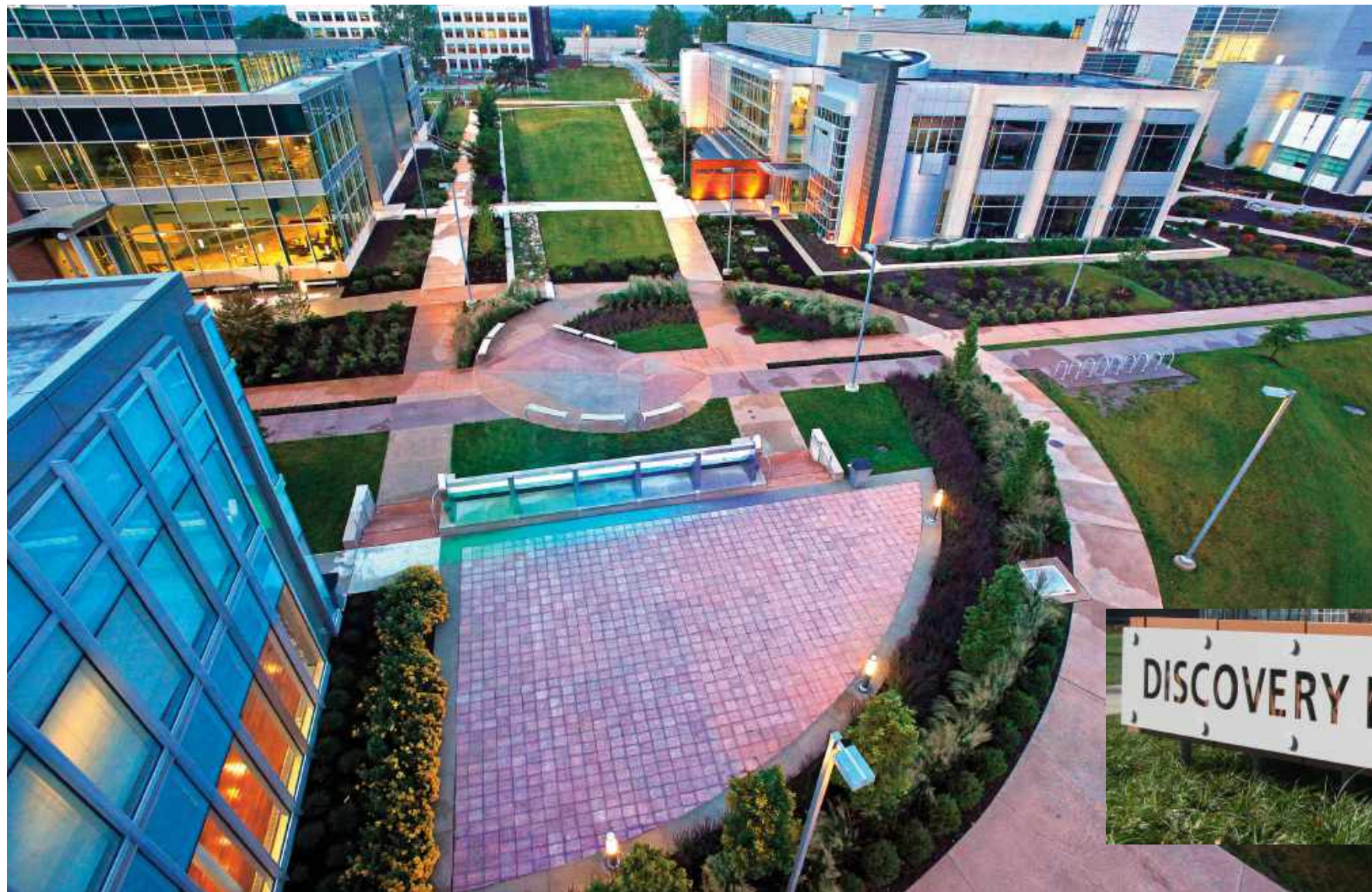
World-Changing Research

Online Learning



Oversees Purdue's overall research and partnership enterprise

- Discovery Park – university centers/institutes and shared user facilities
- Research Development, including federal and state engagement
- Office of Industry Partnerships (with UDO)
- Office of Global Programs, including International Student and Scholar Services
- Research Regulatory Affairs
- University Vet and Laboratory Animal Program
- Liaison with Sponsored Program Services, Office of Technology Commercialization, and the Foundry for Start-Ups





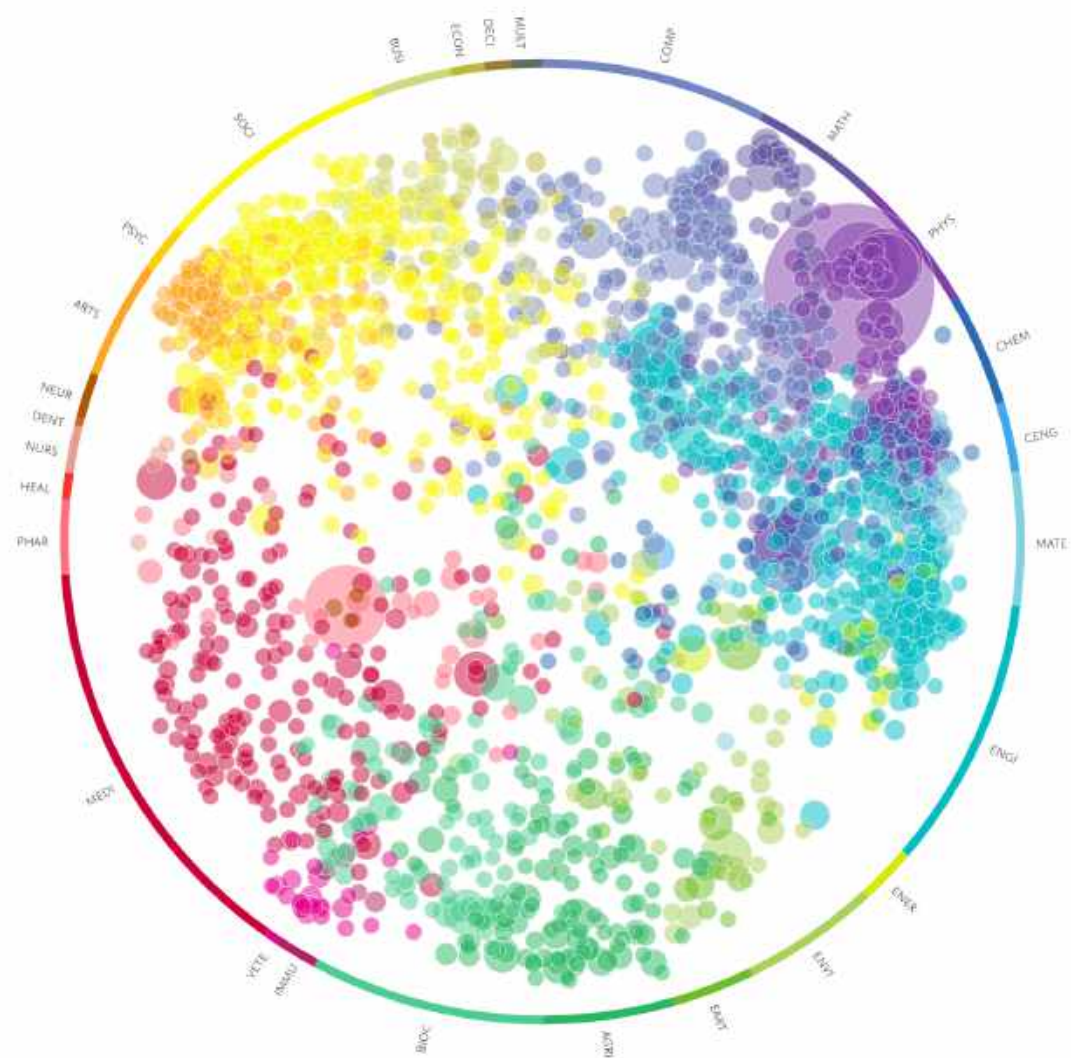
OFFICE OF INDUSTRY PARTNERSHIPS

The Office of Industry Partnerships is your company's portal to Purdue University. We work with businesses, faculty, staff, and students to create mutually beneficial partnerships that accelerate innovation and create lasting impact.

CONVERGENCE



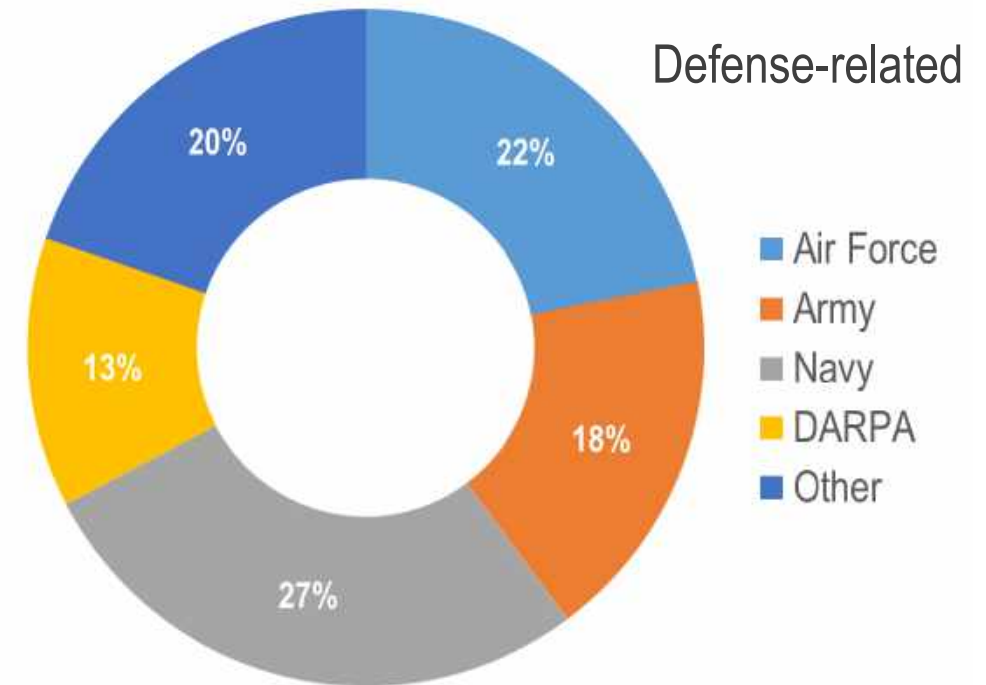
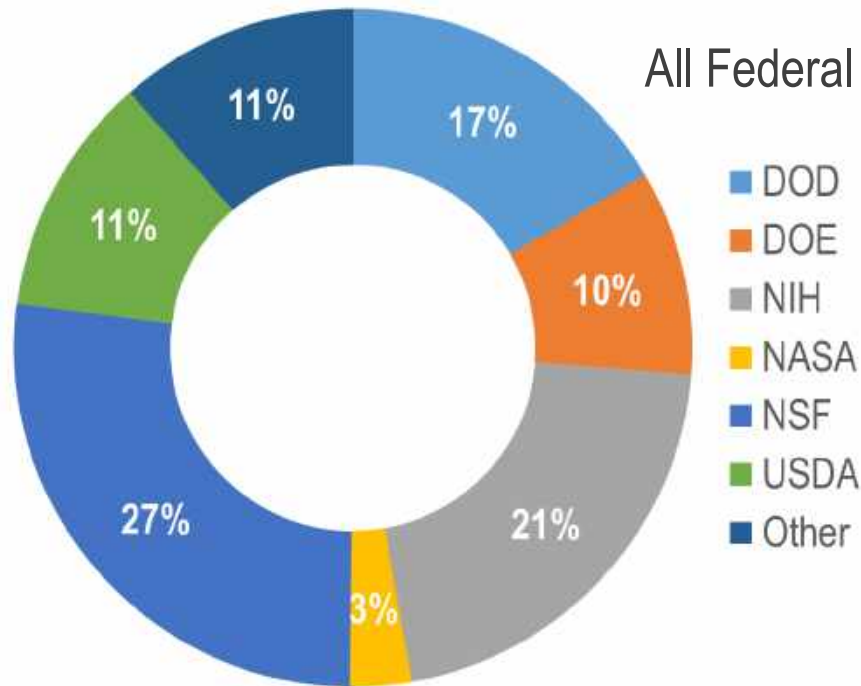
Purdue faculty, students, and partners are engaged in leading research across a diverse and comprehensive set of topics that are well-aligned with grand challenges facing the world today



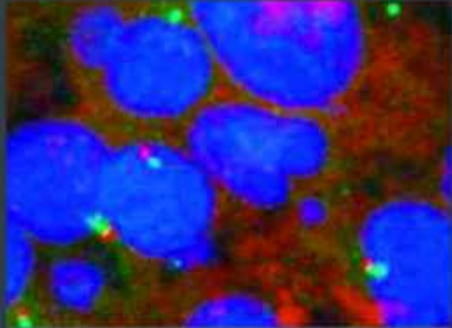
Purdue scholarly publications by
topic

FY19 Total Research Expenditures: \$672 Million (no medical school)

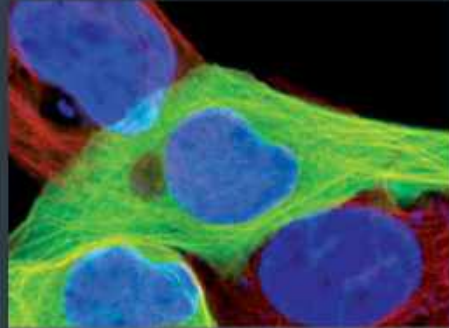
External Breakdown: 55% Federal, 10% State & Foreign, 35% Industry & Foundation



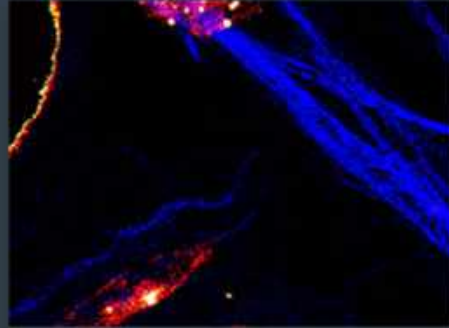
Life Sciences Centers and Institutes



DRUG DISCOVERY



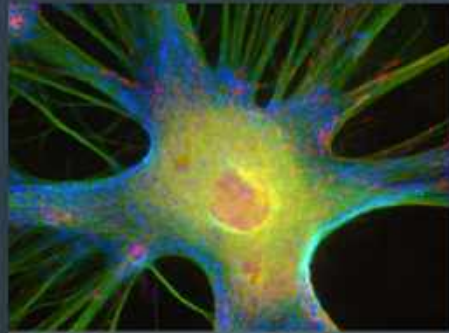
INFLAMMATION, IMMUNOLOGY,
& INFECTIOUS DISEASES



CANCER



PLANT SCIENCE



NEUROSCIENCE



HEALTHCARE ENGINEERING



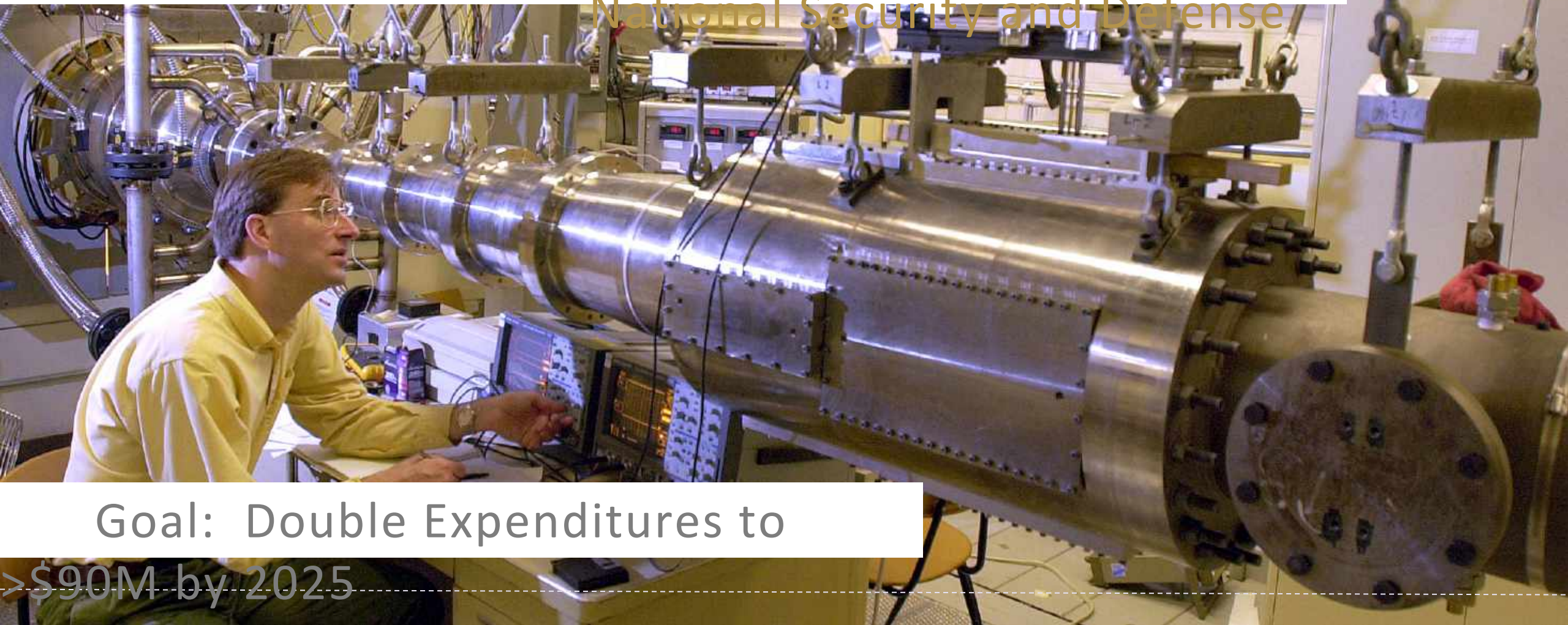
Life Sciences and
Biomedical
Integrative Data Science
Initiative
Interdisciplinary Spaces
State Street Innovation
District
Technology
Commercialization

Since 2016, >\$250M Investment in Major Life Science Initiative



New Major University-Level Initiative

National Security and Defense



Goal: Double Expenditures to

>\$90M by 2025



Regulatory Affairs

- Human Subjects Research - IRB
- Animal Care and Use - IACUC
- Biosafety/rDNA Research
- Research Information Assurance
- Conflicts of Interest



June 11, 2019

Purdue ranks 12th among worldwide universities granted U.S. utility patents for 2018

November 21, 2019

Wall Street Journal lists Purdue No. 3 nationally, No. 6 globally in startup creation from university technologies



The Associate Dean for Research in your College is a key liaison to the OEVPRP

- ADRs are a source of information on funding opportunities, university resources, and connections to other Colleges
- ADRs review proposals on limited submission programs and internal grants programs run by OEVPRP

