

## Quick facts on the LTAP MS4 Training Modules...

### Module 9: Virtual Inspection

#### THE CONSTRUCTION MODULE TRAINING SERIES

To assist MS4 entities meet IDEM MS4 General Permit training requirements, LTAP has developed a series of MS4 Training Modules that cover the Construction Site Stormwater Runoff MCM of the IDEM MS4 General Permit (Section 4.5). Twelve modules have been created as part of the Construction Program Training series. These training resources are available at no cost to the user and are available on-demand via the LTAP website: [www.purdue.edu/intlap/](http://www.purdue.edu/intlap/)



#### MODULE 1: CONSTRUCTION PROGRAM OVERVIEW



#### MODULE 2: CONSTRUCTION PROJECTS OVERVIEW



#### MODULE 3: KEY COMPONENTS OF MS4 CONSTRUCTION PROGRAMS



#### MODULE 4: ORDINANCE & TECHNICAL STANDARDS



#### MODULE 5: STORMWATER POLLUTION PREVENTION PLANS



#### MODULE 6: PART 1: CONSTRUCTION BEST MANAGEMENT PRACTICES



#### MODULE 7: PART 2: CONSTRUCTION STRUCTURAL BEST MANAGEMENT PRACTICES



#### MODULE 8: SELF-MONITORING PROGRAM & THE PROJECT MANAGEMENT LOG



#### MODULE 9: VIRTUAL INSPECTION



#### MODULE 10: INSPECTIONS & ENFORCEMENT FOR MS4 INSPECTORS



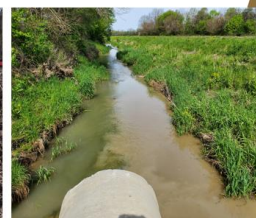
#### MODULE 11: CONCLUDING A CONSTRUCTION PROJECT



#### MODULE 12: CONSTRUCTION STORMWATER WORKFORCE

## Construction Program Training

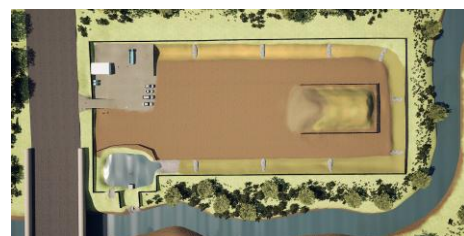
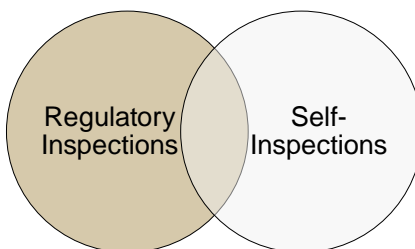
### Module 9: Virtual Inspection


**PURDUE**  
UNIVERSITY

Local Technical Assistance Program

Individuals conducting construction stormwater inspections must know how to prepare for an inspection and understand the process of evaluating a construction site. They must also understand their role as an inspector, which differs between self-monitoring evaluations and regulatory inspections. The intended audience for Module 9 includes MS4 staff conducting regulatory inspections for implementation of the construction site stormwater runoff MCM, but the information is still beneficial for a general construction stormwater audience.

Module 9 goes through the procedure of conducting a stormwater inspection at an active construction site. The module covers differences between regulatory inspections and self-monitoring, how to plan for an inspection, and how to conduct an inspection. A virtual inspection of an active construction site takes place to conclude the module.



#### Learning Objectives of Training Module 9:

1. Understand the difference between a regulatory inspection and a self-monitoring program inspection.
2. Develop strategies for preparing and conducting site inspections.
3. Follow along on a virtual inspection.