

Quick facts on the LTAP MS4 Training Modules...

Module 6: Part 1: Construction Best Management Practices

THE CONSTRUCTION MODULE TRAINING SERIES

To assist MS4 entities meet IDEM MS4 General Permit training requirements, LTAP has developed a series of MS4 Training Modules that cover the Construction Site Stormwater Runoff MCM of the IDEM MS4 General Permit (Section 4.5). Twelve modules have been created as part of the Construction Program Training series. These training resources are available at no cost to the user and are available on-demand via the LTAP website: www.purdue.edu/intlap/



MODULE 1: CONSTRUCTION PROGRAM OVERVIEW



MODULE 2: CONSTRUCTION PROJECTS OVERVIEW



MODULE 3: KEY COMPONENTS OF MS4 CONSTRUCTION PROGRAMS



MODULE 4: ORDINANCE & TECHNICAL STANDARDS



MODULE 5: STORMWATER POLLUTION PREVENTION PLANS



MODULE 6: PART 1: CONSTRUCTION BEST MANAGEMENT PRACTICES



MODULE 7: PART 2: CONSTRUCTION STRUCTURAL BEST MANAGEMENT PRACTICES



MODULE 8: SELF-MONITORING PROGRAM & THE PROJECT MANAGEMENT LOG



MODULE 9: VIRTUAL INSPECTION



MODULE 10: INSPECTIONS & ENFORCEMENT FOR MS4 INSPECTORS



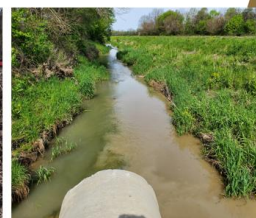
MODULE 11: CONCLUDING A CONSTRUCTION PROJECT



MODULE 12: CONSTRUCTION STORMWATER WORKFORCE

Construction Program Training

Module 6: Part 1: Construction Best Management Practices



PURDUE
UNIVERSITY

Local Technical Assistance Program

Construction stormwater best management practices (BMPs) are stormwater quality measures intended to reduce stormwater pollution from land disturbing and construction activities. Module 6 is intended for a general construction stormwater audience, but may be especially beneficial for individuals involved in any part of the stormwater pollution prevention plan preparation, review, or implementation process.

Module 6 covers key concepts of construction BMPs for stormwater management. The module discusses the roles of structural and non-structural BMPs, the importance of planning, and some key construction stormwater BMP concepts.



Learning Objectives of Training Module 6:

1. Classify structural vs. non-structural BMPs.
2. Understand key concepts of BMP implementation.
3. Examine how planning, phasing, and sequencing influences a project.