

Quick facts on the LTAP MS4 Training Modules...

Module 4: Ordinance & Technical Standards

THE CONSTRUCTION MODULE TRAINING SERIES

To assist MS4 entities meet IDEM MS4 General Permit training requirements, LTAP has developed a series of MS4 Training Modules that cover the Construction Site Stormwater Runoff MCM of the IDEM MS4 General Permit (Section 4.5). Twelve modules have been created as part of the Construction Program Training series. These training resources are available at no cost to the user and are available on-demand via the LTAP website: www.purdue.edu/inltap/



MODULE 1: CONSTRUCTION PROGRAM OVERVIEW



MODULE 2: CONSTRUCTION PROJECTS OVERVIEW



MODULE 3: KEY COMPONENTS OF MS4 CONSTRUCTION PROGRAMS



MODULE 4: ORDINANCE & TECHNICAL STANDARDS



MODULE 5: STORMWATER POLLUTION PREVENTION PLANS



MODULE 6: PART 1: CONSTRUCTION BEST MANAGEMENT PRACTICES



MODULE 7: PART 2: CONSTRUCTION STRUCTURAL BEST MANAGEMENT PRACTICES



MODULE 8: SELF-MONITORING PROGRAM & THE PROJECT MANAGEMENT LOG



MODULE 9: VIRTUAL INSPECTION



MODULE 10: INSPECTIONS & ENFORCEMENT FOR MS4 INSPECTORS



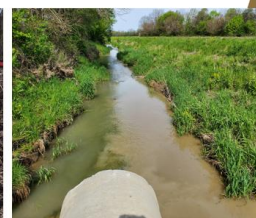
MODULE 11: CONCLUDING A CONSTRUCTION PROJECT



MODULE 12: CONSTRUCTION STORMWATER WORKFORCE

Construction Program Training

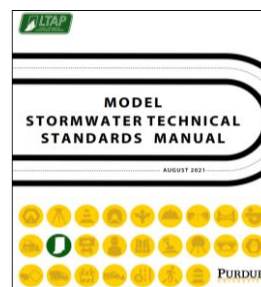
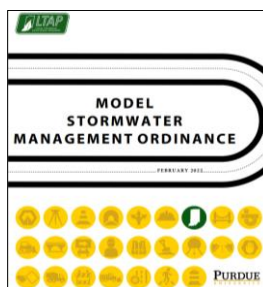
Module 4: Ordinance & Technical Standards


PURDUE
UNIVERSITY®

Local Technical Assistance Program

The MS4 General Permit requires designated MS4 entities to adopt ordinances or other regulatory mechanisms to regulate eligible construction projects as well as standards and specifications for the implementation of stormwater quality and management measures. The intended audience for Module 4 includes MS4 staff implementing the construction site stormwater runoff MCM, but the information is still beneficial for a general construction stormwater audience.

Module 4 covers key components of construction stormwater ordinances, including applicability, pollution prevention, design standards, and compliance requirements. It also details technical standards for erosion and sediment control, stabilization monitoring, and documentation, along with relevant forms.



Learning Objectives of Training Module 4:

1. Discuss the key components in the ordinance and technical standards.
2. Understand how the ordinance and technical standards work together.
3. Review the essential and recommended forms that every MS4 should have at their disposal.