

## Quick facts on the LTAP MS4 Training Modules...

### *Module 3: Key Components of MS4 Construction Programs*

#### THE CONSTRUCTION MODULE TRAINING SERIES

To assist MS4 entities meet IDEM MS4 General Permit training requirements, LTAP has developed a series of MS4 Training Modules that cover the Construction Site Stormwater Runoff MCM of the IDEM MS4 General Permit (Section 4.5). Twelve modules have been created as part of the Construction Program Training series. These training resources are available at no cost to the user and are available on-demand via the LTAP website: [www.purdue.edu/inltap/](http://www.purdue.edu/inltap/)



#### MODULE 1: CONSTRUCTION PROGRAM OVERVIEW



#### MODULE 2: CONSTRUCTION PROJECTS OVERVIEW



#### MODULE 3: KEY COMPONENTS OF MS4 CONSTRUCTION PROGRAMS



#### MODULE 4: ORDINANCE & TECHNICAL STANDARDS



#### MODULE 5: STORMWATER POLLUTION PREVENTION PLANS



#### MODULE 6: PART 1: CONSTRUCTION BEST MANAGEMENT PRACTICES



#### MODULE 7: PART 2: CONSTRUCTION STRUCTURAL BEST MANAGEMENT PRACTICES



#### MODULE 8: SELF-MONITORING PROGRAM & THE PROJECT MANAGEMENT LOG



#### MODULE 9: VIRTUAL INSPECTION



#### MODULE 10: INSPECTIONS & ENFORCEMENT FOR MS4 INSPECTORS



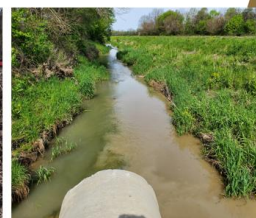
#### MODULE 11: CONCLUDING A CONSTRUCTION PROJECT



#### MODULE 12: CONSTRUCTION STORMWATER WORKFORCE

## Construction Program Training

### *Module 3: Key Components of MS4 Construction Programs*


**PURDUE**  
UNIVERSITY

Local Technical Assistance Program

The MS4 General Permit requires designated MS4 entities to develop and administer an erosion and sediment control program. The intended audience for Module 3 includes MS4 staff implementing the construction site stormwater runoff MCM, but the information is still beneficial for a general construction stormwater audience.

Module 3 covers the essential components of an Municipal Separate Storm Sewer System (MS4) construction program before a new project begins. It identifies key tools and provides guidance on implementing a construction program and meeting the requirements of the MS4 General Permit.



### *Learning Objectives of Training Module 3:*

1. Identify tools needed to implement an MS4 construction program.
2. Illustrate the stormwater pollution prevention plan (SWPPP) review process from start to finish.
3. Examine recommended steps to take before construction begins as an MS4.