

## Quick facts on the LTAP MS4 Training Modules...

### Module 2: Construction Projects Overview

#### THE CONSTRUCTION MODULE TRAINING SERIES

To assist MS4 entities meet IDEM MS4 General Permit training requirements, LTAP has developed a series of MS4 Training Modules that cover the Construction Site Stormwater Runoff MCM of the IDEM MS4 General Permit (Section 4.5). Twelve modules have been created as part of the Construction Program Training series. These training resources are available at no cost to the user and are available on-demand via the LTAP website: [www.purdue.edu/intlap/](http://www.purdue.edu/intlap/)



MODULE 1: CONSTRUCTION PROGRAM OVERVIEW



MODULE 2: CONSTRUCTION PROJECTS OVERVIEW



MODULE 3: KEY COMPONENTS OF MS4 CONSTRUCTION PROGRAMS



MODULE 4: ORDINANCE & TECHNICAL STANDARDS



MODULE 5: STORMWATER POLLUTION PREVENTION PLANS



MODULE 6: PART 1: CONSTRUCTION BEST MANAGEMENT PRACTICES



MODULE 7: PART 2: CONSTRUCTION STRUCTURAL BEST MANAGEMENT PRACTICES



MODULE 8: SELF-MONITORING PROGRAM & THE PROJECT MANAGEMENT LOG



MODULE 9: VIRTUAL INSPECTION



MODULE 10: INSPECTIONS & ENFORCEMENT FOR MS4 INSPECTORS



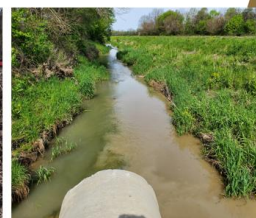
MODULE 11: CONCLUDING A CONSTRUCTION PROJECT



MODULE 12: CONSTRUCTION STORMWATER WORKFORCE

## Construction Program Training

### Module 2: Construction Projects Overview



PURDUE  
UNIVERSITY

Local Technical Assistance Program

Certain types of construction projects with land disturbing activities must develop and implement plans to address potential stormwater pollutants and minimize sediment discharges from the project site. Module 2 is intended for a general construction stormwater audience, but may be especially beneficial for individuals involved in planning, designing, or implementing stormwater pollution prevention plans for construction projects.

Module 2 provides an overview of stormwater management planning considerations and processes for construction projects. The module covers the construction project process from planning to completion, detailing site assessments, permitting, environmental considerations, best management practices, and regulatory tools.



#### Learning Objectives of Training Module 2:

1. Understand the importance of planning for erosion and sediment control before a project.
2. Remember key terminology.
3. Recognize regulatory tools that are available.