

## Quick facts on the LTAP MS4 Training Modules...

### Module 12: Construction Stormwater Work Force

#### THE CONSTRUCTION MODULE TRAINING SERIES

To assist MS4 entities meet IDEM MS4 General Permit training requirements, LTAP has developed a series of MS4 Training Modules that cover the Construction Site Stormwater Runoff MCM of the IDEM MS4 General Permit (Section 4.5). Twelve modules have been created as part of the Construction Program Training series. These training resources are available at no cost to the user and are available on-demand via the LTAP website: [www.purdue.edu/intlap/](http://www.purdue.edu/intlap/)



MODULE 1: CONSTRUCTION PROGRAM OVERVIEW



MODULE 2: CONSTRUCTION PROJECTS OVERVIEW



MODULE 3: KEY COMPONENTS OF MS4 CONSTRUCTION PROGRAMS



MODULE 4: ORDINANCE & TECHNICAL STANDARDS



MODULE 5: STORMWATER POLLUTION PREVENTION PLANS



MODULE 6: PART 1: CONSTRUCTION BEST MANAGEMENT PRACTICES



MODULE 7: PART 2: CONSTRUCTION STRUCTURAL BEST MANAGEMENT PRACTICES



MODULE 8: SELF-MONITORING PROGRAM & THE PROJECT MANAGEMENT LOG



MODULE 9: VIRTUAL INSPECTION



MODULE 10: INSPECTIONS & ENFORCEMENT FOR MS4 INSPECTORS



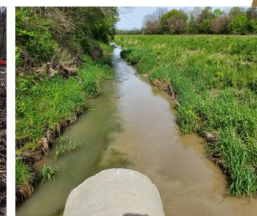
MODULE 11: CONCLUDING A CONSTRUCTION PROJECT



**MODULE 12: CONSTRUCTION STORMWATER WORKFORCE**

## Construction Program Training

### Module 12: Construction Stormwater Work Force



**PURDUE**  
UNIVERSITY®

Local Technical Assistance Program

The stormwater workforce must possess the skills and knowledge to implement erosion and sediment control protocols on construction sites. Module 12 is intended for a general construction stormwater audience, especially current or prospective stormwater professionals, individuals looking for training opportunities, and employers seeking individuals experienced in construction stormwater management.

Module 12 explores career pathways, necessary skills, and real-world applications of stormwater management. It highlights the various roles involved in construction site stormwater management, from academia and engineering to construction to regulations.



#### Learning Objectives of Training Module 12:

1. Recognize the need for more professionals proficient at construction stormwater management.
2. Understand the knowledge base and critical skills that are needed in the construction stormwater management field.
3. Identify potential roles within the construction stormwater management field.