

Quick facts on the LTAP MS4 Training Modules...

Module 10: Inspections & Enforcement for MS4 Inspectors

THE CONSTRUCTION MODULE TRAINING SERIES

To assist MS4 entities meet IDEM MS4 General Permit training requirements, LTAP has developed a series of MS4 Training Modules that cover the Construction Site Stormwater Runoff MCM of the IDEM MS4 General Permit (Section 4.5). Twelve modules have been created as part of the Construction Program Training series. These training resources are available at no cost to the user and are available on-demand via the LTAP website: www.purdue.edu/intlap/



MODULE 1: CONSTRUCTION PROGRAM OVERVIEW



MODULE 2: CONSTRUCTION PROJECTS OVERVIEW



MODULE 3: KEY COMPONENTS OF MS4 CONSTRUCTION PROGRAMS



MODULE 4: ORDINANCE & TECHNICAL STANDARDS



MODULE 5: STORMWATER POLLUTION PREVENTION PLANS



MODULE 6: PART 1: CONSTRUCTION BEST MANAGEMENT PRACTICES



MODULE 7: PART 2: CONSTRUCTION STRUCTURAL BEST MANAGEMENT PRACTICES



MODULE 8: SELF-MONITORING PROGRAM & THE PROJECT MANAGEMENT LOG



MODULE 9: VIRTUAL INSPECTION



MODULE 10: INSPECTIONS & ENFORCEMENT FOR MS4 INSPECTORS



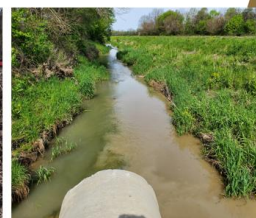
MODULE 11: CONCLUDING A CONSTRUCTION PROJECT



MODULE 12: CONSTRUCTION STORMWATER WORKFORCE

Construction Program Training

Module 10: Inspections & Enforcement for MS4 Inspectors



PURDUE
UNIVERSITY

Local Technical Assistance Program

MS4 inspectors must conduct construction site inspections in accordance with MS4 General Permit requirements and to implement and enforce their erosion and sediment control program developed as part of the construction site stormwater runoff MCM. The intended audience for Module 10 includes MS4 staff conducting construction site inspections, but the information is still beneficial for a general construction stormwater audience.

Module 10 provides an overview of inspection requirements that MS4 entities must implement, emphasizing the legal authority granted by ordinances. It covers key components of an inspection program, including compliance strategies, enforcement procedures, and the importance of follow-through to ensure stormwater regulations are met.



Learning Objectives of Training Module 10:

1. Understand regulatory authority granted by the stormwater ordinance.
2. Demonstrate effective regulatory inspection protocols, documentation, and follow-up.
3. Recognize the compliance and enforcement tools an MS4 has at its disposal.