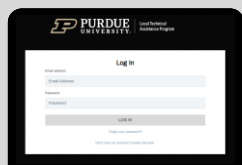


Quick facts on the LTAP MS4 Training Modules...

Module 3: Assess, Identify, and Evaluate Hazards

THE MS4 TRAINING MODULE SERIES

To assist MS4 entities meet their IDEM MS4 General Permit training requirements, LTAP has developed a series of MS4 Training Modules that cover Municipal Operations Pollution Prevention & Good Housekeeping (Section 4.7 of the IDEM MS4 GP). Six Training Modules have been created as part of this MS4 Pollution Prevention series (see list below). These training resources are available at no cost to the user and are available on-demand via the LTAP website: www.purdue.edu/intlap/



MODULE 1: BACKGROUND OF STORMWATER POLLUTION PREVENTION



MODULE 2: HOW TO IDENTIFY THE PROBLEM



MODULE 3: ASSESS, IDENTIFY, AND EVALUATE HAZARDS



MODULE 4: HOW TO CONTROL THE PROBLEM



MODULE 5: CLEANUP (WHAT DO I DO WITH THIS STUFF?)



MODULE 6: SPILL PREVENTION, CONTROL AND COUNTERMEASURE

Module 3:

Assess, Identify, and Evaluate Hazards



Local Technical Assistance Program

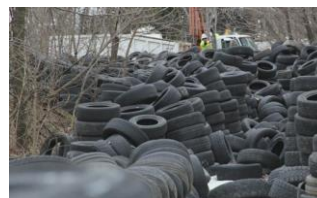
After learning pollution risk identification in Training Module 2, trainees will learn strategies for assessing, identifying, and evaluating hazards posed by the identified risks in Module 3. The identification and communication of potential hazards at facilities and across facility grounds are an important part of the Pollution Prevention and Good Housekeeping program. Measures should be taken to prevent an incident before it happens. The identification of hazardous products is key to proper management.

THERE ARE SEVERAL TYPES OF HAZARDS THAT REQUIRE ASSESSMENTS AND POLLUTION PREVENTION MEASURES

Petroleum Hydrocarbons (PCHs)



Used Materials



Liquid and Dry Chemicals



Electronic Waste



Paint and Paint Tools



Learning Objectives of Training Module 3 include:

1. Assessing potential hazards at MS4 facilities
2. Identifying practices to manage potential hazards
3. Evaluating proper handling and disposal of material