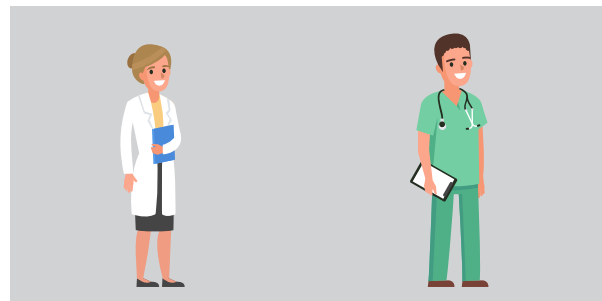


Center for Healthy Living



You are at the center of all we do!

The **Center for Healthy Living (CHL)** has a team of providers available to offer you quality care. Experienced physicians and nurse practitioners make up your clinical CHL team. Here's a comparison of the clinical team by position so you can understand a little more about the healthcare workers collaborating to provide you care.



	Physician	Nurse Practitioner
Postsecondary education and training	✓	✓
Licensed by state licensing board	✓	✓
Orders/interprets labs and diagnostic tests	✓	✓
Diagnoses and treats health conditions	✓	✓
Maintains detailed patient records	✓	✓
Emphasizes preventive care and health promotion	✓	✓
Prescribes medications	✓	✓
Maintains quality patient-centered care	✓	✓