

## Department of Horticulture

Purdue University Cooperative Extension Service • West Lafayette, IN

### New Plants from Cuttings (*Figures*)

*Mary Welch-Keesey and B. Rosie Lerner\**

*Note: The figures in this publication are references for HO-37: "New Plants from Cuttings," available at <http://www.hort.purdue.edu/ext/HO-37.pdf>.*



**Figure 1:** *Herbaceous and softwood: cutting below a node*



**Figure 2:** *Herbaceous and softwood: trimmed shoot tip*



**Figure 3:** *Herbaceous and softwood: checking for roots*



**Figure 4:** *Hardwood: cutting below a node*



**Figure 5:** *Hardwood: 2-inch mark*



**Figure 6:** *Hardwood: wounding*



**Figure 7:** *Needled evergreen: trimmed needles*



**Figure 8:** *Needled evergreen: wounding*



**Figure 9:** *Cane: Dieffenbachia bud and roots*



**Figure 10:** *Cane: Dieffenbachia segments placed vertically*





**Figure 11:** Leaf-bud: rooted cutting



**Figure 12:** Leaf petiole: leaf blades stuck in medium



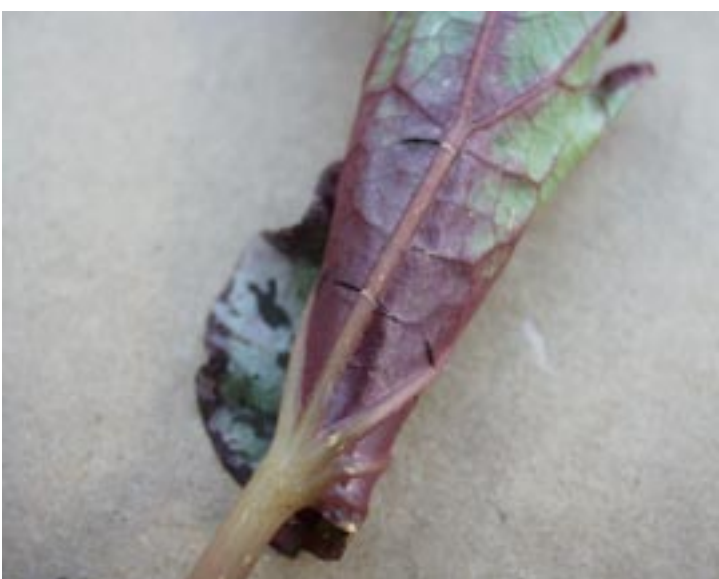
**Figure 13:** Leaf petiole: rooted cutting with plantlets



**Figure 14:** Leaf blade: succulent leaves with no petioles



**Figure 15:** Leaf blade: succulent leaf with plantlets



**Figure 16:** Leaf blade: major veins cut on Rex begonia





**Figure 17:** Leaf blade: Rex begonia leaf pinned flat



**Figure 18:** Leaf blade: Rex begonia leaf rolled and stuck in medium



**Figure 19:** Leaf blade: Rex begonia leaf with plantlets



**Figure 20:** Leaf blade: separating Rex begonia plantlets



**Figure 21:** Leaf section: rooted and growing Sansevieria section

*\*Janie Nordstrom Griffiths assisted in the preparation of this publication.*

---

For more information on the subject discussed in this publication, consult your local office of the Purdue University Cooperative Extension Service.

---

It is the policy of the Purdue University Cooperative Extension Service, David C. Petritz, Director, that all persons shall have equal opportunity and access to programs and facilities without regard to race, color, sex, religion, national origin, age, marital status, parental status, sexual orientation, or disability. Purdue University is an Affirmative Action employer. This material may be available in alternative formats. <http://www.agcom.purdue.edu/AgCom/Pubs/menu.htm>