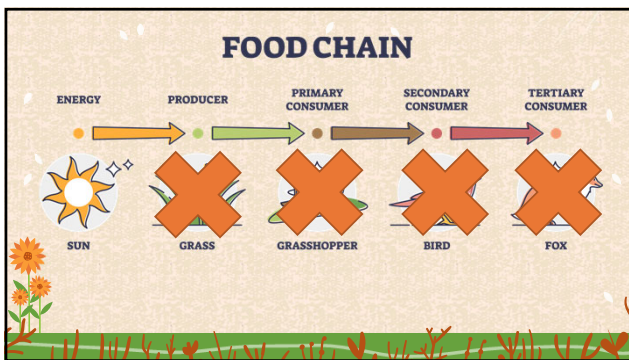


**PURDUE UNIVERSITY** Horticulture and Landscape Architecture

## WILD by DESIGN: The Art of Gardening for Wildlife

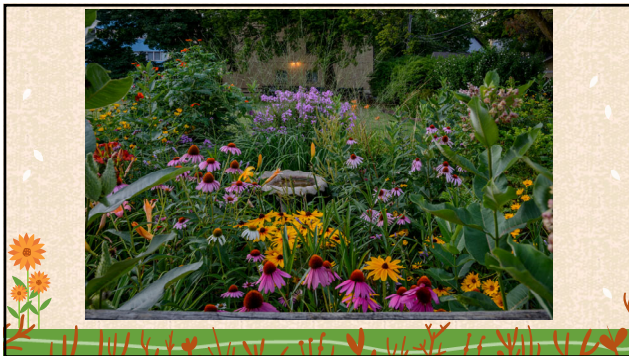
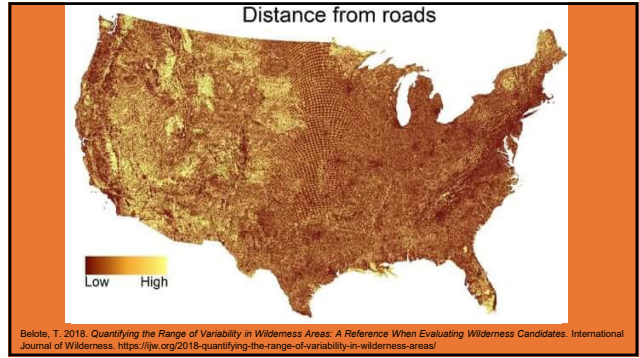
Karen Mitchell  
Home Horticulture Extension Specialist  
Dept. of Horticulture & Landscape Architecture  
Purdue University

## WHY WILDLIFE?



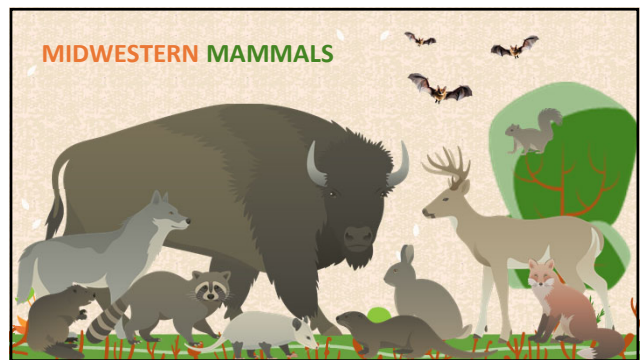
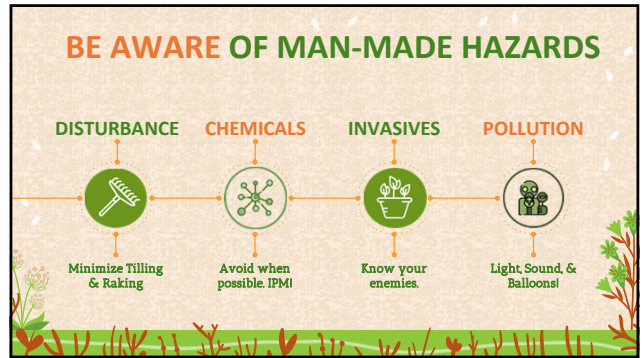
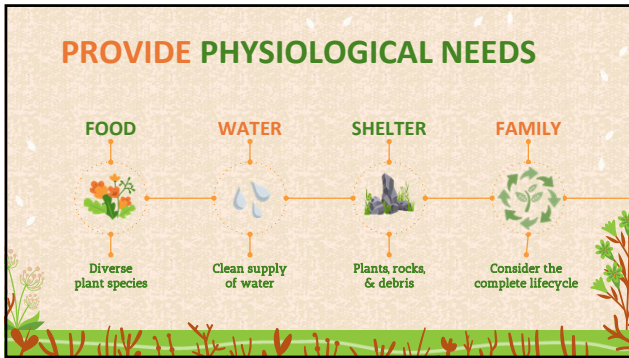
## BUT WHY MY YARD?

*“O fortunatos nimium, sua si bona norint,  
agricolas! quibus ipsa procul discordibus  
armis fundit humo facilem victum  
iustissima tellus...” - Virgil 40 BC*

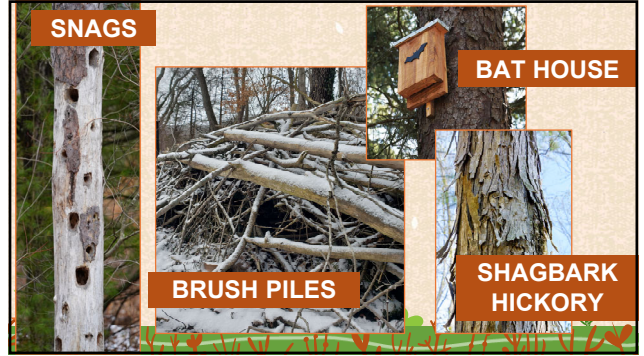
The Purdue University logo, featuring a stylized "P" and the text "PURDUE UNIVERSITY", is located in the top left corner. Below the logo, the text "Horticulture and Landscape Architecture" is written. The main title "MAIN COMPONENTS" is centered in large, bold, orange letters. The slide is decorated with a textured beige background, a green grassy base with small red flowers, and stylized illustrations of trees and plants in the corners.

PURDUE UNIVERSITY Horticulture and Landscape Architecture

MAIN COMPONENTS







**MIDWESTERN BIRDS**

- Over 300 species
- Seasonal vs. Year-round

**Cornell Lab**  
**Merlin**

Merlin.AllAboutBirds.org

**MIDWESTERN REPTILES**

- Turtles
- Lizards
- Skinks
- Snakes

### MIDWESTERN AMPHIBIANS

- Hellbender & Mudpuppy
- Salamanders
- Toads & Frogs





### INVERTEBRATES



### MIDWESTERN BUGS & BUTTERFLIES

- Butterflies > 95 species
- Skippers > 50 species
- Native Bees > 430 species
- Moths > 478 species
- Beetles, Snails, Spiders, Worms, Flies...



### MIDWESTERN BUGS & BUTTERFLIES





**P PURDUE UNIVERSITY** Horticulture and Landscape Architecture

# PLANTING FOR WILDLIFE



## UTILIZE LAYERS



## CONSIDER BLOOM TIME



## INCREASE BIO-DIVERSITY










**INPS**  
**Indiana**  
**Native**  
**Plant**  
**Society**

A resource for everything about Indiana native plants. Offers education and certification opportunities.

[IndianaNativePlants.org](http://IndianaNativePlants.org)



**HNP**  
**Homegrown**  
**National**  
**Park**

A grassroots call-to-action to regenerate biodiversity and ecosystem function by planting native plants and creating new ecological networks.

[HomegrownNationalPark.org](http://HomegrownNationalPark.org)



**TICT**  
**Tippecanoe**  
**Invasive**  
**Cooperative**  
**Taskforce**

Reach out to your local SWCD or the State of Indiana Cooperative Invasives Management (SICIM) to learn more about CISMAs.

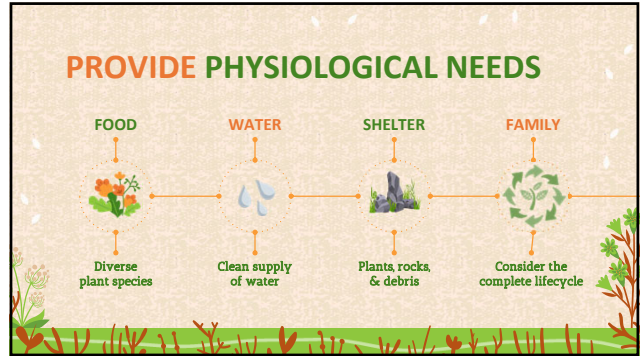
[www.sicim.info](http://www.sicim.info)

"We lose so much when we remove leaf litter because it provides so many free services for us: free mulch, free fertilizer, free weed control, and free soil amendments."

**—Douglas W. Tallamy:**  
**Bringing Home Nature**



What is your...  
Why?  
Who?  
Where & How?



**PURDUE UNIVERSITY** Horticulture and Landscape Architecture

**THANKS!**

Any questions?

Karen Mitchell  
mitcheka@purdue.edu

@PurdueHomeHort

**Scan for Resources:**

**Photos:**

- Figure with four datasets as measures of wilderness character across United States: <https://ijw.org/2018-quantifying-the-range-of-variability-in-wilderness-areas/>
- Adobe Stock licensed photos on Slide 5, 6, 8, 15, 16, 17, 18, 24.

**Research:**

- Tallamy, D.W. 2020. *Bringing Nature Home* Timber Press.
- Xerces Society. 2014. *Farming with Native Beneficial Insects* Storey Publishing.