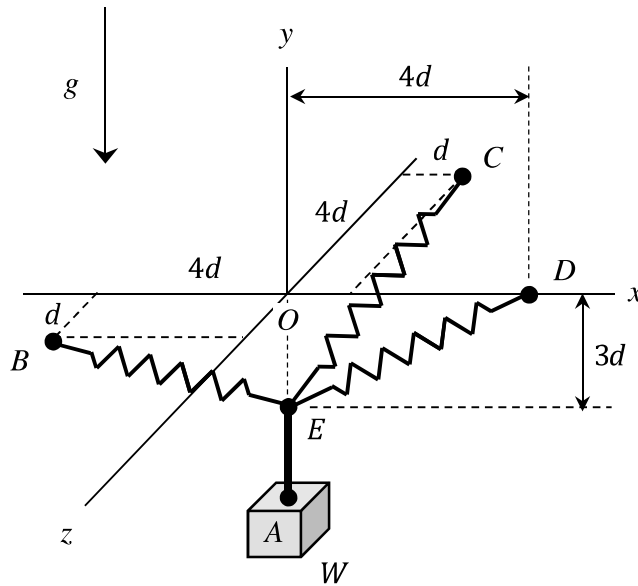


Homework H5.A

Given: Block A, having a mass of W , is supported by springs EB, EC and ED, with each spring having a stiffness of k . Note that all three points B, C and D lie in the xz -plane, with D on the x -axis. Point E lies on the negative y -axis.

Find: Determine the unstretched length of each spring. Express your answers in terms of W , k and d .



Homework H5.B

Given: A light fixture, having weight of W , is supported by three cables: AC, BC and DC.

Find: Determine the tension in each cable. Leave your answers in terms of the light fixture weight W .

