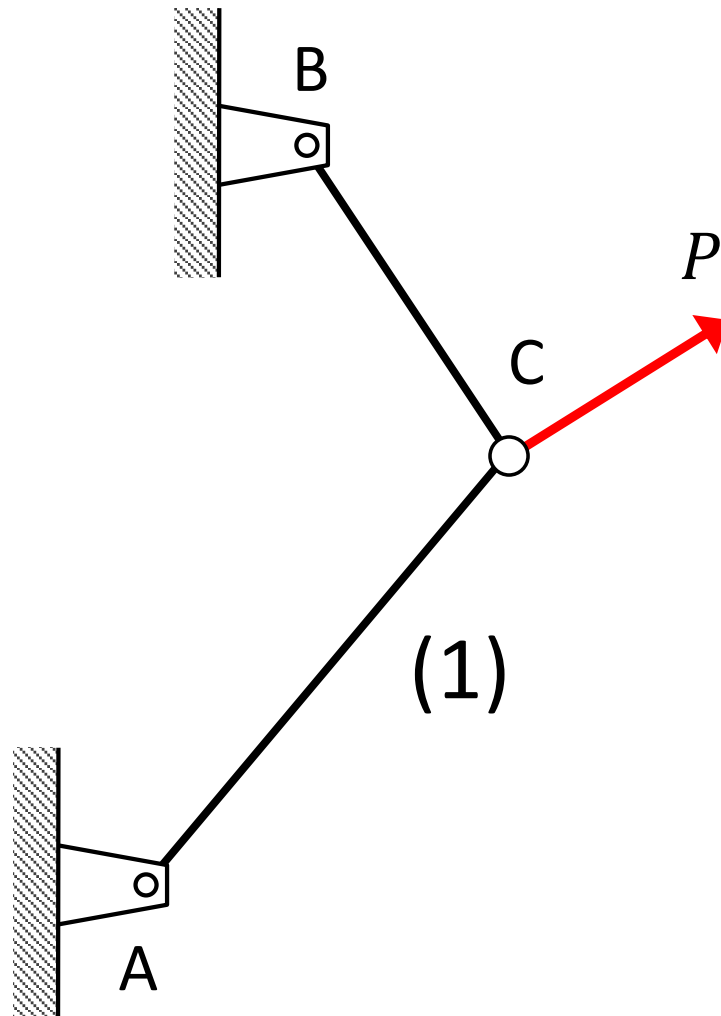


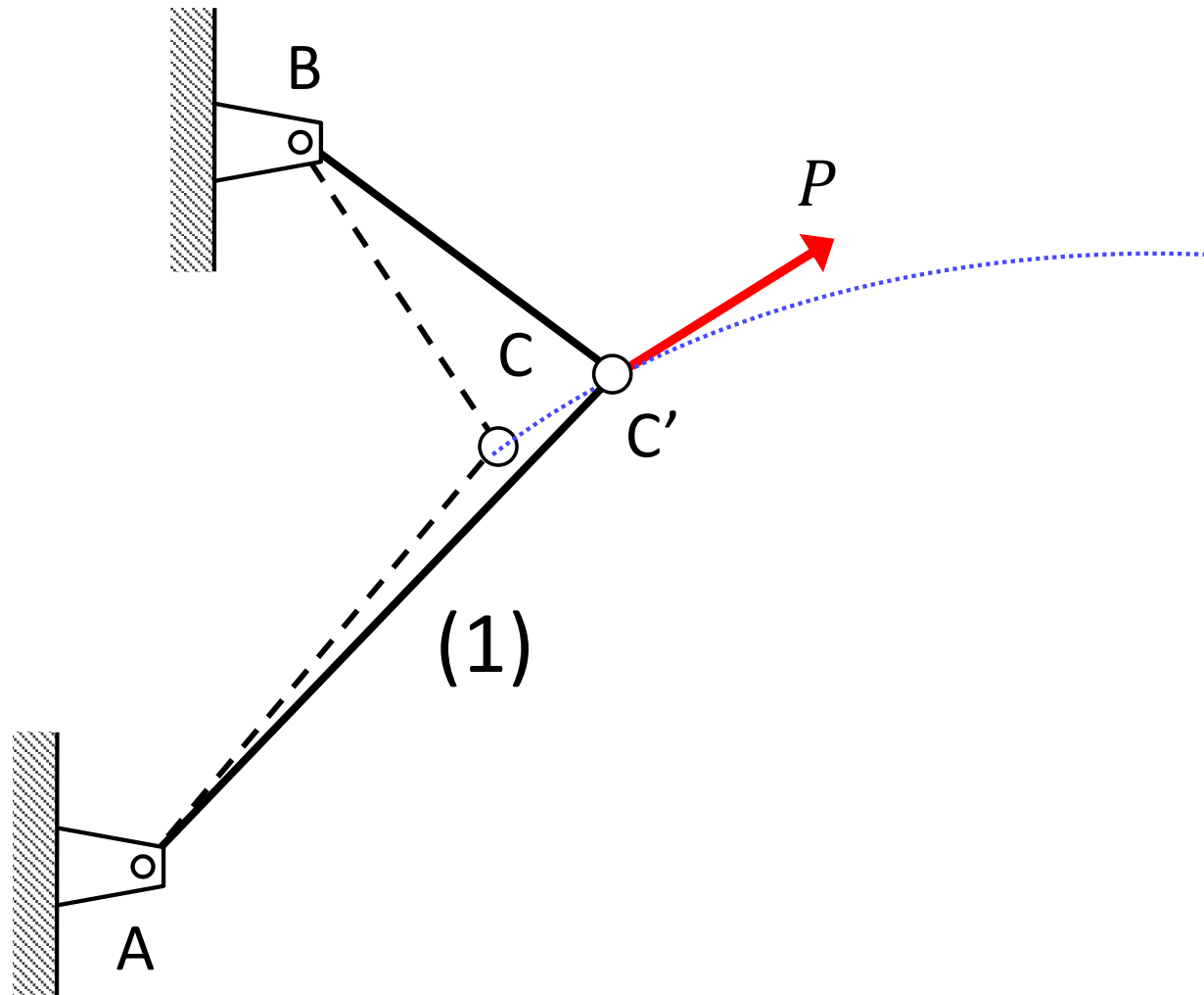
Truss deformations

(displacements exaggerated for demonstration purpose)



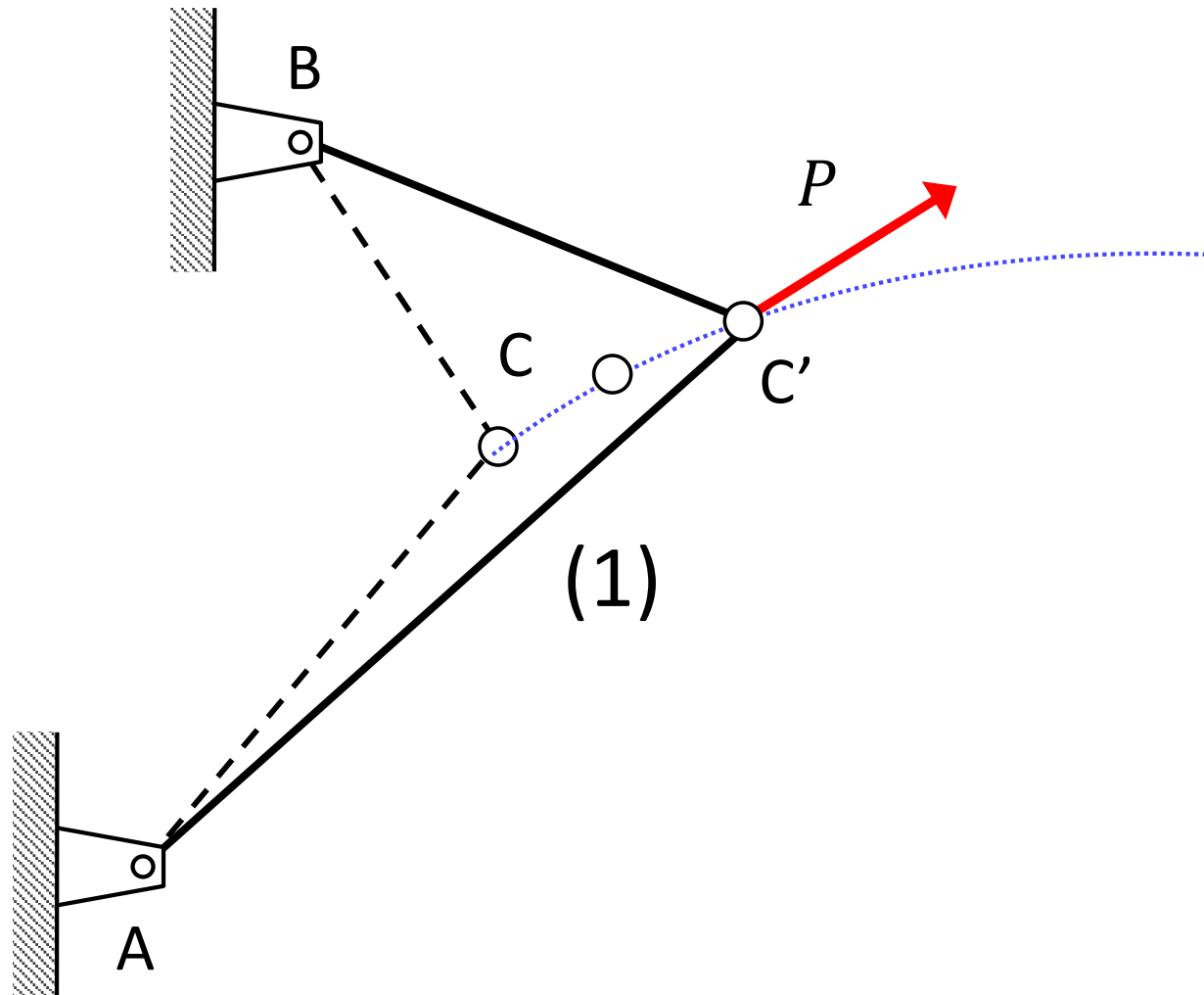
Truss deformations

(displacements exaggerated for demonstration purpose)



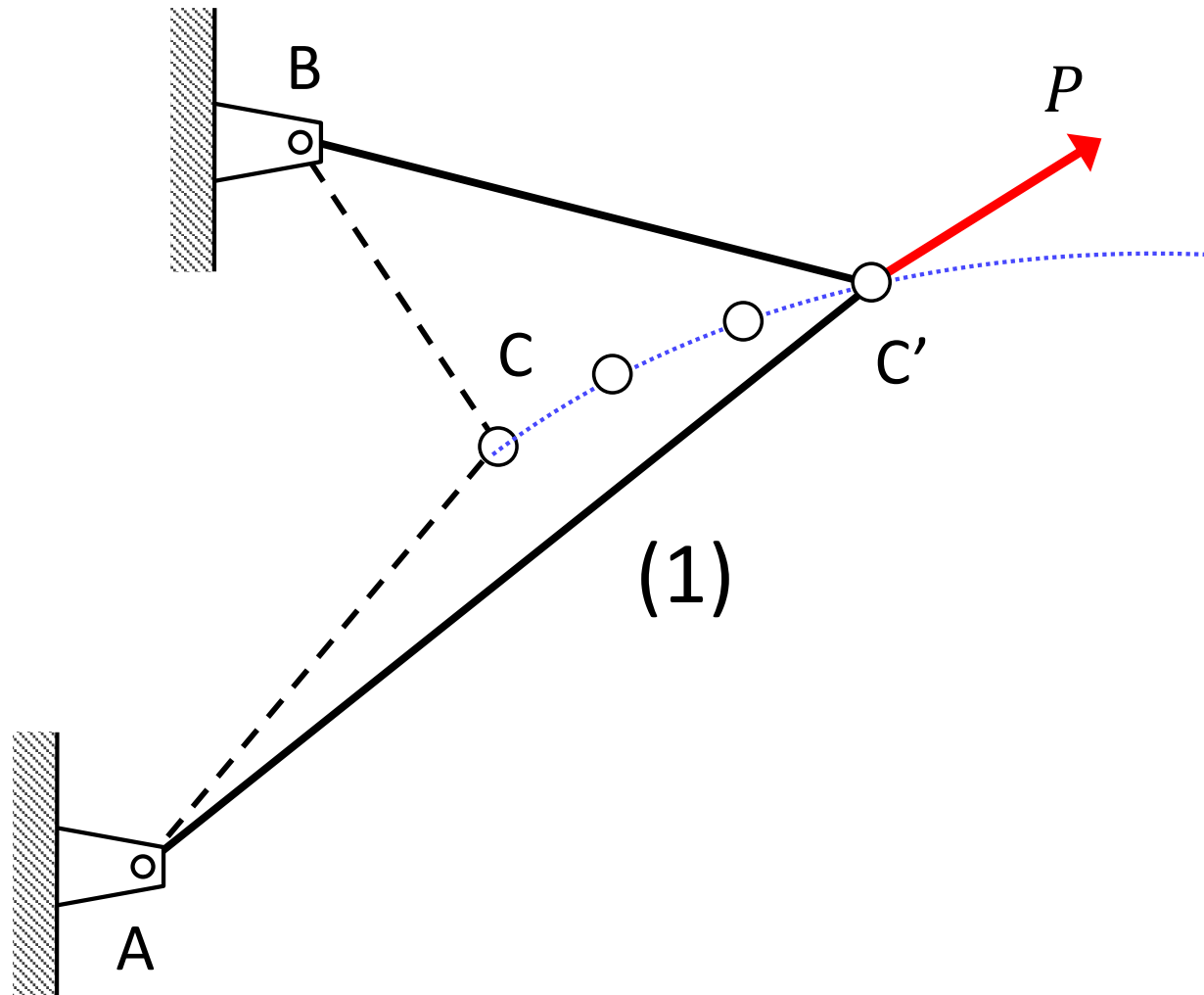
Truss deformations

(displacements exaggerated for demonstration purpose)



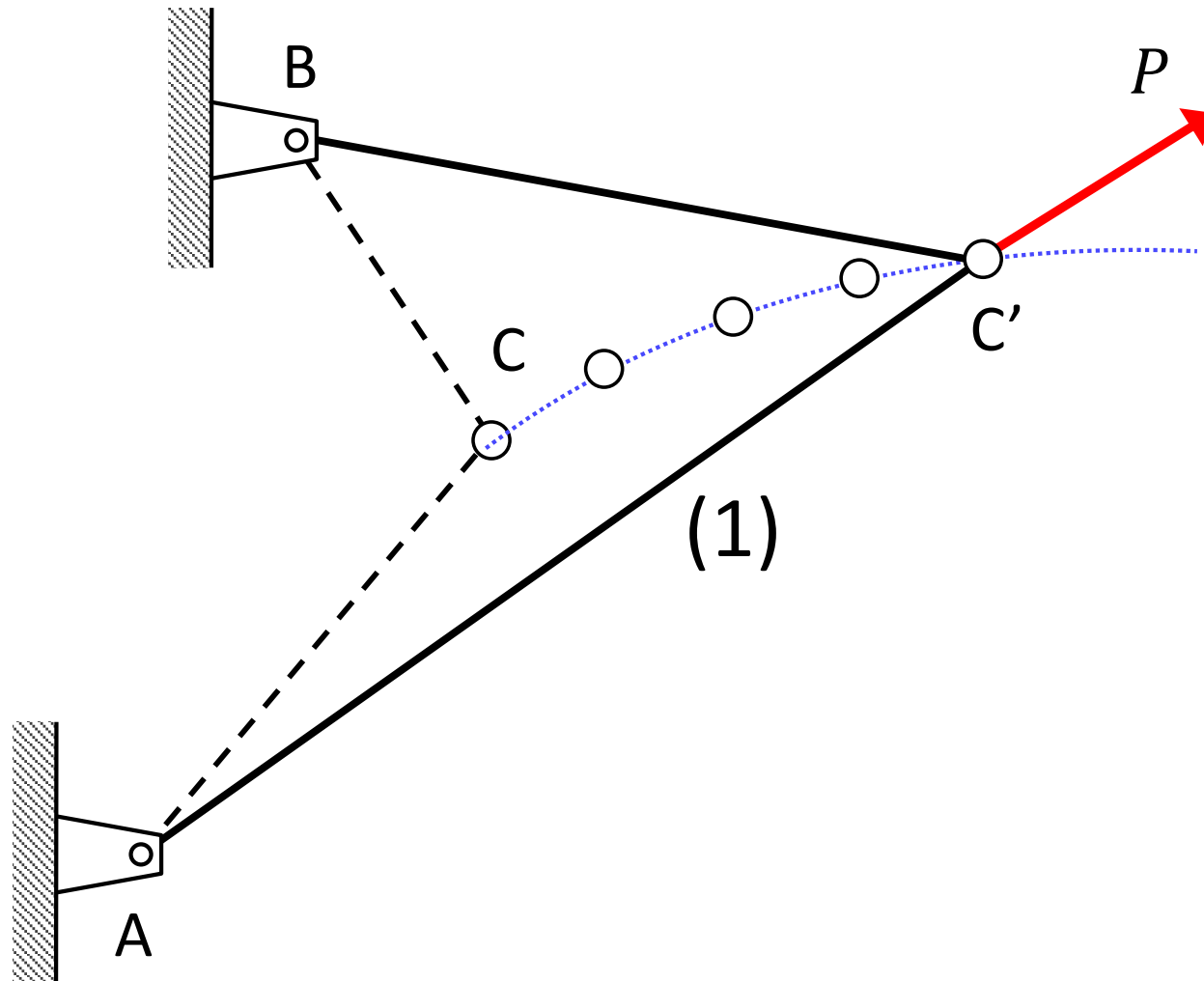
Truss deformations

(displacements exaggerated for demonstration purpose)



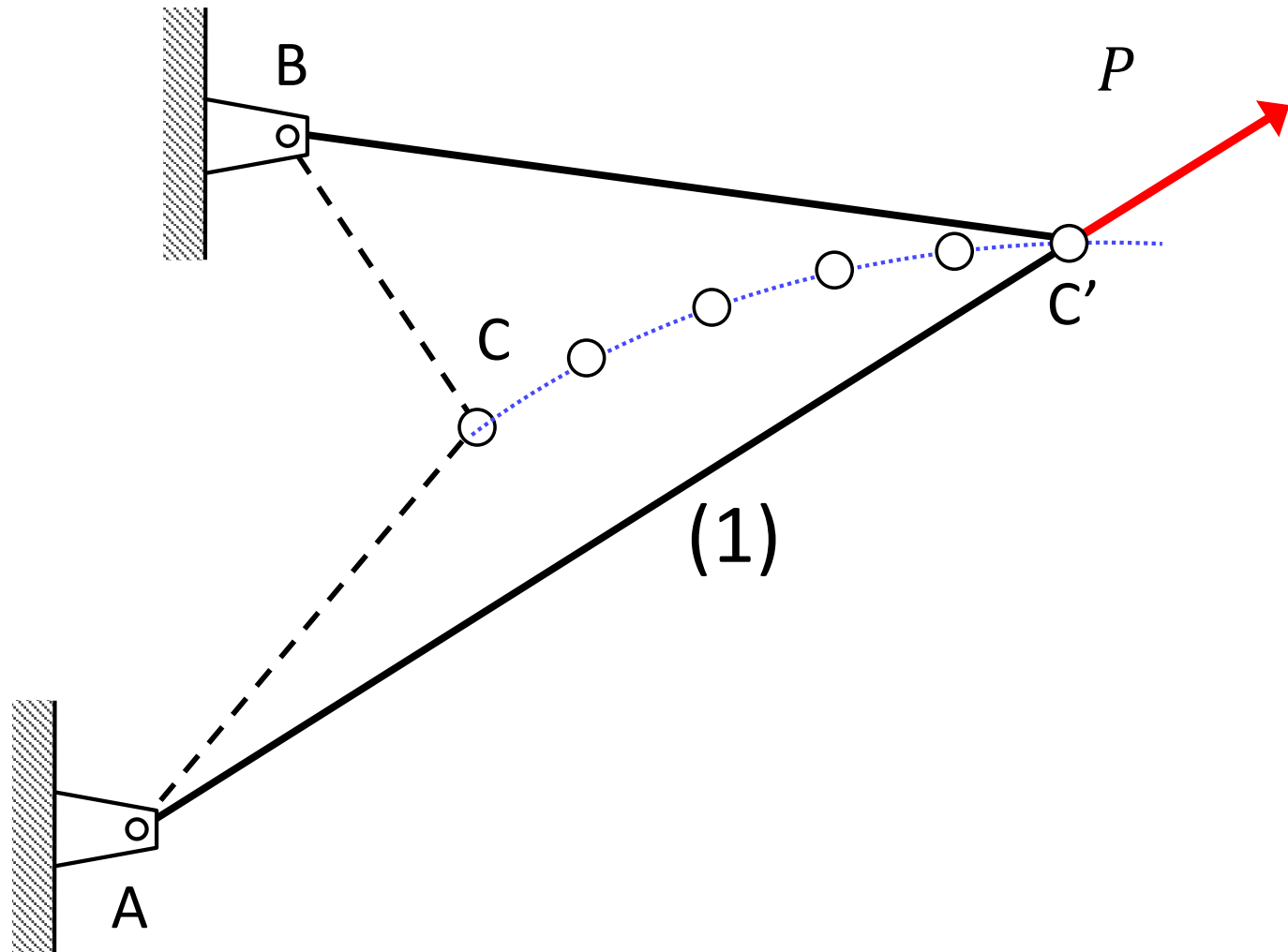
Truss deformations

(displacements exaggerated for demonstration purpose)



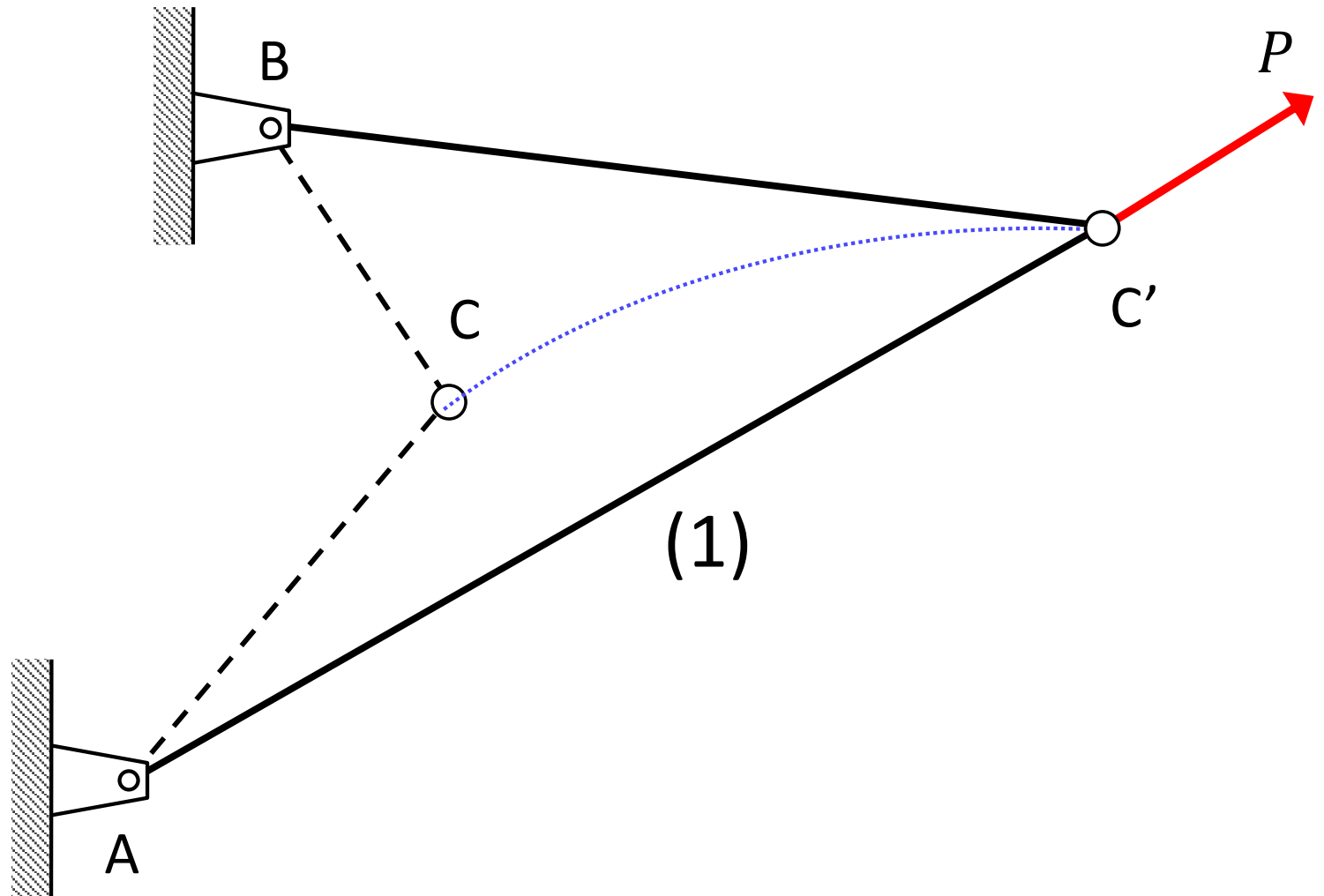
Truss deformations

(displacements exaggerated for demonstration purpose)

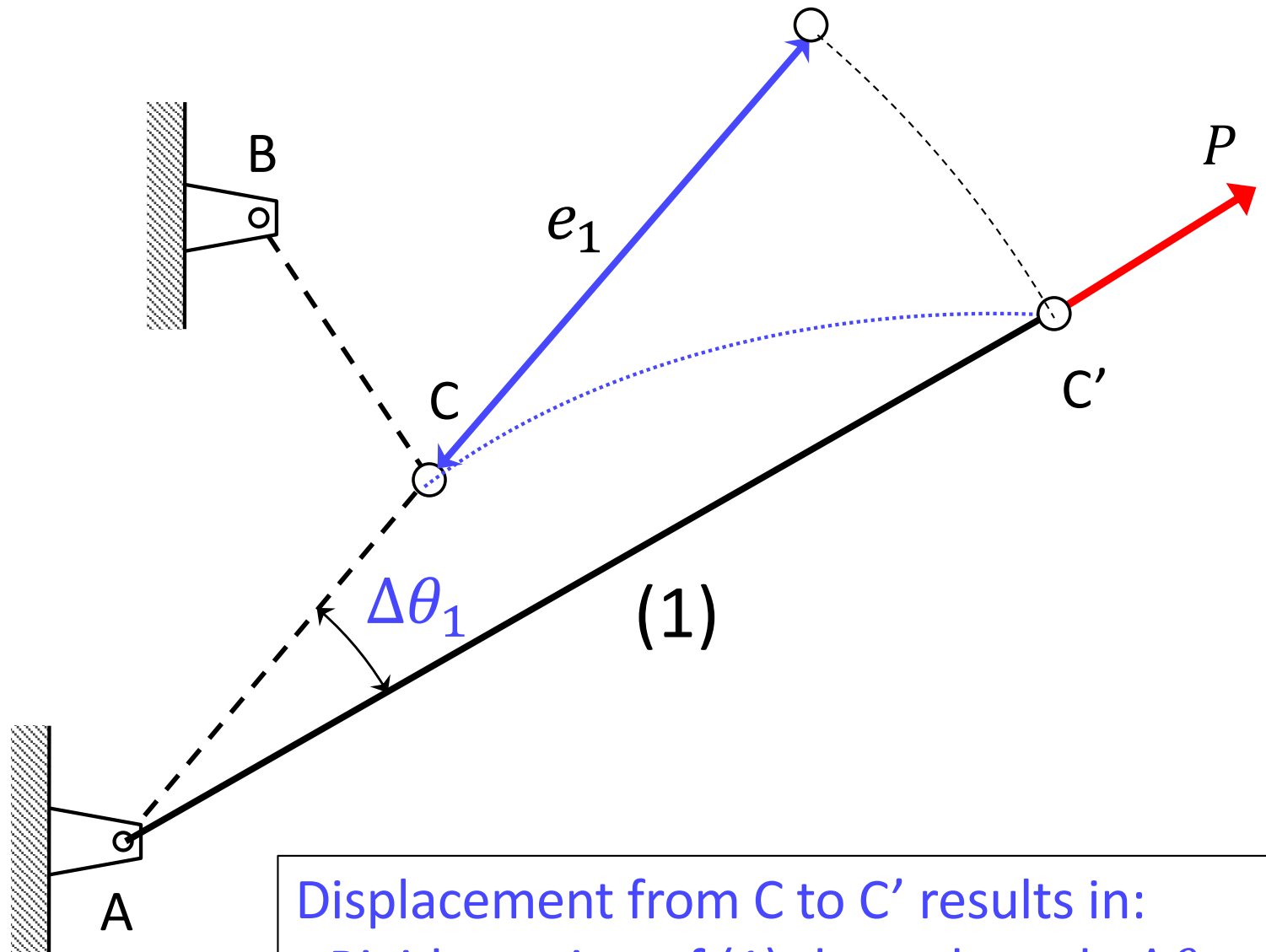


Truss deformations

(displacements exaggerated for demonstration purpose)



Truss deformations



- Displacement from C to C' results in:
- Rigid rotation of (1) through angle $\Delta\theta_1$
 - Elongation of (1) by an amount of e_1