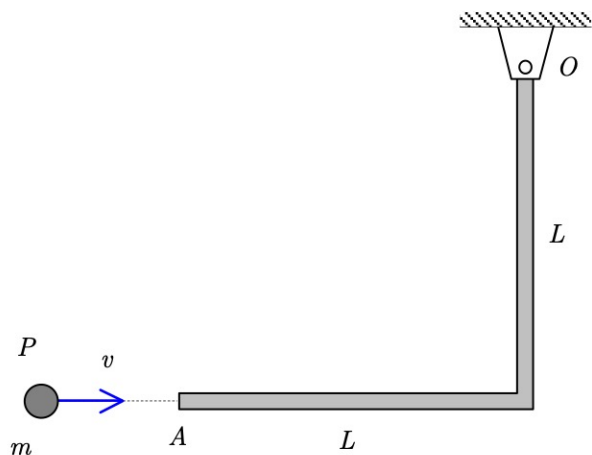


Homework H.5.L

Given: Particle P (of mass m) strikes end A of a stationary homogeneous L-shaped bar (of mass M) with a speed of v . The coefficient of restitution for the impact of P with end A of the bar is known to be e .

Find: Determine the angular speed of bar OA immediately after the impact.

***HORIZONTAL PLANE***

Use the following parameters in your analysis: $M = 30$ kg, $m = 10$ kg, $L = 2$ m, $v = 40$ m/s and $e = 0$.