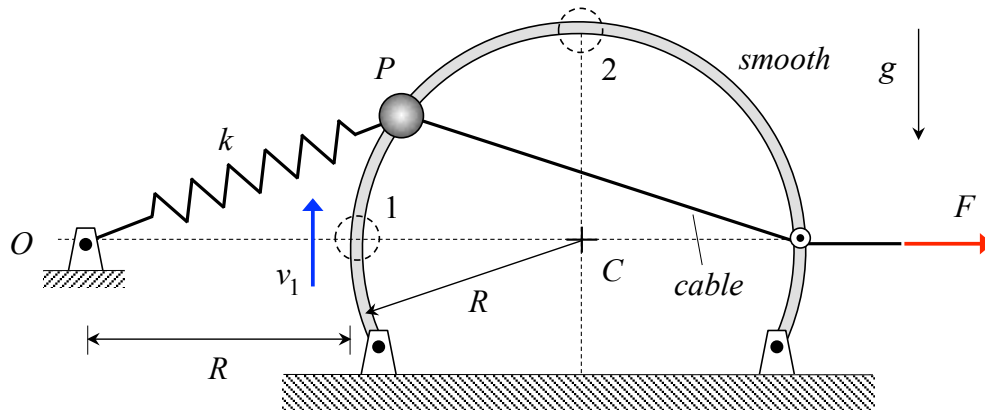


**Homework H4.V**

**Given:** A particle P of mass  $m$  is able to slide along a smooth circular arc guide. A spring (of stiffness  $k$  and unstretched length  $R$ ) is attached between P and the fixed pin O. An inextensible cable is attached to P with a constant force  $F$  being applied at the free end of the cable. When P is at position 1, it is traveling with a speed of  $v_1$ .

**Find:** Determine the speed of P when it reaches position 2.



Leave your answer in terms of, at most:  $m$ ,  $g$ ,  $R$ ,  $F$ ,  $v_1$  and  $k$ .