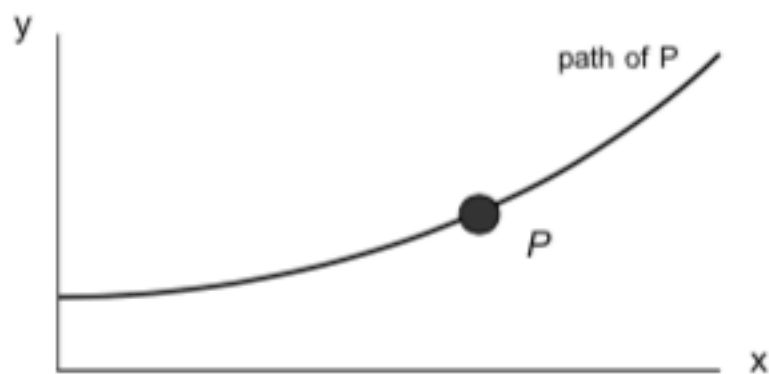


Given: Particle P moves within the x - y plane on a path described by $y(x) = 2\sqrt{4x^2 + 12}$ where both x and y are given in feet.

Find: Determine the acceleration of P. Write your answer as a vector in terms of its x - y components.



Use the following parameters in your analysis: $x = 2$ ft, $\dot{x} = -10$ ft/s and $\ddot{x} = 0$.