

SD 21-22

DEFINING AN ACADEMIC EMERGENCY

FOR DISCUSSION -- 2/21/22

Educational Policy Committee
University Policy Resources Committee

Alice Pawley, apawley@purdue.edu



COVID showed us a grave need

We were building the plane as we flew it

- Suspension of normal academic operations
- Switch mode of instruction over spring break to online instruction
- Changes to the academic calendar
- Changes to educational policy – pass/no pass, withdraw/drop dates
- Automatic tenure clock extensions for one year
- Suspension of normal teaching evaluations for a term
- Changed expectations acknowledging working while caregiving
- Suspension of S-19 of instructional intellectual property on courseware and online modules for materials moved online due to COVID (and later quietly retracted)
-

Existing relevant policies and plans

- Integrated Emergency Management Plan
 - <https://www.purdue.edu/ehps/emergency-preparedness/emergency-plans/iemp.php>
 - Operation of campus facilities if necessitated by emergencies “initiated by natural and human-caused disaster.”
 - Reviewed annually
 - Managed by Environmental Health & Public Safety Office (Carol Shelby, Director)

Existing relevant policies and plans

- Communicable Disease Emergencies and Pandemics (Policy IV.A.8)
 - Developed during COVID – July 2020, permanent in December 2020
 - Focused on public health emergencies only
 - Delegates academic decisions:
 - at PWL to the Provost in consultation with “other University Officers and academic leadership” (latter undefined)
 - At regional campuses to chancellors and “university designated subject matter advisors”
 - No mention of Purdue Global, even though they have a Senate, academic leadership, and “subject matter experts”

These policies do not cover our needs

- Integrated Emergency Management Plan
 - Well-developed, process for annual reassessment and revision, clear delegation of authority based on areas of responsibility
 - But focused on physical facilities
- Communicable Disease Emergencies and Pandemics (Policy IV.A.8)
 - Focused on health emergencies only
 - Delegation of authority outside of areas of responsibility on academic matters despite norms of shared governance still applying “in exigent times as in more tranquil times”

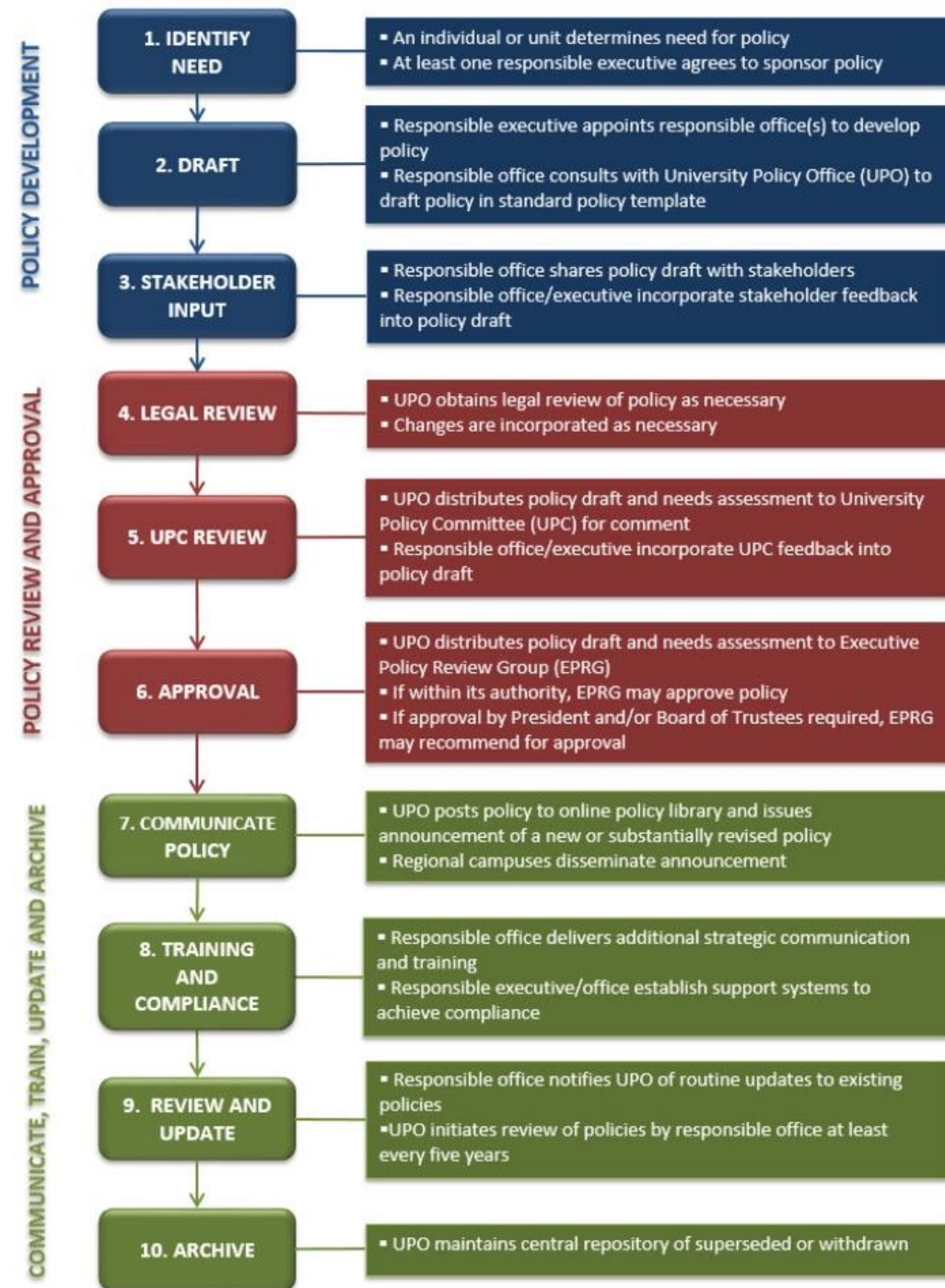
SD 21-22

Develop a systemwide policy around academic emergencies that

- Is not limited to health emergencies (includes natural disasters, labour emergencies)
- recognizes shared governance norms are still valuable in times of emergency, including at regional campuses and Purdue Global
- Emphasizes transparency in who makes what changes
 - “Consultation” should include at minimum MAPSAC chair, CSSAC chair, University Senate chair
- Time-bounds a declaration so emergency conditions sunset out without a re-declaration
- Policy should come back to the University Senate and regional Global Senates before going to Executive Policy Review Group

Calling for a policy, rather than writing the policy

- <https://www.purdue.edu/policies/process.html>



Comments, questions, suggestions

Please email me at apawley@purdue.edu with specifics