

PURDUE
UNIVERSITY®

*Office of the Provost
Strategic Agenda
Enrollment Management Forum*

**Jay Akridge
Provost and Chief Diversity Officer**

MAY 8, 2018



FALL 2018 ENROLLMENT

Projected 7800, predicting approximately 8300

- Increased out of state yield
- Increase in number of Indiana residents
- Virtually every College up, largest increases in Education, Engineering, Science (not Computer Science), Polytechnic

Will be making short-run/long-run investments to support growth

Shorter Term:

- New advisors and TAs, Visiting Faculty
- Student support services
- Targeted investments this year in Computer Science, Management, Enrollment Management, Student Life (Crisis Management)

Longer term:

- Two new residence halls
- New STEM Teaching Lab Building
- Expanded Wiley Dining Court

FALL 2018 ENROLLMENT

Projected 7800, predicting approximately 8300

- Increased out of state yield
- Increase in number of Indiana residents
- Virtually every College up, largest increases in Education, Engineering, Science (not Computer Science), Polytechnic

Will be making short-run/long-run investments to support growth

Shorter Term:

- New advisors and TAs, Visiting Faculty
- Student support services
- Targeted investments this year in Computer Science, Management, Enrollment Management, Student Life (Crisis Management)

Longer term:

- Two new residence halls
- New STEM Teaching Lab Building
- Expanded Wiley Dining Court

Our thanks for all you did to build class and all you will do to insure they have a positive experience.

21ST CENTURY LAND-GRANT UNIVERSITY...

Climate of Respect and Inclusion

Excellence and
Innovation

Access and
Success

Affordability

EDUCATIONAL ECOSYSTEM

GOALS

- ✓ Support and grow major programs that produce data science experts
- ✓ Create opportunities for Purdue students from any major to graduate with experience in solving real data science problems relevant to their domain area
- ✓ Aspire that all Purdue students will be data literate / fluent

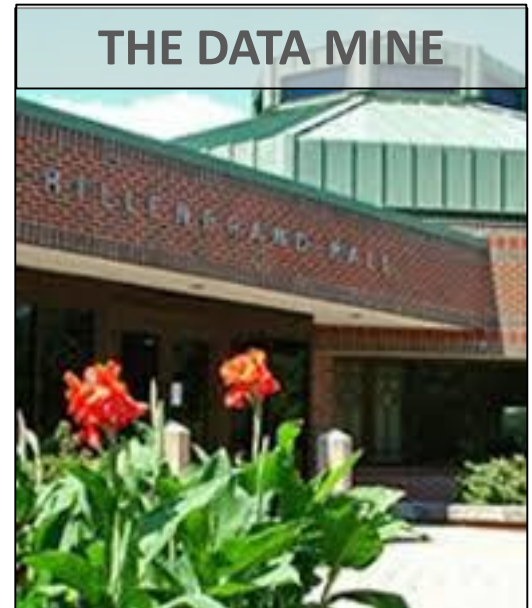


Purdue will be known as the place to go for a diverse talent pool of data scientists and data-competent students

EDUCATIONAL ECOSYSTEM

Data Science Living Learning Communities @ Residence Hall scale

- Students in living learning communities working on data-driven projects
- Themes connect to all colleges, domains
- Open to all majors, all years
- Faculty-led research projects
- Industry driven projects
- Welcoming and diverse culture
- Data Mine in Hillenbrand Hall 2018-19
- Partner: Residential Academic Initiatives



EXCELLENCE AND INNOVATION: 150TH ANNIVERSARY PROFESSORS



TEACHING AND LEARNING EXCELLENCE INITIATIVE

- **Build a culture supporting great teaching and high impact learning**
 - Teaching Evaluation Task Force
 - 150th Anniversary Professors
 - P&T/Mentoring Requirement
 - Recognizing Teaching in P&T
 - Faculty Development
 - ...
- **Define great teaching/high impact learning at an R1 university**
 - Gen Z and Implications for Purdue
 - Defining the Purdue Residential Learning Experience
 - Resourcing Great Teaching – Teaching and Learning Portal
 - ...
- **Promote undergraduate professional skill development across campus**
 - Potential to Make Purdue a National Leader in Area
 - Substantial Growth in Undergraduate Research
 - College to Career: Internships, Study Abroad, Leadership Development Initiative...

10 listening sessions aimed at defining this initiative

EXCELLENCE AND INNOVATION FOR 150 YEARS



- Giant Leaps in Space
- Giant Leaps in AI, Algorithms and Automation
- Giant Leaps in Health, Longevity and Quality of Life
- Giant Leaps to a Sustainable World

ACCESS AND SUCCESS: PROGRAMS FOR STUDENT SUCCESS

- IMPACT — Instruction Matters: Purdue Academic Course Transformation
- Summer Start/Stay/Finish
- Summer offerings of DWF classes
- Advising Initiative
- Supplemental Instruction
- Peer Success Coaching
- Purdue Promise
- Etc. ...

AND MANY MORE!



ACCESS AND SUCCESS NEW INITIATIVE: BOILER SUCCESS TEAM

Bringing attention and action to issues that drive the academic and career success of all Purdue undergraduate students.

- *Through the students' eyes...*

Our view ...



... a student's view



STRATEGIC GROWTH ASSESSMENT

How many undergraduate students should we enroll at West Lafayette in the future?

- Majors with increasing application pools
- Majors with flat pools today, but growth aspirations

What are the constraints to growth?

- Housing and food services, labs, classrooms, etc.
- Major courses
- Support courses
- Academic student support services (advising, CCO, DRC, tutoring, ...)
- Other student support services (PUSH, mental health, Co-Rec, etc.)
- Other areas: scholarships, rankings (student/faculty ratios, etc.)

What are other issues to consider as we grow?

- Undergraduate population demographics
- Overall student experience

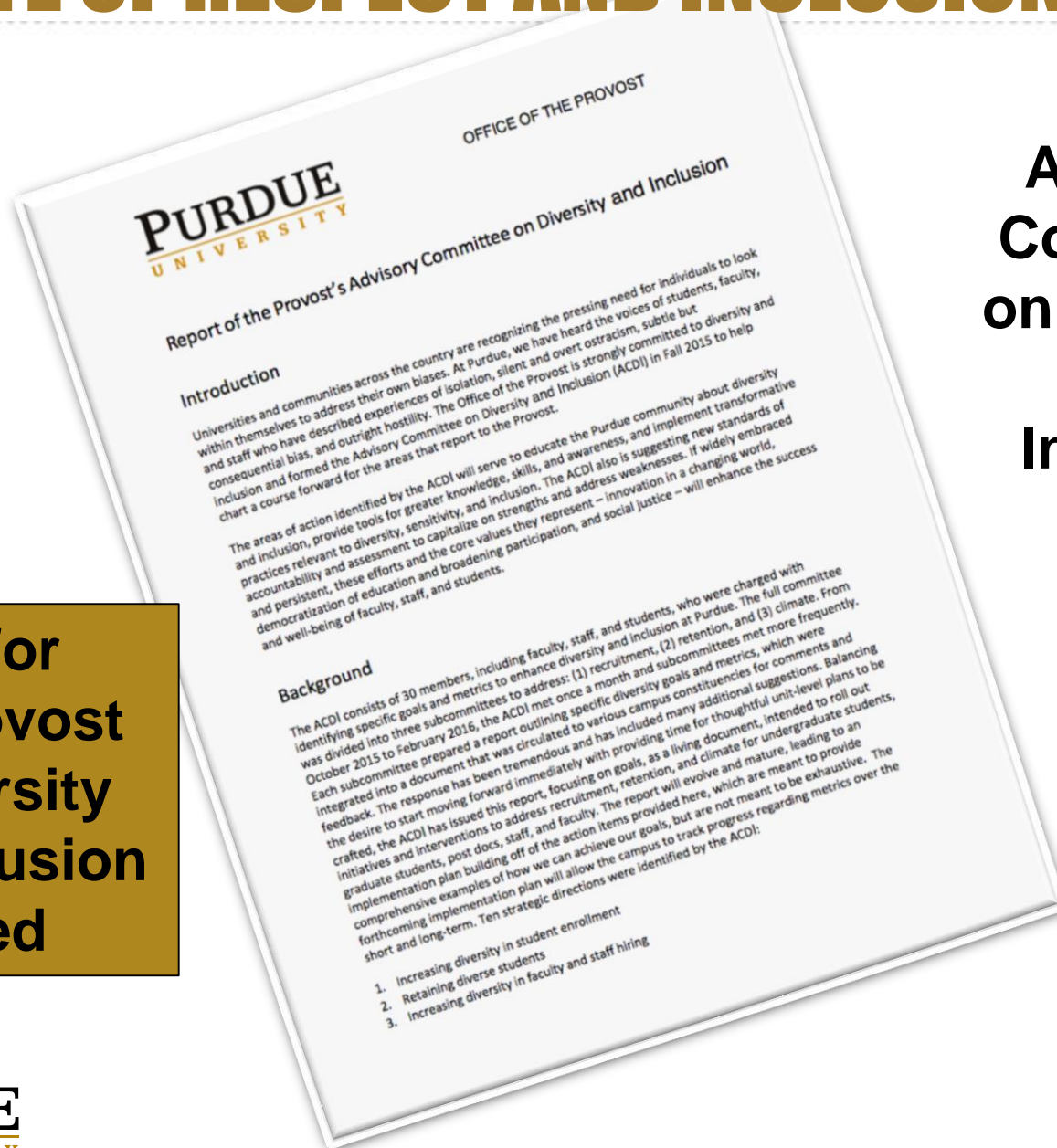
DIGITAL EDUCATION

- Launched Purdue Global — April 2
 - 634 completed intake forms from Purdue employees (as of May 5, 2018)
- Gerry McCartney leading development of Purdue GOLD
 - Gerry developing business plan, structure, cultivating B2B relationships
 - Provost Office working on academic approval process, sorting out conflicts, etc.
- Accumulating ideas for partnerships between Purdue West Lafayette and Purdue Global

CLIMATE OF RESPECT AND INCLUSION

Advisory Committee on Diversity and Inclusion

Search for Vice Provost for Diversity and Inclusion Launched



Welcome to 'New' Deans



Eric Barker
Pharmacy



Mung Chiang
Engineering



Patrick Wolfe
Science

FY 18

FY 19



Marion Underwood
HHS

- **Education**
- **Agriculture**
- **Graduate School**
- **Libraries**

PURDUE
UNIVERSITY®



William Goetz Cooper, Purdue University