



Purdue University

Agricultural Safety and Health Program

1998 Indiana Farm Fatality Summary

Compiled by the Purdue University Agricultural Safety and Health Program

Agricultural and Biological Engineering Department
Purdue University

For additional information contact:

Aaron M. Yoder at (765) 494-5088, or Dr. Bill Field at (765) 494-1191

The 1998 farm fatality report was compiled by the Purdue Agricultural Safety and Health Program through a variety of sources, including news reports, and personal interviews. In 1998 no cases were identified with the assistance of the Indiana Fatality Assessment and Control Evaluation (FACE) Program at the Indiana State Department of Health, which documents occupational fatalities identified through coroners' reports, as well as news articles and on-site investigations. Purdue data were compared with work-related fatality data compiled by the Indiana Department of Labor through the Census of Fatal Occupational Injuries program.

The report includes 16 farm work-related fatalities¹ that occurred in 1998. This is the lowest number of reported fatalities in the 50 year history of Purdue's farm injury reporting efforts. The average age of 1998 farm fatality victims was 66 (Table 1). No fatalities were identified involving children and adolescents under the age of 17 as compared to some years in the past when over 20% involved this age group. A large proportion (75%) of the recorded fatalities resulted from incidents involving tractors (Figure 1). Overturns of tractors not equipped with ROPS remains the leading cause of farm work-related fatalities. Table 2 summarizes the types of incidents associated with Indiana's 1998 farm fatalities.

¹ A **farm work-related fatality** is defined as any fatal injury to a farm or ranch worker (or bystander) occurring in the course of performing an agricultural work-related task, or as a result of exposure to hazards in the agricultural workplace. Motor vehicle incidents not clearly involving agricultural equipment are excluded.

Table 1. Demographics of 1998 Indiana Farm Fatalities.

Gender	Age Distribution					Total	%
	1-17	18-35	36-59	60+	Unk		
Males		1	3	9		13	81.25
Females			1	2		3	18.75
Unknown							
Total		1	4	11		16	100
%		6.25	25.00	68.75		100	
Average Age		33	56	72		66	

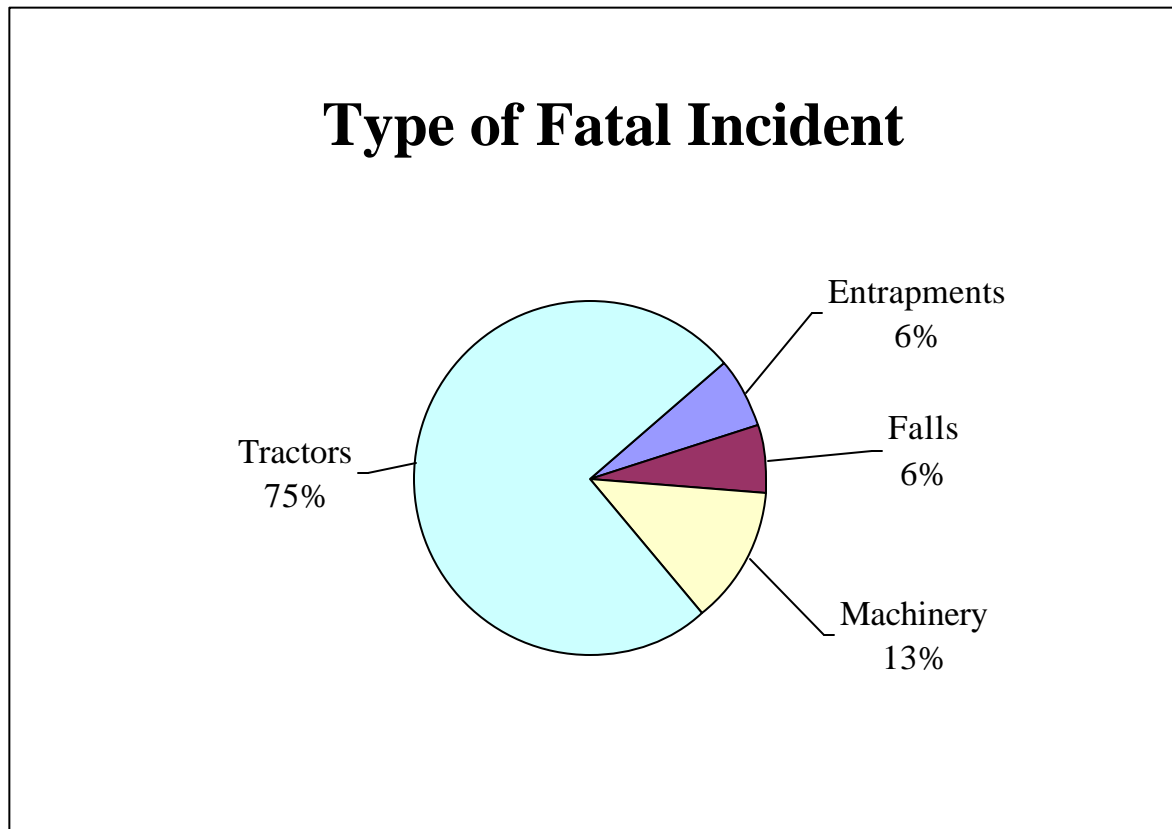


Figure 1. 1998 Indiana Farm Fatalities by Type of Incident

Table 2. 1998 Indiana Farm Fatalities by Type of Incident

Type of Incident		Fatalities
Entrapments or suffocations	Grain entrapments	1
	Gas asphyxiations (manure pit)	0
Falls	From farm structures	1
	While on ground	0
Livestock-related incidents	Horse-drawn wagon incidents (Primarily runovers)	0
	Kicked by horse	0
	Attacked by bull	0
Machinery-related incidents	Other entanglements	0
	PTO entanglements	0
	Crushings	1
	Runovers	1
Tractor-related incidents	Overturns	6
	Roadway collisions	2
	Runovers	0
	Crushings/pinnings	4
	Struck by front-end loader	0
Other incidents (struck/crushed by flying/falling objects, heat stroke)		0
Total		16

1998 Indiana Farm Fatalities

Table 3 provides a summary of fatalities occurring in Indiana counties in 1998. Fatal farm work-related incidents are described here by (1) date of incident, (2) county of report (3) age of victim, (4) gender of victim, (5) description of circumstances surrounding the incident, and (6) Farm and Agricultural Injury Classification (FAIC) Code. Figure 2 presents a geographic distribution of Indiana's farm-related fatalities in 1998.

Table 3. 1998 Indiana Farm Fatalities by Date

	Date	County	Age	Sex	Description of incident	FAIC
1	1-25-98	Switzerland	57	M	Fell from ladder in barn and hit head on rock under hay.	01
2	3-29-98	Miami	62	M	Was towing truck with tractor when the victim was pinned between truck and steering wheel.	Und
3	3-30-98	Jefferson	69	M	Tractor overturned on side of ravine.	Und
4	5-15-98	Wayne	57	F	Crushed between dump truck bed and frame when bed malfunctioned while transferring fertilizer.	01
5	5-17-98	Huntington	55	M	Loading article into dumpster and the tractor came back on him.	Und
6	5-20-98	Davies	69	M	Using front-end loader to move round bales. Weight and slope caused tractor to overturn.	01
7	7-1-98	Lawrence	75	M	Slipped and was runover by backwheels of combine.	01
8	9-3-98	Dubois	56	M	Tractor overturned on hill	Und
9	9-8-98	Shelby	68	M	Loading round bales with front- end loader. Lifted bale too high and it fell on him.	Und
10	9-16-98	Knox	88	M	Pull starting another tractor when his tractor overturned to rear.	01
11	9-28-98	St. Joseph	76	M	Tractor overturned onto victim in pond. Drown.	01
12	10-8-98	Adams	75	M	Semi-tractor he was driving ran into rear of a farm tractor pulling two wagon loads of soybeans.	10
13	10-15-98	Blackford	72	F	Van crashed into combine header when passing.	10
14	10-16-98	Greene	65	M	Neck crushed when trapped under bushhog.	Und
15	10-29-98	Clinton	33	M	Suffocated after falling into wheat bin when rope ladder broke.	01
16	11-1-98	Jackson	74	F	Tractor rolled back into bank and overturned while pulling another tractor up a hill.	Und

Geographic Distribution of 1998 Indiana Farm Fatalities

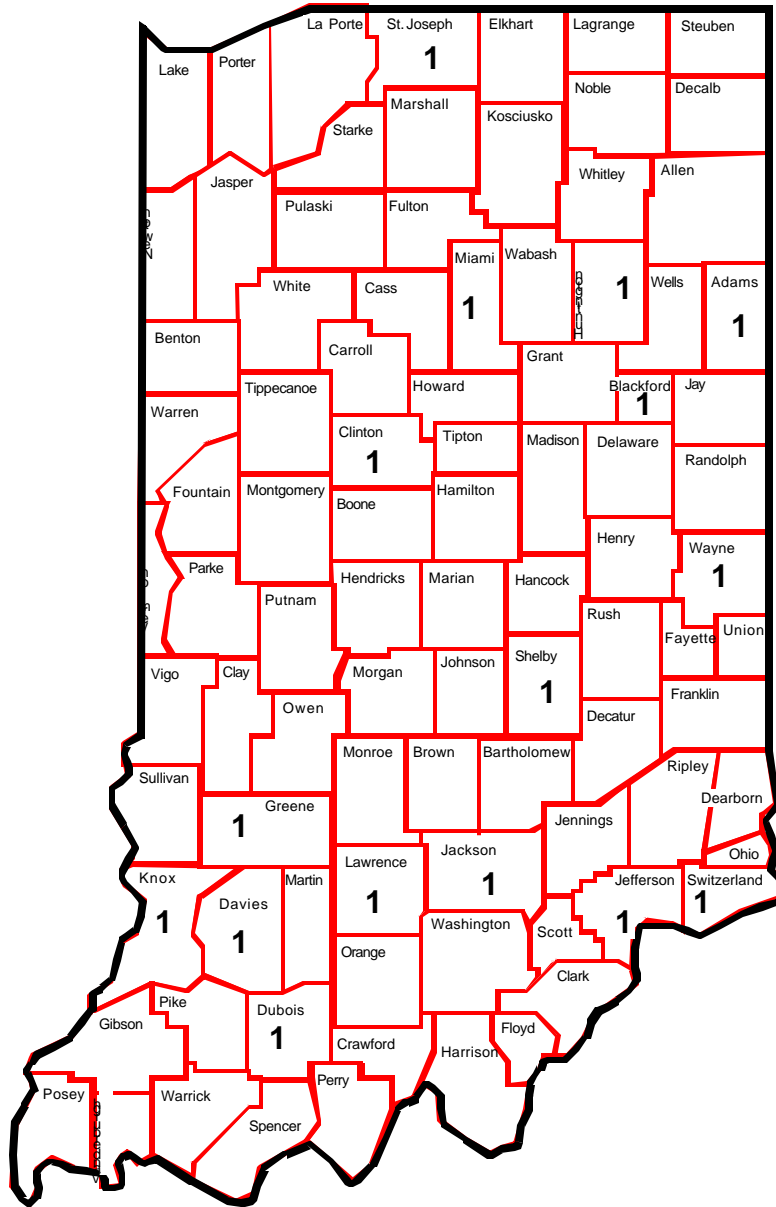


Figure 2. Geographic Distribution of 1998 Indiana Farm Fatalities.

Trends

Figure 3 provides an annual summary of identified farm-related fatalities over the past 29 years. It is believed that 1998 recorded the lowest number of fatalities of any year since Purdue's Agricultural Safety and Health Program has been keeping records.

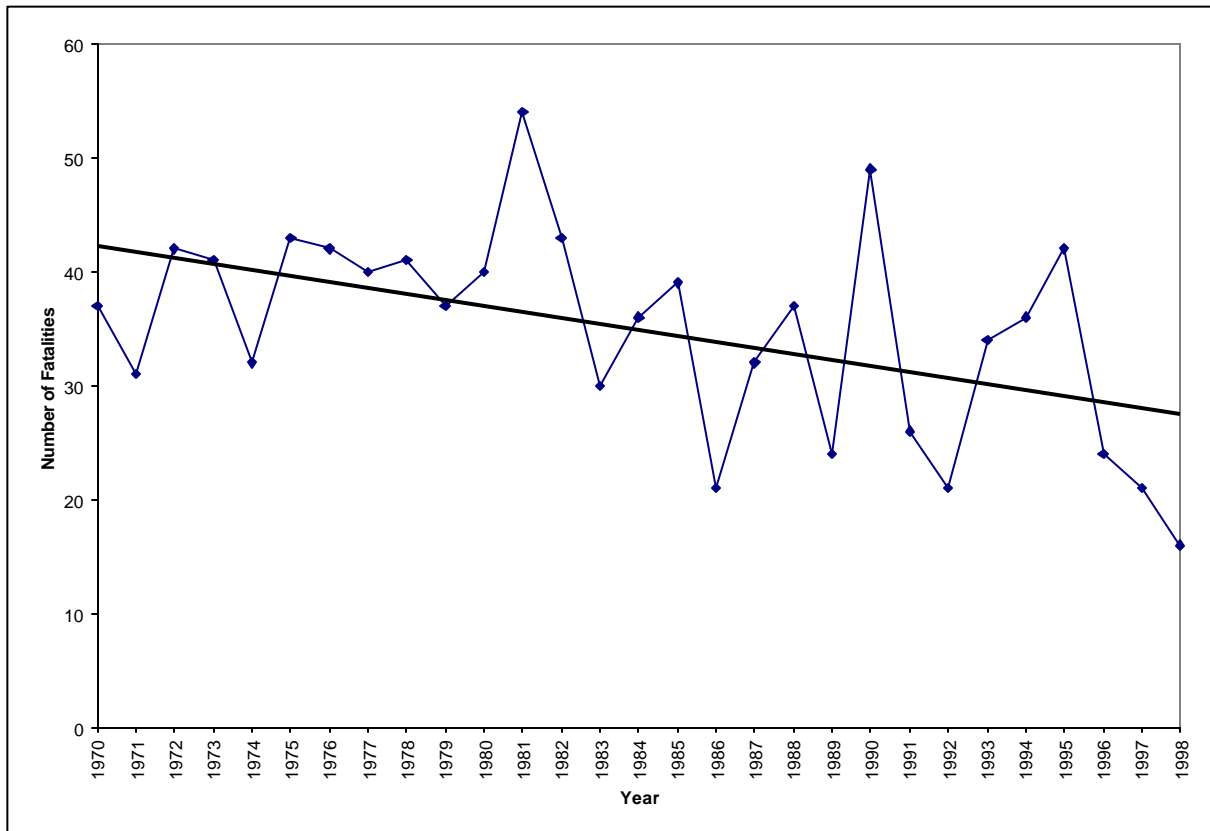


Figure 3. Annual Summary of Farm-related Fatalities.