

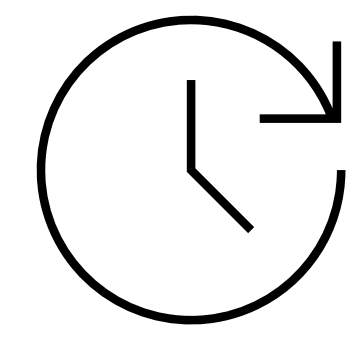
Validating Nasogastric Feeding Tube Placement

Raishma Anwar, Kate Stanton, Jax Whited, Anjollie Ramakrishna, Angelica Gonzalez

Objective

To design and develop an efficient method to verify correct feeding tube placement

Feeding Tube

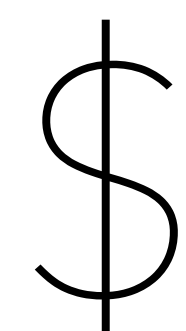


Insertion requires
1-30 minutes

User Needs



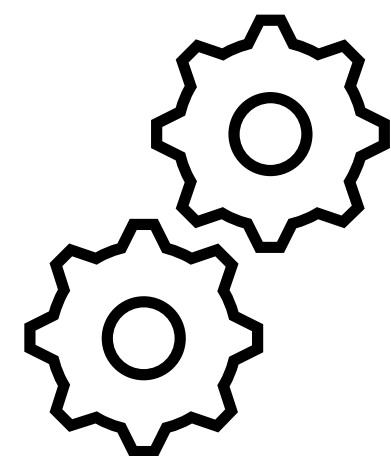
Ease of Use



Low Cost



Patient.
Comfort



Utility

Acknowledgments

We would like to acknowledge Asem Aboelzahab and Ryan Michael Meister Jr for their mentorship and guidance.

Project Partner

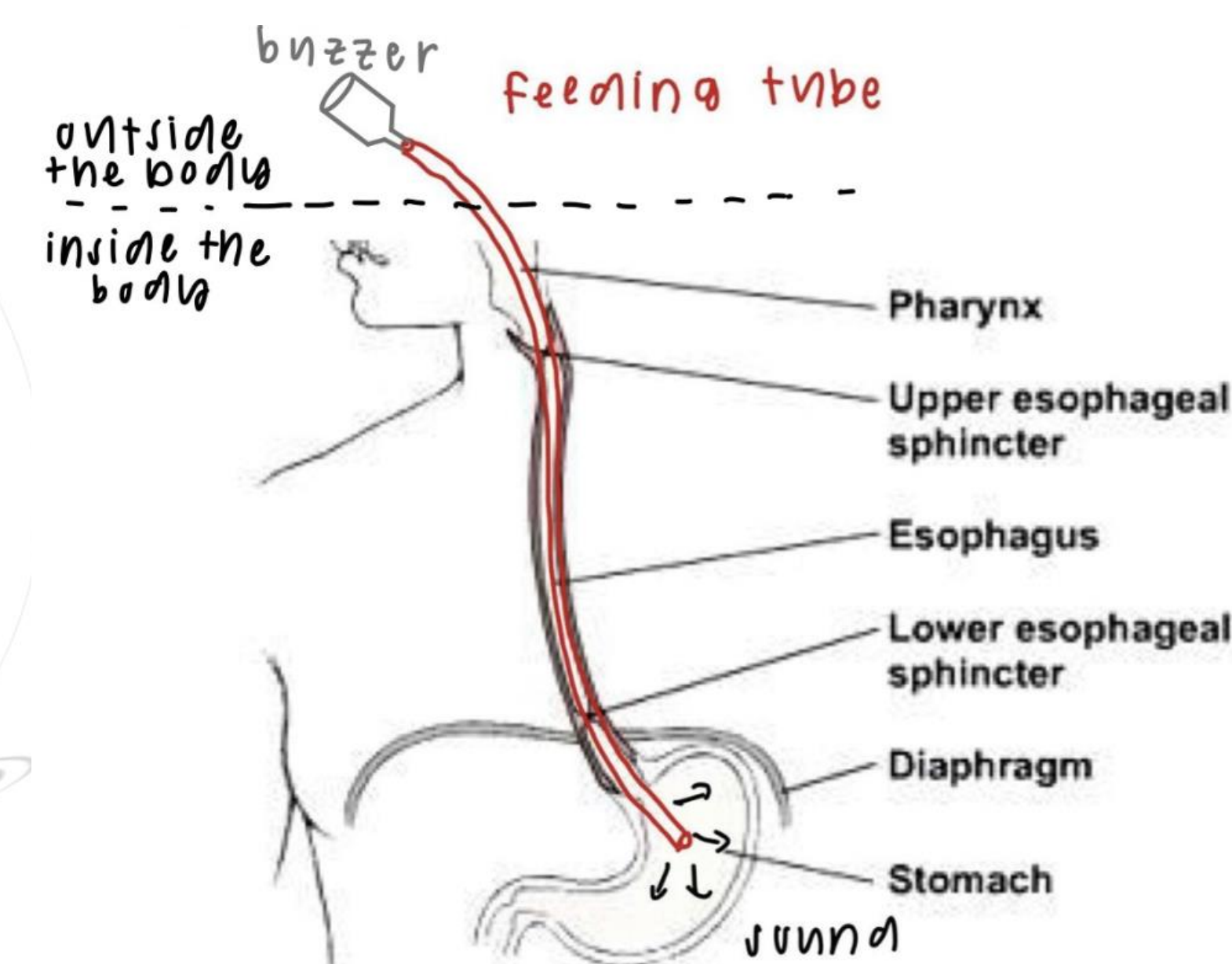


Dr. Hountz is a clinical Associate Professor with over 20 years of nursing experience. Her primary nursing focus has been in the emergency department where she has specialized in trauma nursing, trauma program management, and emergency department education and leadership.

Current Design



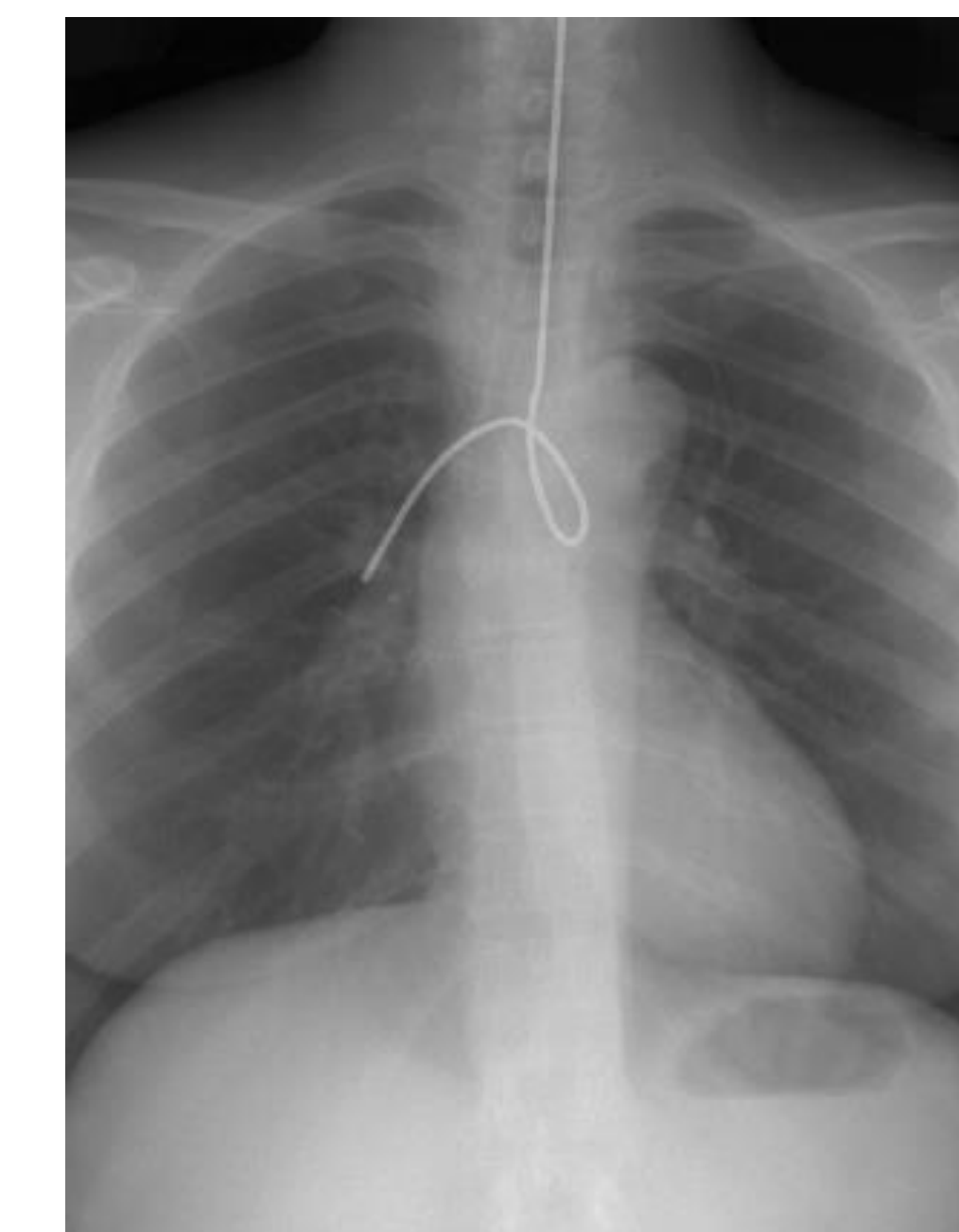
Current Cad Design of Attachment



Drawing of Concept

1. Insert the Feeding Tube into the patient past the laryngopharynx
2. Attach the end of the feeding tube to attachment
3. Screw on the cap with the battery and buzzer
4. Use stethoscope to determine where feeding tube is in body.

Current Gold Standard

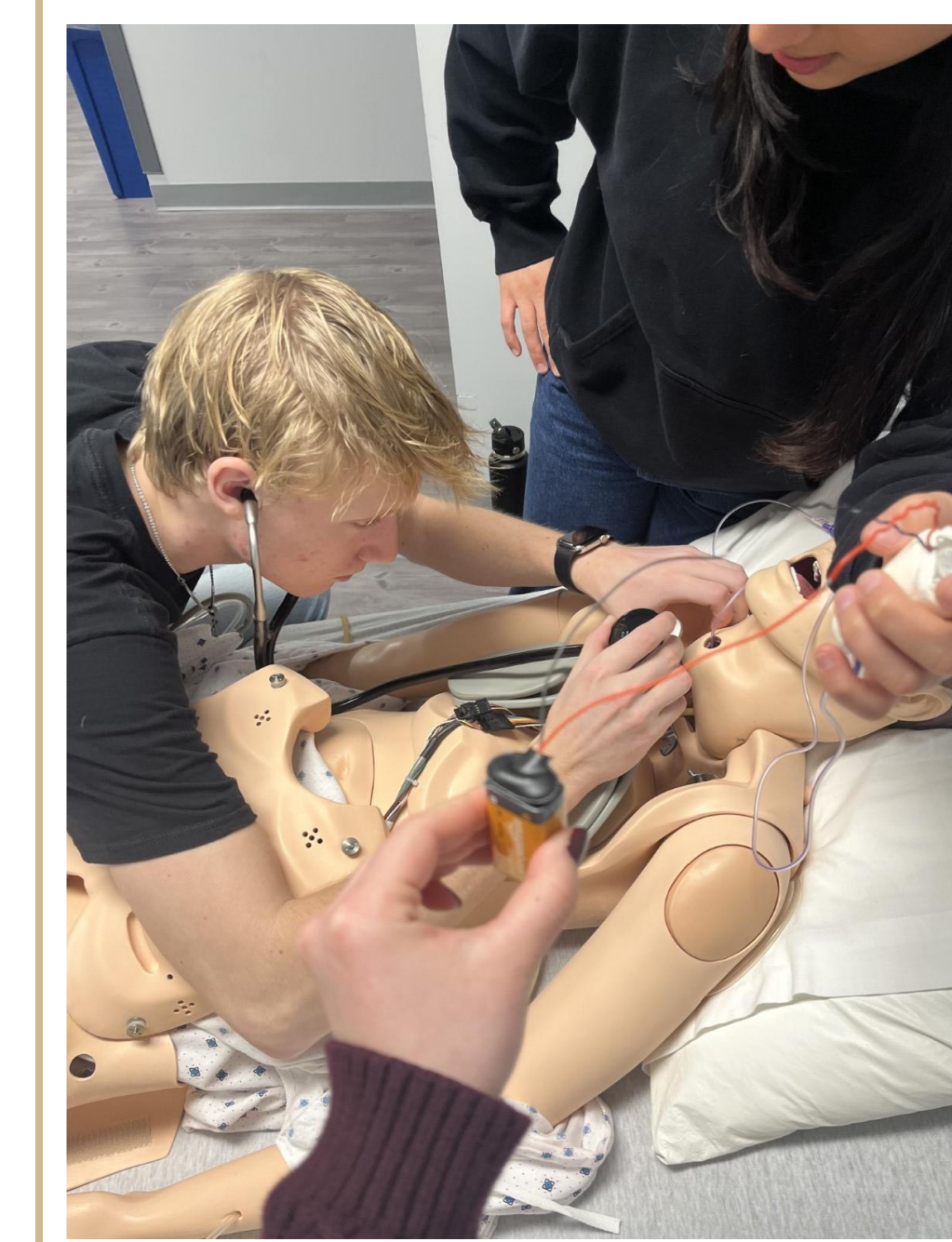


Takes a lot of time
51% > 2-hour delay

Constantly is being rechecked
33% needed > 3 x-rays

Often needed in emergency situations

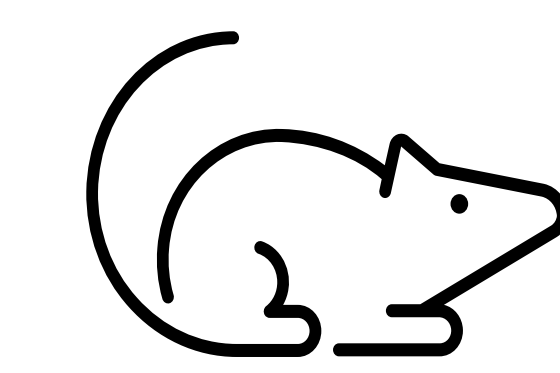
Testing



Future Directions



Print CAD of Attachment prototype



Further testing with more complex model



Introduce product to market