

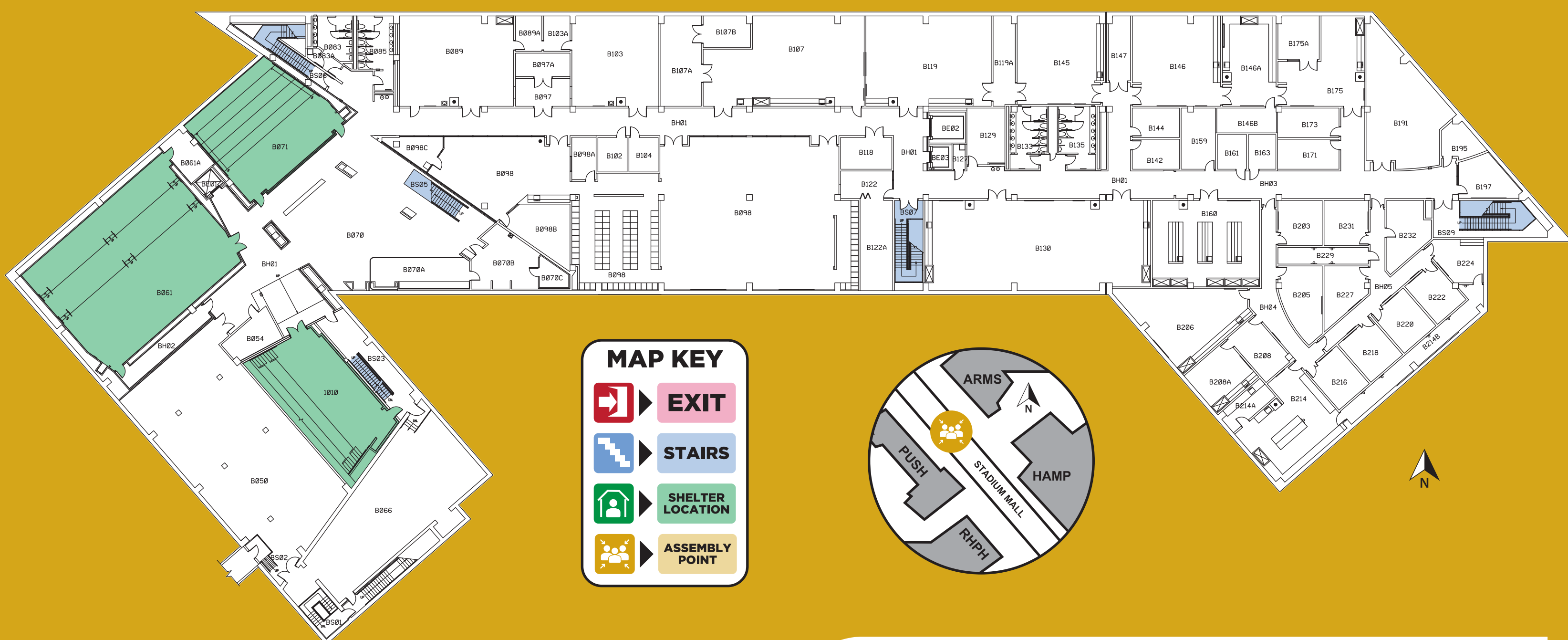
EMERGENCY PROCEDURES

PURDUE
UNIVERSITY
ARMSTRONG HALL

IMPORTANT NUMBERS

911 for Police, Fire and all life threatening emergencies

Purdue University Police: (765) 494-8221 | You are in **ARMS** in the **BASEMENT**



SEVERE WEATHER

- Calmly proceed to the basement level of the building.
- Lecture halls 1010, B061, & B071 are preferred for occupants to gather.



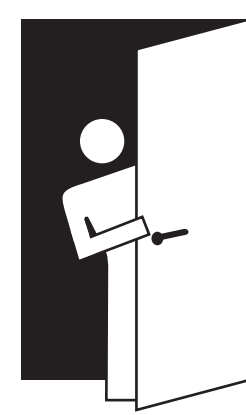
MEDICAL EMERGENCY

- Avoid leaving the injured person except to summon help.
- Do not move the injured person.
- Render **FIRST AID** or **CPR** if you are trained and feel comfortable doing so.
- Call 911.



FIRE

- Pull nearest fire alarm.
- Use stairwells to leave the building.
- Do not re-enter building until directed by emergency personnel.
- Alert other people as you evacuate and provide assistance to others if necessary.
- Gather to the west of Armstrong Hall in emergency assembly area.



ACTIVE THREAT

- Seek immediate shelter, preferably in a room that can be locked, barricaded, or secured.
- Remain in place until emergency personnel provide additional guidance or tell you it is safe.



PURDUE ALERT

Receive emergency alerts. Sign up to receive campus emergency alerts straight to your smartphone (via text). Visit: purdue.edu/securepurdue

IMPORTANT PHONE NUMBER: Purdue University Police (765) 494-8221