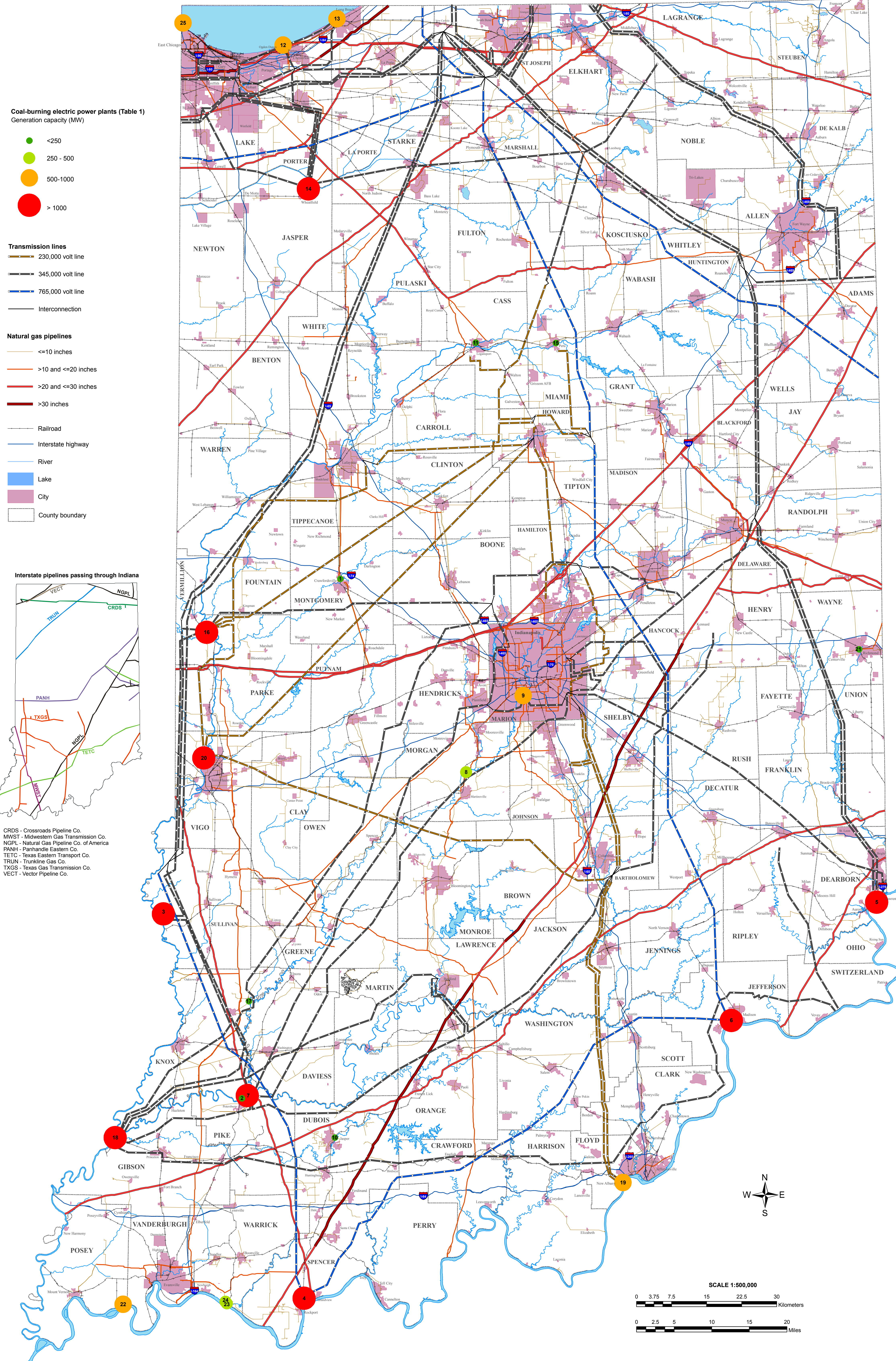


COAL, ELECTRICITY, AND GAS TRANSPORTATION SYSTEMS IN INDIANA

Compiled by Agnieszka Drobnik, Maria Mastalerz and Kathryn Shaffer
May 2006

ELECTRICITY TRANSMISSION LINES AND NATURAL GAS PIPELINES



SURFACE AND UNDERGROUND COAL MINES

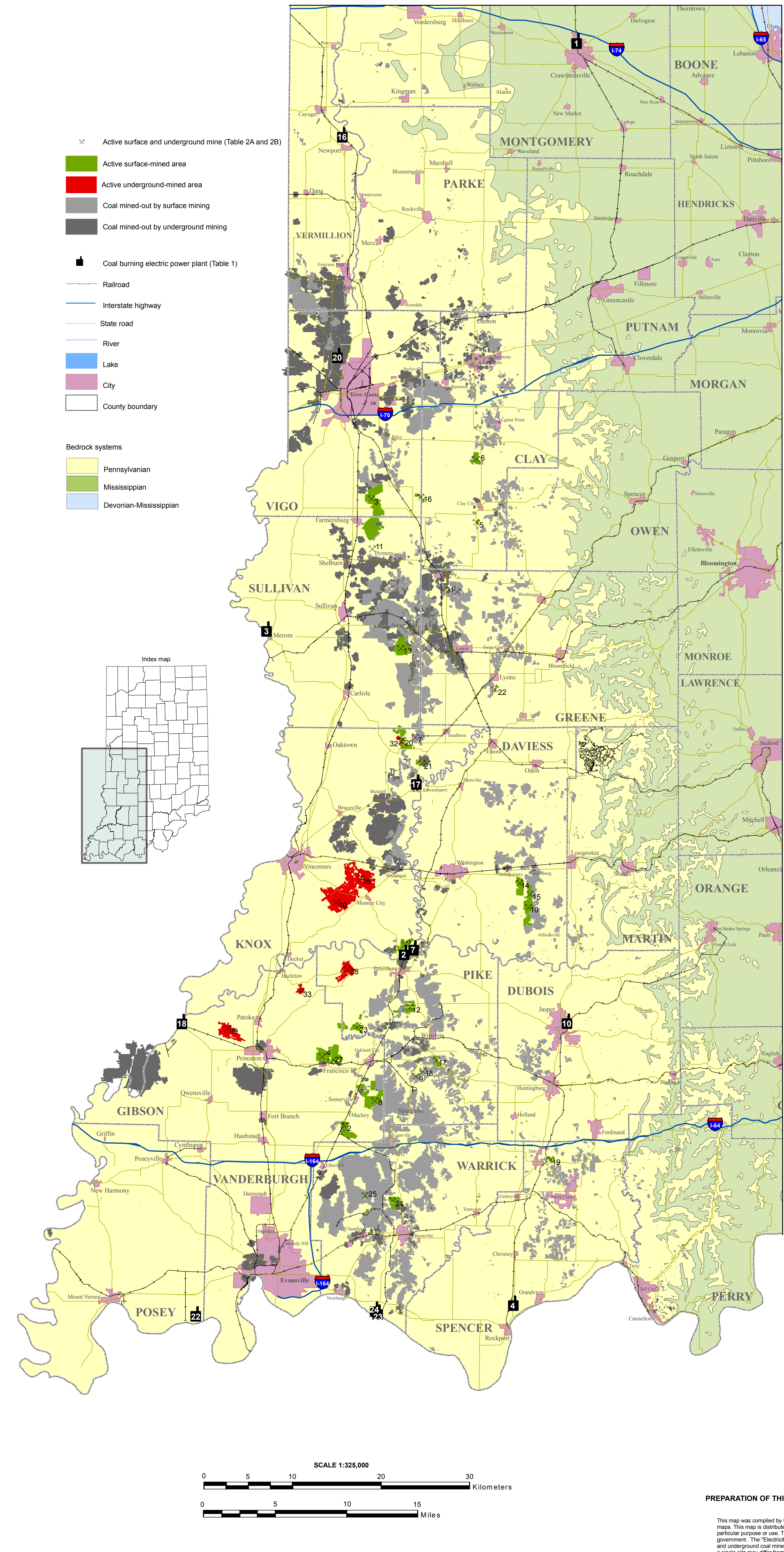


Table 1. Investor-owned, cooperative, and municipal coal-burning electric power plants

ID	Company	County	Generation Capacity (MW) ^{1,2}
1	Crawfordsville Electric Light & Power Co.	Montgomery	25
2	Hoosier Energy R E C Inc.	Pike	234
3	Frank C. Rotts	Sullivan	1,080
4	Rockport	Spencer	2,600
5	Tarboro Creek	Daviess	1,101
6	Indiana Michigan Power Co.	City Creek	1,304
7	Indianapolis Power & Light Co.	Petersburg	1,873
8	Eagle Valley (formerly Pittsburg)	Morgan	332
9	Hawling Street (formerly Elmer W. Stou)	Mason	698
10	City of Jasper	Jasper	15
11	City of Logansport	Logansport	43
12	Northern Indiana Public Service Co.	Porter	616
13	Bally	La Porte	540
14	Michigan City	Jasper	540
15	R. M. Schaefer	Jasper	1,544
16	City of Peru	Peru	35
17	PSI Energy Inc.	Vermillion	1,002
18	Edwardsport	Knox	110
19	Gibson	Greene	3,340
20	R. Gallagher	Floyd	600
21	Whisper River	Vigo	1,165
22	City of Richmond	Wayne	94
23	Southern Indiana Gas & Electric Co.	Wayne	531
24	A. B. Brown	Warrick	415
25	F. B. Culey	Warrick	742
26	Southern Indiana Gas & Electric Co. and Alcoa Generating Corp.	Warrick	742
27	State Line Energy LLC	Lake	613

Table 2A. Active surface mines in Indiana as of February 2006

ID	Company	Surface Mine Name	County	Year opened
1	B. B. Mining, Inc.	Pike ¹	Knox	1996
2	Black Beauty Coal Company	Discovery #1, Somerville South Pt	Gibson	1993
3	Black Beauty Coal Company	Farmersburg #1, South Pt	Sullivan, Vigo	1996
4	Black Beauty Coal Company	Miller Creek, Sugar Ridge ²	Clay	1996
5	Black Beauty Coal Company	Miller Creek, Jervis Pt	Clay	2002
6	Black Beauty Coal Company	Miller Creek, Knox Pt	Clay	2001
7	Black Beauty Coal Company	Somerville #1, Somerville Central	Gibson	1996
8	Black Beauty Coal Company	Somerville East	Pike	1996
9	Black Beauty Coal Company	Vaing, Carrang Pt	Daviess	1995
10	Black Beauty Coal Company	Coal Field Development Company	Sullivan	2005
11	Black Beauty Coal Company	Kindell Mining, Inc.	Sullivan	2005
12	Black Beauty Coal Company	Kindell #2, White Church Pt ³	Pike	1974
13	Black Beauty Coal Company	Kindell #3, Pennsylvania Pt ³	Sullivan	1967
14	Black Beauty Coal Company	Solar Sources, Inc.	Daviess	1978
15	Black Beauty Coal Company	Carrington, Molloy Pt ⁴	Clay, Vigo	2001
16	Black Beauty Coal Company	Levis	Clay, Vigo	2001
17	Black Beauty Coal Company	Triad Mining, Inc.	Pike	2002
18	Black Beauty Coal Company	Augusta South	Pike	2000
19	Black Beauty Coal Company	Flat Hill	Spencer	2000
20	Black Beauty Coal Company	Freelandville, East Pt	Knox	1996
21	Black Beauty Coal Company	Freelandville, East Pt	Knox	1996
22	Black Beauty Coal Company	Lyons	Greene	2003
23	Black Beauty Coal Company	Patoka River	Gibson, Pike	1996
24	Black Beauty Coal Company	Vigo Coal Company, Inc.	Warrick	1998
25	Black Beauty Coal Company	Cypress Creek	Warrick	2001
26	Black Beauty Coal Company	Rangeline ⁵	Warrick	2001

Table 2B. Active underground mines in Indiana as of February 2006

ID	Company	Underground Mine Name	County	Year opened
1	Black Beauty Coal Company	Black Beauty Coal Company	Gibson	2003
2	Black Beauty Coal Company	Air Quality ⁶	Knox	1993
3	Black Beauty Coal Company	Francisco Underground	Gibson	2003
4	Black Beauty Coal Company	Five Star Mining, Inc.	Pike	2000
5	Black Beauty Coal Company	Wendover	Pike	2000
6	Black Beauty Coal Company	Gibson County Coal, LLC	Gibson	2000
7	Black Beauty Coal Company	Solar Sources, Inc.	Knox	1994
8	Black Beauty Coal Company	Marion City	Knox	1994
9	Black Beauty Coal Company	Sunrise Coal, LLC	Greene	2005
10	Black Beauty Coal Company	Woodward	Greene	1996
11	Black Beauty Coal Company	Triad Mining, Inc.	Knox	2001
12	Black Beauty Coal Company	Freelandville Underground	Knox	2001
13	Black Beauty Coal Company	White River Coal, Inc.	Gibson	2002

Source: Indiana Department of Natural Resources, Division of Reclamation.
¹ Pike
² In operation
³ In operation
⁴ Currently inactive but expected to resume production in mid to late 2006
⁵ In active operation
⁶ Includes 3 underground mines

INDIANA GEOLOGICAL SURVEY
OPEN-FILE STUDY 06-03

For further information contact:
INDIANA GEOLOGICAL SURVEY
811 North Walnut Grove
Bloomington, IN 47405
http://igs.indiana.edu
(317) 855-7636
IGSinfo@indiana.edu

PREPARATION OF THIS MAP WAS FUNDED BY THE INDIANA CENTER FOR COAL TECHNOLOGY RESEARCH

This map was compiled by Indiana University, Indiana Geological Survey, using data believed to be accurate; however, a margin of error is inherent in all maps. This map is distributed "AS-IS" without warranty of any kind, either expressed or implied, including but not limited to the warranty of suitability of a particular purpose or use. There is no attempt in either the design or production of this map to define the jurisdiction of any federal, state, or local government. The "Electricity transmission lines and natural gas pipelines" map is intended for use only at the published scale of 1:500,000. The "Surface and underground coal mines" map is intended for use only at the published scale of 1:325,000. A detailed on-the-ground survey and detailed analysis of a single site may differ from this map.

Transmission lines modified after Indiana Electric Association, June 1, 1990.