

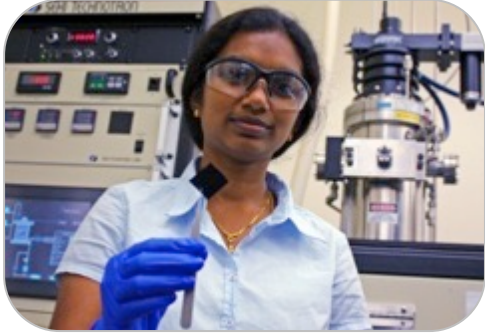


<b><i>James and Diann Robbers</i></b> Purdue Center for Cancer Research	<b><i>\$2.28M</i></b>
<b><i>J. David Schweikle</i></b> School of Aeronautics and Astronautics	<b><i>\$1.25M</i></b>
<b><i>John (d. 2014) and Ellen (d. 2021) Ford</i></b> Purdue Center for Cancer Research	<b><i>Undisclosed</i></b>
<b><i>Phyllis Melick</i></b> Purdue Center for Cancer Research	<b><i>Undisclosed</i></b>

# Annual Application Trends

Applications	2014	2015	2016	2017	2018	2019	2020	2021	2022	Change 2014-22
<i>International</i>	11,584	13,376	13,715	12,722	12,303	11,207	11,330	10,376	13,683 <i>Record</i>	<b>18%</b>
<i>Non-resident</i>	19,681	22,611	24,913	25,261	29,590	31,988	34,014	37,331	42,450 <i>Record</i>	<b>116%</b>
<i>Resident</i>	8,760	9,390	10,148	10,933	11,549	11,717	11,935	11,466	12,176 <i>Record</i>	<b>39%</b>
<i>Total</i>	<b>40,025</b>	<b>45,377</b>	<b>48,776</b>	<b>48,916</b>	<b>53,442</b>	<b>54,912</b>	<b>57,279</b>	<b>59,173</b>	<b>68,309</b> <i>Record</i>	<b>71%</b>
<b>Undergraduate Enrollment</b>	29,255	29,497	30,043	31,006	32,672	33,646	34,920	37,101	≈38,000 <i>Record</i>	≈30%

# Board of Trustees Meeting Topics



**FEB:** Strategic Initiative Update



**APRIL:** Affordability



**JUNE:** Fundraising



**AUG:** End of Year Report



**OCT:** Enrollment & Graduation



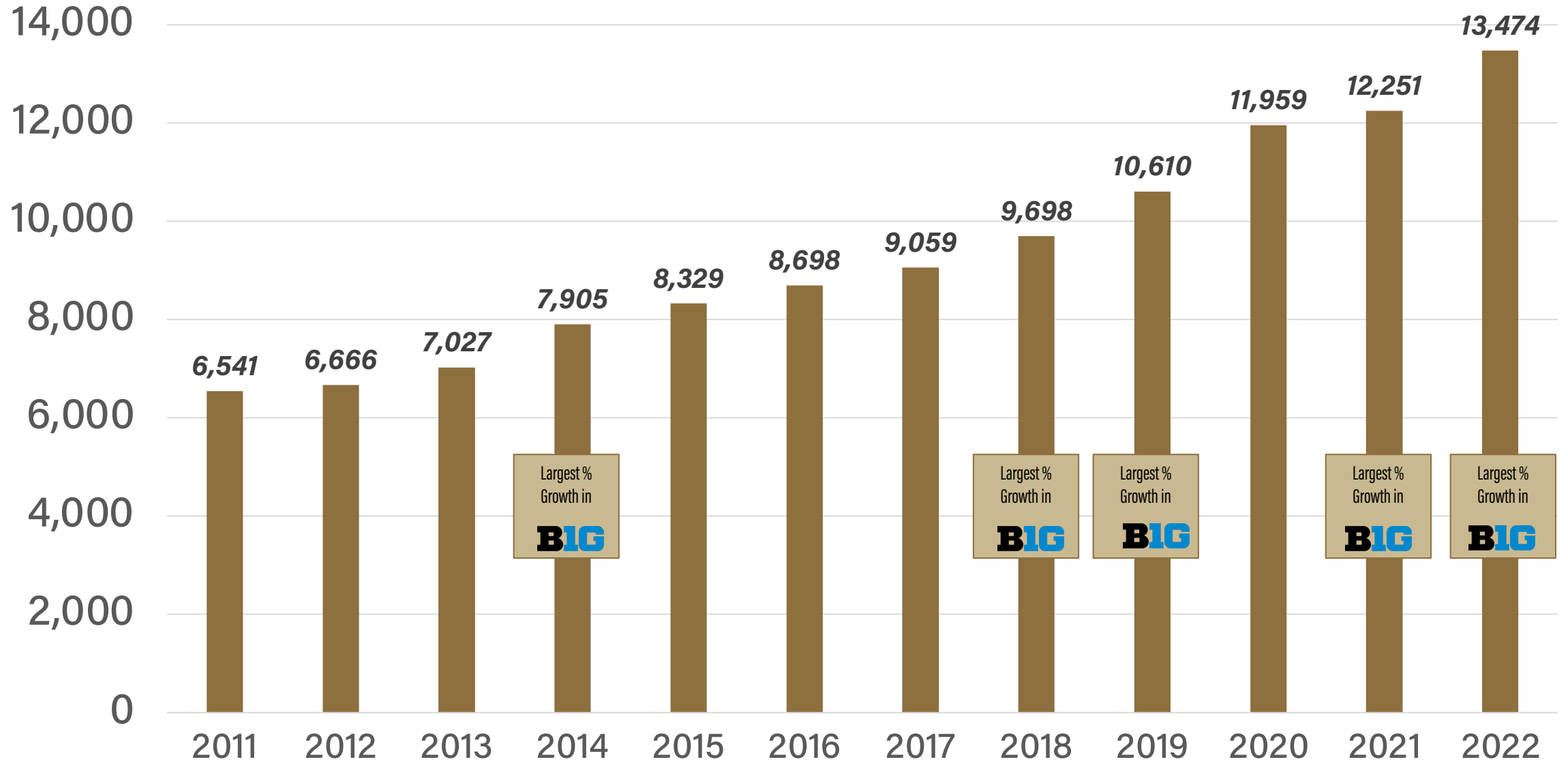
**DEC:** Institutional Reputation

<b>Revenue</b> .....	↑
West Lafayette Enrollment.....	↑
External Sales & Services.....	↑
Grants.....	↑
State Appropriations.....	↑
Regional Campus Enrollment.....	↓

<b>Expenses</b> .....	↑	
Compensation.....	↑	Increases from pandemic lows but still below pre-pandemic levels
Health Care Claims.....	↑	
Supplies/Services.....	↑	
R&R.....	▬	
Debt Service.....	↓	

- ***Steady state surplus on all campuses***
- ***West Lafayette tuition freeze extended through 11<sup>th</sup> year (2023-24)***
- ***Compensation increases***
  - 3% on July 1, 2021
  - December employee appreciation payment
  - 4% + 1% on July 1, 2022
  - Largest increase at Purdue in at least two decades and largest FY23 increase among B1G peers
- ***\$17.5M of Enrollment Growth investments:***
  - 43 net new faculty, 49 net new lecturers, 138 net new teaching assistantships
  - \$20 million planned in FY23, with 95 faculty lines **Record**
- ***\$8M of Next Moves investments***
  - Led to \$23.3M contract funding awarded to PARI in its first year
- ***15%+ growth in sponsored program expenditures***
- ***\$198M of new capital projects approved without debt financing***
- ***AAA bond rating reaffirmed***
- ***Purdue Global in black with modest growth in enrollment***

# Undergraduate Summer Enrollment



# Improving Retention for Summer Start

## *First Time Full Time Summer Start Students*

Year	N	1-Year Retention	2-Year Retention	3-Year Retention	<4-Year Graduation	4-Year Graduation	5-Year Graduation
2016	161	79.5%	73.9%	72.7%	8.1%	47.2%	64.0%
2017	149	77.9%	73.8%	73.2%	6.7%	52.3%	70.5%**
2018	163	82.8%	79.1%	71.8%	12.3%	55.2%**	
2019	157	87.3%	75.2%	67.5%*	5.1%**		
2020	210	84.3%	76.2%*				
2021	169	74.6%*					

\*Based on preliminary Fall 2022 registration

\*\*Based on Summer 2022 pending and awarded degrees



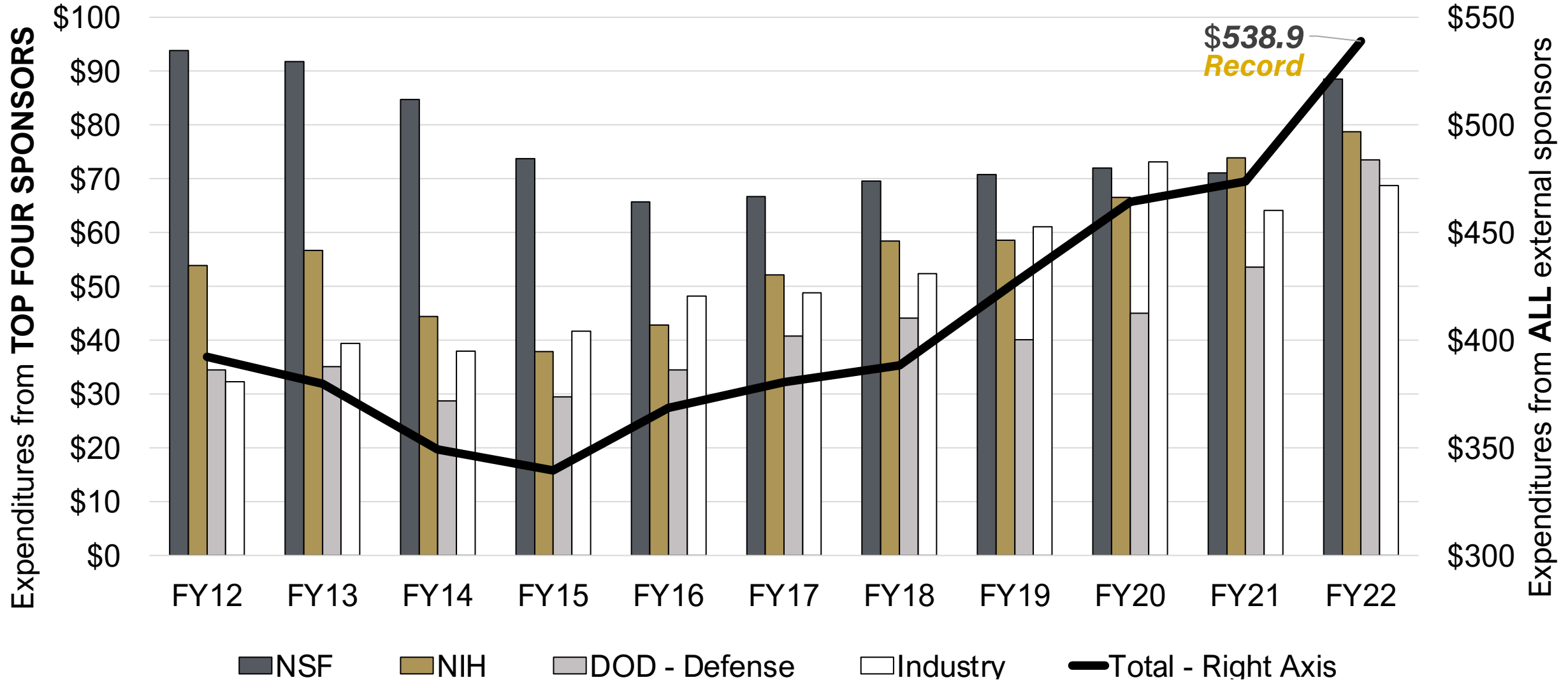
***2020 Promising Practices Award***

**John N. Gardner Institutional Excellence for Students in  
Transition Award**



# External Research Expenditures at Purdue

*In Millions of Dollars*



Annual Production	2012	2013	2014	2015	2016	2017	2018	2019	2020	2021	2022	Trend
<b># of U.S. PATENTS</b>	54	66	100	122	118	123	128	141	180	180 <i>Record</i>	169	No. 6 in the world Improved from No. 27 in 2013
<b># of NEW LICENSES</b>	77	87	120	131	147	135	126	136	148	159 <i>Record</i>	157	+106 since 2012
<b># of STARTUPS</b> <small>From Purdue Research</small>	5	8	24	25	27	21	25 <i>Record</i>	17	22	13	9	Impacted by COVID & Restructuring
<b>TOTAL STARTUPS</b>	Not Tracked	Not Tracked	45	40	38	31	45	48	55 <i>Record</i>	41	24	Purdue Foundry opened in 2013

