

BI ADVISORY COMMITTEE

April 2022

Agenda

Staffing Update

BICC Roadmap

Transformative Education 2.0

Data Governance

Motio CI

Agenda

Staffing Update

BICC Roadmap

Transformative Education 2.0

Data Governance

Motio CI

Staffing Update

Staff Member	Area	Position
Natasha Ervin	BICC	System Analyst
Justin Hollins	BICC	System Analyst
Syed Talha	BICC	Solutions Engineer
Andrea Pluckebaum	IDA+A	Assistant Director, Analytics
Theresa Martin	IDA+A	Assessment System and Specialized Accreditation Lead
Ramesh Madiraju	IDA+A	Database Engineer
Michelle Lewis	FP&A	Senior Data Analyst
Michael Wakolbinger	Grad School	Data Analyst

Agenda

Staffing Update

BICC Roadmap

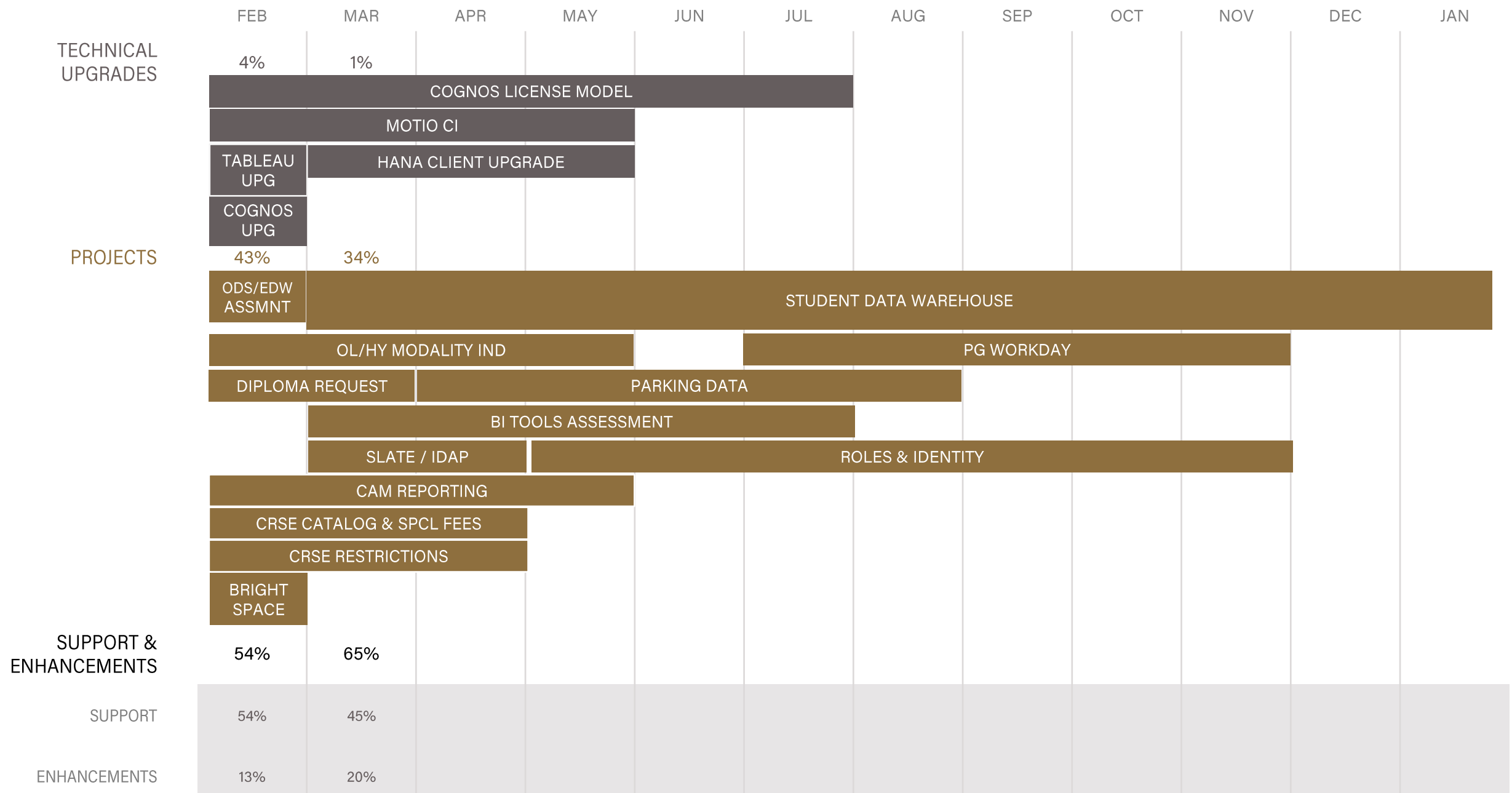
Transformative Education 2.0

Data Governance

Motio CI

BICC ROADMAP

UPDATED
04-07-2022



	Size (IT Hours)	% Complete	Feb-22	Mar-22	Apr-22	May-22	Jun-22	Jul-22	Aug-22	Sep-22	Oct-22	Nov-22	Dec-22	Jan-23
Support (includes scheduled work)			343	510										
Enhancements			157	226										
Non-Project Work Total			500	736	0	0	0	0	0	0	0	0	0	0
Projects														
Cognos Upgrade Feb 2022	150	100%	22											
Cognos license rationalization	250	90%	4	1										
MotioCI Implementation	80	50%	0	0										
Tableau Upgrade Feb 2022	60	100%	6											
Upgrade BI HANA Client 2022	80	30%		14										
Add Diploma Request Banner Table to the ODS	50	100%	18	5										
Banner ODS/EDW Assessment	1000	100%	79											
BI Reporting and Visualization tools assessment	500	100%	2	4										
Brightspace Data Warehoused (IDA+A)	2500	100%	40											
CAM Reporting	500	60%	127	65										
Correct PWL Course Catalog package & Special Fees Course View	200	85%	0	7										
Course Restrictions Fix	500	85%	0	0										
Create ind to notate the mode of instruction based on -OL/-HY prog code	TBD	N/A	46	20										
Enhance Automate the refresh of Slate data in IDAP	105	75%	8	6										
New Beginners Flag in the ODS	275	CANCELLED	69	28										
Parking Data from Multiple Systems to BI	TBD	NA												
Purdue Global Historical Workday Data (HR)	TBD	N/A												
Purdue Student Data Warehouse Build	20000	2%		250										
Roles and Identity Star (HR)	TBD	N/A												
Other (Including Non-BI Projects)	N/A	N/A	2	1										
Total Project Hours			423	401	0	0	0	0	0	0	0	0	0	0
Total Productive Hours (excludes Admin/PTO/etc.)			923	1,137	0	0	0	0	0	0	0	0	0	0
"Radar" - non-approved or scoped projects														
Assessment of Regional Campus Access to LMS Data														
AssetWorks Assessment (AO)														
Electronic Research Administration reporting (COEUS replacement)														
Excel over SQLServer Assessment														
IT 2010 Time Star (HR)														
Move Perceptive Content Data to BI														
Purdue Online Salesforce Data Warehousing and Reporting														
QM4 Phase Out Project: Cost Distribution Star Project (HR)														
QM4 Phase Out Project: Q4 2021 Payroll Results (HR)														
SMAS User Interface Assessment														
SPS GM Billing Data														
SPS Grant Master data for Cybersecurity Maturity Model Certification														
PDW Project Releases														

S4, SF, or ECP Changes

Jun-23

Agenda

Staffing Update

BICC Roadmap

Transformative Education 2.0

Data Governance

Motio CI

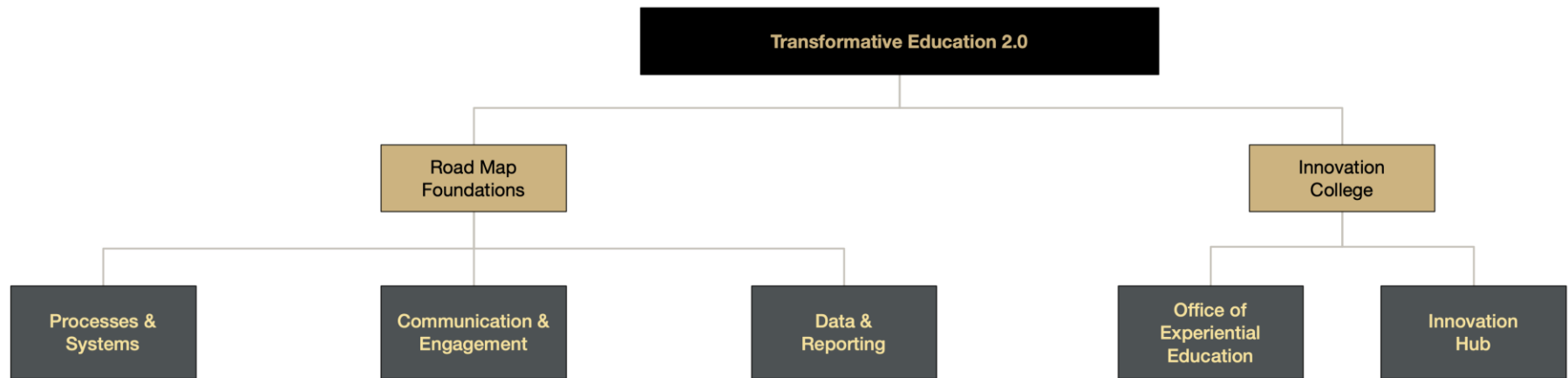
TRANSFORMATIVE EDUCATION 2.0

2022 Strategic Update

Spring 2022



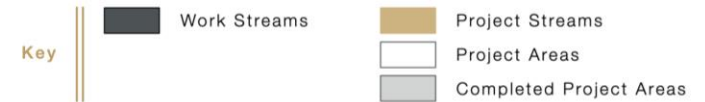
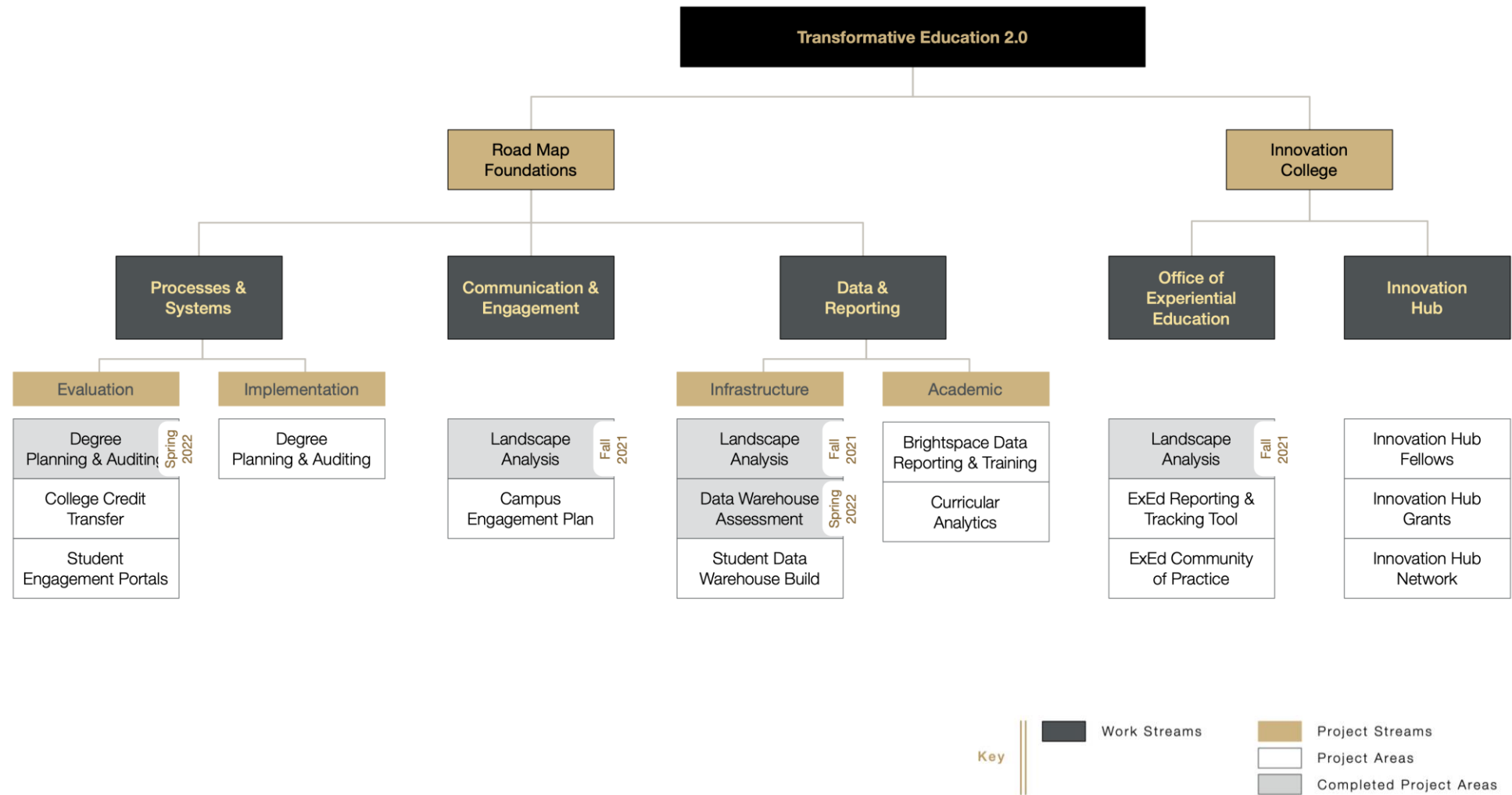
2022 Strategic Update



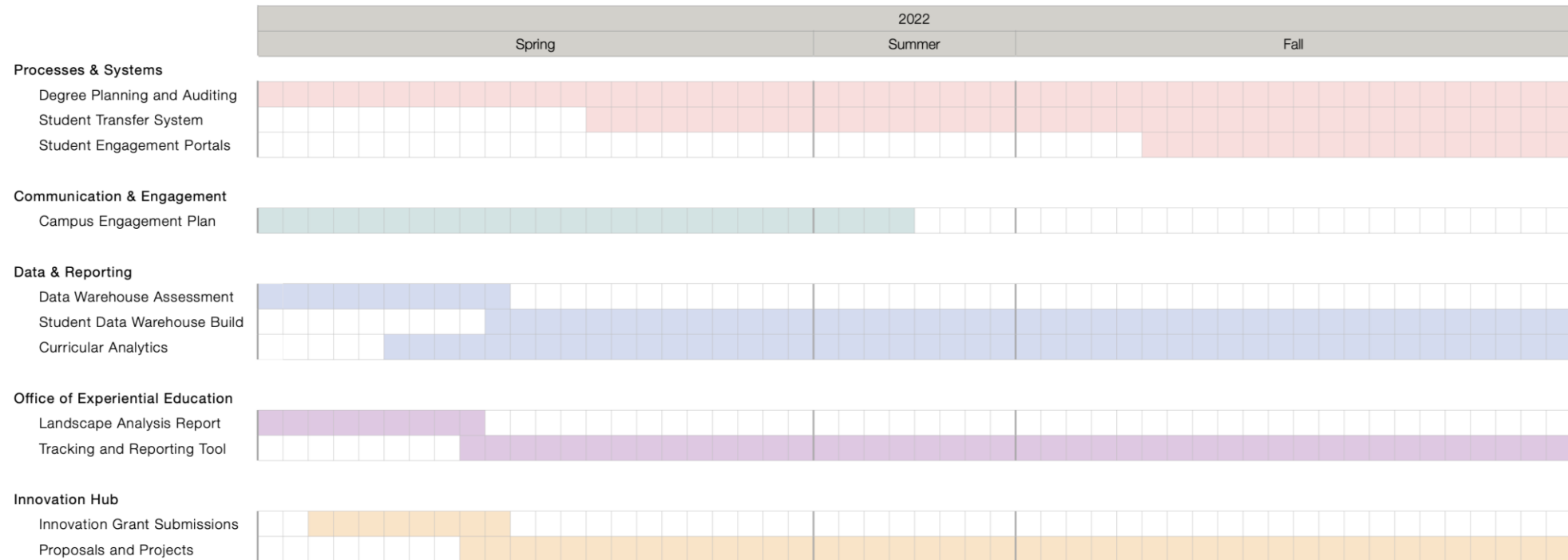
Key  Work Streams



2022 Strategic Update



2022 Strategic Update



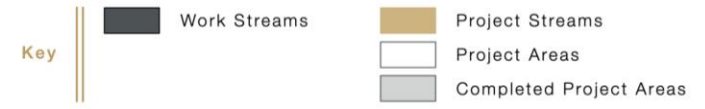
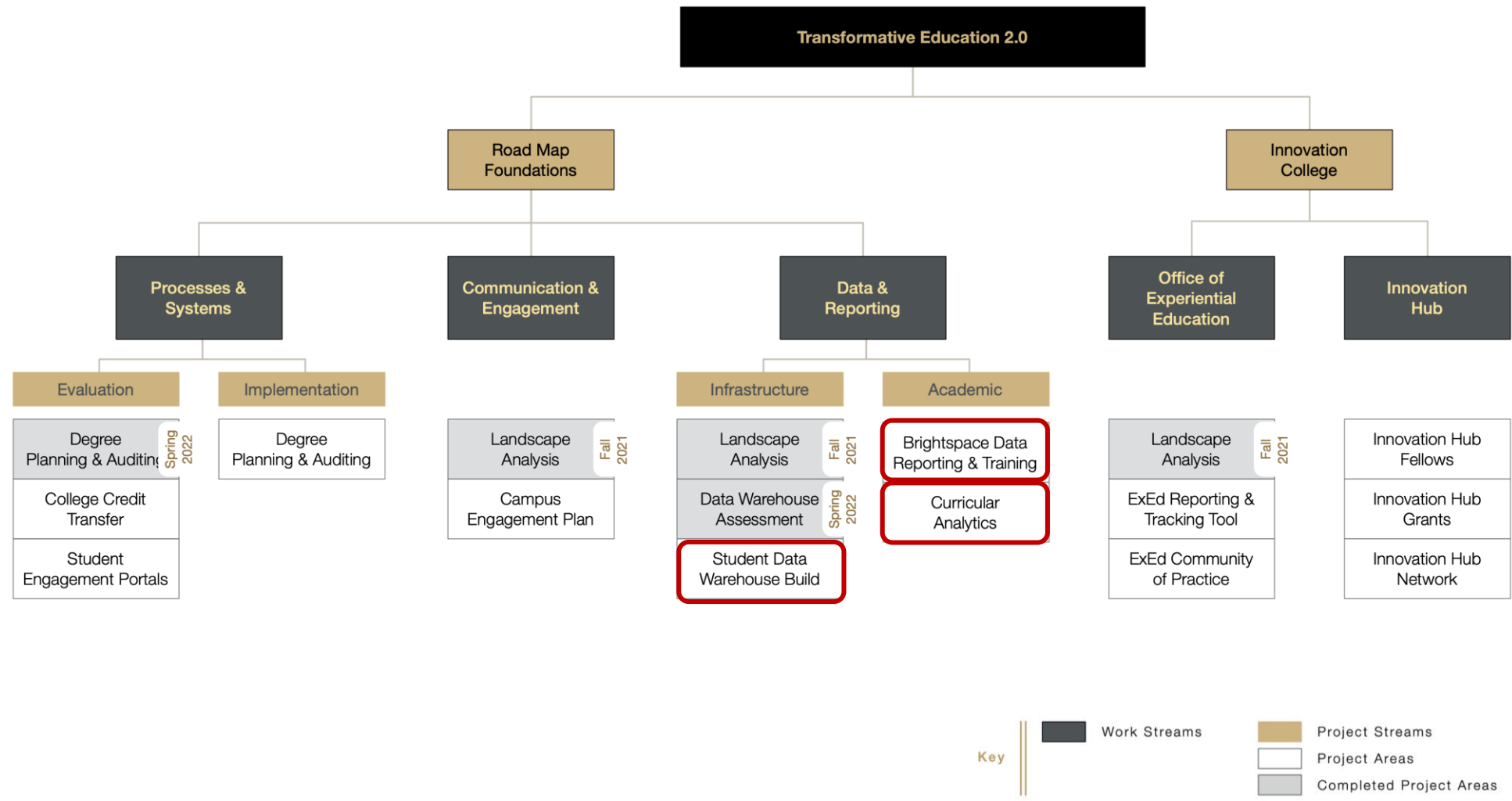
2022 Strategic Update

Near-Term Institutional Decisions

- Staying with current institutional systems:
 - Banner (Student Information System)
 - Brightspace (Learning Management System)
 - Degree Works (Degree Coding and Requirements ONLY)
 - Purdue Data Analytics Platform
- Contracting with EduNav as new tool for degree planning and enhancing student progression to graduation
- Building new Student Data Warehouse and integrating data sources



2022 Strategic Update

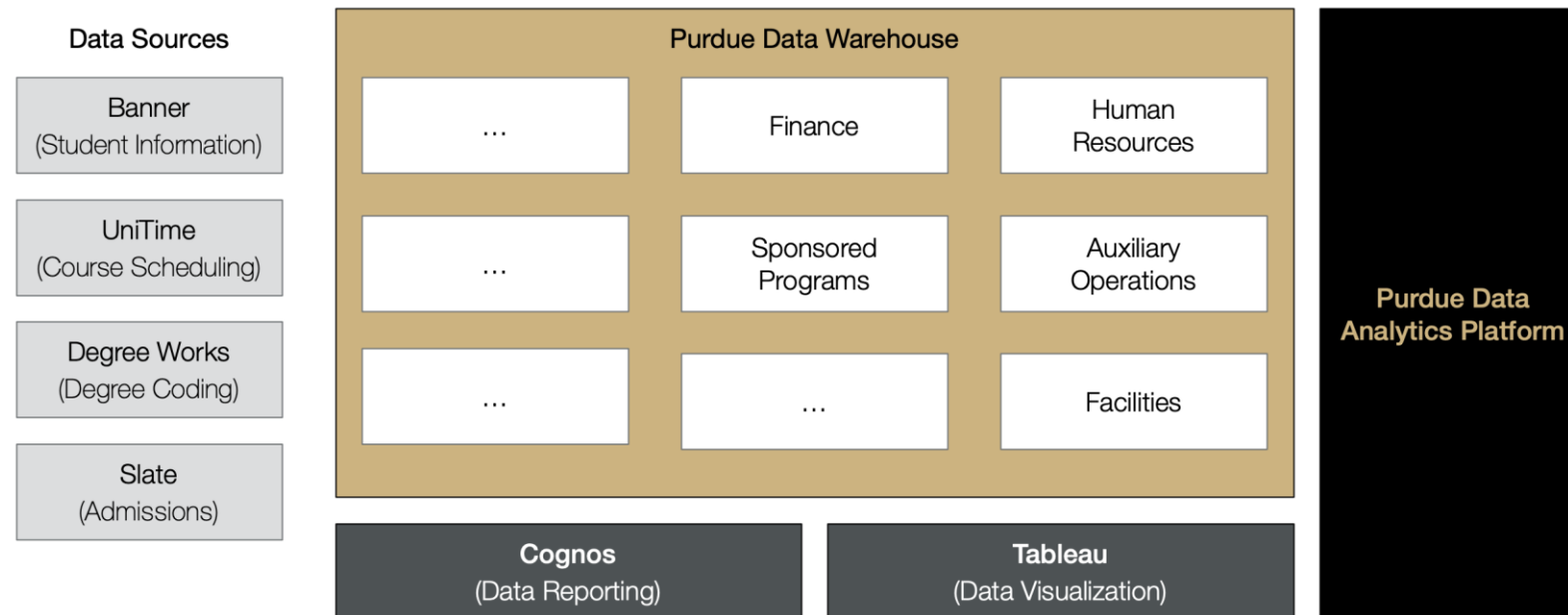


STUDENT DATA WAREHOUSE BUILD



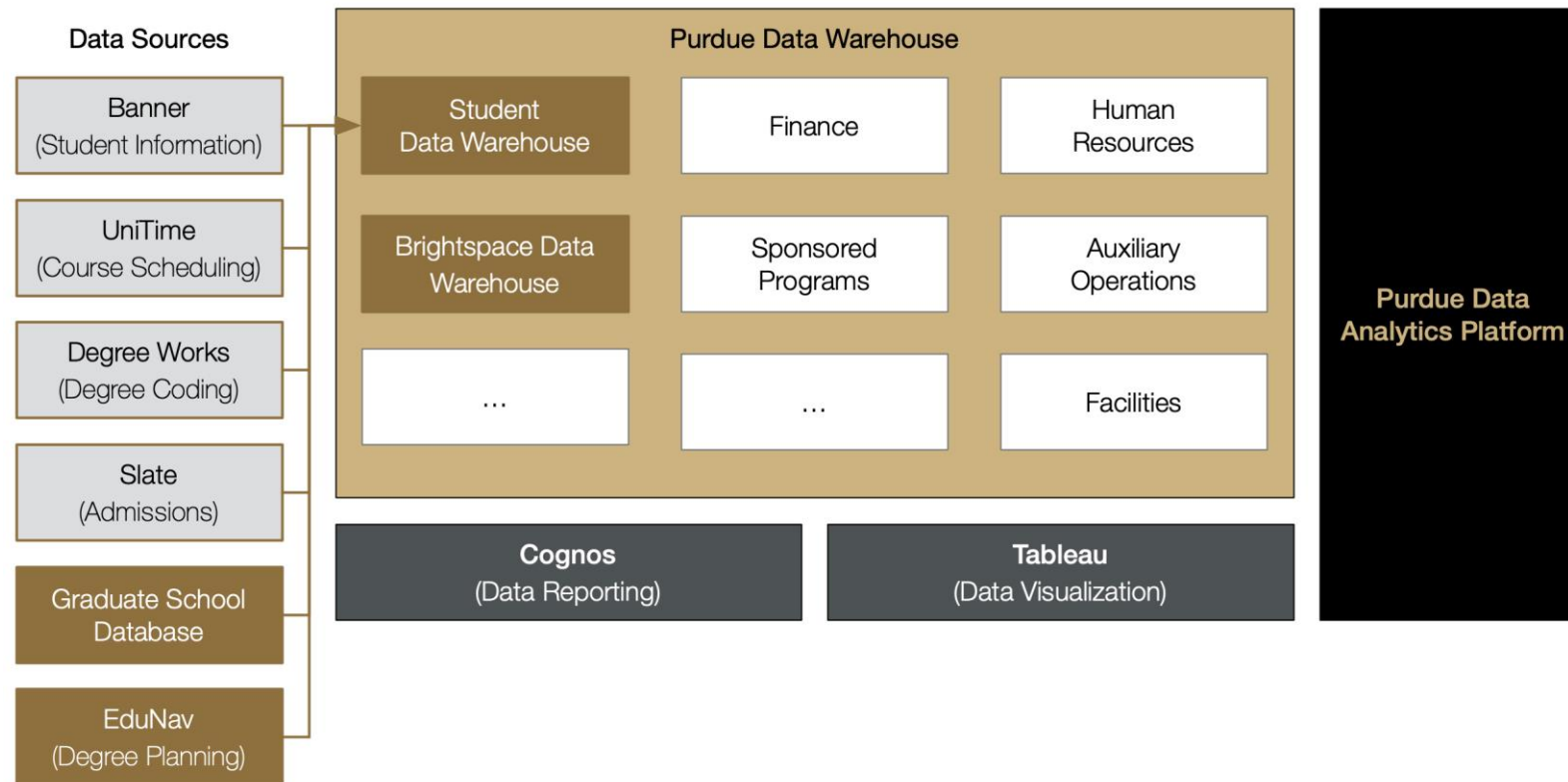
Data & Reporting

Data Ecosystem // Current State



Data & Reporting

Data Ecosystem // Future State



Student Data Warehouse - Scope

- In scope: ODS, Frozen ODS, EDW, Grad School Database
- Star models and datasets in Boiler Insight (PDW database) – estimated:
 - 57 fact tables
 - 149 dimension tables
- 11 project release cycles



Student Data Warehouse - Effort and Timeline

- Official kickoff on April 5th
- 3 years (April 2022 – April 2025)
- Doing design, development, and report writing in parallel
 - Gradual transition of old Cognos content over the duration of the project
 - Project includes end user training

Hours By Area			
Area	Hours	FTE (in total)	FTE (per year)
BICC	17,924	10.8	3.6
EMAR	10,896	6.5	2.2
IDA+A	8,711	5.2	1.7
GRAD School (IMA)	3,801	2.3	0.8
ITaP - PMO	1,872	1.1	0.4
Totals:	43,204	26	8.7

Hours By Workstream	
Data Warehouse Build	19,168
Data Mart QA Work	1,650
Report & Dashboard Development	14,154
Report Writer, End User Training & Rollout	1,635
Frozen ODS & EDW Data Conversions	2,250
Production Support	2,475
Project Management	1,872
Totals:	43,204



BRIGHTSPACE DATA REPORTING AND TRAINING



Brightspace - Background

- Brightspace supplies standard data exports – refreshed daily.
- An IT project has recently been completed to load these exports into Purdue's data warehouse.
- The next giant leap is ensuring data is available and accessible for university stakeholders.
- Requirements gathering meetings:
 - TLT
 - Purdue Online
 - Department Heads
 - Head Advisors
 - Undergrad Curriculum Council
 - Polytech Statewide



Brightspace - About the Data

- Brightspace data may be used to meet a variety of needs across campus, such as:
 - understanding the impacts of student and instructor activity
 - tracking learner progress and performance
 - analyzing assessment effectiveness
 - developing effective course content
 - meeting institutional reporting requirements
 - providing data for research on the scholarship of teaching and learning



Brightspace - Next Steps

- Timeline
 - Spring 2022 – requirements gathering and planning
 - Summer 2022 – report and dashboard development
 - Fall 2022 – deploy content to be used for the fall term



CURRICULAR ANALYTICS



Curricular Analytics

- Project 1: Plan of Study Exceptions Reporting
 - As part of the process of migrating programs to EduNav during the implementation phase, we share and discuss with participating advisors the exceptions data for each Plan of Study. By looking at the distribution of exceptions, we can pull out for further examination the points where there seem to be a higher number of exceptions than elsewhere in the program. This will also inform areas where SmartRules may need to be applied because the program is complex rather than misaligned.

- Project 2: Course Level Enrollment Projections
 - Create a more nuanced estimate of course demand and encourage unit adoption of using this data to make program decisions. This will be achieved by pulling together multiple sources of course enrollment information and applying new data logic programming. With a small pilot group, we will create and implement practices for understanding, interpreting and utilizing data to inform decisions about right-sizing course offerings in order to meet student course demand and mitigate institutional barriers to graduation.



Degree Planning and Auditing

- Degree Works
 - Continue to use for degree requirements coding ONLY

- Course Catalog
 - 8,000+ Courses
 - 250+ Majors
 - 130+ Minors
 - 225+ Unique Concentrations



Degree Planning and Auditing

- EduNav Platform
 - All students are guaranteed to have a plan that is personalized, goal-oriented, and represented in a visual pathway to degree completion
 - Plans are designed to identify optimal pathways to graduation, alerting students if they make a choice that would require additional time
 - Degree plans are based on both official requirements and advisor institutional knowledge, codified into "Smart Rules"
 - Plans are updated automatically as students adjust their goals and course registrations, saving time and ensuring that plans are always valid
 - Information on students' plans is aggregated and provides support for course demand and institutional course planning

- Strengthening institutional processes (e.g., curricular workflows)



Processes & Systems

Example: A General Education Requirement Representation in one major Represented in My Purdue Plan

21 credits?

General Education Requirement		Catalog Term:	Fall 2021	Credits Required:	21
		GPA:	0.00	Credits Applied:	0
Unmet conditions for this set of requirements: You have taken 0 credits but still need 21 more.					
<input type="checkbox"/> Oral Communication	Still Needed:	1 Class is required. Click here for a list of courses that meet this requirement.			
<input type="checkbox"/> Humanities	Still Needed:	1 class is required. Click here for a list of courses that meet this requirement.			
<input type="checkbox"/> Behavior/Social Science	Still Needed:	1 class is required. Click here for a list of courses that meet this requirement.			
<input type="checkbox"/> Science, Tech & Society	Still Needed:	1 class is required. Click here for a list of courses that meet this requirement.			
<input type="checkbox"/> General Education Electives: Introductory or Non-Introductory Level - 9 Credits	Still Needed:	You have taken 0 credits but still need 9 more. Click here for a list of courses that meet this requirement.			
<input type="checkbox"/> General Education Electives: Non-Introductory Level - 6 Credits	Still Needed:	You have taken 0 credits but still need 6 more. Click here for a list of courses that meet this requirement.			

27 credits?

Represented in Catalog

- General Education Elective I - Credit Hours: 3.00 (satisfies Human Cultures: Humanities for core)
- General Education Elective II - Credit Hours: 3.00 (satisfies Human Cultures: Behavioral/Social Science for core)
- General Education Elective III - Credit Hours: 3.00 (satisfies Science, Technology & Society for core)
- General Education Elective IV - Credit Hours: 3.00 (satisfies Information Literacy for core, if needed)
- General Education Elective V - Credit Hours: 3.00
- General Education Elective VI - Credit Hours: 3.00

18 credits?

Spring 2022



Planning. Progressing. Graduating!

The screenshot displays the EduNav interface for a Sociology BA degree plan. The browser address bar shows 'caluni.edunav.com'. The page title is 'COLLEGE Sociology (BA)'. The user is logged in as 'Student'. The interface includes a 'TIMELINE' tab, a 'SAVE' button, an 'Optimize' button, and a status indicator 'OK'. A progress bar shows the current position in the plan.

Completed courses (Spring 2019): 16 CR

- CS 008 (4 CR): INTRODUCTION TO COMPU... Minimum credits B
- ENGL 001C (4 CR): APPLIED INTRMTD COMPO... Courses Outside the Sociolo... A-
- SOC 003 (4 CR): THEORETICAL PERSPECTIVE... Theoretical Perspectives in ... B-
- SOC 028 (4 CR): INTRO TO SOCIOLOGY OF G... Minimum credits A

Fall 2019: 10/16 CR

- SOC 020 - Lecture (282... 5 CR: AMERICAN SOCIETY Modern American Society
- SOC 020 - Discussio... 0 CR: AMERICAN SOCIETY Modern American Society
- SOC 004 - Lecture (194... 5 CR: METHODS OF SOCIOLOGICAL IN... Methods of Sociological Inquiry
- SOC 004 - Discussio... 0 CR: METHODS OF SOCIOLOGICAL IN... Methods of Sociological Inquiry

What is next? (Winter 2020): 10/16 CR

- MATH 004 (5 CR): INTRO COLL MATH BUS & SOC... Essential Mathematics for Soci...
- SOC 005 (5 CR): STATISTICAL ANALYSIS Statistical Analysis

Spring 2020: 13/16 CR

- SOC 168 (5 CR): DEVELOPMNT OF SOCIOLOGIC... Multiple requirements
- SOC 129 (4 CR): RACISM IN WESTERN SOCIETY Multiple requirements
- SOC 130 (4 CR): RACE & ETHNIC RELATIONS Multiple requirements

Fall 2020: 13/16 CR

- SOC 133 (4 CR): INEQUALITY AND SOCIAL CLA... Multiple requirements
- SOC 134 (4 CR): LAW,RACE,CLASS,GENDER,&C... Multiple requirements
- SOC 159 (5 CR): SOCIOLOGY OF LAW Multiple requirements

Navigation buttons on the right include 'Goals - Declared' and 'Careers'. A 'Register' button is visible at the bottom of the Fall 2019 section.

Student Goals: Majors, Minors, Certificates, and Career

The screenshot displays the EduNav interface for a Sociology (BA) program. The top navigation bar includes the 'COLLEGE' logo, the program name 'Sociology (BA)', and user information 'Hello, Student'. Below the navigation bar, there are buttons for 'TIMELINE', 'SAVE', 'Optimize', and 'Status: OK'. A progress bar is visible on the right side.

The main content area is divided into three sections:

- What is next?**: A timeline showing course progress across three terms:
 - Fall 2020 (13/16 CR)**: IC 133 (4 CR), IC 134 (4 CR), IC 159 (5 CR).
 - Winter 2021 (8/16 CR)**: SOC 169 (4 CR), SOC 180 (4 CR).
 - Spring 2021 (4/16 CR)**: SOC 184 (4 CR).
- Goals**: A section titled 'Sociology (BA) Declared' with a 'CHANGE GOAL' button and an 'Add more goals' button.
- Career**: A list of career paths with associated salaries:
 - Eligibility Interviewers, Government Programs: \$41,910
 - Social and Community Service Managers: \$65,750
 - Managers, All Other: \$108,380
 - Survey Researchers: \$53,210
 - Sociologists: \$78,120
 - Social Science Research Assistants: \$41,430
 - Child, Family, and School Social Workers: \$46,060
 - Healthcare Social Workers: \$52,520
 - Mental Health and Substance Abuse Social Workers: \$44,420



Communication & Engagement

Campus Engagement Plan

- Analyzing the communication and student engagement landscape to develop recommendations for a Campus Student Engagement Plan
- Multiple project teams working with students as partners
 - Inventory communication tools used at Purdue
 - Benchmark peer and aspirational institutions' practices, tools, and structure for campus communication.
 - Complete a market analysis of major campus communication tools and vendors

Next Steps

- Compile findings of inventory, benchmarking, and market analysis
- Develop recommendations for Campus Engagement Plan



Experiential Education

Landscape Analysis // 350+ Programs

- The most common types of ExEd are project-based learning, service-learning, and field work
- > 95% say students gain career-relevant knowledge, skill, and abilities
- > 70% of programs have defined structure with students learning outcomes and engage students in reflections
- 90% of Purdue program leaders engage with students throughout the entire experience with leaders including faculty, staff, AND students

Next Steps

- Investigating a tool(s) to enable campus reporting and tracking of ExEd



Grant-funded Projects and Fellows; Research Development

- Established funding framework for individuals and teams to pursue innovative projects emphasizing transdisciplinary experiences for students for scaling both size and across disciplines/settings
- Launched mentored proposal writing program (co-sponsored by EVPRP) focused on large federal grants for research on teaching and learning
- Butler partnership focused on innovation and knowledge sharing via co-convening of events and leadership among Indiana institutions

Next Steps

- Focusing on the development and expansion of innovations, with a secondary outcome on the scholarship of teaching and learning (SOTL)
- Scheduling transdisciplinary convenings across campus



Transformative Education 2.0

Future Project Areas

- College Credit Transfer
 - State-wide initiative for XML transcript standardization
 - Will investigate college credit transfer tools, systems, and solutions

- Student Engagement Portals
 - Will synthesize findings and recommendations from Campus Engagement Plan
 - Will investigate common student portals (e.g., myPurdue)



Agenda

Staffing Update

BICC Roadmap

Transformative Education 2.0

Data Governance

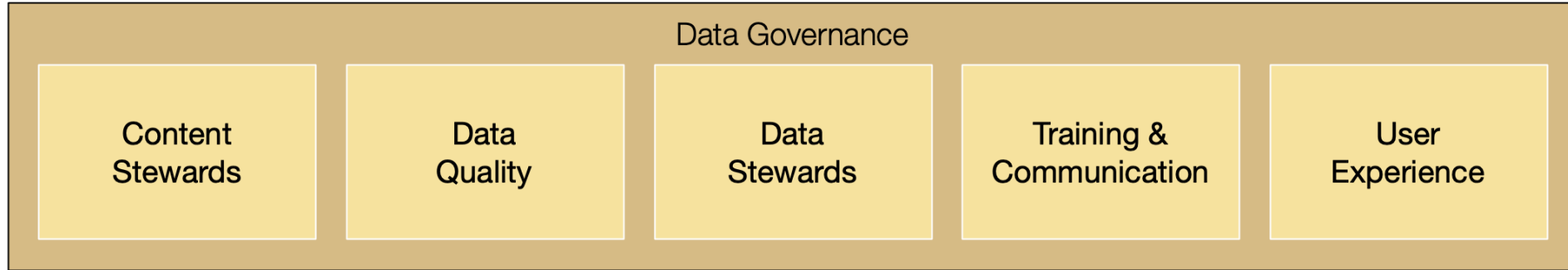
Motio CI

DATA GOVERNANCE STRUCTURE

BIAC - 4/13/2022

Data Governance Structure

Executive Data Council (EDC)



- Committee chairs will be non-voting members of the EDC, attending all scheduled meetings with a standing agenda item – sharing committee updates, elevating discussion topics, and requesting decisions, as needed.
- In partnership with the Data Governance Program Manager and the Chief Data Officer, chairs of each committee will convene on a regular cadence in order to ensure coordination across committees.
- Data Governance committee notes and documents will be shared broadly with the data community.

Responsibilities & Chairs

Committee	Chair	Responsibilities (abbreviated)
DG – Content Stewards	Andrea Pluckebaum (IDA+A)	Recommend standards, validation, ongoing maintenance, and common navigation for Cognos and Tableau content
DG – Data Quality	Steve Lipps (EM)	Build upon current processes to create a shared repository of data quality issues, mitigation, and resolution of data issues
DG – Data Stewards	Robert Oxender (IT-Security)	Renewed focus on data access, security, classification, and handling
DG – Training & Communication	Cindy Moscrip (HR) Sarah Bauer (IDA+A)	Establish data training and communication standards, templates, best practices.
DG – User Experience	Zach Yater (BICC)	Ensure consistency and usability for the presentation layer for standard content (Cognos and Tableau)

Staying Realistic

- NOT REINVENTING THE WHEEL: significant work to be done, but lots of knowledge and processes from individual units to build upon
- WORKLOAD: committee participation needs to be distributed so as not to overly burden any individual or unit; CDO and DG Program Manager will be resources for groups as they develop
- ACCOUNTABILITY: transparency of the work being done to be shared with the data community; responsibility of committees to the EDC for delivering on their goals; responsibility of committees to stay in their lane, but also be collaborative; responsibility of EDC to make decisions, provide guidance and support
- ALIGNMENT: individuals from across units are looking forward to working together to streamline processes, definitions, metrics, standards, user experience, and communications in ways previously not done

Next Steps

MARCH

- Executive Data Council (EDC) approval

APRIL-MAY

- Meet with each chair / co-chair(s) to discuss:
 - Membership
 - 1-Year Goals
 - Charter
 - First Agendas

JUNE

- Memberships finalized
- Chairs schedule meetings
- Shared work area set up

JULY

- Committees begin meeting

6-Month; Annual

- Review progress
- Set goals
- Assess membership and resources

CALL TO ACTION

mamstutz@purdue.edu

If you are interested in participating in one of these committees, please talk with your supervisor and reach out to me via email.

Agenda

Staffing Update

BICC Roadmap

Transformative Education 2.0

Data Governance

Motio CI

Motio CI

Promote Content

Broadcast Messages

Versioning

Check In/Out

Testing

Versioning

- Compare versions to see differences
- Revert to previous version

Check In/Out

- Limits editing to one user at a time
- Comments for revisions (can link to footprints tickets)
- Run tests on check-in

Testing

- Upgrades
- DQM vs CQM
- Assertions
 - Data
 - Performance
 - Visual/Formatting

THANK YOU