



BUSINESS INTELLIGENCE ADVISORY COMMITTEE

MAY 6, 2021



Business Intelligence Competency Center
INFORMATION TECHNOLOGY

Agenda


- **Introduction**
Andrea Pluckebaum
- **BICC Current & Future Projects**
Mike Budzik
- **Project Spotlights**
 - **Purdue ID Card Office** – Loribeth Hettinger & Rob Cumberland
 - **Brightspace Reporting** – Molly Amstutz & Anne Weiss
- **New Management dashboard around credit hours**
Molly Amstutz
- **Purdue Global Update**
Ethan Durda
- **Data Community Check-in**
All





INTRODUCTION

ANDREA PLUCKEBAUM



BICC CURRENT & FUTURE PROJECTS

MIKE BUDZIK

BICC INVESTMENTS 2021-2022

UPDATED
5-5-2021

	Size (IT Hours)	% Complete	Mar-21	Apr-21	May-21	Jun-21	Jul-21	Aug-21	Sep-21	Oct-21	Nov-21	Dec-21	Jan-22	Feb-22
Support (includes scheduled work)			664	614										
Enhancements			289	216										
Non-Project Work Total			953	830	0	0	0	0	0	0	0	0	0	0
Projects														
Banner Upgrades	TBD	100%												
Boiler Insight 2 Transition	TBD	NA												
Cognos 11.1.7 IF003	100	100%	17											
Cognos license rationalization	250	25%	16	1										
ODS Post Upgrade Realignment	350	100%	54	39										
ODS 9.2 Assessment	TBD	NA		4										
Tableau 2020.4.3 Upgrade	70	100%	3	26										
Add Critical Course Flag-new Data Set Type/Event to Course Request Form	TBD	NA		53										
Assessment of Moving Perceptive Content (SPS)	200	100%	40	3										
Brightspace ODS Phase II (DLS)	150	100%	48	93										
Brightspace Data Warehoused (IDA+A)	TBD	35%	58	162			★			★			★	
Cognos Portal Reorganization	235	100%	15											
HRDM Create a Time Star (HR)	800	75%	59	103										
New Bursar Address Rule	40	100%		enh										
Purdue Global	TBD	N/A	88	25										
QM4 Phase Out Project: Benefits Star (HR)	530	76%	140	84										
Row level security for ODS - investigation	TBD	NA		enh										
Other (Including Non-BI Projects)	TBD	N/A	0	1										
Total Project Hours			538	594	0	0	0	0	0	0	0	0	0	0
Total Productive Hours (excludes Admin/PTO/etc.)			1,491	1,424	0	0	0	0	0	0	0	0	0	0
"Radar" - non-approved or scoped projects														
Build Stars for Candidate Data and Candidate Pipeline Data (HR)														
Correct PWL Course Catalog package & Special Fees Course View														
Course Restrictions Fix														
Move Perceptive Content Data to BI														
New Fields from Online Candidate Clearance to the ODS														
Project Accounts Receivable Tables in BI														
QM4 Phase Out Project: Cost Distribution Star Project (HR)														
QM4 Phase Out Project: Q4 2021 Payroll Results (HR)														
SMAS User Interface Assessment														
SPS GM Billing Data														
IT 2010 Time Star (HR)														
PDW Project Releases			★				★			★			★	



PROJECT SPOTLIGHT - PURDUE ID CARD OFFICE

LORIBETH HETTINGER & ROB CUMBERLAND

Project Spotlight

Card Services Data Mart

Card Services Data Mart

Business Goal

The goal of this project was to pull together card services data from Transact and integrate it with StarRez in order to meet Student Life reporting needs.

Card Services Data Mart

Project Objectives

- Conduct Requirements Gathering sessions to determine what data models may be needed
- Complete high level design of potential data models
- Sponsor Approval of data models in scope for the project
- Develop and validate data models
- Identify and develop key standard reports
- Develop support for the Card Services Reporting environment

Card Services Data Mart

Timeline

Known Milestones	Start Month (or Date if Known)	Target Completion Month
Project Initiation and Planning	November 2019	Feb 2020
Develop data structures, reports and/or dashboards based on the Requirements	Feb 2020	Dec 2020- Feb 2021- (Actual Completion Date)

Card Services Data Mart

Deliverables

- Approved Data Models for Card Services Data Mart
- Key Standard reports
- Training for Data Models
- Metadata for Data Models
- Support Process for Card Services Data Mart

Card Services Data Mart

Status Update

- Three successful production releases of data models for the Card Services Reporting environment.
- Multiple Standard Reports were defined, developed and tested



PROJECT SPOTLIGHT - BRIGHTSPACE REPORTING

MOLLY AMSTUTZ & ANNE WEISS

Brightspace Data Warehouse

Anne Weiss & Molly Amstutz
Assistant Directors, IDA+A
Project Functional Leads

Project Team

- **Project Sponsors:**
 - Gerry McCartney – EVP Purdue Online
 - Jenna Rickus – VP Teaching and Learning
 - Mike Budzik – Assistant Director, BICC
- **Core Team Members:**
 - Molly Amstutz – Functional Lead
 - Anne Weiss – Functional Lead
 - Amy Keene – Technical Lead
 - Wendy Kenner
 - Ryan Bousman
 - Josh Newberry
 - Taylor Stayback
 - Rajini Prabhu
 - Anthony Mariga
 - Robin Jones

Overview

- **Warehousing some (not all) Brightspace data**
 - **Approximately 50 Brightspace Tables → 10 Star Data Models**
 - **Integration of Brightspace data with Institutional Data is needed**

Stakeholder Questions

Teaching & Learning

- How does Purdue define a continuous variable to quantify engagement?
- What can Brightspace data tell us about how we measure learning?
- How do we go beyond running static reports and integrate this data into other systems used by advisors (and others)?

Purdue Online

- Which students do I need to proactively reach out to due to low engagement?
- How can I increase retention in our online programs?
- Which students are struggling and may need academic support?

Timeline

Release 1: 7/20/2021

- User Enrollments and Withdrawals
- Assignment Submission
- Grade Results
- Content Progress and Completion

Release 2: 10/12/2021

- Quiz Activity
- Attendance User Sessions
- Rubric Assessment
- Academic Engagement Log
- Session and System Access
- Activity Exemptions Log

Unanswered Questions

- **Who will have what level of access?**
- **Where will the data be housed?**
- **Determine frozen and/or snapshot cadence.**

Future

- In parallel with IT project, IDA+A will be working on:
 - Standard/Departmental Reports
 - Tableau Dashboards
 - Data Training Resources
 - Metadata Development
 - Handling Ad Hoc Requests
- Partnering with the data community



NEW MANAGEMENT DASHBOARD AROUND CREDIT HOURS

MOLLY AMSTUTZ

Credit Hour Dashboard

Purpose

- **Developed for the Provost's Office, the Credit Hour Management Dashboard provides a visual representation of student credit hours along with faculty and lecturer headcounts.**
- **There are different ways credit hours can be tracked. This dashboard represents total productivity in a unit (all credit hours taught to undergraduate and graduate students both residential and through Purdue Online).**
- **For purposes of the Provost Office and the Academic Program Review, this dashboard will serve as the official number.**

Details

- **Credit Hours** - The dashboard displays student credit hours taught by academic college. Data is frozen at CENSUS and displayed by fiscal year. Credit hours can be broken out by campus, college, department, delivery, and course level.
- **Faculty** - Faculty and lecturer headcount data uses the HR snapshot frozen as of October 31st of each year.
- **Documentation**: Users can find the specification for this dashboard here <https://purdue.datacookbook.com/institution/reports/38764>, including documentation on how the data was queried.
 - NOTE: Business rule change – official credit hour reporting is as of CENSUS for Fall, Spring, *and* Summer
- **Access**: All PWL faculty and staff



DEMO



PURDUE GLOBAL UPDATE

ETHAN DURDA

PURDUE GLOBAL INTEGRATION PROJECT – BI ADVISORY UPDATE

6 May 2021

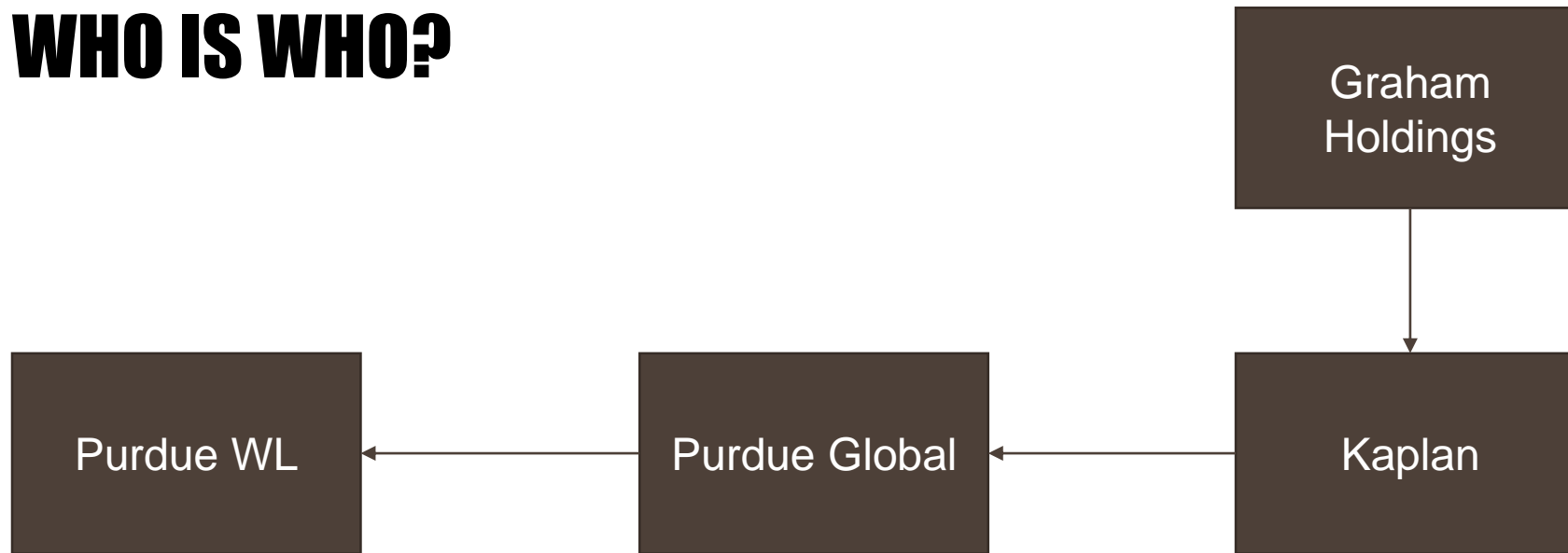
PURPOSE OF PROJECT

- What are we doing?
- Who are the players?
- Goals and Expected Outcomes
- Current Steps
- Call to Action

WHAT ARE WE DOING?

- Shore up the PG business model
 - Save money
 - Create a model where we better control PG processes
 - Identify areas where we can share costs with internal partners instead of Kaplan's
 - Save money in the long term on all engagements
- Major Phases
 - Phase 1 – HR
 - Phase 2 – Finance
 - Phase 3? – Student

WHO IS WHO?



PHASE 1 UPDATE – TARGET 1/1/2022

Major Items

- Adjunct faculty a major effort - from recruitment to pay - major unique business process – **Outsource to APL NextED**
- 50 state exposure creating challenges for us in payroll – **Outsource to ADP**
- Significant PG Projects Also in Flight Include:
 - Moving to semesters
 - Goals/Efforts to significantly increase student population

Reporting/Data Impacts

- New Data Extracts Unique to PG
- SAP and SF
 - New Company Code
 - New Payroll Area
 - New Job Families
 - Interfaces with ADP/APL and Kaplan systems
 - New Reports and Dashboards

PHASE 2/3 UPDATE – TARGET 7/1/2022

- FI focused, but with friends
 - Scope:
 - Ariba – Procurement
 - Travel – Concur
 - S4 – Full Accounting
 - Working on estimates and planning
- Student facing systems TBD

CALL TO ACTION

- Understand if your reports need to use company code.
- Watch for data changes and announcements.
- Talk to us!



DATA COMMUNITY CHECK-IN

First, introduce yourself and then discuss...

Professional Development

- What professional development goals do you have for the upcoming year?
- Did you present at or attend any virtual conferences this year? What are the benefits of attending a virtual conference? What is not as effective?
- What conference format do you prefer for the coming year (online, in-person) and why?

Networking Discussion

- What is your favorite summertime activity?
- If you could choose one vacation destination (and it were safe to travel there), where would you go?
- What does your perfect ice cream sundae look like?



THANK YOU