

CAREER POSSIBILITIES

WHERE TO GO FOR INFORMATION

PURDUE

IS

SOCIAL



ARE YOU:
 Friendly
 Helpful
 Idealistic
 Outgoing
 Understanding

CAN YOU:
 Teach/Train Others
 Express Yourself Clearly
 Lead a Group Discussion
 Mediate Disputes
 Plan and Supervise an Activity
 Cooperate Well with Others

DO YOU LIKE TO:
 Work in Groups
 Help People with Problems
 Participate in Meetings
 Do Volunteer Service
 Work with Young People
 Plan Team Sports



CENTER FOR CAREER OPPORTUNITIES
 STEWART CENTER ROOM 194
 49-43981

Listed below are some occupations you may want to explore. Why not start your search at the Career Resource Center (SCHL 240)?

Art/Music Therapist	Interior Designer
Attorney	Kindergarten Teacher
Child Care Worker	Mortgage Loan Consultant
Coach	Nurse
Community Service Administrator	Occupational Therapist
Counselor	Parole Officer
Customer Service Representative	Personnel Interviewer
Designer	Pharmacist
Dietitian	Physical Fitness Expert
Educational Administrator	Public Health Nurse
Environmental Health Engineer	Public Health Service Officer
Extension Agent	Psychologist
Foreign Service Officer	Speech & Audiologist Teacher
Gerontologist	Telecommunications Operator
	Youth Service Director
	Sales Representative
	Social Worker

ORGANIZATIONS AND INVOLVEMENTS

African Student Association
 Amateur Radio Club
 Archery Club
 Big Brothers/Big Sisters
 Billiards Club
 Black Greek Council
 Christian Student Center
 College Demos./Repub.
 CFS Student Council
 CO-OP Housing
 Fellowship of Christian Athletes
 Graduate Student Association
 Liberal Arts Student Council
 International Student Association
 Crazy 8's Square Dance
 Medieval Society
 Off Campus Student Coalition
 RHIT Management Society
 Residence Hall Council
 Reamer Club
 Sailing, Scuba, Ski & Snowboard Clubs
 Sign Language Club
 Student Host Organization

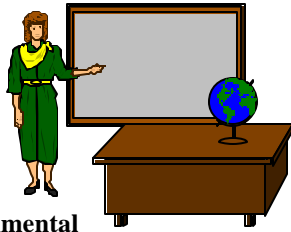
ACADEMIC ADVISORS
 (Specific to each school)
 CAREER COUNSELING
 Stewart Center, Room 194. 49-42655
 COUNSELING & DEVELOPMENT CENTER.. 49-49748
 OFFICE OF THE DEAN OF STUDENTS (ODOS)
 Schleman Hall of Student Services 49-41747
 ADAPTIVE PROGRAMS
 (Students with Disabilities)
 Student Services Annex One (SSA1) 49-41247
 EMERGENCY LOANS
 Schleman Hall of Student Services, Room 207.. 49-41237
 HORIZONS
 First Generation College Students
 Low Income Students
 Students With Disabilities
 Schleman Hall of Student, Room 230 49-47094
 OFF CAMPUS HOUSING
 Schleman Hall of Student Services, Room 207.. 49-47663
 PURDUE OFF CAMPUS STUDENT COALITION
 Stewart Center, Room 20..... N/A
 PERSONAL COUNSELING
 Office of the Dean of Students (ODOS)
 Schleman Hall of Student Services..... 49-41747
 Counseling and Development Center..... 49-49738
 Psychological Sciences Center
 Psychological Services Bldg..... 49-46905
 PUSHC Mental Health Services
 Student Health Center..... 49-41700
 SPAN PLAN PROGRAM (ODOS)
 Adult Learner Orientation & Re-entry Program
 Schleman Hall of Student Services, Room 207.. 49-41257
 STUDENT ACTIVITIES & ORGANIZATIONS (SAO)
 Schleman Hall of Student Services, Room 250.. 49-46724
 STUDENT SERVICES INFORMATION (SSINFO)
 SSINFO computers located on various sites around campus or access by using your PAC.
 CENTER FOR CAREER OPPORTUNITIES
 Stewart Center, Room 194..... 49-43981
 VOCATIONAL COUNSELING
 Academic Advisors
 (Specific to each school)

SOCIAL AREAS OF STUDY/MAJORS

AGRICULTURE

(AGAD 49-48469)

Agricultural Communication
Agricultural Education
Agricultural Finance
General Agriculture
International Agronomy
Natural Resources and Environmental Science
Public Horticulture
Wildlife



ENGINEERING

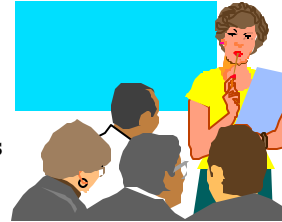
(ENAD 49-45345)

Civil Engineering
Construction Engineering & Management
Industrial Engineering
Interdisciplinary Engineering

HEALTH SCIENCES

(CIVL 49-41395)

Environmental Health
General Health Sciences
Industrial Hygiene
Medical Technology
Preallied Health
Pre-Occupational Therapy
Pre-Physical Therapy



LIBERAL ARTS

(LAEB 49-43670)

African-American Studies
Anthropology
Art Education
Athletic Training
Audiology & Speech Science
Communication
Creative Writing
Economics
English
English Education
Exercise & Fitness
Foreign Languages & Literature
Health & Safety Education
Health Promotion
Interior Design
Law & Society
Linguistics
Mass Communication

LIBERAL ARTS (continued)

Movement & Sports Science
Organizational Communication
Philosophy
Physical Education Teaching
Political Science
Psychology
Public Communication
Public Relations
Religious Studies
Sociology
Speech Communication & Theater Education
Telecommunication
Theatre

CONSUMER & FAMILY SCIENCES

(STON 49-48533)

Dietetics
Early Childhood Education & Intervention
Family & Consumer Science Education
Financial Counseling and Planning
Foods and Nutrition in Business
Food Science
Food Service and Lodging Supervision
Hospitality & Tourism Management
Individual & Family Studies
Nutrition Fitness & Health
Occupational Consumer & Family Science Education
Retail Management
Youth, Adult, and Family Services



EDUCATION

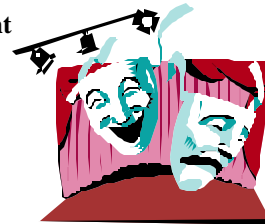
(LAEB 49-47962)

Elementary Education
Social Studies Education
Special Education

MANAGEMENT

(KRAM 49-44343)

Management
Industrial Management



PHARMACY

(RHPH 49-41357)

Pharmacy

TECHNOLOGY

(KNOY 49-44935)

Aviation Administration
Computer Information Systems
Organizational Leadership and Supervision
Technology Education

