

CAREER POSSIBILITIES

Listed below are some occupations you may want to explore. Why not start your search at the Career Resource Center (SCHL 240)?

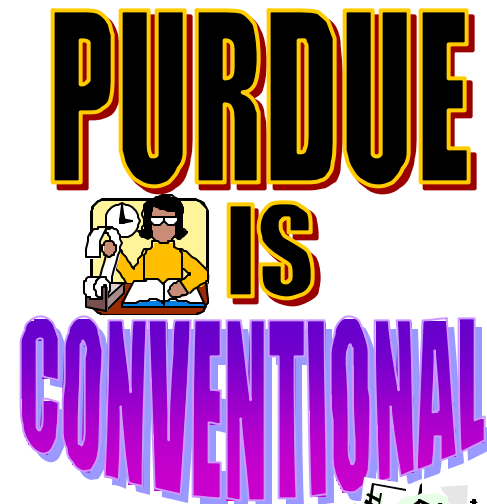
Accountant	Mathematics Teacher
Actuary	Paralegal Assistant
Administrative Assistant	Phototypesetter
Air Traffic Controller	Proofreader
Auditor	Quality Analyst
Bank Teller, Manager	Real Estate Title Examiner
Bookkeeper	Registrar
Business Teacher	Safety Inspector
Cartographer	Software Developer
Computer Analyst	Software Engineer
Computer Programmer	Statistician
Computer Operator	Surveyor
Computer Science Teacher	Tax Consultant
Corrections Officer	Travel Agent
Cost Analyst	Transit Manager
Court Reporter	
Credit Analyst	
Customer Service Representative	
Detective/Police Officer	
Dietician	
Financial Analyst	
Fire Inspector	
Industrial Arts Teacher	
Insurance Agent	
Inventory Controller	
Librarian	
Market Research Analyst	

ORGANIZATIONS AND INVOLVEMENTS

Accounting Club
Actuary Club
Agricultural Economics Club
Beta Alpha Psi
Bata Gamma Sigma
Collegiate Financial Planners Association
Finance Club
Macro's
Marketing Association
School of Management Council
Society of Professional Engineers
Southwestern Sales & Success Club

WHERE TO GO FOR INFORMATION

ACADEMIC ADVISORS	
(Specific to each school)	
CAREER COUNSELING	
Stewart Center, Room 194..	49-42655
COUNSELING & DEVELOPMENT CENTER..	49-49748
OFFICE OF THE DEAN OF STUDENTS (ODOS)	
Schleman Hall of Student Services	49-41747
ADAPTIVE PROGRAMS	
(Students with Disabilities)	
Student Services Annex One (SSA1)	49-41247
EMERGENCY LOANS	
Schleman Hall of Student Services, Room 207..	49-41237
HORIZONS	
First Generation College Students	
Low Income Students	
Students With Disabilities	
Schleman Hall of Student, Room 230	49-47094
OFF CAMPUS HOUSING	
Schleman Hall of Student Services, Room 207..	49-47663
PURDUE OFF CAMPUS STUDENT COALITION	
Stewart Center, Room 20.....	N/A
PERSONAL COUNSELING	
Office of the Dean of Students (ODOS)	
Schleman Hall of Student Services.....	49-41747
Counseling and Development Center.....	49-49738
Psychological Sciences Center	
Psychological Services Bldg.....	49-46905
PUSHC Mental Health Services	
Student Health Center.....	49-41700
SPAN PLAN PROGRAM (ODOS)	
Adult Learner Orientation & Re-entry Program	
Schleman Hall of Student Services, Room 207..	49-41257
STUDENT ACTIVITIES & ORGANIZATAIONS (SAO)	
Schleman Hall of Student Services, Room 250..	49-46724
STUDENT SERVICES INFORMATION (SSINFO)	
SSINFO computers located on various sites around campus or access by using your PAC.	
CENTER FOR CAREER OPPORTUNITIES	
Stewart Center, Room 194.....	49-43981



ARE YOU:
Well Organized

Accurate
Numerically Inclined
Methodical
Conscientious
Efficient

CAN YOU:

Work Well Within a System
Do a Lot of Paperwork in a Short Time
Keep Accurate Records
Use a Computer Terminal
Write Effective Business Letters

DO YOU LIKE TO:

Follow Clearly Defined Procedures
Use Data Processing Equipment
Work with Numbers
Type or Take Shorthand
Be Responsible for Details

CONVENTIONAL AREAS OF STUDY/MAJORS

AGRICULTURE

(AGAD 49-48469)

Agribusiness Management
Agricultural Communication
Agricultural Economics
Agricultural Finance
Agricultural Systems Management
Agronomic Business & Marketing
Animal Agribusiness
Applied Meteorology
Crop Protection
Farm Management
Food Industry Marketing & Management
Food Manufacturing Operations
Food Process Engineering
General Agriculture
Quantitative Agricultural Economics
Wood Products Manufacturing Technology



HEALTH SCIENCES

(CIVL 49-41419)

Environmental Health Sciences
General Health Science
Health Physics
Industrial Hygiene
Medical Technology
Pre-allied Health

LIBERAL ARTS

(LAEB 49-43670)

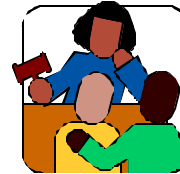
African-American Studies
Anthropology
Art History
Economics
English
Foreign Language & Literature
General Communication
History
Law and Society
Linguistics
Mass Communication
Medieval Studies
Organizational Communication
Professional Writing
Philosophy
Political Science
Psychological Sciences
Religious Studies
Sociology



MANAGEMENT

(KRAN 49-44343)

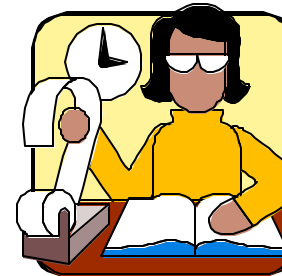
Accounting
Economics
Industrial Management
Management



PHARMACY

(RHPH 49-41357)

Pharmaceutical Sciences



SCIENCE

(MATH 49-41771)

Actuarial Science
Mathematics
Computer Science
Statistics

CONSUMER & FAMILY SCIENCES

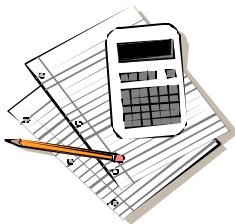
(STON 49-48533)

Dietetics
Financial Counseling & Planning
Food Science
Food Service & Lodging Supervision

EDUCATION

(LAEB 49-45345)

Elementary Education
Social Studies Education
Special Education



ENGINEERING

(ENAD 49-43670)

Agricultural & Biological Engineering
Computer Engineering
Construction Engineering & Management
Electrical Engineering
Industrial Engineering
Interdisciplinary Engineering
Land Surveying Engineering

TECHNOLOGY

(KNOY 49-44935)

Aviation Technology
Computer Information Systems
Flight
Industrial Technology
Organizational Leadership & Supervision
Computer Graphics Technology
Building Construction Management Technology
Computer Technology
Telecommunications & Networking Technology

