

CAREER POSSIBILITIES

Listed below are some occupations you may want to explore. Why not start your search at the Center for Career Opportunities (STEW 194)?

Architect
 Artist
 Cartographer
 Cartoonist
 Chef
 Child Life Specialist
 Critic/Reviewer
 Designer
 Editorial Assistant
 Fashion Illustrator
 Fashion Model
 Foreign Language Interpreter
 Graphic Designer
 Homecare Caseworker
 Interior Decorator
 Journalist
 Kindergarten Teacher
 Landscape Architect
 Librarian
 Museum Curator
 Organizational Executive
 Pattern Designer
 Performer
 Photographer
 Recreation Specialist
 Writer

ORGANIZATIONS AND INVOLVEMENTS

Amateur Radio Club
 Debris
 Entrepreneurship & Investment Club
 Medieval Society
 Dungeons of Purdue
 Egyptian Student Association
 Industrial Design Society of American
 Juggling Club
 Krazy 8's Square Dance Club
 Repertory Dance Company
 Red Brick Mime Theatre
 Student National Art Education Association (NAEA)

WHERE TO GO FOR INFORMATION

ACADEMIC ADVISORS
 (Specific to each school)

ADAPTIVE PROGRAMS
 (Students with Disabilities)
 YONG 830)..... 49-41247

CAREER COUNSELING
 Stewart Center, Room 194..... 49-43981

CENTER FOR CAREER OPPORTUNITIES
 Stewart Center, Room 194..... 49-43981

COUNSELING & DEVELOPMENT CENTER..... 49-49748

EMERGENCY LOANS
 Schleman Hall, Room 207..... 49-41237

HORIZONS
 First Generation College Students
 Low Income Students
 Students With Disabilities
 Schleman Hall, Room 230 49-47094

OFF CAMPUS HOUSING
 Schleman Hall, Room 207..... 49-47663

OFFICE OF THE DEAN OF STUDENTS (ODOS)
 Schleman Hall 49-41747

PERSONAL COUNSELING
 Office of the Dean of Students (ODOS)
 Schleman Hall 49-41747
 Counseling and Guidance Center..... 49-49738
 Counseling and Psychological Services (CAPS)
 Psychological Services Bldg..... 49-46905

PURDUE OFF CAMPUS STUDENT COALITION
 Stewart Center, Room 20..... N/A

PUSHC Mental Health Services
 Student Health Center..... 49-41700

SPAN PLAN PROGRAM (ODOS)
 Adult Learner Orientation & Re-entry Program
 Schleman Hall, Room 207..... 49-41257

STUDENT ACTIVITIES & ORGANIZATIONS (SAO)
 Schleman Hall, Room 250..... 49-46724

STUDENT SERVICES INFORMATION (SSINFO)
 SSINFO computers located on various sites around campus or access by using your PAC.



ARE YOU:
 Creative
 Intuitive
 Imaginative
 Innovative
 An Individualist

CAN YOU:
 Sketch, Draw, Paint
 Play a Musical Instrument
 Write Stories, Poetry, Music
 Design Fashions or Interiors

DO YOU LIKE TO:
 Attend Concerts, Theaters,
 & Art Exhibits
 Read Fiction, Plays, Poetry
 Work on Crafts
 Take Photographs
 Express Yourself Creatively



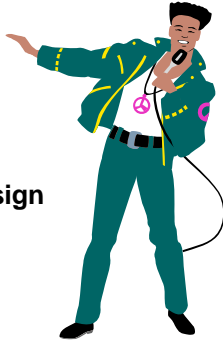
ARTISTIC AREAS OF STUDY / MAJORS



AGRICULTURE

(AGAD 49-48469)

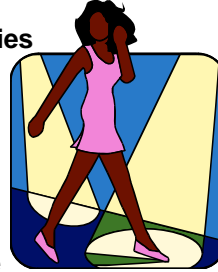
Agricultural Communication
Agriculture Education
Landscape Architecture
Landscape Horticulture & Design
Public Horticulture
Sales and Marketing



LIBERAL ARTS

(BRNG 49-43670)

Acting
African American Studies
Anthropology
Art Education
Art History
Asian Studies
Classic Studies
Communication
Comparative Literature
Consumer Product Design
Creative Writing
Economics
English
English Education
Film & Video Studies
Fine Arts
Foreign Languages Education
Foreign Languages & Literature
History
Interpersonal Communication
Jewish Studies
Journalistic Communication
Linguistics
Mass Communication
Media Technology & Society
Medieval Studies
Organizational Communication
Philosophy
Photography
Political Science
Professional Writing
Psychology



LIBERAL ARTS (con't)

Public Relations &
Rhetorical Advocacy
Space Management Design
Theatre
Visual Communication
(Graphic) Design



CONSUMER & FAMILY SCIENCE

(STON 49-48533)

Apparel Design & Technology
Early Childhood Education & Exceptional
Needs
Family & Consumer Science Education
Retail Management
Hospitality & Tourism Management



EDUCATION

(BRNG 49-47962)

Elementary Education
Social Studies Education
Special Education

ENGINEERING

(ENAD 49-45345)

Civil Engineering
Interdisciplinary Engineering



TECHNOLOGY

(KNOY 49-44935)

Computer Graphics
Technology