

What is Windows Firewall?

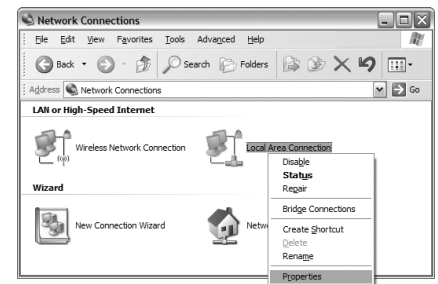
Windows Firewall is a security system built into Windows XP to protect your computer from unauthorized remote access. Purdue faculty and staff whose office computers are supported by an IT department should check with their desktop support unit before changing any firewall settings on Purdue office machines.

Why should I enable the Windows XP Firewall?

This firewall can help protect your computer from unauthorized remote access by people trying to acquire your information on your machine or infect it with malware such as worms and viruses. For more information on Automatic Updates and security resources please refer to the Security Checklist located at <http://www.itap.purdue.edu/security/files/securityChecklist.pdf>.

How to enable Windows Firewall

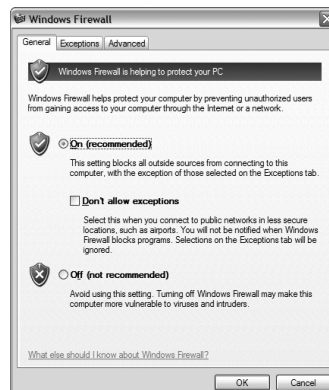
1. Click *Start*, *Settings*, and then click *Control Panel*.
2. Select *Network Connections*.
3. Right-click on your network and select *Properties*.
4. Select the *Advanced* tab.
5. Click on *Settings*.
6. Click the button next to *On (recommended)*.
7. Click *OK* in both windows to exit.



Step 3



Steps 4 - 5



Step 6