

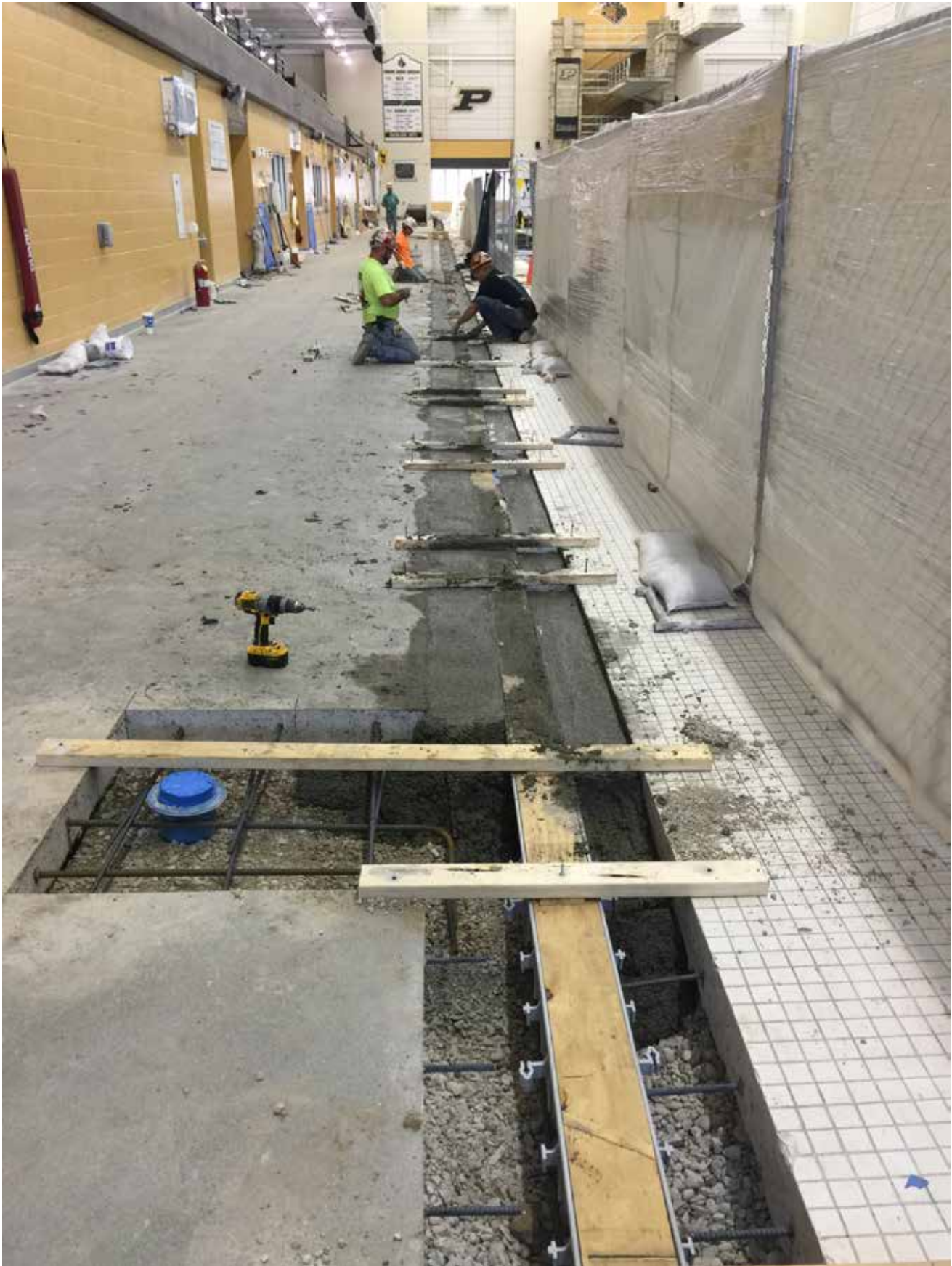
COMP & DIVE POOL DRAIN AND PLATFORM REPAIRS



Removed 12" of concrete and the old perimeter drain system.



New drain system framed and set in place; new re-bar drilled into existing concrete and also laid around/under new drain.



New concrete poured, leveled and prepared for new epoxy coating and tile.



Dive Tower Prep



Portion of 1m springboard platform concrete removed and rebar trimmed back



Another section of concrete on 1m springboard platform removed and rebar repair



Sanding/scrubbing machine preparing for new epoxy floor



New epoxy floor