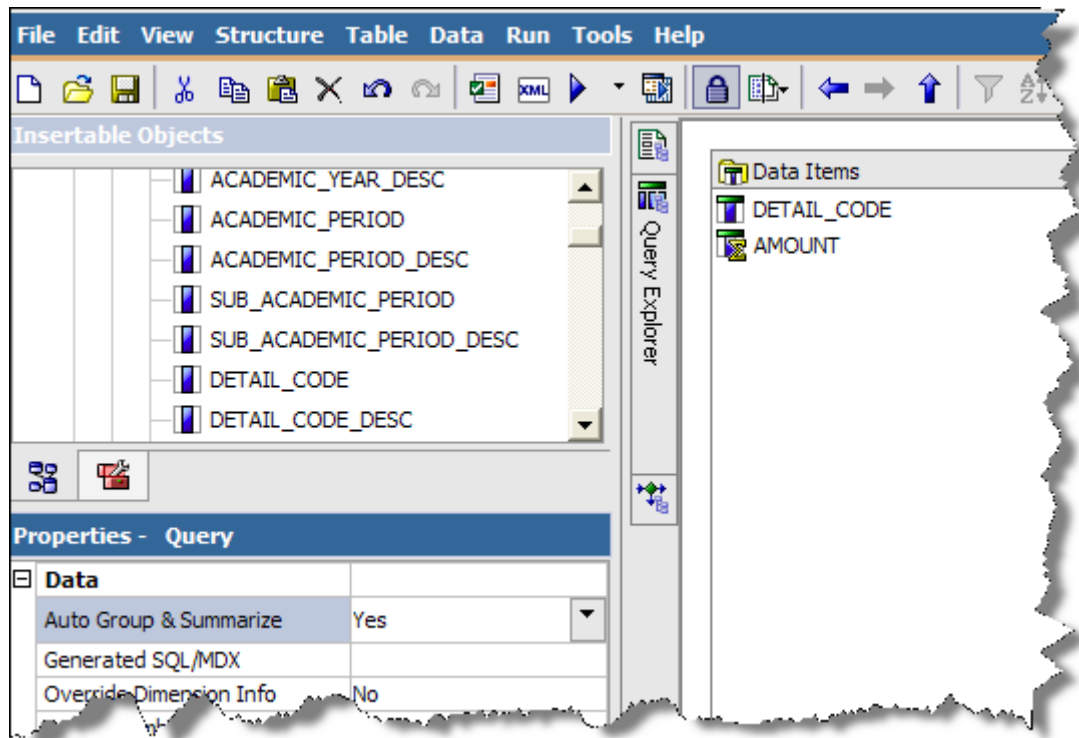


Summarization problems

When there's a problem with aggregation, there are multiple places to look for aggregation problems. One place is the aggregation associated with the Query itself.

Open the query. If the item to be used for a summary (in this case **AMOUNT**) has a sigma in the icon, it has a summarization built into it. See the sigma in the image below under **Data Items**.



To find out if this is affecting your results, in the properties for the query, change **Auto Group and Summarize** from **Yes** to **No**.

The report works.

Before automatically going to this property, the user should always try adding individualized detail (in this case we did the ID) and **view tabular data** rather than run the report. This will give all data and let the user know if the report is working correctly when the detail is distinct. If that works correctly, then look at the query data summarization and investigate there.