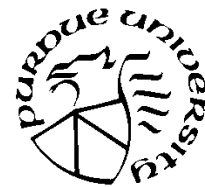


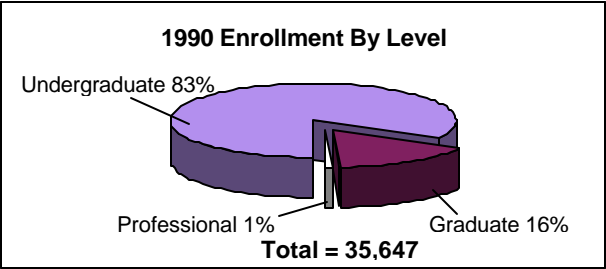
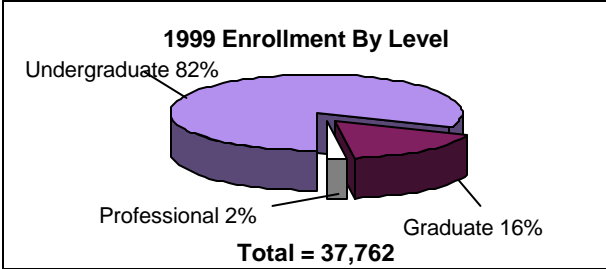
# Purdue University West Lafayette Student Profile Summary Fall 1999-00



## Fall Enrollment - Ten-Year Comparison

### Enrollment By School

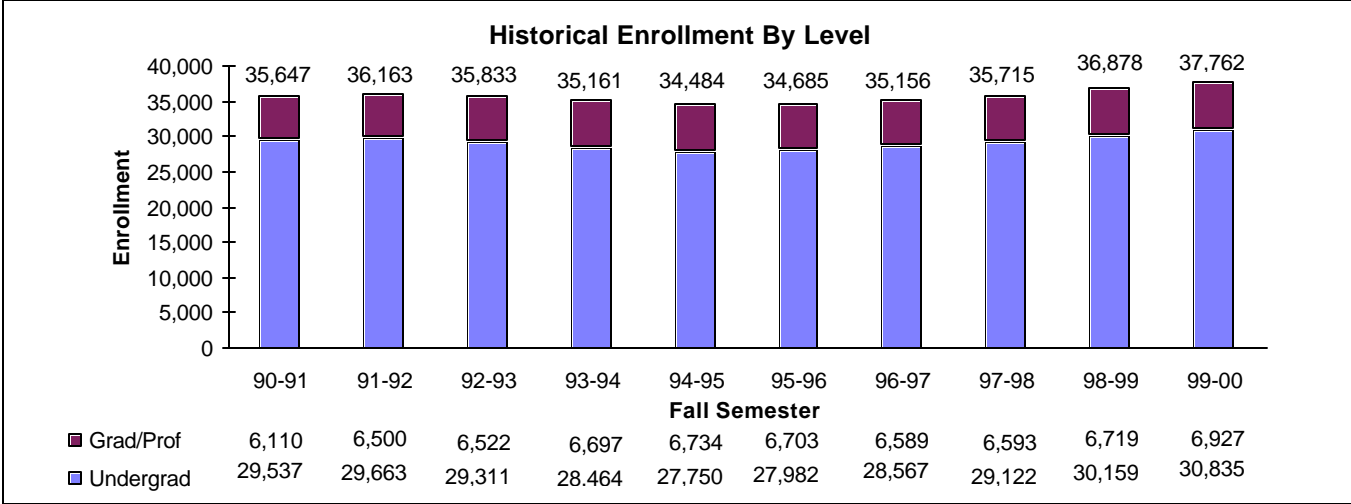
<b>Undergraduate</b>	<b>1999</b>	<b>1990</b>	<b>% Change</b>
Agriculture	2,446	1,849	32%
Consumer & Family Sciences	1,763	2,125	-17%
Education	1,395	1,281	9%
Engineering	6,036	6,319	-4%
Liberal Arts	5,925	6,261	-5%
Management	2,471	2,226	11%
Pharmacy, Nursing & Health Sci	1,605	1,731	-7%
Science	3,123	2,811	11%
Technology	4,319	3,605	20%
Veterinary Medicine	126	44	186%
Undergraduate Studies Program	502	N/A	N/A
University Division	628	447	40%
Nondegree	496	838	-41%
<b>Graduate</b>			
Agriculture	467	365	28%
Consumer & Family Sciences	175	239	-27%
Education	548	569	-4%
Engineering	1,896	1,776	7%
Liberal Arts	1,045	962	9%
Management	628	442	42%
Pharmacy, Nursing & Health Sci	133	153	-13%
Science	895	1,030	-13%
Technology	137	64	114%
Veterinary Medicine	71	49	45%
Unassigned	142	192	-26%
<b>Professional</b>			
Pharmacy, Nursing & Health Sci	533	33	1515%
Veterinary Medicine	257	236	9%



### Students By Classification

<b>Classification</b>	<b>1999</b>	<b>1990</b>	<b>% Change</b>
Freshman <sup>1</sup> (1s & 2s)	8,248	6,960	19%
Sophomore (3s & 4s)	8,073	8,098	<1%
Junior (5s & 6s)	7,001	7,111	-2%
Senior (7s, 8s & 9s)	6,978	6,530	7%
Nondegree	535	838	-36%
<b>TOTAL UNDERGRADUATE</b>	<b>30,835</b>	<b>29,537</b>	<b>4%</b>
<b>TOTAL GRADUATE/PROF.</b>	<b>6,927</b>	<b>6,110</b>	<b>13%</b>
<b>GRAND TOTAL</b>	<b>37,762</b>	<b>35,647</b>	<b>6%</b>

<sup>1</sup> Freshman includes first-time, first-year students and continuing first-year students.



For more information contact:  
(765) 494-0292  
reg-research@purdue.edu

Office of the Registrar - Research  
Purdue University  
1095 Hovde Hall, West Lafayette, IN 47907-1095  
(765) 494-0292

## Fall Enrollment - Ten-Year Comparison

### Ethnic Enrollment

<u>Undergraduate</u>	<u>1999</u>	<u>1990</u>	<u>% Change</u>
African American	1,052	1,060	-1%
American Indian	152	114	33%
Asian American	1,007	843	19%
Hispanic American	626	473	32%
<b><u>Graduate &amp; Professional</u></b>			
African American	233	118	97%
American Indian	26	22	18%
Asian American	268	184	46%
Hispanic American	161	92	75%
<b>TOTAL ETHNIC</b>	<b>3,525</b>	<b>2,906</b>	<b>21%</b>

### International Enrollment

	<u>1999</u>	<u>1990</u>	<u>% Change</u>
Undergraduate	1,817	585	211%
Graduate/Professional	2,316	1,732	34%
<b>TOTAL INTERNATIONAL</b>	<b>4,133</b>	<b>2,317</b>	<b>78%</b>

### Residency Enrollment

<u>Undergraduate</u>	<u>1999</u>	<u>1990</u>	<u>% Change</u>
Residents	22,388	21,114	6%
Nonresidents	8,447	8,423	<1%
<b><u>Graduate &amp; Professional</u></b>			
Residents	2,067	2,403	-14%
Nonresidents	4,860	3,707	31%

### Men/Women Enrollment

<u>Undergraduate</u>	<u>1999</u>	<u>1990</u>	<u>% Change</u>
Men	17,497	16,566	6%
Women	13,338	12,971	3%
<b><u>Graduate &amp; Professional</u></b>			
Men	4,186	3,884	8%
Women	2,741	2,226	23%

### Age Distribution

<u>Undergraduate</u>	<u>1999</u>	<u>1990</u>	<u>% Change</u>
25 & Under	29,139	27,477	6%
Over 25	1,696	2,060	-18%
<b><u>Graduate &amp; Professional</u></b>			
25 & Under	2,723	2,216	23%
Over 25	4,204	3,894	8%

### Full-Time/Part-Time Enrollment

<u>Undergraduate</u>	<u>1999</u>	<u>1990</u>	<u>% Change</u>
Full-Time	28,768	26,792	7%
Part-Time	2,067	2,745	-25%
<b><u>Graduate &amp; Professional</u></b>			
Full-Time	4,957	4,147	20%
Part-Time	1,970	1,963	<1%

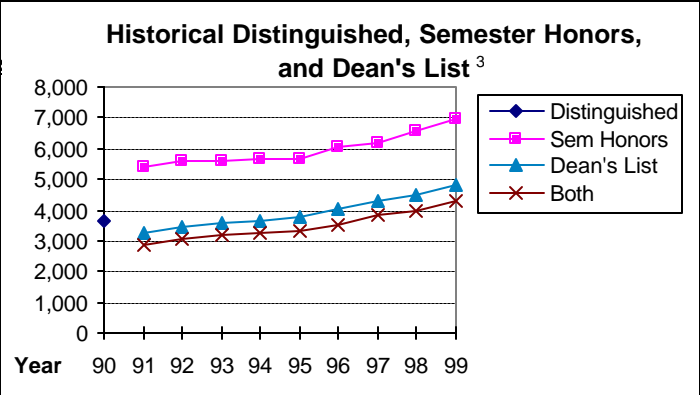
### SAT 25th-75th Percentile Range <sup>1</sup>

	<u>1999</u>	<u>1990</u>
Math	500-630	510-630
Verbal	480-590	480-590
Combined	990-1210	1000-1200

## Fall Academic Performance

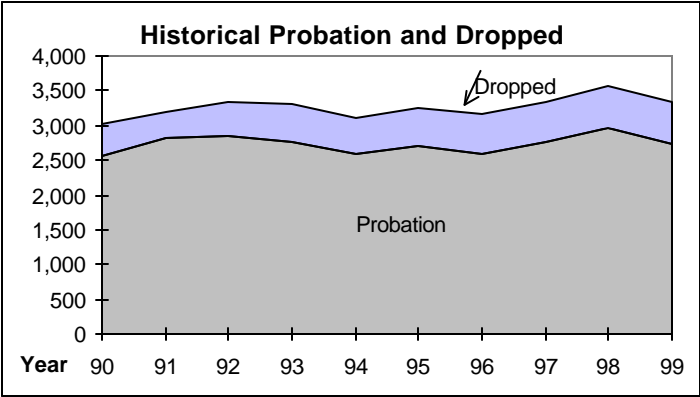
### Fall 1999 Performance By School

<u>School</u>	<u>Probation</u>	<u>Dropped</u>	<u>Both Sem Honor &amp; Dean's List</u>
Agriculture	9%	2%	11%
Consumer & Family Sci	7%	2%	12%
Education	4%	0%	20%
Engineering	8%	2%	20%
Liberal Arts	11%	2%	13%
Management	7%	1%	16%
Pharmacy, Nur & Hlth Sci	7%	1%	17%
Science	11%	2%	16%
Technology	9%	2%	9%
Veterinary Medicine	6%	1%	11%
Undergrad Studies Prog	11%	3%	14%
University Division	13%	14%	2%
Nondegree	12%	1%	3%



### Fall 1999 Performance By Classification

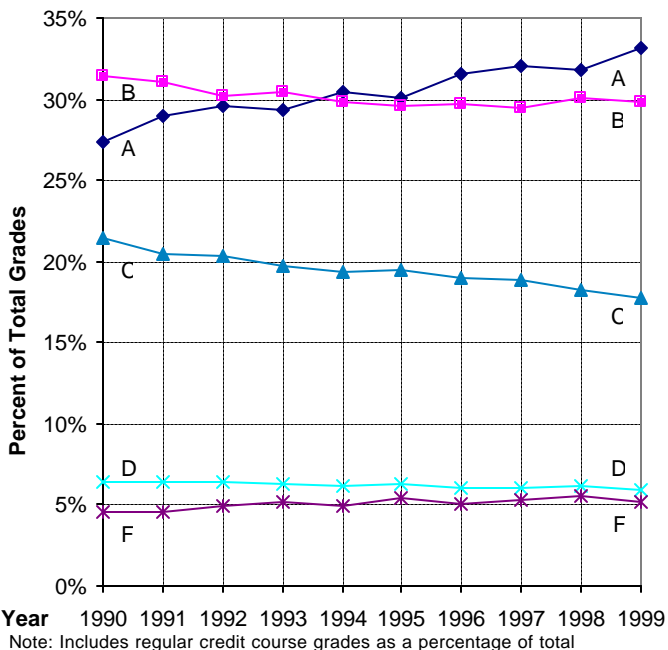
<u>Classification</u>	<u>Probation</u>	<u>Dropped</u>	<u>Sem Honors &amp;/or Dean's List</u>
Freshmar. <sup>2</sup> (1s & 2s)	697	105	1,530
Sophomore (3s & 4s)	1,028	269	930
Junior (5s & 6s)	573	155	861
Senior (7s, 8s & 9s)	376	72	941
Nondegree	64	5	21
<b>TOTAL UNDERGRAD</b>	<b>2,738</b>	<b>606</b>	<b>4,283</b>



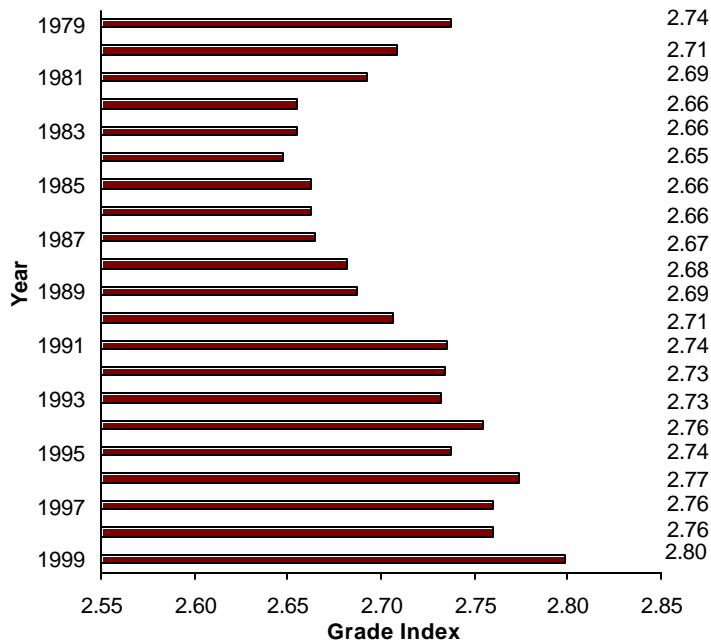
<sup>1</sup> The SAT scores have been converted to the recentered  
<sup>2</sup> Freshman includes first-time, first-year students and continuing first-year  
<sup>3</sup> In 1991, Distinguished was separated into Semester Honors and Dean's

### Fall Academic Performance

Grade Distribution By Fall Semester



Average Undergraduate Semester Grade Index By Fall Semester



### Retention

Fall 1993 Beginning Students<sup>1</sup>

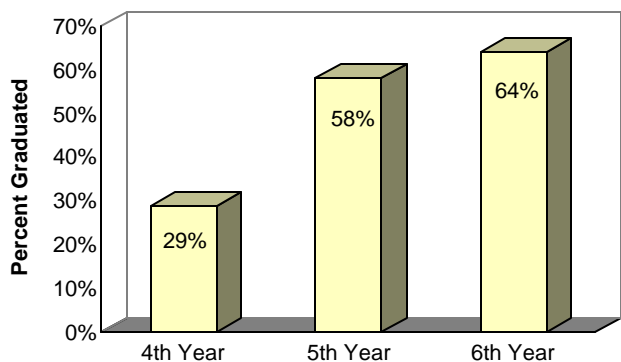
Year	STATUS			
	Enrollment Continued	Graduated <sup>2</sup>	Voluntarily Withdrew	Academic Dismissal
After Year 1	82%	0%	14%	4%
After Year 2	71%	<1%	21%	8%
After Year 3	67%	1%	23%	9%
After Year 4	38%	29%	23%	10%
After Year 5	9%	58%	24%	10%
After Year 6	3%	64%	24%	10%

N=6,071

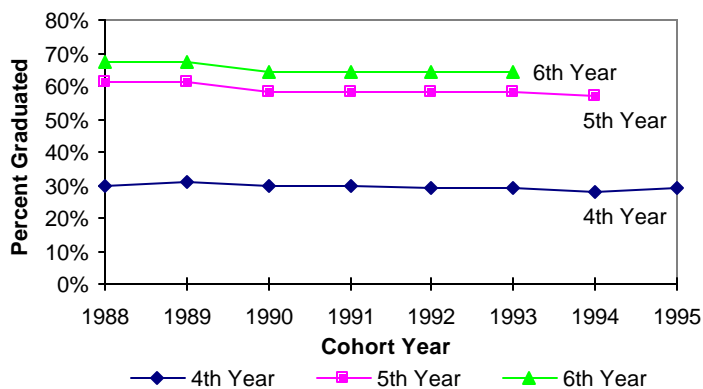
Historical Graduation Rates

Fall Beginners	Beginning Enrollment	First-Year Retention Rate	Graduated Within 4 Years	Graduated Within 5 Years	Graduated Within 6 Years
1988	7,142	85%	30%	61%	67%
1989	6,470	85%	31%	61%	67%
1990	5,861	83%	30%	58%	64%
1991	6,029	83%	30%	58%	64%
1992	5,928	83%	29%	58%	64%
1993	6,071	82%	29%	58%	64%
1994	5,941	83%	28%	57%	~
1995	6,334	83%	29%	~	~

1993 Beginning Students' Degrees Completed



Historical Graduation Rates



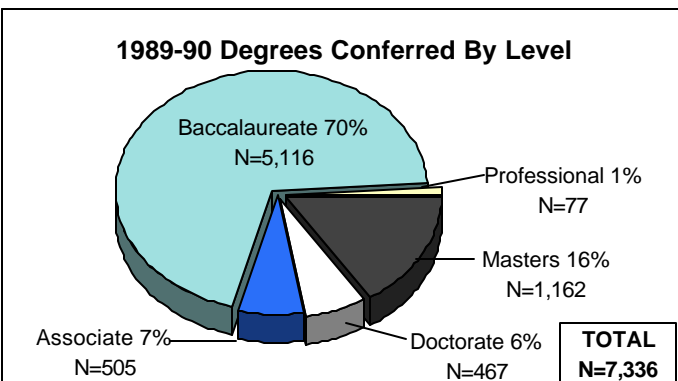
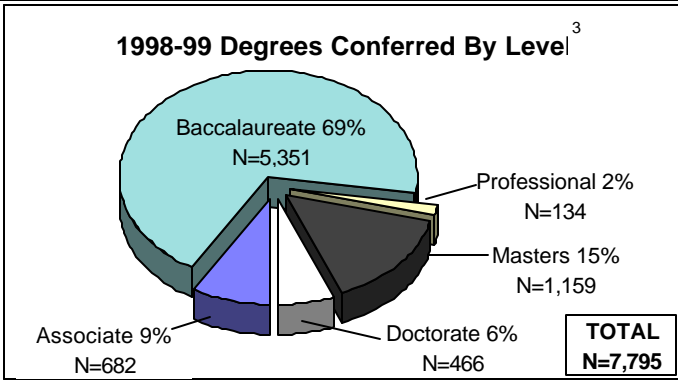
<sup>1</sup> Degree seeking Freshman 1s who enrolled in summer or fall 1993.

<sup>2</sup> Includes terminal associate and baccalaureate degrees.

## Degrees Conferred - Ten-Year Comparison <sup>1</sup>

### Degrees By School

<u>Associate &amp; Baccalaureate</u>	<u>1998-99</u>	<u>1989-90</u>	<u>% Change</u>
Agriculture	510	348	47%
Consumer & Family Sciences	422	552	-24%
Education	226	185	22%
Engineering	1,093	1,128	-3%
Liberal Arts	974	1,017	-4%
Management	486	441	10%
Pharmacy, Nursing & Health Sci	384	277	39%
Science	401	421	-5%
Technology	1,505	1,232	22%
Veterinary Medicine	32	20	60%
<u>Masters &amp; Doctorate</u>			
Agriculture	127	117	9%
Consumer & Family Sciences	50	57	-12%
Education	114	155	-26%
Engineering	507	565	-10%
Liberal Arts	226	211	7%
Management	308	222	39%
Pharmacy, Nursing & Health Sci	47	25	88%
Science	203	251	-19%
Technology	30	12	150%
Veterinary Medicine	13	13	0%
<u>Professional &amp; Educational Specialist</u>			
Pharmacy, Nursing & Health Sci	70	21	233%
Veterinary Medicine	64	56	14%
Educational Specialist	3	9	-67%



### Ethnic Degrees

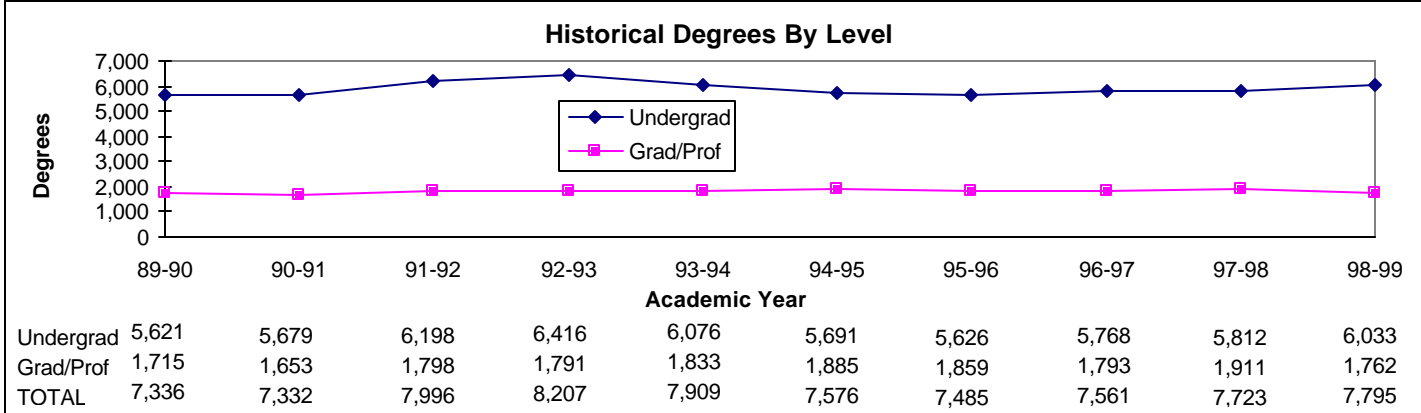
<u>Associate &amp; Baccalaureate</u>	<u>1998-99</u>	<u>1989-90</u>	<u>% Change</u>
African American	224	142	58%
American Indian	25	8	213%
Asian American	226	114	98%
Hispanic American	119	68	75%
<u>Masters &amp; Doctorate</u>			
African American	53	32	66%
American Indian	2	3	-33%
Asian American	76	43	77%
Hispanic American	38	21	81%
<u>Professional &amp; Educational Specialist</u>			
African American	1	0	100%
American Indian	0	0	0%
Asian American	4	0	400%
Hispanic American	4	4	0%
<b>TOTAL ETHNIC</b>	<b>772</b>	<b>435</b>	<b>77%</b>

### Degrees By Level

	<u>1998-99</u>	<u>1989-90</u>	<u>% Change</u>
Associate	682	505	35%
Baccalaureate	5,351	5,116	5%
Professional	134	77	74%
Educational Specialist	3	9	-67%
Masters	1,159	1,162	<1%
Doctorate	466	467	<1%
<b>TOTAL DEGREES</b>	<b>7,795</b>	<b>7,336</b>	<b>6%</b>

### International Degrees

	<u>1998-99</u>	<u>1989-90</u>	<u>% Change</u>
Associate & Baccalaureate	297	93	219%
Professional & Educational Specialist	1	1	0%
Masters & Doctorate	577	447	29%
<b>TOTAL INTERNATIONAL</b>	<b>875</b>	<b>541</b>	<b>62%</b>



<sup>1</sup> The degrees awarded as of June 1, 1989 & June 1, 1998.      <sup>3</sup> Excludes Educational Specialist degrees (N=3) <1% for 1998-99, (N=9) <1% for 1989-90.

<sup>2</sup> One MSPPA Degree awarded in 1989-90 not included.