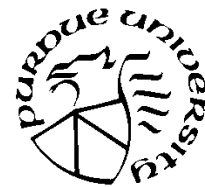


# Purdue University West Lafayette Student Profile Summary Fall 1998-99

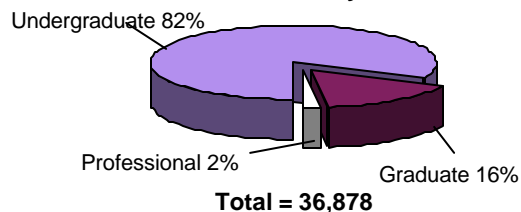


## Fall Enrollment - Ten-Year Comparison

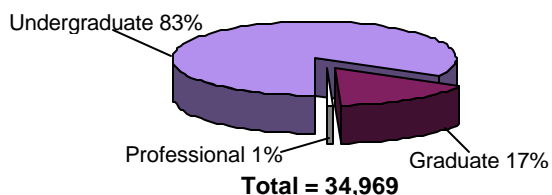
### Enrollment By School

<u>Undergraduate</u>	<u>1998</u>	<u>1988</u>	<u>% Change</u>
Agriculture	2,510	1,721	46%
Consumer & Family Sciences	1,754	2,155	-19%
Education <sup>1</sup>	1,337	1,148	16%
Engineering	5,881	6,240	-6%
Liberal Arts <sup>1</sup>	5,783	5,599	3%
Management	2,386	2,464	-3%
Pharmacy, Nursing & Health Sci	1,656	1,712	-3%
Science	3,068	2,966	3%
Technology	4,228	3,548	19%
Veterinary Medicine	88	41	115%
Undergraduate Studies Program	424	N/A	N/A
University Division	564	621	-9%
Nondegree	480	689	-30%
<u>Graduate</u>			
Agriculture	451	370	22%
Consumer & Family Sciences	193	222	-13%
Education <sup>1</sup>	545	530	3%
Engineering	1,871	1,917	-2%
Liberal Arts <sup>1</sup>	1,062	908	17%
Management	567	431	32%
Pharmacy, Nursing & Health Sci	132	143	-8%
Science	870	1061	-18%
Technology	122	31	294%
Veterinary Medicine	72	56	29%
Unassigned	128	141	-9%
<u>Professional</u>			
Pharmacy, Nursing & Health Sci	447	32	1,297%
Veterinary Medicine	259	223	16%

### 1998 Enrollment By Level



### 1988 Enrollment By Level



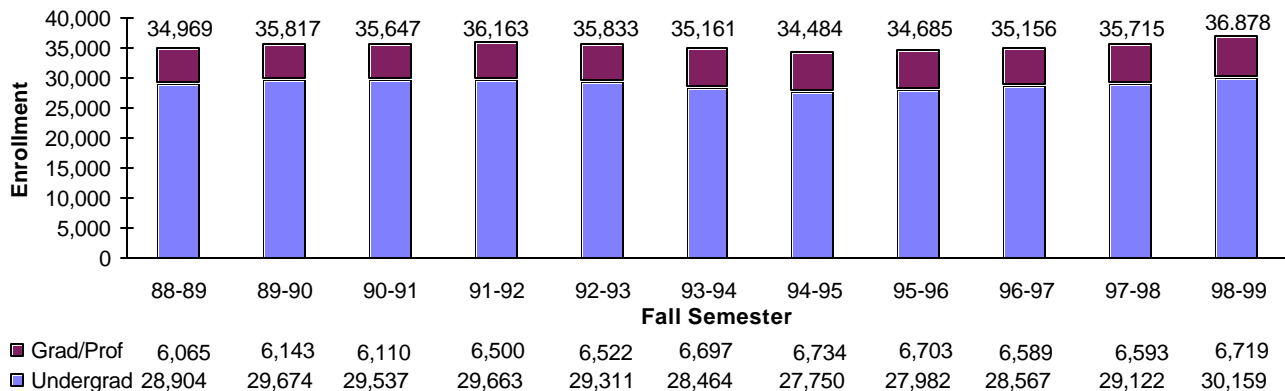
### Students By Classification

<u>Classification</u>	<u>1998</u>	<u>1988</u>	<u>% Change</u>
Freshman <sup>2</sup> (1s & 2s)	7,962	8,313	-4%
Sophomore (3s & 4s)	8,086	7,741	4%
Junior (5s & 6s)	6,893	6,147	12%
Senior (7s, 8s & 9s)	6,709	6,014	12%
Nondegree	509	689	-26%
<b>TOTAL UNDERGRADUATE</b>	<b>30,159</b>	<b>28,904</b>	<b>4%</b>
<b>TOTAL GRADUATE/PROF.</b>	<b>6,719</b>	<b>6,065</b>	<b>11%</b>
<b>GRAND TOTAL</b>	<b>36,878</b>	<b>34,969</b>	<b>5%</b>

<sup>1</sup> In 1988, the School of Liberal Arts and the School of Education were included together in the School of Humanities, Social Sciences, and

<sup>2</sup> Freshman includes first-time, first-year students and continuing first-year students.

### Historical Enrollment By Level



For more information contact:  
(765) 494-0292  
research@reg.purdue.edu

Office of the Registrar - Research  
Purdue University  
1095 Hovde Hall, West Lafayette, IN 47907-1095  
(765) 494-0292

## Fall Enrollment - Ten-Year Comparison

### Ethnic Enrollment

<u>Undergraduate</u>	<u>1998</u>	<u>1988</u>	<u>% Change</u>
African American	1,109	976	14%
American Indian	167	94	78%
Asian American	1,018	711	43%
Hispanic American	614	412	49%
<b><u>Graduate &amp; Professional</u></b>			
African American	199	123	62%
American Indian	25	22	14%
Asian American	266	172	55%
Hispanic American	155	68	128%
<b>TOTAL ETHNIC</b>	<b>3,553</b>	<b>2,578</b>	<b>38%</b>

### Men/Women Enrollment

<u>Undergraduate</u>	<u>1998</u>	<u>1988</u>	<u>% Change</u>
Men	17,160	16,453	4%
Women	12,999	12,451	4%
<b><u>Graduate &amp; Professional</u></b>			
Men	4,039	3,978	2%
Women	2,680	2,087	28%

### Full-Time/Part-Time

<u>Undergraduate</u>	<u>1998</u>	<u>1988</u>	<u>% Change</u>
Full-Time	28,095	26,351	7%
Part-Time	2,064	2,553	-19%
<b><u>Graduate &amp; Professional</u></b>			
Full-Time	4,693	4,079	15%
Part-Time	2,026	1,986	2%

### International Enrollment

	<u>1998</u>	<u>1988</u>	<u>% Change</u>
Undergraduate	1,575	470	235%
Graduate/Professional	2,151	1,650	30%
<b>TOTAL INTERNATIONAL</b>	<b>3,726</b>	<b>2,120</b>	<b>76%</b>

### Residency Enrollment

<u>Undergraduate</u>	<u>1998</u>	<u>1988</u>	<u>% Change</u>
Residents	22,180	20,719	7%
Nonresidents	7,979	8,185	-3%
<b><u>Graduate &amp; Professional</u></b>			
Residents	2,060	2,682	-23%
Nonresidents	4,659	3,383	38%

### Age Distribution

<u>Undergraduate</u>	<u>1998</u>	<u>1988</u>	<u>% Change</u>
25 & Under	28,302	26,948	5%
Over 25	1,857	1,956	-5%
<b><u>Graduate &amp; Professional</u></b>			
25 & Under	2,594	2,385	9%
Over 25	4,125	3,680	12%

### SAT 25th-75th Percentile Range<sup>1</sup>

	<u>1998</u>	<u>1988</u>
Math	500-630	500-620
Verbal	480-590	480-600
Combined	990-1,200	990-1,200

## Fall Academic Performance

### Fall 1998 Performance By School

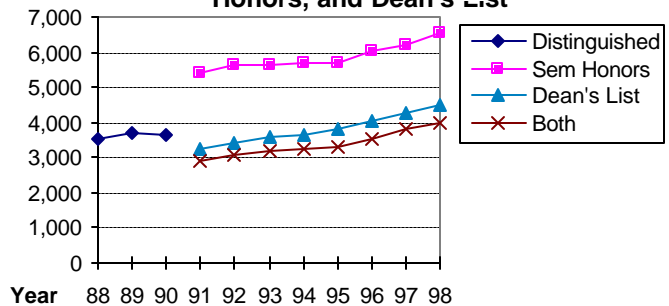
<u>School</u>	<u>Probation</u>	<u>Dropped</u>	<u>Both Sem Honor &amp; Dean's List</u>
Agriculture	11%	1%	10%
Consumer & Family Sci	8%	2%	11%
Education	4%	1%	18%
Engineering	9%	2%	18%
Liberal Arts	11%	2%	13%
Management	7%	1%	14%
Pharmacy, Nur & Hlth Sci	8%	1%	16%
Science	13%	2%	16%
Technology	11%	3%	9%
Veterinary Medicine	6%	0%	9%
Undergrad Studies Prog	11%	3%	15%
University Division	16%	16%	4%
Nondegree	12%	2%	4%

### Fall 1998 Performance By

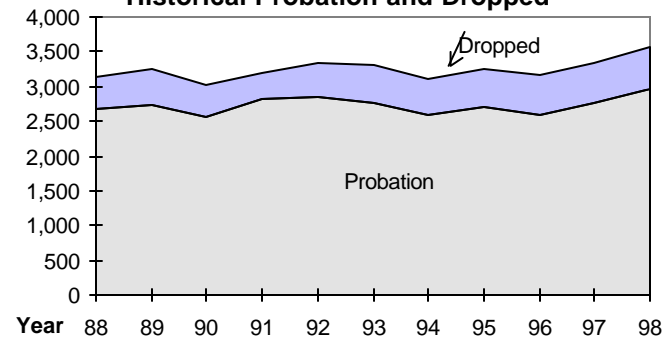
<u>Classification</u>	<u>Probation</u>	<u>Dropped</u>	<u>Sem Honors &amp;/or Dean's List</u>
Freshmar. <sup>2</sup> (1s & 2s)	783	110	1,336
Sophomore (3s & 4s)	1,087	289	949
Junior (5s & 6s)	664	124	802
Senior (7s, 8s & 9s)	359	72	882
Nondegree	61	10	28
<b>TOTAL UNDERGRAD</b>	<b>2,954</b>	<b>605</b>	<b>3,997</b>

<sup>1</sup> The SAT scores have been converted to the recentered  
<sup>2</sup> Freshman includes first-time, first-year students and continuing first-year  
<sup>3</sup> In 1991, Distinguished was separated into Semester Honors and Dean's

**Historical Distinguished, Semester Honors, and Dean's List<sup>3</sup>**

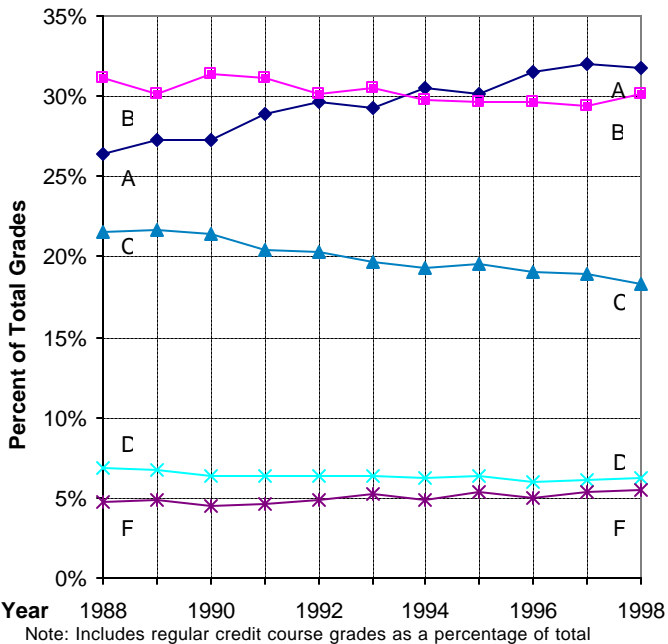


**Historical Probation and Dropped**

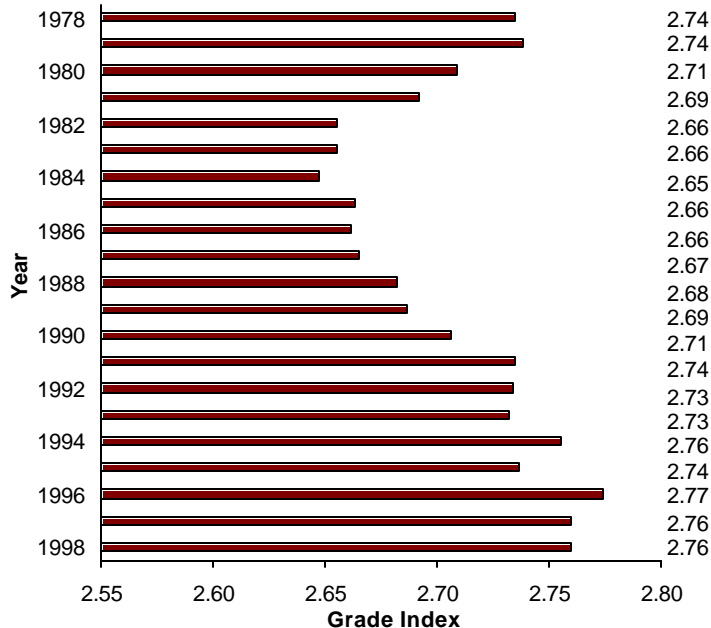


### Fall Academic Performance

**Undergraduate Grade Distribution By Fall Semester**



**Average Undergraduate Semester Grade Index By Fall Semester**



### Retention

**Fall 1992 Beginning Students<sup>1</sup>**

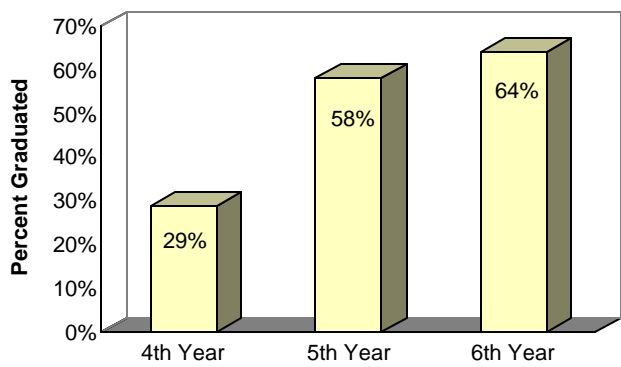
Year	STATUS			
	Enrollment Continued	Graduated <sup>2</sup>	Voluntarily Withdrew	Academic Dismissal
After Year 1	83%	0%	13%	4%
After Year 2	71%	<1%	20%	8%
After Year 3	67%	1%	23%	9%
After Year 4	38%	29%	23%	10%
After Year 5	9%	58%	23%	10%
After Year 6	3%	64%	23%	10%

N=5,928

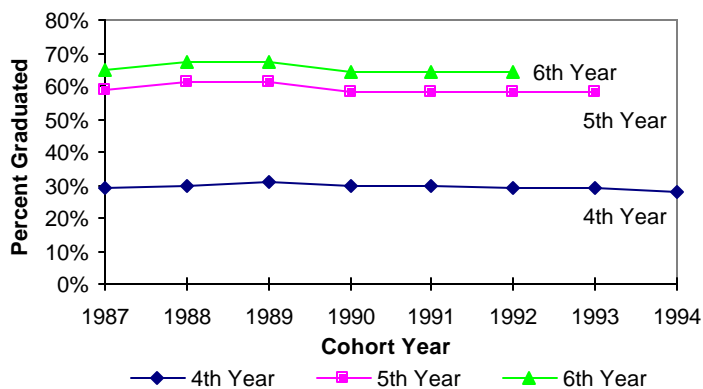
**Historical Graduation Rates**

Fall Beginners	Beginning Enrollment	First-Year Retention Rate	Graduated Within 4 Years	Graduated Within 5 Years	Graduated Within 6 Years
1987	6,399	83%	29%	59%	65%
1988	7,142	85%	30%	61%	67%
1989	6,470	85%	31%	61%	67%
1990	5,861	83%	30%	58%	64%
1991	6,029	83%	30%	58%	64%
1992	5,928	83%	29%	58%	64%
1993	6,046	82%	29%	58%	~
1994	5,912	83%	28%	~	~

**1992 Beginning Students' Degrees Completed**



**Historical Graduation Rates**



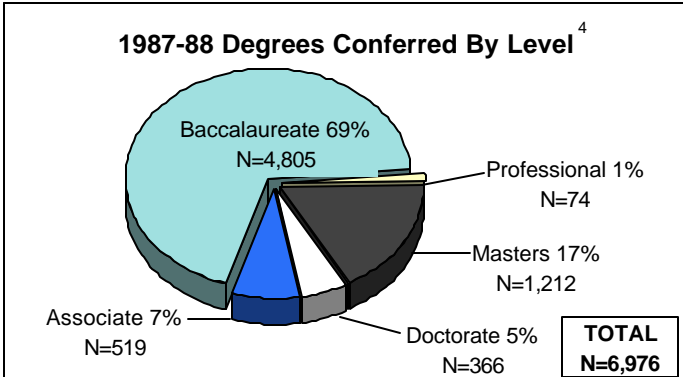
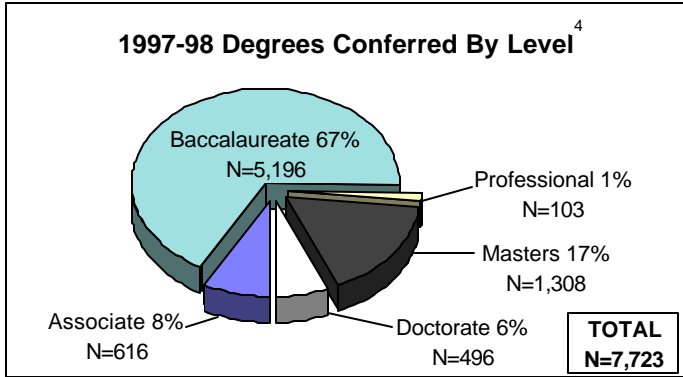
<sup>1</sup> Degree seeking Freshman 1s who enrolled in summer or fall 1992.

<sup>2</sup> Includes terminal associate and baccalaureate degrees.

## Degrees Conferred - Ten-Year Comparison <sup>1</sup>

### Degrees By School

<b>Associate &amp; Baccalaureate</b>	<b>1997-98</b>	<b>1987-88</b>	<b>% Change</b>
Agriculture	592	362	64%
Consumer & Family Sciences	397	457	-13%
Education <sup>3</sup>	225	192	17%
Engineering	1,092	1,175	-7%
Liberal Arts <sup>3</sup>	970	805	20%
Management	400	405	-1%
Pharmacy, Nursing & Health Sci	367	249	47%
Science	372	425	-12%
Technology	1,373	1,232	11%
Veterinary Medicine	24	22	9%
<b>Masters &amp; Doctorate</b>			
Agriculture	139	139	0%
Consumer & Family Sciences	56	37	51%
Education <sup>3</sup>	136	169	-20%
Engineering	573	525	9%
Liberal Arts <sup>3</sup>	202	191	6%
Management	345	240	44%
Pharmacy, Nursing & Health Sci	39	25	56%
Science	267	224	19%
Technology	32	10	220%
Veterinary Medicine	15	14	7%
<b>Professional &amp; Educational Specialist</b>			
Pharmacy, Nursing & Health Sci	42	14	200%
Veterinary Medicine	61	60	2%
Educational Specialist	4	0	400%



### Ethnic Degrees

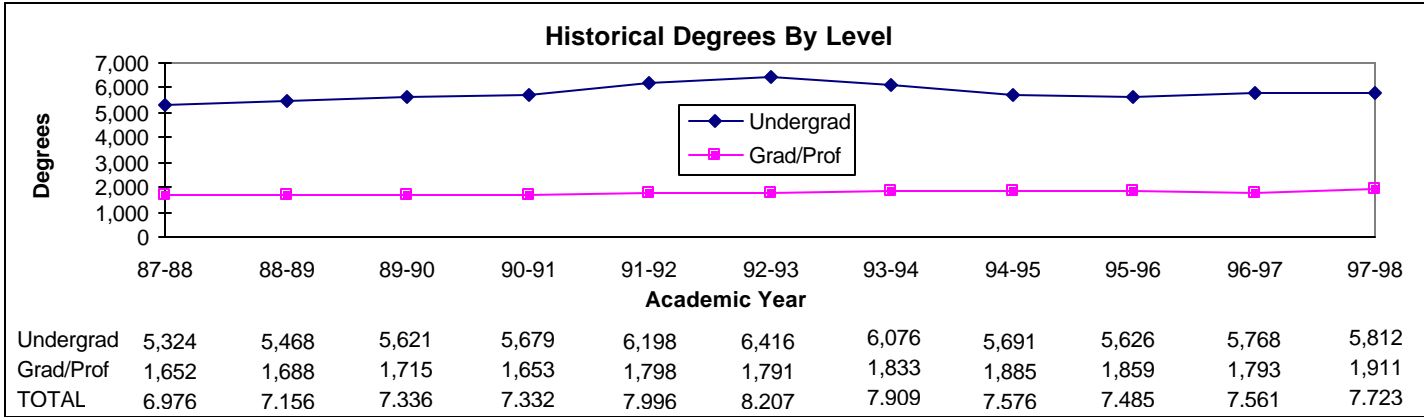
<b>Associate &amp; Baccalaureate</b>	<b>1997-98</b>	<b>1987-88</b>	<b>% Change</b>
African American	210	174	21%
American Indian	30	6	400%
Asian American	214	103	108%
Hispanic American	119	73	63%
<b>Masters &amp; Doctorate</b>			
African American	62	22	182%
American Indian	2	5	-60%
Asian American	85	38	124%
Hispanic American	37	20	85%
<b>Professional &amp; Educational Specialist</b>			
African American	1	0	100%
American Indian	0	2	-200%
Asian American	5	1	400%
Hispanic American	2	1	100%
<b>TOTAL ETHNIC</b>	<b>767</b>	<b>445</b>	<b>72%</b>

### Degrees By Level

	<b>1997-98</b>	<b>1987-88</b>	<b>% Change</b>
Associate	616	519	19%
Baccalaureate	5,196	4,805	8%
Professional	103	74	39%
Educational Specialist	4	0	400%
Masters	1,308	1,212	8%
Doctorate	496	366	36%
<b>TOTAL DEGREES</b>	<b>7,723</b>	<b>6,976</b>	<b>11%</b>

### International Degrees

	<b>1997-98</b>	<b>1987-88</b>	<b>% Change</b>
Associate & Baccalaureate	215	92	134%
Professional & Educational Specialist	1	0	100%
Masters & Doctorate	580	379	53%
<b>TOTAL INTERNATIONAL</b>	<b>796</b>	<b>471</b>	<b>69%</b>



<sup>1</sup> The degrees awarded as of June 1, 1987 & June 1, 1997.

<sup>2</sup> Four MSPPA Degrees awarded in 1987-88 not included.

<sup>3</sup> In 1987, the School of Liberal Arts and the School of Education were included together in the School of Humanities. Social Sciences, and

<sup>4</sup> Excludes Educational Specialist degrees (N=4) <1% for 1997-98, (N=0) 0% for 1987-88, but the degrees are included in the total count.