

Purdue University Emergency Preparedness

CAMPUS EMERGENCY PREPAREDNESS & PLANNING OFFICE

H1N1 Facts and Information

- **What is H1N1 (Swine flu)?**

- H1N1 is a novel influenza virus causing illness in people. This virus is spreading from person-to-person.

- **What are the signs and symptoms of the virus?**

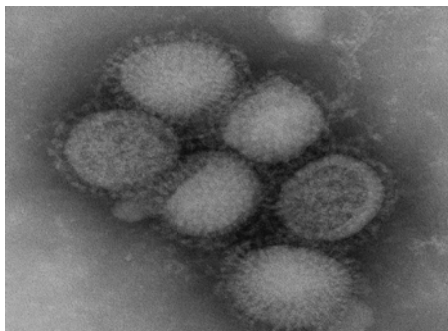
- Symptoms of the H1N1 flu virus in people are similar to the symptoms of seasonal flu and may include:

- Fever
- Cough
- Sore throat
- Runny or stuffy nose
- Body aches
- Headache
- Chills
- Fatigue
- Diarrhea
- Vomiting

- Like seasonal flu, severe illness and death has occurred as a result of this virus.

- **How does the flu spread?**

- Flu viruses spread from person to person through coughing or sneezing. People may become infected by touching something with flu viruses on it and then touching their eyes, mouth or nose.



The image above is the newly identified H1N1 influenza virus taken in the CDC Influenza Laboratory.

- **What should I do if I get sick?**

- Persons with influenza like illness should be advised to stay home for 7 days after the onset of illness or at least 24 hours after symptoms have ended.
- Purdue students or conferees may contact the student health center at 765-494-1700 or go to the center's urgent-care entrance off University Street.

- **What can I do?**

- Wash your hands thoroughly and frequently.
- If you have flu like symptoms, inform campus leaders such as:
 - Residence hall RAs
 - Event coordinators
 - Supervisors
 - Coaches
 - Instructors

**Information from Centers for Disease Control and Prevention (CDC)*

Emergency Notification:

- **Dial 911** from any public or campus telephone.

- **Emergency Telephone Systems(ETS):**

- Over 200 yellow boxes on Purdue's Campus. For assistance push the ETS button which will connect you to the Purdue Police Department.

- **Immediate Warning Notifications:**

- **Fire Alarms** - Immediately evacuate the building and proceed to your Emergency Assembly Area.
- **All Hazards Emergency Warning Sirens** - Immediately seek shelter ("Shelter in place") in a safe location within closest facility/building. Warnings may include:
 - Tornado
 - Earthquake
 - Release of hazardous materials
 - Civil disturbance

- **"Shelter in place"** - Seeking immediate shelter inside a building or University residence.

- When you hear the sirens immediately go inside a building to a safe location and use all communication means available to find out more details about the emergency.
- Remain in place until police, fire, or other emergency response personnel provide additional guidance or tell you it is safe to leave.

- **Emergency Information Systems:**

- Alarms/Sirens
- Purdue Home Page
- Purdue Email Alert
- Purdue Text Alert
- TV/Radio Reports

Sign up for Purdue Alerts at:
www.purdue.edu/securepurdue

The contents of this flyer were developed under a grant from the Department of Education. However, those contents do not necessarily represent the policy of the Department of Education, and you should not assume endorsement by the Federal Government

For More Information Visit: www.purdue.edu/emergency_preparedness/ www.purdue.edu/fluinfor/ www.purdue.edu/push/