

August 24, 2009

AN INTERIM PERSPECTIVE

Welcome to the start of a new semester, a beginning for some of you and a continuation for others, from our entering freshmen and new graduate students, to our newest faculty member, Jay Melosh, and our new Dean, Jeff Roberts. We also welcome Jon Harbor back into the department, who just served one year as Interim Dean of Science. These are truly exciting times for EAS, from the grand challenges of science that find EAS faculty and students intricately involved, to extraordinary achievement by our alumni, evidenced by the likes of Astronaut, Drew Feustel. An opportunistic time is ahead for EAS, as the department and college will be involved in recruiting three new faculty appointments to the campus: 1) a joint faculty position between Physics and EAS for the PRIME lab and AMS research, 2) Director of the Purdue Climate Change Research Center, and 3) a faculty appointment in planetary science, an initiative under the leadership of Distinguished Professor, Jay Melosh.

The EAS faculty have just held their annual retreat (which I prefer to call Advance), which has established forward-looking momentum to complete our Strategic Plan (2009-14). This is building upon the many benefits of our External Review, held earlier this year. Faculty and student scholarly achievements, research expenditures, gift funds, and alumni support and participation have set new high-water marks of accomplishment, but the department is not complacent. We are strategically planning to elevate our educational and research programs to a top-tier level of preeminence, a challenge that we gladly accept.

Best wishes to all for a most productive and successful semester.

Ernie

UPCOMING MEETINGS / EVENTS

Monday, August 24

- Primary Promotion Committee, CIVL 3201 (11:45 a.m.)

Wednesday, August 26

- EAS Leadership Committee, CIVL 2173 (9 a.m.)

Friday, August 28

- ATMS Tea, CIVL 2201 (2:30 p.m.)
-

INVITED PANEL SPEAKER

Shepardson, D.P. (2009). Invited panel speaker: Cognitive and Affective Conditions for Understanding Climate Change. NSF workshop on Climate Change Education: Defining Needs and Key Issues, July 29-31, NSF, Arlington VA.

LEAD EDITOR

Gabe Bowen was lead editor of a special issue of the Journal of Geochemical Research published last week and entitled, "Isoscapes: Isotope mapping and its applications". The table of contents and all articles in the issue are available at <http://www.science-direct.com/science/journal/03756742>.

ASSOCIATE EDITOR FOR NEW JOURNAL

Gabe Bowen has accepted the role of associate editor for a new journal, *Methods in Ecology and Evolution*, that will be published beginning in 2010 by the British Ecological Society. The journal will provide a unique outlet for methods-focused papers in a wide range of focus areas related to organismal biology, and will complement the existing portfolio of highly-ranked Ecology journals published by the BES. More information is available at <http://www.methodsinecologyandevolution.org/>, or feel free to contact Gabe with questions about the journal.

RECENT PRESENTATIONS

The Rock Physics group gave presentations at Asheville 2009, the 43rd US Rock Mechanics Symposium and 4th U.S.-Canada Rock Mechanics Symposium, held in Asheville, North Carolina on June 28th – July 1, 2009. Graduate students

Weiwei Li & Christopher Petrovitch gave talks on "Seismic Wave Propagation in Fractured Carbonate Rock" and "A computational study: The scaling relationship between fluid flow and displacement in single fractures," respectively.

Prof. Laura J. Pyrak-Nolte gave two lectures entitled, "Micro-models Lecture 1: Fabrication & Image Analysis" and "Micro-models Lecture 2: Research Results" at the Summer School on the "Role of Interfacial Area in Two-Phase Flow and Transport in Porous Media: Theory, Experiment, Modelling," held July 19-24, 2009 at the University of Utrecht, Environmental Hydrogeology Group, Utrecht, Netherlands.

Kevin Gurney gave a talk titled, "Quantifying & visualizing CO₂ emissions at human scales: From Project Vulcan to Hestia and Beyond" to the Solutions Summit, hosted by Vice President Al Gore on August 4th, 2009.

Terry West recently gave the following two invited presentations in the Lafayette area:

July 28, Lafayette Rotary Club, "The Glacial and Bedrock Geology of Indiana," presented to about 100 Rotarians during their weekly luncheon meeting.

August 11, University Place Retirement Center, "Road Construction Problems for Lindberg Road at Celery Bog, A Combination of Mistakes." This is the fourth time Dr. West has presented this talk to interested parties in the Lafayette community. Dr. Felix Haas, former Dean of Science and former Provost of Purdue, requested the talk and introduced the speaker for their evening assembly. More than 100 residents of the Center were in attendance.



Drs. Terry West and Felix Haas

Charlotte Kendra G. Castillo gave a talk on "Thinking Outside the Carbon Box: Science and Policy Implications of Climate Change and Deforestation" at the Manila Observatory on August 7, 2009. The Manila Observatory is a scientific research institution for climate, the environment and sustainable development.

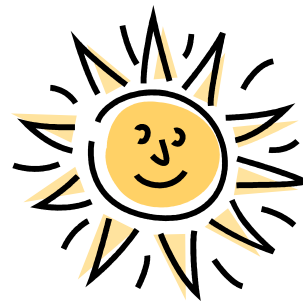
Gerald H. Krockover gave a presentation entitled, "Implementing Standards Based Science Instruction Using an Inquiry Approach to Learning," at Lawton Oklahoma Public Schools on August 14, 2009.

Jon Harbor and Marc Caffee took part in the 5th *International Symposium on the Tibetan Plateau* in Beijing, August 11-14th. Papers and posters with Purdue authors and co-authors included:

- Quaternary glaciation of the Himalayan-Tibetan orogen (presentation by Marc Caffee)
- An evaluation of multiple working hypotheses to explain cosmogenic exposure age data from glacial deposits in the Bayan Har Shan, NE Tibetan Plateau (Keynote presentation by Jon Harbor)
- Cosmogenic nuclide constraints on glacial landform evolution in the source area of the Urumqi River, Tian Shan, China (presentation by EAS alumnus Yingkui Li)
- A paleoglaciological reconstruction for Bayan Har Shan, NE Tibetan Plateau
- Cosmogenic nuclide ¹⁰Be dating of the "Wangkun Till" in the Kulun Pass, Northern Qingzang Plateau
- Glacial geomorphology of the Haizi Shan area, SE Tibetan Plateau
- Glacial boulder exposure ages from the Tibetan Plateau – old deposits and post-glacial shielding.
- Timing and extent of Quaternary glaciation in the Nubra and Shyok valleys, northernmost Ladakh, India
- TCN chronological constraints of Northern ShishaPangma glaciations in Monsoonal Himalayas

FORECAST GAME BEGINS AUGUST 31

The nth year of the Purdue University Forecast Game begins on Monday, August 31. The Forecast Game is open to all Purdue students, faculty, and staff. Face off against your friends as you battle to predict the fury of Mother Nature. See <http://wxp.eas.purdue.edu/forecast> for more information or e-mail bcotton@purdue.edu to sign up.



SUMMER GRADUATES



Moetasim Ashfaq (Ph.D.)
Advisor: Noah Diffenbaugh
Moetasim has accepted a Post-Doc position at Purdue working with Noah Diffenbaugh.



Warren Eckels (M.S.)
Advisor: Kevin Gurney
Warren will continue with his Ph.D. program.



Erin Jones (M.S.)
Advisor: Ernie Agee
Erin will begin a Ph.D. program this Fall working with Mike Baldwin.



Christie Lindemann (M.S.)
Advisor: Ken Ridgway
Christie is working for Chevron in Houston, part of the Deepwater Exploration group, Geological and Geophysical operations. She's working in Gulf of Mexico offshore oil exploration.



Kelly (Ross) Mays (M.S.)
Advisor: Paul Shepson
Kelly married Joey Mays this past summer. She is looking for a suitable position in eastern Pennsylvania.



Douglas K. Martins (Ph.D.)
Advisor: Paul Shepson
Doug is working as a Post-Doc in the labs of Prof. Anne M. Thompson, in the Dept of Meteorology at Pennsylvania State University. He is working on the NATIVE project (<http://ozone.met.psu.edu/Native/index.html>).

FROM OUR BUSINESS OFFICE

Recent Proposals (September 2008 – July 2009)

- Baldwin, Michael E.: National Science Foundation Graduate Research Fellowship-Jacob R Carley. NSF – \$121,500
- Baldwin, Michael E.: National Science Foundation Graduate Research Fellowship-Benjamin Schwedler. NSF – \$121,500
- Bowen, Brenda B.: A Sharp-Interface Model of CO₂ Sequestration within the Illinois Basin. New Mexico Inst Mining & Technology – \$62,462
- Bowen, Brenda B.: Exxon Mobil's Global Geoscience Recruiting award for Raul Ochoa. Exxon-Mobil Exploration Company - \$5,000
- Bowen, Brenda B.: Remote Quantification of Sandstone Resource Chemistry and Heterogeneity in the Jurassic Navajo Sandstone. NASA – \$30,000
- Bowen, Brenda B.: CAREER: Rethinking Red Beds and the Importance of Iron Cycling in Interpreting Continental Sedimentary Paleoenvironmental Records. NSF – \$840,779
- Bowen, Gabriel J.: Dietary Protein Intake and Skeletal Muscle Adaptations in Older Humans. National Institutes of Health – \$3,215,056
- Bowen, Gabriel J.: Geographic and Seasonal Variations in Stable Isotope Ratios of Water. University of Utah – \$113,777
- Bowen Gabriel J.: Prediction and Validation of Water Supply Sensitivity Through GIS-based Integration of Environmental, Demographic, and Stable Isotope Data. National Geospatial – Intelligence Agency – \$359,987
- Braile, Lawrence W.: Processing, Modeling and Interpretation of SAGE Geophysical Data across the Rio Grande Rift, Northern New Mexico. Los Alamos National Laboratory – \$86,940
- Calais, Eric: American Geophysical Union-Research Letters. American Geophysical Union – \$11,800
- Calais, Eric: CBTH project. University of Texas at Austin – \$10,000
- Calais, Eric: Exxon Mobil's Global Geoscience Recruiting Award for Laura Bennati-Rassion. Exxon-Mobil Exploration Company – \$7,500
- Calais, Eric: GPS East Africa-Uganda 2008. Goethe - University Frankfurt – \$15,046
- Calais, Eric: National Science Foundation Graduate Research Fellowship-Dorothy Sarah Stamps. NSF – \$121,500
- Calais, Eric; Freed, Andrew M: Intraplate Strain and Stress in the North American Plate Interior: Collaborative Research with Purdue University

- and University of Wisconsin. U.S. Geological Survey – \$140,323
- Calais, Eric, Freed, Andrew M: Magma-assisted Rifting in East Africa? NSF – \$250,121
- Cushman, John H: CMG Collaborative Research: Up-scaling Pore-Scale to Field-Scale Contaminant Reactive Transport using Automatic Optimal Model Identification. NSF – \$291,175
- Cushman, John H.: Multiscale Model of Coupled Biogeochemical Processes and Contaminant Transport. University of California – San Diego – \$364,189
- Diffenbaugh, Noah S.: Collaborative Research: Forest Management, Climate Change and Fire: Coupled Feedbacks Between Humans and Nature in Western Forests. NSF – \$390,346
- Diffenbaugh, Noah S.: The Impact of Climate and Climate Change on West Nile Virus Transmission. University of California - Santa Cruz – \$233,780
- Diffenbaugh, Noah S.; Gurney, Kevin R: Impacts of High Resolution Extreme Events on US Energy Demand and CO₂ Emissions in the 21st Century. U.S. DOE – \$332,593
- Filley, Timothy R.: Acquisition of a Gas Chromatograph-Quadrupole Mass Spectrometer and Upgrade to an Existing Stable Isotope Mass Spectrometer for Continued Biogeochemical Research. NSF – \$188,209
- Filley, Timothy R.: Collaborative Research: Biological and Physical Controls on Black Carbon Turnover in Temperate Forest Soils. NSF – \$370,976
- Filley, Timothy R.: REU Supplement: Impacts of Vegetation Change on Stabilization and Microbial Accessibility of Soil Organic Matter: A Microbiological, Isotopic, and Mole. NSF – \$4,924
- Filley, Timothy R.: Effects of Deciduous Tree Species on the Biogeochemistry of Soil Organic Carbon. Ohio State University – \$54,815
- Flesch, Lucy M.; Calais, Eric; Cushman, John H.: CMG Research: The Application of Polar Field Theories to Large-Scale Continental Deformation. NSF – \$510,996
- Flesch, Lucy M.; Gilbert, Hersh J.: An Integrated Geodynamic and Seismic Approach to Deconvolving the Forces Acting on Continental Lithosphere. NSF – \$298,596
- Freed, Andrew M.: Basin Tectonics and Volcanism on Mercury. NASA – \$177,300
- Freed, Andrew M.: Contemporary Stressing of the Alaskan Crust from Coseismic, Postseismic, and Interseismic Processes. U.S. Geological Survey – \$59,525
- Freed, Andrew M.: Identification of Postseismic Transients in PBO GPS Time-series. NSF – \$151,190
- Gavindaraju, Raos S.; Niyogi, Devdutta S., Prabhakar, Sunil K.; Zhang, Xiangyu: CDI-Type II: Virtual Organization for Uncertainty and Error Management in Hydrologic Simulations. NSF – \$1,549,111
- Gibson, Kevin D.; Ridgway, Kenneth D.; Lewis, Dwight E.; Ravenold, Kerry N.; Smith, M.J.T.; Zollner, Patrick A.; Zurn-Birkhimer, Suzanne M.: Tecumseh Project: Purdue Program for Native Americans - A Proposal for a Partnership between Purdue University and the Sloan Foundation. Sloan, Alfred P. Foundation – \$84,831
- Gilbert, Hersh J.; Flesch, Lucy M.: Collaborative Research: Walker Lane Integrated Geological and Geophysical Lithospheric Experiment (WIGGLE). NSF – \$552,238
- Gluhovsky, Alexander; Agee, Ernest M.: Trends, Coherent Structures and Extremes in Weather and Climate. NSF – \$568,642
- Granger, Darryl E.: Collaborative Research: Climatic and Biotic Controls on Late Quaternary Erosion in the Oregon Coast Range. NSF – \$71,216
- Gurney, Kevin R.: Dynamic, Socio-economic Relationship-building for the Vulcan Fossil CO₂ Emissions Dataset. Google Inc. – \$71,813
- Gurney, Kevin R.: Impacts of High Resolution Extreme Events on US Energy Demand and CO₂ Emissions in the 21st Century. U.S. DOE – \$113,406
- Gurney, Kevin R.: Understanding and Quantifying the Socioeconomic Drivers of U.S. ... Fossil Fuel CO₂ Emissions through Spatial Analysis. NSF – \$131,721
- Gurney, Kevin R.: Visualizing Fossil Fuel CO₂ Emissions and Intensity Trends by Location and Economic Sector. Google Inc. – \$30,805
- Gurney, Kevin R.: Benes, Bedrich: A Global High-Resolution Fossil Fuel CO₂ Inventory and Assimilation System to Advance Carbon Science, Climate Science, and Decision-Support. NSF – \$1,268,308
- Haase, Jennifer S.: Faculty for the Future Program Fellowship. Schlumberger Foundation – \$26,090
- Haase, Jennifer S.; Calais, Eric: Incorporating GPS Data into Probabilistic Seismic Hazard Estimates for the Central and Eastern US. U.S. Geological Survey – \$156,700
- Haase, Jennifer S.; Garrison, James: GPS-Derived Moisture Profiles and Surface Winds for the GRIP Hurricane Field Experiment. NASA – \$626,091

- Haq, Saad S.: Resolving the Style of Deformation Responsible for Mountain Belt Curvature. NSF – \$239,918
- Harbor, Jonathan M.: Collaborative Research in Geomorphology. University of Missouri – \$10,000
- Harbor, Jonathan M.; Bryan, Lynn A.: The Indiana Interdisciplinary GK-12: Bringing Authentic Problem Solving In Stem to Rural Middle Schools. NSF – \$74,202
- Harshvardhan: Improving Vertical Profiles of Biomass Burning Emissions Using Satellite Observations and Numerical Modeling. NASA – \$30,000
- Harshvardhan: Applications of VOCALS Data to the Implementation of Aerosol-cloud Interactions in Climate Models. NOAA – \$351,494
- Harshvardhan: Study of the Evolution and Transport of Biomass Burning Smoke Plumes in Varying Environmental Conditions with Numerical Modeling, Satellite and Field Observations. NASA – \$329,385
- Harshvardhan: Evolution and Impact of Absorbing Aerosol Layers over Low Level Marine Clouds. NASA – \$312,672
- Hook, Tomas O.; Bowen, Gabriel J.: Constructing the Nearshore Lake Michigan Food Web Using Multiple Trophic Indicators. University of Illinois – \$96,821
- Huber, Matthew: Collaborative Research: The Role of Deep-Ocean Circulation in Greenhouse Climates: Integrating Numerical Simulations with Proxy Data of Water Mass Com. NSF – \$55,663
- Huber, Matthew: Collaborative Research: Understanding the Role of a High-Latitude Convective Cloud Feedback in Equable and Future Climate Dynamics. NSF – \$188,021
- Huber, Matthew; Bowen, Gabriel J.: Collaborative Research: Integrating Proxies and Earth System Models to Elucidate Water Cycle Dynamics: Did Global Warming Cause an Enhanced Hydrological... NSF – \$472,346
- Krockover, Gerald H.; Bayley, William G.: Standards Based Integrated Science Instruction for the Middle Grades. IN Commission for Higher Education – \$362,977
- Lasher-Trapp, Sonia G.: Numerical Modeling Investigations of Mixed-Phase Clouds at Multiple Scales. NSF – \$467,379
- Michalski, Greg M.: A New Regional Paleo-Precipitation Proxy: Oxygen Isotopes in Desert Nitrate. NSF – \$335,000
- Michalski, Greg M.: Collaborative Research: Impacts of Urbanization on Nitrogen Biogeochemistry in Xeric Ecosystems. NSF – \$289,031
- Michalski, Greg M.: Development of New Instrumentation: Laser Decomposition Isotope Interface (LADII)-Total Isotope Analysis of Nanomolar Amounts of Sulfate and Nitrate. NSF – \$83,171
- Michalski, Greg M.: Using Oxygen Isotope to Constrain Ozone Sources and Sinks. NSF – \$299,748
- Niyogi, Devdutta S.: Career: Assessing the Role of Land Surface Processes on the Climatic Changes in the Heavy Rain and Convection over the Indian Monsoon Region. NSF – \$641,047
- Niyogi, Devdutta S.: Communicating Ocean Sciences Informal Education Network: Scientists and Educators Working Together to Promote Ocean Literacy. University of California - Berkeley – \$268,258
- Niyogi, Devdutta S.: Improving Regional Simulations through Dynamic Grid Refinement Driven by Phenomenon Mining. University of Alabama Huntsville – \$60,195
- Niyogi, Devdutta S.: Quantifying Smoke Emissions and Transport from Agriculture and Prescribed Burning for the Study of Community-Scale Air Quality Impacts. San Jose State University – \$115,000
- Niyogi, Devdutta S.: Synergetic Use of Ground Based Measurements, Satellite Remote Sensing and Air Quality Modeling to Improve Agricultural Emission Inventories. University of Alabama Huntsville – \$92,000
- Niyogi, Devdutta S.: Utilization of Satellite Remote Sensing for Characterizing Emissions in Air Quality Models. University of Alabama Huntsville – \$119,087
- Niyogi, Devdutta S.; Michalski, Greg M.: Improved Assessment of HNO₃ and Particulate Transformation in Midwestern United States using Isotopic and Agricultural Air Quality Model Analysis. Cooperative State Research Service – \$400,000
- Nowack, Robert L.: CMG Collaborative Research: Robust PDE-Based Algorithms for Geophysical Multivalued-Travel time Tomography. NSF – \$196,700
- Ridgway, Kenneth D.: Collaborative Project: Track 2, METALS Minority Education through Traveling and Learning in the Sciences. NSF – \$375,100
- Ridgway, Kenneth D.: Collaborative Research: Sedimentary Basin Response to Paleocene-Eocene Spreading Ridge Subduction in South-Central Alaska. NSF – \$130,044
- Ridgway, Kenneth D.: Exxon Mobil's Global Geoscience Recruiting award for Tonya Richardson. Exxon-Mobil Exploration Company – \$5,000

Riggs, Eric M.: Sharing the Land: Fostering Further Success in Building Tribal Earth Science Expertise: TRACK 2. NSF – \$785,985

Riggs, Eric M.; Haghighi, Kamyar; Sadowski, Mary A.; Sahley, Christie L.; Staver, John R.: Purdue Robert Noyce Scholars: Excellence in Preparation of Rural High School STEM Teachers. NSF – \$149,047

Rochon, Gilbert; Niyogi, Devdutta S.: Early Warning and Mitigation of Flood & Drought Events in the Niger Delta. National Geospatial – Intelligence Agency – \$747,646

Shepson, Paul; Gurney, Kevin R.: Development, Improvement & Assessment of the Accuracy of Aircraft-Based Mass Balance Measurements of Integrated Urban Emission Fluxes of Greenhouse Gas. National Institute of Standards & Tech – \$1,500,000

Sun, Wen-Yih: Collaborative Research Peta Apps: A First Principle, Regional Climate-Watershed System Model for Managing Climate Impacts, Water Resources and Water Q. NSF – \$520,000

Trapp, Robert J.: Dynamic Map Generation and Display of Hazardous Weather from the Super High Resolution NEXRAD Data. Google.org – \$98,530

Trapp, Robert J.; Baldwin, Michael E.; Diffenbaugh, Noah S.; Gluhovsky, Alexander: The Response of Convective Precipitating Storms to Anthropogenically Enhanced Global Radiative Forcing. NSF – \$616,112

Trapp, Robert J.: Collaborative Research: Multi-scale and Multi-platform Study of Tornadoes, Supercell Thunderstorms, and their Parent Environments in VORTEX2. NSF – \$57,768

Tung, Wen-wen: CAREER: Quantifying the Predictability of Multiscale Convection-Coupled Tropical Variability-toward Improved Understanding and Prediction from Weather. NSF – \$430,847

Zhuang, Qianlai: Changes of Land Cover and Land Use and Greenhouse Gas Emissions in Northern Eurasia: Impacts on Human Adaptation and Quality of Life at Regional and Global Scales. NASA – \$824,701

Zhuang, Qianlai: Collaborative Research: Impacts of Climate Seasonality on Carbon Accumulation and Methane Emissions of Alaskan Ecosystems during the Holocene Thermal. NSF – \$202,918

Zhuang, Qianlai: Improving a Process-Based Biogeochemistry Model Using an Atmospheric Transport Chemistry Model and In-Situ and Remotely-Sensed Terrestrial and Atmospheric Data. NASA – \$30,000

Zhuang, Qianlai: Investigation of the Magnitudes and Probabilities of Abrupt Climate Transitions

(IMPACTS). Berkeley, Lawrence Laboratory – \$75,000

Zhuang, Qianlai: Modeling and Data Analysis to Improve Understanding of Atmospheric Chemistry, Climate, and Biospheric Interactions. University of Illinois at Champaign-Urbana – \$239,778

Zhuang, Qianlai: Quantifying Aerosol Effects on Net Carbon Exchange between the Atmosphere and Terrestrial Biosphere using Satellite Data and Models of Ecosystem and A. NASA – \$30,000

Zhuang, Qianlai: Quantifying Sizes of Permafrost and Soil Carbon and Their Responses to Climatic Changes in Northern High Latitudes. NASA – \$680,970

Zhuang, Qianlai; Crawford, Melba; Xiu, Dongbin; Zhang, Hao; Zhang, Jian: CDI-Type II: A Paradigm Shift in Ecosystem and Environmental Modeling: An Integrated Stochastic, Deterministic, and Machine Learning Approach. NSF – \$1,880,142

(Awards will appear in next week's newsletter.)

EAS TECHNOLOGY SUPPORT NEWS

Fall Technology Newsletter available

The fall edition of the EAS Technology Newsletter is available at

<http://www.purdue.edu/eas/resources/it/newsletter/fall-2009.html>. Included in this newsletter are: a link to updates in ITaP labs, the hypocenter backup policy, information about guest account creation, and many other useful notes.

Course Email Lists

Instructors on Purdue's West Lafayette campus can request course email lists for each course taught during the semester. Please note: Before you request a course email list, make sure you are FERPA certified and assigned in Banner as Instructor or Course Roster Viewer. Additional information may be found at:

<http://www.itap.purdue.edu/tit/emallists/>

Signals

Signals is a new web-based application developed at Purdue for use in Blackboard. In order to increase student success in the classroom, Signals detects early warning signs and provides intervention to students who may not be performing to the best of their abilities before they reach a critical point. Additional information can be found at:

<http://www.itap.purdue.edu/tit/idc/tips/current.cfm>
<http://www.itap.purdue.edu/tit/signals/index.cfm>

ITaP Training Calendar

ITaP training in August focuses on technology tools for instruction. Training sessions available include:

- Blackboard: Getting Started
- Blackboard: Mastering the Grade Book
- Blackboard: Building Course Content Using Templates
- Signals: Stoplights for student success
- eInstruction/CPS: Getting Started with Clickers
- Technology Tools for Teaching & Learning: What's available at Purdue

Additional information and links to register for courses may be found on the ITaP Training Calendar at:

<http://www.itap.purdue.edu/training/calendar/>

CONGRATULATIONS!

Hayden Sea **Gurney-Rowe** was born at 4:21 a.m. on Friday, August 7.



STUDENT OPPORTUNITY Updating the Celery Bog web site

Five years ago a group of EAS students created a web site for the Celery Bog that is still used regularly by the West Lafayette Parks & Recreation department and by numerous visitors (<http://www.purdue.edu/eas/geomorph/celerybog/>).

The site focuses on the geology and hydrology of the Celery Bog (a wetland nature center) and is aimed at providing general information for the public. The West Lafayette Parks & Recreation department would like the web site to be updated. If you are interested in helping out with this, please contact Jon Harbor at jharbor@purdue.edu.

A NOTE FROM OUR ACADEMIC COUNSELOR Schedule Revision Dates

Adding

Sunday, **August 30** is the last day to add a class with no signatures through myPurdue.

Sept. 8 through Sept. 21 requires instructor approval and signature and advisor signature. (21 is the last day to add a class)

Dropping

CHECK with your Advisor before dropping a class... and know your semester classification so you know what dates apply to you.

Monday, **September 7** is the last day to drop a class through myPurdue with no record of the course.

Monday, **September 21** is the last day to drop a class with a grade of "W" for those with a semester classification of 3 or above. You need advisor signature, and paperwork must be processed at Room 45 Hovde – you cannot process this yourself through myPurdue.

Monday, **Oct. 28** is the last day for anyone to drop a class for fall. Paper work needed with instructor and advisor signature, and instructor will determine "grade" – if semester classification is 03 or above. If your semester classification is 02 or below, you still need paperwork but only advisor's signature and the correct paperwork, which you take to Hovde Room 45 for final processing.

Math: The last day a student in MA 15200, 15300, 15400, or 15900 can change to a different level math course is Thursday, **September 24**.

Research

Discovery Park Undergraduate Research Internship (DURI) Opportunities: FALL 2009

- Engage in cutting edge interdisciplinary projects at Discovery Park
- Gain valuable skills and knowledge for a possible career in research
- A \$500 scholarship for a part-time internship in the Fall
- Become part of a community of researchers

How do you qualify?

- Sophomore status by FALL 2009 with a minimum 3.0 GPA
- Individual projects may list additional requirements
- Eligible to submit applications for up to 5 projects

How do you apply?

Search project descriptions and submit applications online: <http://www.purdue.edu/dp/duri>.

Informational Callouts

Tuesday, August 25, 4:30-5:30 pm, MGRN 121
Wednesday, August 26, 4:30-5:00 pm, MGRN 121
Monday, August 31, 4:30-5:30 pm, MGRN 129
Tuesday, September 1, 4:30-5:30 pm, MGRN 129
(MGRN is the Burton D. Morgan Building located at
the southwest corner of State and Jischke)

Application Deadline

Friday, November 7, 5 p.m.

Internships

Interns for Indiana

Fall 2009 Information Sessions: 4:30-5:30 p.m.

Tuesday	August 25	MRGN 121
Wednesday	August 26	MRGN 121
Monday	August 31	MRGN 129
Tuesday	September 1	MRGN 129

WHO: Undergraduate students with junior standing or higher and a 2.8 GPA or higher. All majors welcome to apply.

WHAT: Work with high-tech start-up companies, part-time. \$500 scholarship and one academic credit for the mandatory companion seminar series, GS 49000 Section 2, (Thursdays 4:30-5:20 pm). Work scheduling is flexible and allows you to keep a full course load.

WHERE: Academic-year companies are located in the Purdue Research Park, West Lafayette, and Lafayette.

WHEN: Application Deadline: **Friday September 4, 2009 by 5 pm**

Welcome to the fall semester!

Nancy

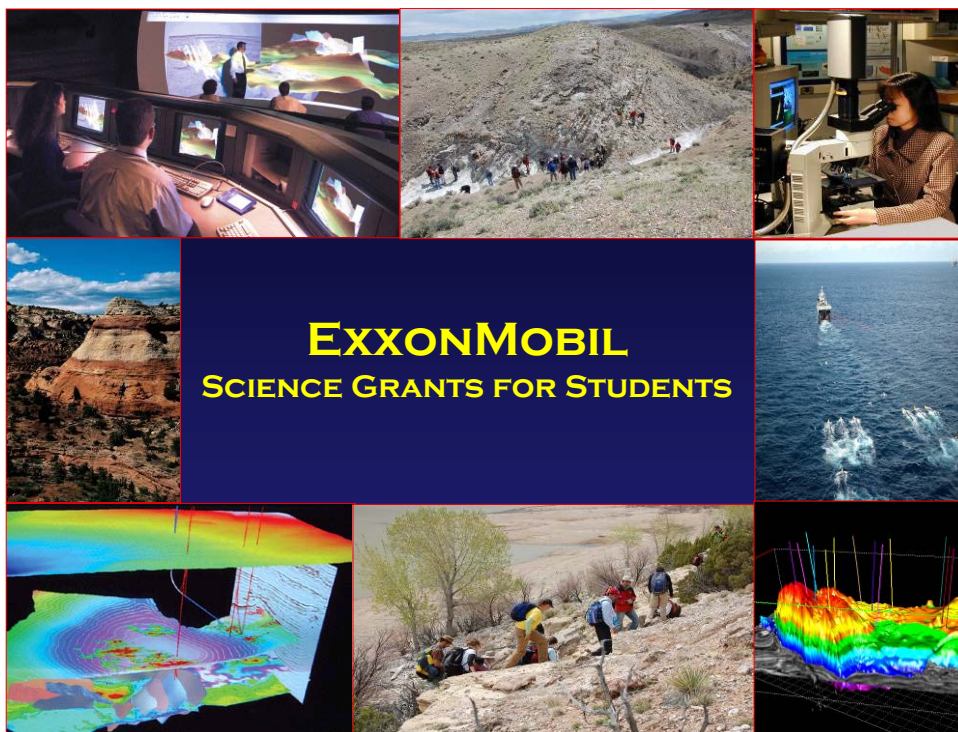
ABOUT THIS NEWSLETTER:

This weekly newsletter is the place to look to keep up with departmental happenings, announcements (seminars, student group events, scholarship and award deadlines, departmental committees), job and grant opportunities, and anything else you need to know about the department. It should cut down on the glut of email and other forms of separate announcements – **if it is in the newsletter, we assume you know about it** and no other reminders are needed. Past issues will be available on our departmental web site (www.purdue.edu/eas/). Material for inclusion in the newsletter should be submitted to Gina Richey (grichey@purdue.edu) by **Friday noon** of each week for inclusion in the Monday newsletter.

For answers to common technology questions and the latest updates from the EAS Technology Support staff, please visit <http://www.purdue.edu/eas/resources/it>.

Also, as an additional resource for information about departmental events, seminars, deadlines, etc., see our departmental calendar at <http://calendar.science.purdue.edu/eas/seminars>.





2010 ExxonMobil Geoscience Grants

ExxonMobil is pleased to be able to make available ten research grants of \$7500 each to provide partial support for master's and doctoral thesis research in all fields of geoscience (geology, geophysics, geo-engineering, geomicrobiology, environmental geochemistry, etc). Awards will be based solely on the merit of scientific proposals, to be reviewed by ExxonMobil's chief geoscientists. It is not necessary for the research to have direct relevance to the energy industry. Grants will be awarded to recipient's university department, for distribution to the recipient by that department. Funds must be used within the calendar year of 2010. Grant recipients will be invited to a science conference (in Houston) at the beginning and end of calendar year 2010 to meet other recipients, discuss project results with senior ExxonMobil technical staff, and learn more about geoscience research and applications at ExxonMobil. Application form is attached. Proposals should be submitted to Dr. Lori L. Summa (lori.l.summa@exxonmobil.com), and must be received by November 1, 2009 to be considered for a 2010 award. (*Electronic submissions only*)