

# **The State Utility Forecasting Group Independent Load Forecasts**

*Presented to:*

MISO Planning Advisory Committee

*Presented by:*

Douglas Gotham

February 19, 2014

# Indiana Code 8-1 to 8-5 (Amended in 1985)

*“The commission shall establish a permanent forecasting group to be located at a state-supported college or university within Indiana ...*

*This group shall develop and keep current a methodology for forecasting the probable future growth of electricity within Indiana and within this region of the nation.”*

# State Utility Forecasting Group

- Independent research and analysis group at Purdue University
- Much of SUFG's work is for the Indiana Utility Regulatory Commission, but SUFG has worked with/for a number of other entities
  - Other state agencies (IN Office of Energy Development, IN Department of Environmental Management)
  - Federal agencies (USDA, DOE, DOD)
  - Other states
  - Utilities
  - National labs
  - EISPC

# State Utility Forecasting Group

- Cooperative
  - We seek feedback from sponsors and stakeholders to improve the quality of our work
  - We operate under a “no surprises” policy
- Independent
  - We are ultimately responsible for the final product
  - Independence is crucial to our credibility and to the credibility of Purdue University

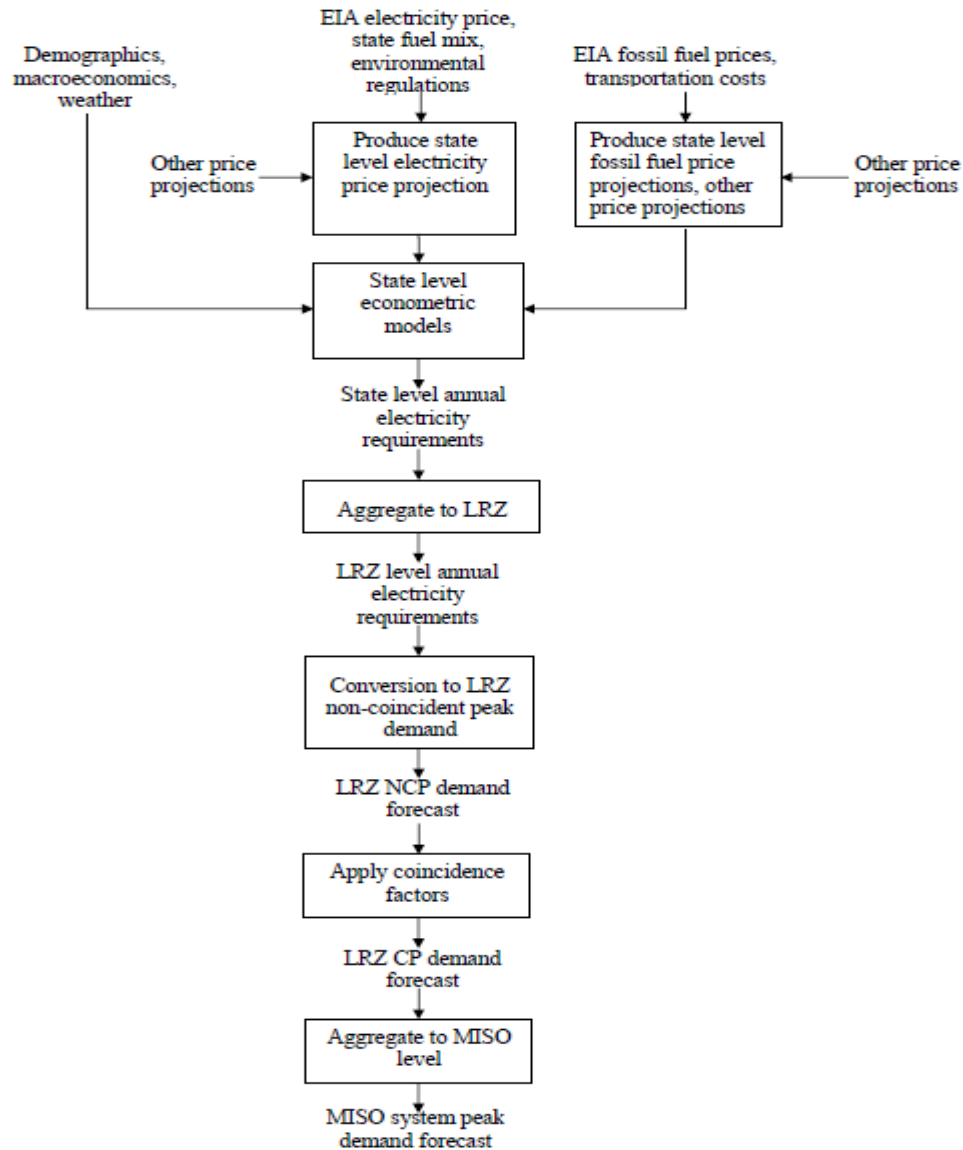
## SUFG Structure

- Four full-time professional staff with interdisciplinary backgrounds (electrical engineering, operations research, economics, and finance)
  - will be hiring 2 more
- Part-time administrative assistant
- Faculty as needed
- 3-6 graduate research assistants

# SUFG Forecasting

- For Indiana, SUFG has developed a sophisticated modeling system (including utility simulation and a combination of end-use and econometric models) to forecast demand at the utility level
  - We will not be doing this here
- The independent load forecast will use an econometric approach at the state level and convert those to LRZ level and MISO forecasts

## WORK FLOW CHART



# Further Information

- Doug Gotham
  - 765-494-0851
  - [gotham@purdue.edu](mailto:gotham@purdue.edu)
- <http://www.purdue.edu/dp/energy/SUFG/>