

2015 Indiana Renewable Resources Study

Presented by:

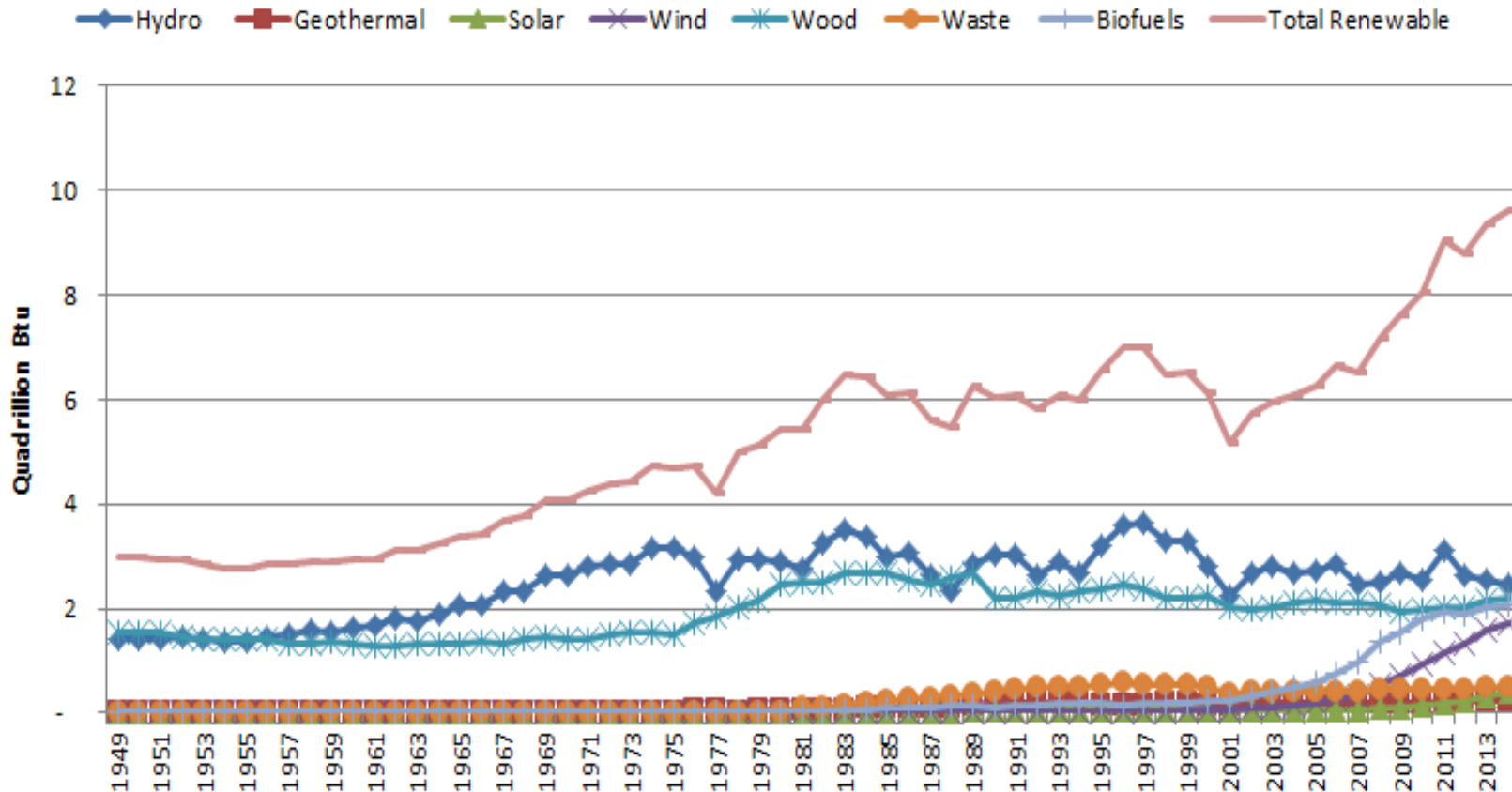
Douglas J. Gotham, Director
State Utility Forecasting Group
Purdue University

Presented to:

Interim Study Committee on Energy, Utilities, and
Telecommunications
Indiana General Assembly

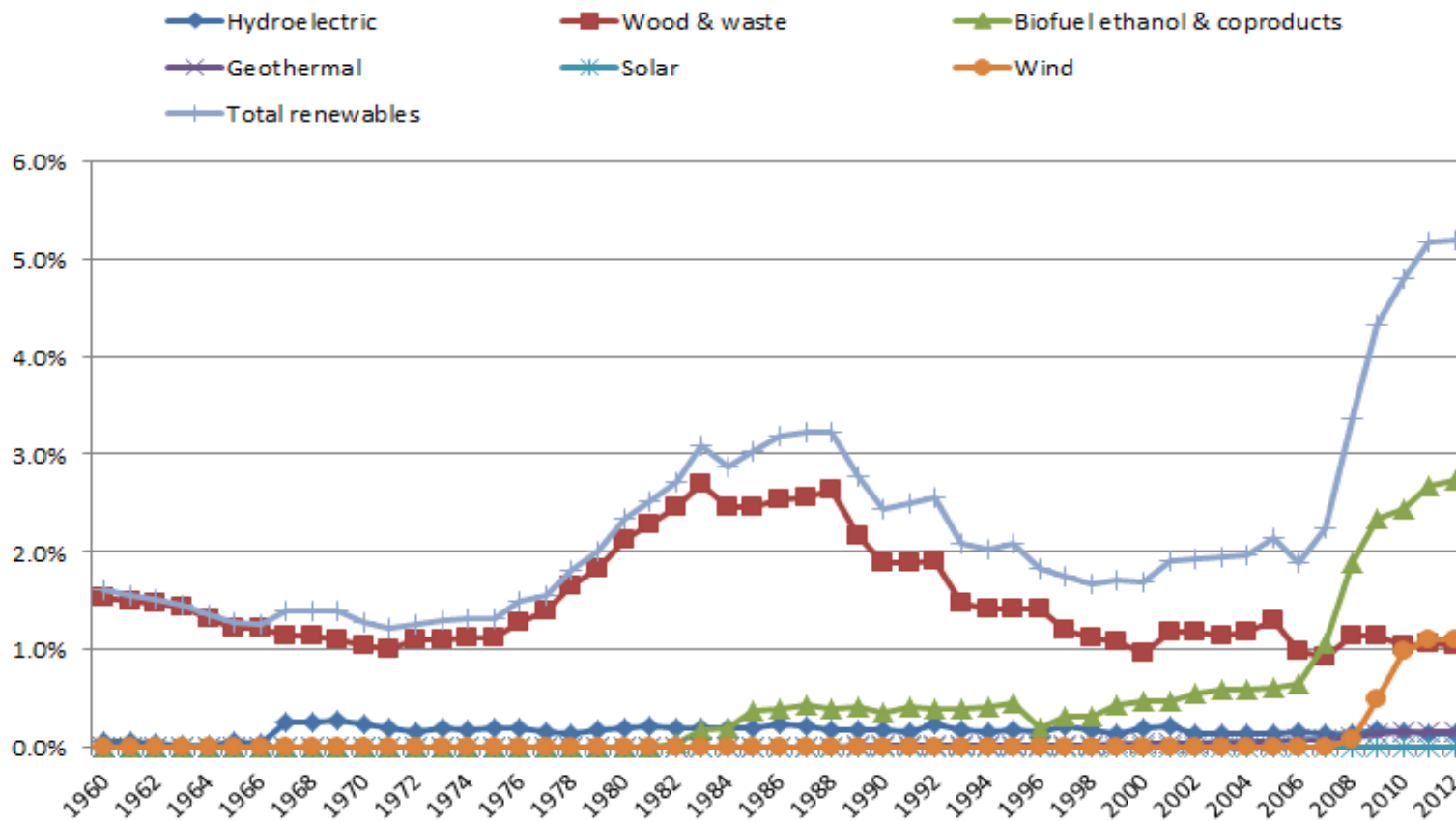
September 16, 2015

Renewables Share of U.S. Energy Consumption



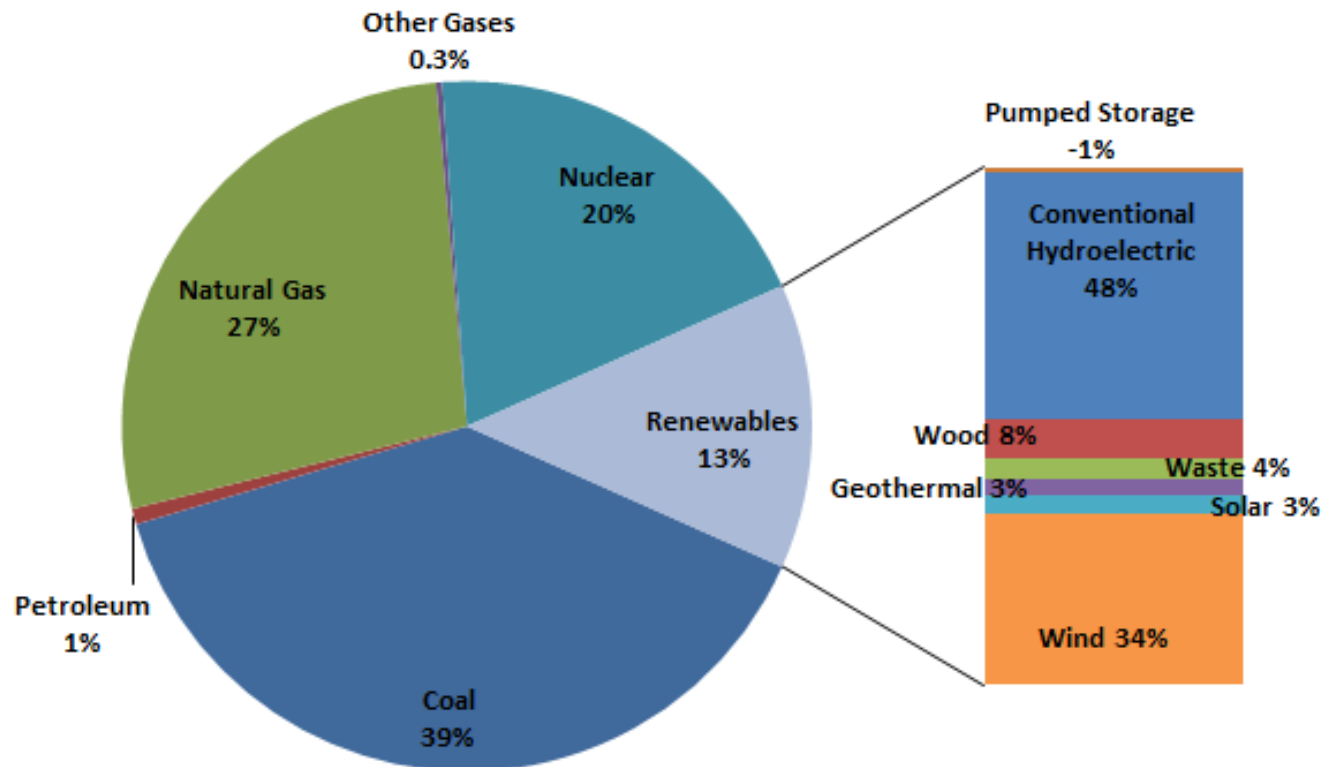
Data source: Energy Information Administration (EIA)

Renewables Share of Indiana Energy Consumption



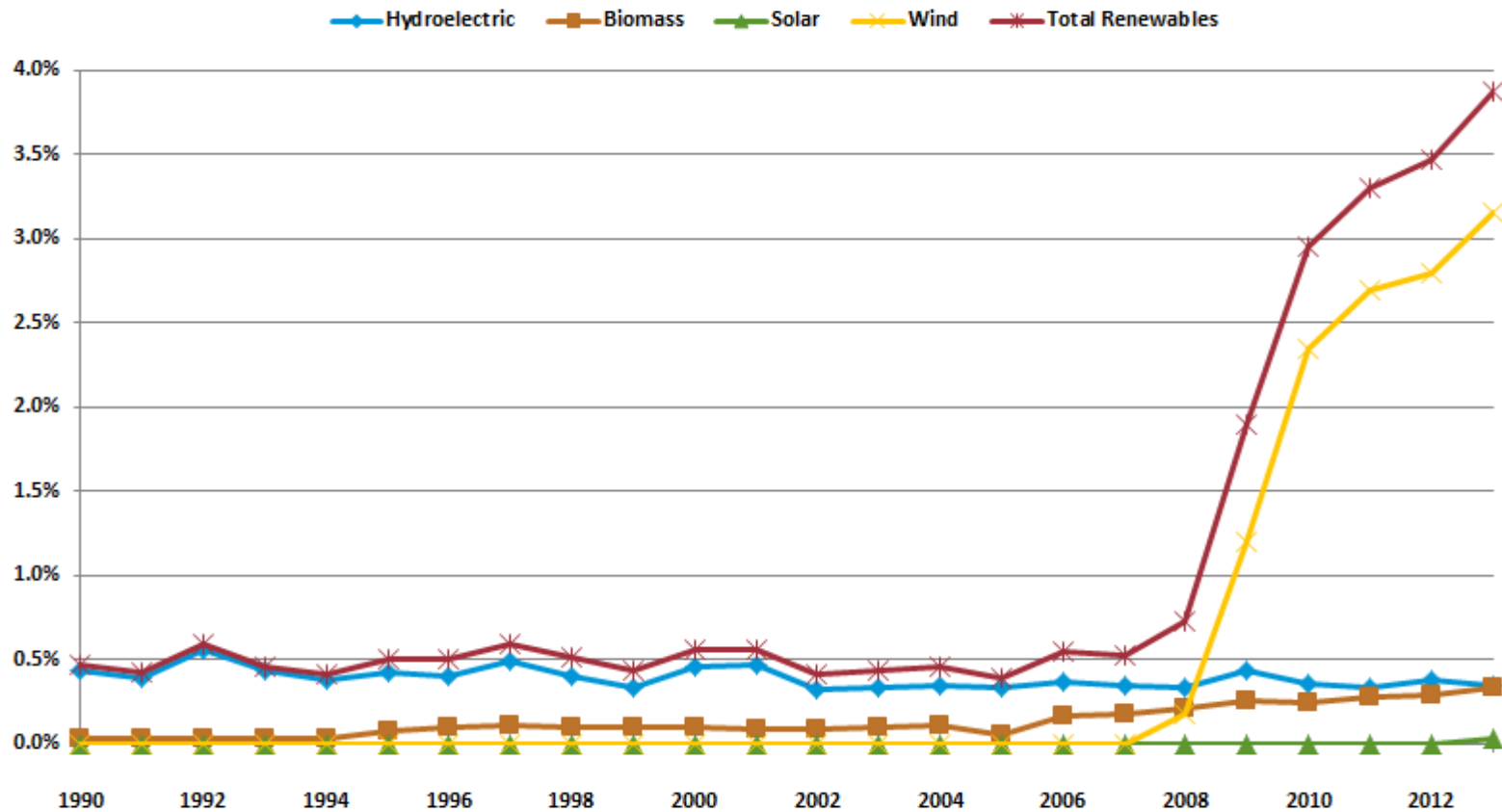
Data source: EIA

2014 U.S. Electricity Generation by Energy Source



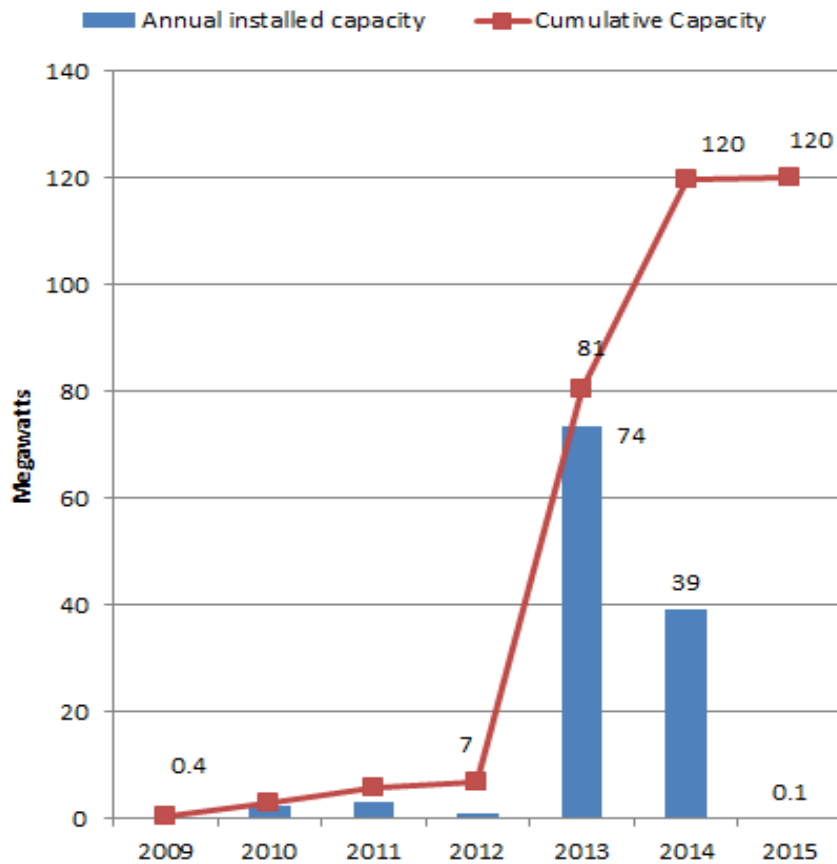
Data source: EIA

Renewables Share of Indiana Electricity Generation



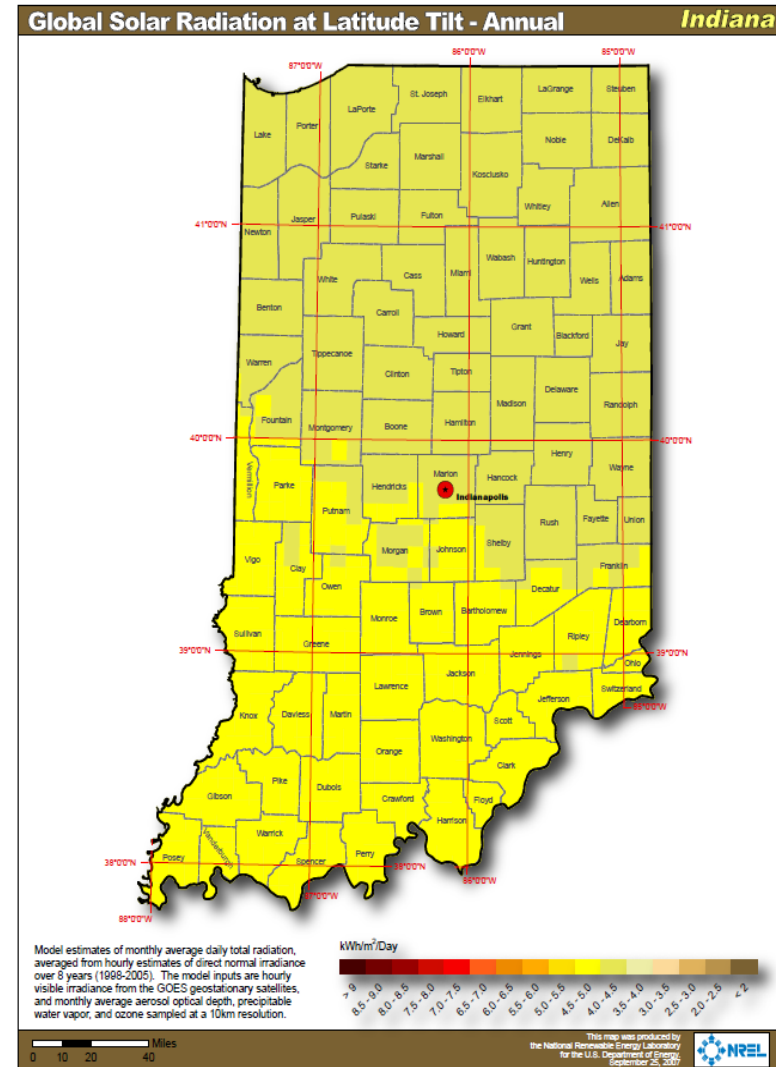
Data source: EIA

Solar Energy



Photovoltaic capacity in Indiana

Data source: National Renewable Energy Laboratory



Factors Affecting Development

- Cost
 - Most renewable technologies have high capital costs
- Incentives
 - Production/investment tax credits
- Tariffs
 - Feed-in tariffs, net metering, standby rates
- Limited availability for some resources
 - Solar/photovoltaics, hydropower
- Intermittency for some resources
 - Solar/photovoltaics, wind

Further Information

State Utility Forecasting Group

765-494-4223

sufg@ecn.purdue.edu

<http://www.purdue.edu/discoverypark/energy/SUG/>

Douglas Gotham

765-494-0851

gotham@purdue.edu