

PURDUE IMAGING FACILITY RETURN TO RESEARCH

Reopening Town Hall

EVPRP Return to Research Guidance

Three layered Return to Research plan

- Safe Buildings
 - New safety standards and procedures in public spaces

- Safe Research Spaces
 - De-densify space
 - New Covid-specific SOPs

- Safe People
 - Protect Purdue personal responsibility
 - Covid training required before return to lab

EVPRP Return to Research Guidance

Safe Buildings

- Be aware of new signs in public spaces
- Follow floor arrows when present
- Wash hands frequently
 - Hand sanitizer stations located around Bindley and Hansen
- Restroom and elevator occupancy may be limited
- Access to Bindley and Hansen is limited to a single entrance
 - BIND main entrance on the east side
 - HANS main entrance on east side facing S. University St.

EVPRP Return to Research Guidance

Safe Research Spaces

- All core facilities have new, Covid-19 SOPs
- Minimize contact time between people
 - De-densify spaces and limit lab occupancy
- Maintain separation between people using the space simultaneously
- Minimize cross contamination for shared instruments

EVPRP Return to Research Guidance

Safe People

- Read and abide by the Protect Purdue pledge
 - <https://protect.purdue.edu/pledge/>
- Follow all university safety and hygiene guidelines
- DO NOT come to the core if you are feeling ill, or have any symptoms consistent with Covid-19
- Work remotely to the extent possible
 - All consultation and meetings will be virtual
 - Software training and data analysis will be done remotely
- Review the Covid-19 risk matrix and take appropriate action to protect yourself
 - <https://www.purdue.edu/hr/COVID-19/assessment.php>

Return to Research Procedures

Gaining access to the lab

- All users **MUST** complete all of the Covid training items before returning to the core facility.
 - Access will be removed until training is complete!
- Complete the Covid-19 online training in Success Factors
 - <https://www.purdue.edu/ehps/rem/worker/COVID-19%20Resources.html>
- Review the background materials
 - https://protect.purdue.edu/app/uploads/2020/05/COVID19-Research-Space-SOPBackground-Preread-May22_pdf_ADA.pdf
- Read the Imaging Covid-19 Core Lab SOP
- Susan McCreery (smccreery@purdue.edu) will be sending out emails with all necessary attachments, links, and signature pages

Return to Research Procedures

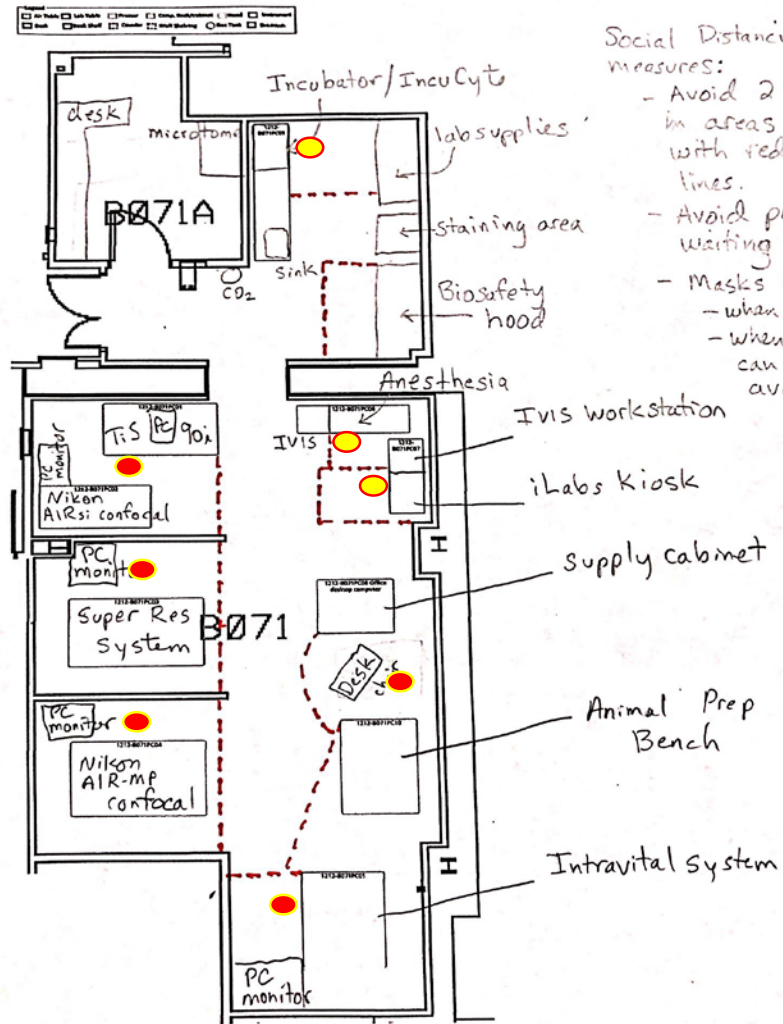
Core Lab Covid-19 SOP

- Lab engineering controls and workflow
- iLabs
- Using Instruments
- Hygiene plan
- Support and Training

Bindley B071 Lab Floor Plan

- Person 1-3 hours ^{Map}
- Person 5-20 mins

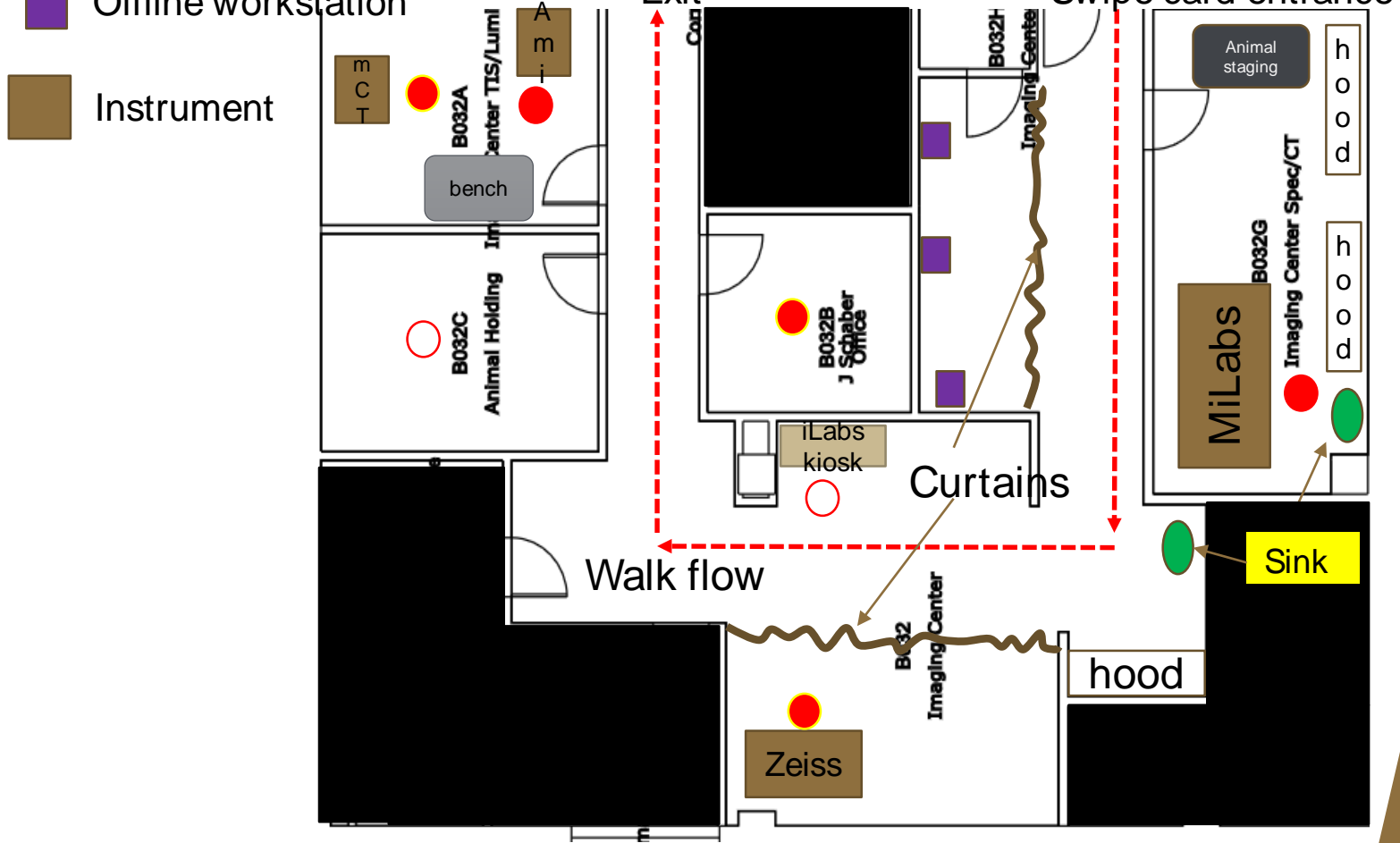
<https://hub.bbc.purdue.edu/palms/map.php>



- Social Distancing measures:
- Avoid 2 people in areas marked with red dashed lines.
 - Avoid prolonged waiting
 - Masks must be worn
 - when entering/leaving
 - when left distan: can not be avoided

Hansen B-032 Lab Floor Plan

- Person 1-3 hours
- Person less than 30min
- Offline workstation
- Instrument



Imaging Core Lab Covid-19 SOP

iLabs Reservations

- Instruments may not be reserved back to back
 - 15 minute buffer between reservations to allow cleaning
- No extension (buffer) time for reservations
- Calendar will be OPEN allowing users to view and make reservation
 - All reservations must be approved by the core staff
 - Automatic email will confirm reservation accepted
- Start and stop session using Kiosk computer

Imaging Core Lab Covid-19 SOP

Using Instruments

- Only one person per instrument room
 - AMI and mCT may not be used simultaneously
- Follow the hygiene plan outlined in the SOP for instrument cleaning
 - Perform before and after your iLab session
- All data analysis should be done remotely via Teamviewer
 - Contact Natasha Nikolaidis (nnikolai@purdue.edu) and cc Andy (schaber@purdue.edu) to request access
- Masks worn in the common areas within the facilities
 - Not required when one person present during your session
- Microscope users: **MUST** wear goggles or eye glasses when viewing through the binoculars

Imaging Core Lab Covid-19 SOP

Hygiene Plan

- Wash hands on entering the lab, and before leaving
- Disinfect all touch points (see SOP for details)
 - Before and after session
 - Do not assume the person before you has cleaned!
- Gloves are not required during imaging session
 - Wear gloves for disinfection only
 - Wear gloves as usual for animal work
- Follow the hygiene plan outlined in the SOP for instrument cleaning
 - Plan will be provided in same room as instrument
 - 70% EtOH and wipes provided near instrument
- Disinfect Kiosk computer mouse

Imaging Core Lab Covid-19 SOP

Support and Training

- All support and software training will be conducted remotely, via Teamviewer
 - May consider installing a mobile camera for visual requirements
 - Would consider Skype or FaceTime to support technical questions
- Instrument training (face to face) is on hold
- Face to face support/training requires enhanced PPE
 - Waiting for recommendations from REM
 - Waiting to hear about availability of PPE

THANK YOU

Protect Myself. Protect Others. Protect Purdue. Together.

Andy Schaber

schaber@purdue.edu

Natasha Nikolaidis

nnikolai@purdue.edu