

## Regional Campus Fast Facts

(for Fall Semester 2012-13)

**PURDUE**  
UNIVERSITY

**DATA DIGEST** WEST LAFAYETTE  
2012-2013

### Calumet

Chancellor Thomas L. Keon

#### Location and Homepage Address

2200 169th Street  
Hammond, IN 46323-2094  
<http://www.calumet.purdue.edu/>

#### Accreditation

The Higher Learning Commission of the North Central Association of Colleges and Schools

#### Academic Schools

Education; Engineering, Mathematics & Science; Liberal Arts & Social Sciences; Management; Nursing; Technology

#### Headcount Enrollment Fall 2012-13

Undergraduate	8,912
Graduate	1,142
<b>Total</b>	<b>10,054</b>

	AY 2011-12	Cumulative (1966-67 to 2011-12)
<b>Degrees Awarded</b>		
Associate	116	13,001
Baccalaureate	1,004	24,954
Master's	342	7,814
<b>Total</b>	<b>1,462</b>	<b>45,769</b>

#### Tuition and Fees for Academic Year 2012-13

Undergraduate Resident	\$6,959
Undergraduate Nonresident	15,720
Graduate Resident	6,781
Graduate Nonresident	14,441

#### Faculty and Staff Headcount Fall 2012-13

Tenured and Tenure-Track Faculty	241
Lecturers	301
Other Academic Staff	34
Adjunct Faculty	4
Management (Executive & Supervisory Staff)	44
Administrative & Professional Staff	227
Clerical & Service Staff	222
Graduate Student Staff	186
<b>Total</b>	<b>1,259</b>

Budgeted Revenues for 2012-13 (in Millions) \$129.9

Calumet Lands (in acres) 202

### Indiana-Purdue Fort Wayne

Chancellor Vicky L. Carwein

#### Location and Homepage Address

2101 E. Coliseum Blvd.  
Fort Wayne, IN 46805-1499  
<http://www.ipfw.edu/>

#### Accreditation

The Higher Learning Commission of the North Central Association of Colleges and Schools

#### Academic Schools

Arts and Sciences; Business & Management Sciences; Continuing Studies; Education; Engineering, Technology & Computer Science; Health & Human Services; Labor Studies; Organizational Leadership & Supervision; Public & Environmental Affairs; Visual & Performing Arts

#### Headcount Enrollment Fall 2012-13

Undergraduate	13,117
Graduate	654
<b>Total</b>	<b>13,771</b>

	AY 2011-12	Cumulative (1966-67 to 2011-12)
<b>Degrees Awarded</b>		
Associate	330	20,798
Baccalaureate	1,293	31,267
Master's	257	9,266
<b>Total</b>	<b>1,880</b>	<b>61,331</b>

#### Tuition and Fees for Academic Year 2012-13

Undergraduate Resident	\$7,640
Undergraduate Nonresident	18,350
Graduate Resident	7,535
Graduate Nonresident	17,063

#### Faculty and Staff Headcount Fall 2012-13

Tenured and Tenure-Track Faculty	325
Lecturers	495
Other Academic Staff	47
Adjunct Faculty	202
Management (Executive & Supervisory Staff)	51
Administrative & Professional Staff	272
Clerical & Service Staff	434
Graduate Student Staff	95
<b>Total</b>	<b>1,921</b>

Budgeted Revenues for 2012-13 (in Millions) \$187.1

Indiana-Purdue Fort Wayne Lands (in acres) 683

### North Central

Chancellor James B. Dworkin

#### Location and Homepage Address

1401 S. U.S.421  
Westville, IN 46391  
<http://www.pnc.edu/>

#### Accreditation

The Higher Learning Commission of the North Central Association of Colleges and Schools

#### Academic Schools

Behavioral, Social Sciences & Humanities; Biology/Chemistry; Business; Computer Technology; Developmental Studies; Elementary Education; Engineering & Technology; Letters & Languages; Liberal Arts; Mathematics/Statistics/Physics; Nursing; Science

#### Headcount Enrollment Fall 2012-13

Undergraduate	5,982
Graduate	66
<b>Total</b>	<b>6,048</b>

	AY 2011-12	Cumulative (1968-69 to 2011-12)
<b>Degrees Awarded</b>		
Associate	152	8,401
Baccalaureate	406	5,570
Master's	26	527
<b>Total</b>	<b>584</b>	<b>14,498</b>

#### Tuition and Fees for Academic Year 2012-13

Undergraduate Resident	\$7,044
Undergraduate Nonresident	16,769
Graduate Resident	6,845
Graduate Nonresident	15,409

#### Faculty and Staff Headcount Fall 2012-13

Tenured and Tenure-Track Faculty	94
Lecturers	175
Other Academic Staff	11
Adjunct Faculty	7
Management (Executive & Supervisory Staff)	9
Administrative & Professional Staff	88
Clerical & Service Staff	116
Graduate Student Staff	3
<b>Total</b>	<b>503</b>

Budgeted Revenues for 2012-13 (in Millions) \$47.1

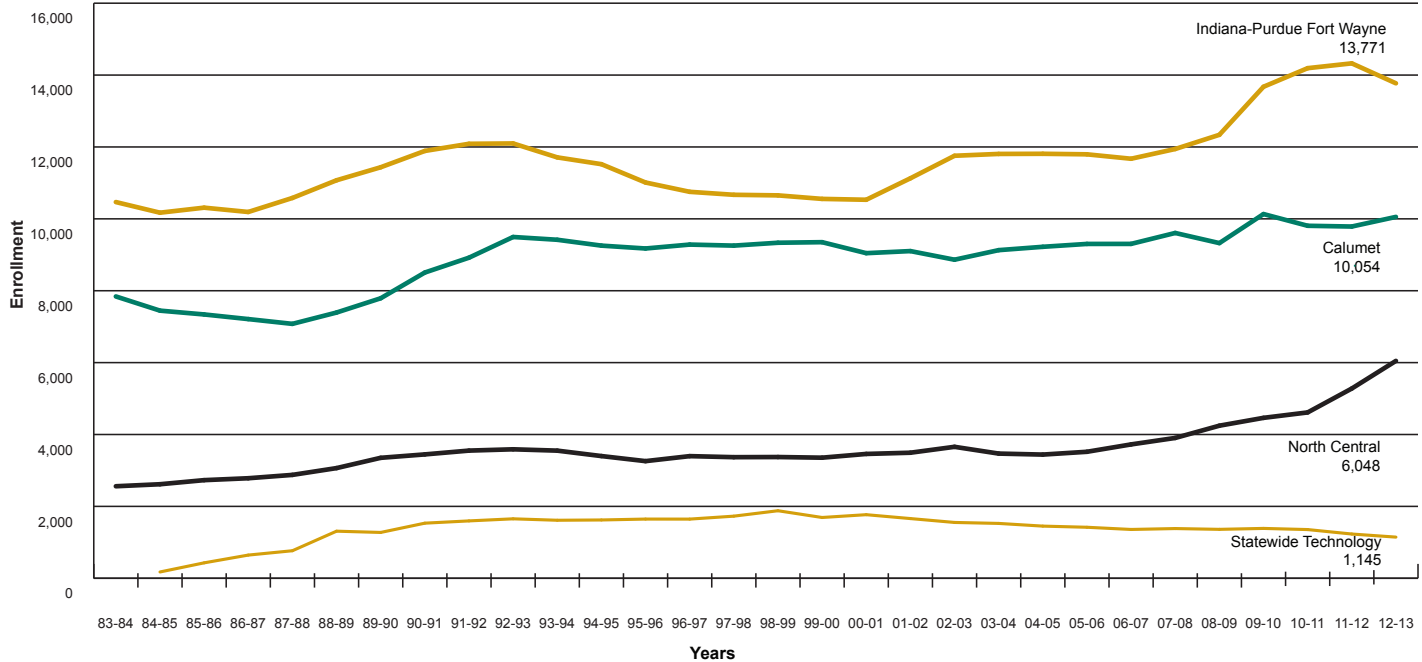
North Central Lands (in acres) 269

Source: Office of Institutional Research

## Regional Campus Historical Enrollment

(for Fall Semester in Academic Years 1983-84 through 2012-13)

Thirty Years of Enrollment at Regional Campuses



Source: Office of Institutional Research, Calumet Institutional Research and Assessment, IPFW Institutional Research and Analysis, North Central Office of Institutional Research

# Regional Campus Enrollment by Full-Time<sup>1</sup> and Part-Time and Full-Time Equivalency (FTE)<sup>2</sup>

(for Fall Semester in Academic Years 2008-09 through 2012-13)

<b>Calumet</b>		2008-09	2009-10	2010-11	2011-12	2012-13
<b>Undergraduate</b>	Full-Time	5,529	5,858	5,888	5,535	5,140
	Part-Time	2,824	3,147	2,776	3,104	3,772
Total Headcount		8,353	9,005	8,664	8,639	8,912
Total FTE		6,189	6,637	6,489	6,262	6,250
<hr/>						
<b>Graduate</b>	Full-Time	207	293	262	325	370
	Part-Time	765	835	881	822	772
Total Headcount		972	1,128	1,143	1,147	1,142
Total FTE		472	580	564	609	620
<hr/>						
<b>Total</b>	Full-Time	5,736	6,151	6,150	5,860	5,510
	Part-Time	3,589	3,982	3,657	3,926	4,544
Grand Total Headcount Enrollment		9,325	10,133	9,807	9,786	10,054
Grand Total Full-time Equivalency		6,662	7,217	7,053	6,871	6,870

<b>North Central</b>		2008-09	2009-10	2010-11	2011-12	2012-13
<b>Undergraduate</b>	Full-Time	2,558	2,761	2,844	2,589	2,701
	Part-Time	1,584	1,618	1,698	2,612	3,281
Total Headcount		4,142	4,379	4,542	5,201	5,982
Total FTE		2,910	3,079	3,214	3,228	3,658
<hr/>						
<b>Graduate</b>	Full-Time	39	0	0	1	0
	Part-Time	64	84	72	77	66
Total Headcount		103	84	72	78	66
Total FTE		65	35	34	35	29
<hr/>						
<b>Total</b>	Full-Time	2,597	2,761	2,844	2,590	2,701
	Part-Time	1,648	1,702	1,770	2,689	3,347
Grand Total Headcount Enrollment		4,245	4,463	4,614	5,279	6,048
Grand Total Full-time Equivalency		2,975	3,114	3,248	3,263	3,687

<b>Indiana-Purdue Fort Wayne</b>		2008-09	2009-10	2010-11	2011-12	2012-13
<b>Undergraduate</b>	Full-Time	7,587	8,389	8,855	8,585	7,870
	Part-Time	3,991	4,487	4,547	5,023	5,247
Total Headcount		11,578	12,876	13,402	13,608	13,117
Total FTE		8,399	9,240	9,711	9,634	9,031
<hr/>						
<b>Graduate</b>	Full-Time	85	151	152	125	138
	Part-Time	675	648	638	593	516
Total Headcount		760	799	790	718	654
Total FTE		338	398	381	353	345
<hr/>						
<b>Total</b>	Full-Time	7,672	8,540	9,007	8,710	8,008
	Part-Time	4,666	5,135	5,185	5,616	5,763
Grand Total Headcount Enrollment		12,338	13,675	14,192	14,326	13,771
Grand Total Full-time Equivalency		8,737	9,638	10,092	9,987	9,376

<b>Statewide Technology</b>		2008-09	2009-10	2010-11	2011-12	2012-13
<b>Undergraduate</b>	Full-Time	548	711	716	680	626
	Part-Time	813	676	639	551	519
Total Headcount		1,361	1,387	1,355	1,231	1,145
Total FTE		824	931	919	848	797
<hr/>						
<b>Graduate</b>	Full-Time	0	0	0	0	0
	Part-Time	0	0	0	0	0
Total Headcount		0	0	0	0	0
Total FTE		0	0	0	0	0
<hr/>						
<b>Total</b>	Full-Time	548	711	716	680	626
	Part-Time	813	676	639	551	519
Grand Total Headcount Enrollment		1,361	1,387	1,355	1,231	1,145
Grand Total Full-time Equivalency		824	931	919	848	797

<sup>1</sup>Full-time students are defined as undergraduate and professional students who carry a credit hour load of at least 12 hours, and graduate students who carry at least nine hours.

<sup>2</sup>Full-Time Equivalency (FTE) is calculated by dividing total credit hours by 15 for undergraduate, professional, and certificate students and by 12 for graduate students.

## Regional Campus Enrollment by Gender

(for Fall Semester in Academic Years 2008-09 through 2012-13)

Calumet	2008-09	2009-10	2010-11	2011-12	2012-13
Men	4,051	4,522	4,344	4,332	4,174
Women	5,274	5,611	5,463	5,454	5,880
Percent Women	56.6%	55.4%	55.7%	55.7%	58.5%

---

Indiana-Purdue Fort Wayne	2008-09	2009-10	2010-11	2011-12	2012-13
Men	5,414	6,095	6,347	6,390	6,121
Women	6,924	7,580	7,845	7,936	7,650
Percent Women	56.1%	55.4%	55.3%	55.4%	55.6%

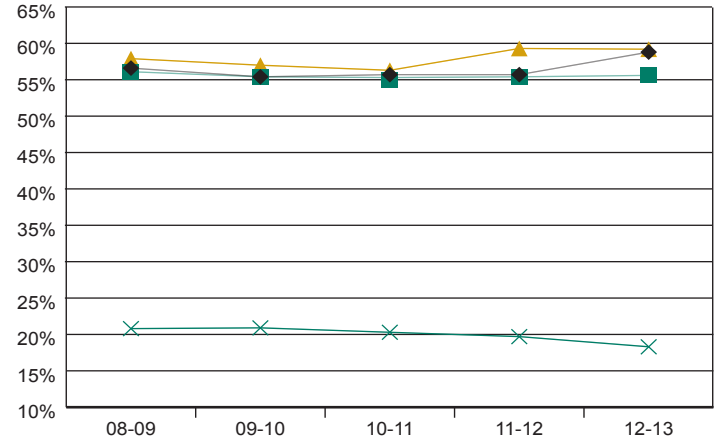
---

North Central	2008-09	2009-10	2010-11	2011-12	2012-13
Men	1,787	1,919	2,016	2,146	2,467
Women	2,458	2,544	2,598	3,132	3,581
Percent Women	57.9%	57.0%	56.3%	59.3%	59.2%

---

Statewide Technology	2008-09	2009-10	2010-11	2011-12	2012-13
Men	1,078	1,097	1,080	988	936
Women	283	290	275	243	209
Percent Women	20.8%	20.9%	20.3%	19.7%	18.3%

### Women Enrolled



◆ Calumet    ■ IPFW    ▲ North Central    × Statewide Technology

Source: Office of Institutional Research, Calumet Institutional Research and Assessment, IPFW Institutional Research and Analysis, North Central Office of Institutional Research

## Regional Campus Enrollment by Race/Ethnicity

(for Fall Semester in Academic Years 2008-09 through 2012-13)

Calumet	2008-09	2009-10	2010-11	2011-12	2012-13
African American	1,569	1,733			
American Indian	26	37			
Asian American	134	166			
Hispanic American	1,315	1,413			
White and Other	5,822	6,227			
American Indian or Alaska Native			35	32	25
Asian			165	173	196
Black or African American			1,621	1,476	1,353
Hispanic or Latino			1,546	1,467	1,457
Native Hawaiian or Other Pacific Islander			11	3	9
Two or More Races			113	124	134
Unknown			185	189	742
White			5,518	5,676	5,479
International <sup>1</sup>	459	557	613	646	659
<b>Total Enrollment</b>	<b>9,325</b>	<b>10,133</b>	<b>9,807</b>	<b>9,786</b>	<b>10,054</b>
<b>Minorities</b>	<b>3,044</b>	<b>3,349</b>	<b>3,491</b>	<b>3,275</b>	<b>3,174</b>
<b>U.S. Students<sup>2</sup></b>	<b>8,866</b>	<b>9,576</b>	<b>9,194</b>	<b>9,140</b>	<b>9,395</b>
<b>Percent Minority of U.S. Students<sup>3</sup></b>	<b>34.3%</b>	<b>35.0%</b>	<b>38.0%</b>	<b>35.8%</b>	<b>33.8%</b>
<b>Underrepresented Minority (URM)<sup>4</sup></b>	<b>2,910</b>	<b>3,183</b>	<b>3,309</b>	<b>3,086</b>	<b>2,963</b>
<b>Percent Underrepresented Minority (URM)</b>	<b>32.8%</b>	<b>33.2%</b>	<b>36.0%</b>	<b>33.8%</b>	<b>31.5%</b>

<sup>1</sup>International count is based on citizenship/visa codes.

<sup>2</sup>Total U.S. Students is calculated by taking Total Enrollment minus the International student headcount.

<sup>3</sup>Total Percent Minority is calculated by taking Minorities divided by U.S. Students.

<sup>4</sup>Underrepresented Minority includes any indication of American Indian or Alaska Native, Black or African American, Hispanic or Latino, or Native Hawaiian/Other Pacific Islanders, including a break out of those from the Two or More Races category.

The United States Office of Management and Budget (OMB) issued standards for maintaining, collecting, and reporting federal data on race and ethnicity. Institutions are required to report the new categories in the Integrated Postsecondary Education Data System (IPEDS) surveys to the U.S. Department's National Center for Education Statistics (NCES).

Source: Office of Institutional Research, Calumet Institutional Research and Assessment, IPFW Institutional Research and Analysis, North Central Office of Institutional Research

Indiana-Purdue Fort Wayne	2008-09	2009-10	2010-11	2011-12	2012-13
African American	719	917			
American Indian	45	56			
Asian American	260	298			
Hispanic American	377	444			
White and Other	10,792	11,795			
American Indian or Alaska Native			64	57	47
Asian			284	302	315
Black or African American			1,045	1,024	796
Hispanic or Latino			536	624	668
Native Hawaiian or Other Pacific Islander			7	5	6
Two or More Races			202	261	352
Unknown			224	185	87
White			11,633	11,648	11,272
International <sup>1</sup>	145	165	197	220	228
<b>Total Enrollment</b>	<b>12,338</b>	<b>13,675</b>	<b>14,192</b>	<b>14,326</b>	<b>13,771</b>
<b>Minorities</b>	<b>1,401</b>	<b>1,715</b>	<b>2,138</b>	<b>2,273</b>	<b>2,184</b>
<b>U.S. Students<sup>2</sup></b>	<b>12,193</b>	<b>13,510</b>	<b>13,995</b>	<b>14,106</b>	<b>13,543</b>
<b>Percent Minority of U.S. Students<sup>3</sup></b>	<b>11.5%</b>	<b>12.7%</b>	<b>15.3%</b>	<b>16.1%</b>	<b>16.1%</b>
<b>Underrepresented Minority (URM)<sup>4</sup></b>	<b>1,141</b>	<b>1,417</b>	<b>1,728</b>	<b>1,799</b>	<b>1,624</b>
<b>Percent Underrepresented Minority (URM)</b>	<b>9.4%</b>	<b>10.5%</b>	<b>12.3%</b>	<b>12.8%</b>	<b>12.0%</b>

## Regional Campus Enrollment by Race/Ethnicity

(for Fall Semester in Academic Years 2008-09 through 2012-13 - continued)

North Central	2008-09	2009-10	2010-11	2011-12	2012-13
African American	267	296			
American Indian	30	32			
Asian American	44	47			
Hispanic American	203	223			
White and Other	3,693	3,854			
American Indian or Alaska Native			38	28	29
Asian			37	63	87
Black or African American			241	354	285
Hispanic or Latino			273	409	580
Native Hawaiian or Other Pacific Islander			5	4	5
Two or More Races			52	68	105
Unknown			0	47	9
White			3,960	4,298	4,926
International <sup>1</sup>	8	11	8	8	22
<b>Total Enrollment</b>	<b>4,245</b>	<b>4,463</b>	<b>4,614</b>	<b>5,279</b>	<b>6,048</b>
<b>Minorities</b>	<b>544</b>	<b>598</b>	<b>646</b>	<b>926</b>	<b>1,091</b>
<b>U.S. Students<sup>2</sup></b>	<b>4,237</b>	<b>4,452</b>	<b>4,606</b>	<b>5,271</b>	<b>6,026</b>
<b>Percent Minority of U.S. Students<sup>3</sup></b>	<b>12.8%</b>	<b>13.4%</b>	<b>14.0%</b>	<b>17.6%</b>	<b>18.1%</b>
<b>Underrepresented Minority (URM)<sup>4</sup></b>	<b>500</b>	<b>551</b>	<b>599</b>	<b>858</b>	<b>892</b>
<b>Percent Underrepresented Minority (URM)</b>	<b>11.8%</b>	<b>12.4%</b>	<b>13.0%</b>	<b>16.3%</b>	<b>14.8%</b>

<sup>1</sup>International count is based on citizenship/visa codes.

<sup>2</sup>Total U.S. Students is calculated by taking Total Enrollment minus the International student headcount.

<sup>3</sup>Total Percent Minority is calculated by taking Minorities divided by U.S. Students.

<sup>4</sup>Underrepresented Minority includes any indication of American Indian or Alaska Native, Black or African American, Hispanic or Latino, or Native Hawaiian/Other Pacific Islanders, including a break out of those from the Two or More Races category.

Statewide Technology	2008-09	2009-10	2010-11	2011-12	2012-13
African American	48	44			
American Indian	11	12			
Asian American	18	16			
Hispanic American	35	35			
White and Other	1,235	1,273			
American Indian or Alaska Native			7	10	6
Asian			13	12	16
Black or African American			43	43	30
Hispanic or Latino			29	26	36
Native Hawaiian or Other Pacific Islander			0	0	0
Two or More Races			6	6	2
Unknown			45	43	40
White			1,208	1,087	1,013
International <sup>1</sup>	12	7	4	4	2
<b>Total Enrollment</b>	<b>1,359</b>	<b>1,387</b>	<b>1,355</b>	<b>1,231</b>	<b>1,145</b>
<b>Minorities</b>	<b>112</b>	<b>107</b>	<b>98</b>	<b>97</b>	<b>90</b>
<b>U.S. Students<sup>2</sup></b>	<b>1,347</b>	<b>1,380</b>	<b>1,351</b>	<b>1,227</b>	<b>1,143</b>
<b>Percent Minority of U.S. Students<sup>3</sup></b>	<b>8.3%</b>	<b>7.8%</b>	<b>7.3%</b>	<b>7.9%</b>	<b>7.9%</b>
<b>Underrepresented Minority (URM)<sup>4</sup></b>	<b>94</b>	<b>91</b>	<b>85</b>	<b>85</b>	<b>73</b>
<b>Percent Underrepresented Minority (URM)</b>	<b>7.0%</b>	<b>6.6%</b>	<b>6.3%</b>	<b>6.9%</b>	<b>6.4%</b>

<sup>1</sup>International count is based on citizenship/visa codes.

<sup>2</sup>Total U.S. Students is calculated by taking Total Enrollment minus the International student headcount.

<sup>3</sup>Total Percent Minority is calculated by taking Minorities divided by U.S. Students.

<sup>4</sup>Underrepresented Minority includes any indication of American Indian or Alaska Native, Black or African American, Hispanic or Latino, or Native Hawaiian/Other Pacific Islanders, including a break out of those from the Two or More Races category.

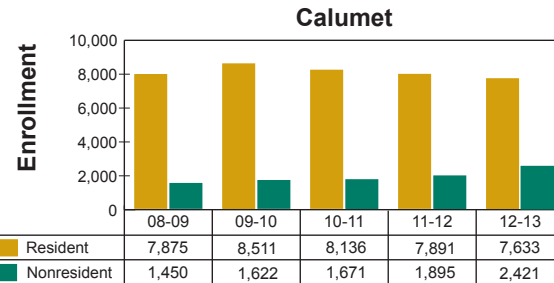
The United States Office of Management and Budget (OMB) issued standards for maintaining, collecting, and reporting federal data on race and ethnicity. Institutions are required to report the new categories in the Integrated Postsecondary Education Data System (IPEDS) surveys to the U.S. Department's National Center for Education Statistics (NCES).

Source: Office of Institutional Research, Calumet Institutional Research and Assessment, IPFW Institutional Research and Analysis, North Central Office of Institutional Research

## Regional Campus Enrollment by Level and Residency

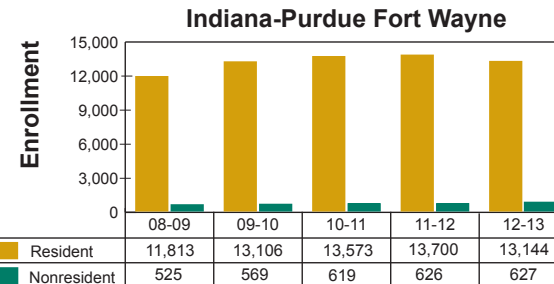
(for Fall Semester in Academic Years 2008-09 through 2012-13)

Calumet	2008-09	2009-10	2010-11	2011-12	2012-13
<b>Undergraduate</b>					
Resident	7,150	7,701	7,341	7,082	6,846
Nonresident	1,203	1,304	1,323	1,557	2,066
<b>Total</b>	<b>8,353</b>	<b>9,005</b>	<b>8,664</b>	<b>8,639</b>	<b>8,912</b>
<b>Graduate</b>					
Resident	725	810	795	809	787
Nonresident	247	318	348	338	355
<b>Total</b>	<b>972</b>	<b>1,128</b>	<b>1,143</b>	<b>1,147</b>	<b>1,142</b>
<b>Total Enrollment</b>	<b>9,325</b>	<b>10,133</b>	<b>9,807</b>	<b>9,786</b>	<b>10,054</b>



Fall Semester

Indiana-Purdue Fort Wayne	2008-09	2009-10	2010-11	2011-12	2012-13
<b>Undergraduate</b>					
Resident	11,089	12,354	12,836	13,028	12,537
Nonresident	489	522	566	580	580
<b>Total</b>	<b>11,578</b>	<b>12,876</b>	<b>13,402</b>	<b>13,608</b>	<b>13,117</b>
<b>Graduate</b>					
Resident	724	752	737	672	607
Nonresident	36	47	53	46	47
<b>Total</b>	<b>760</b>	<b>799</b>	<b>790</b>	<b>718</b>	<b>654</b>
<b>Total Enrollment</b>	<b>12,338</b>	<b>13,675</b>	<b>14,192</b>	<b>14,326</b>	<b>13,771</b>



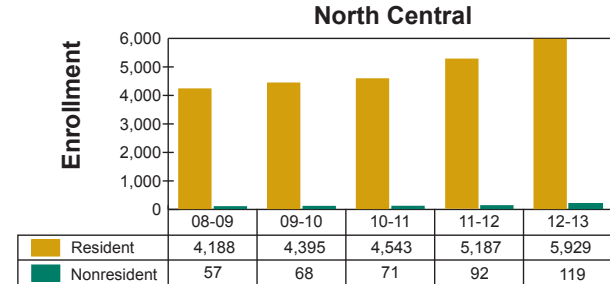
Fall Semester

Source: Office of Institutional Research, Calumet Institutional Research and Assessment, IPFW Institutional Research and Analysis, North Central Office of Institutional Research

## Regional Campus Enrollment by Level and Residency

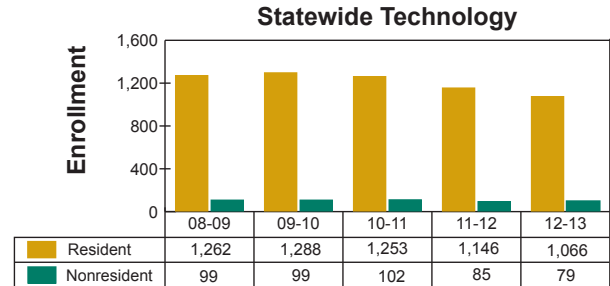
(for Fall Semester in Academic Years 2008-09 through 2012-13 — continued)

North Central	2008-09	2009-10	2010-11	2011-12	2012-13
<b>Undergraduate</b>					
Resident	4,088	4,314	4,478	5,115	5,864
Nonresident	54	65	64	86	118
<b>Total</b>	<b>4,142</b>	<b>4,379</b>	<b>4,542</b>	<b>5,201</b>	<b>5,982</b>
<b>Graduate</b>					
Resident	100	81	65	72	65
Nonresident	3	3	7	6	1
<b>Total</b>	<b>103</b>	<b>84</b>	<b>72</b>	<b>78</b>	<b>66</b>
<b>Total Enrollment</b>	<b>4,245</b>	<b>4,463</b>	<b>4,614</b>	<b>5,279</b>	<b>6,048</b>



Fall Semester

Statewide Technology	2008-09	2009-10	2010-11	2011-12	2012-13
<b>Undergraduate</b>					
Resident	1,262	1,288	1,253	1,146	1,066
Nonresident	99	99	102	85	79
<b>Total</b>	<b>1,361</b>	<b>1,387</b>	<b>1,355</b>	<b>1,231</b>	<b>1,145</b>
<b>Graduate</b>					
Resident	0	0	0	0	0
Nonresident	0	0	0	0	0
<b>Total</b>	<b>0</b>	<b>0</b>	<b>0</b>	<b>0</b>	<b>0</b>
<b>Total Enrollment</b>	<b>1,361</b>	<b>1,387</b>	<b>1,355</b>	<b>1,231</b>	<b>1,145</b>



Fall Semester

Source: Office of Institutional Research, Calumet Institutional Research and Assessment, IPFW Institutional Research and Analysis, North Central Office of Institutional Research



# Regional Campus Retention, Graduation Rates, and Degrees Conferred by Level

(for Academic Years 2007-08 through 2011-12)

## Retention and Graduation Rates of New First-Year Students

Calumet	Cohort Year				
	2007-08	2008-09	2009-10	2010-11	2011-12
1-Year Retention Rates <sup>1</sup>	62.7%	68.6%	69.2%	68.5%	69.2%
	Cohort Year				
	2001-02	2002-03	2003-04	2004-05	2005-06
6-Year Graduation Rates	22.8%	21.5%	28.7%	25.8%	28.5%
Peer Average Rates	44.4%	46.3%	46.4%	46.4%	46.6%

Indiana-Purdue Fort Wayne	Cohort Year				
	2007-08	2008-09	2009-10	2010-11	2011-12
1-Year Retention Rates <sup>1</sup>	62.6%	62.5%	61.4%	59.6%	61.7%
	Cohort Year				
	2001-02	2002-03	2003-04	2004-05	2005-06
6-Year Graduation Rates	25.5%	24.0%	26.4%	25.2%	26.7%
Peer Average Rates	33.6%	33.3%	34.2%	35.3%	35.6%

North Central	Cohort Year				
	2007-08	2008-09	2009-10	2010-11	2011-12
1-Year Retention Rates <sup>1</sup>	56.9%	54.4%	58.2%	50.6%	61.6%
	Cohort Year				
	2001-02	2002-03	2003-04	2004-05	2005-06
6-Year Graduation Rates	19.5%	20.5%	27.0%	23.4%	23.4%
Peer Average Rates	27.0%	28.4%	28.3%	28.1%	28.6%

<sup>1</sup>First-time full-time degree-seeking students (IPEDS definition).

## Degrees Conferred by Level

Calumet	2007-08	2008-09	2009-10	2010-11	2011-12
Associate	251	160	125	159	116
Baccalaureate	854	856	890	977	1,004
<b>Total Undergraduate</b>	<b>1,105</b>	<b>1,016</b>	<b>1,015</b>	<b>1,136</b>	<b>1,120</b>
Master's	273	284	264	330	342
<b>Total Degrees</b>	<b>1,378</b>	<b>1,300</b>	<b>1,279</b>	<b>1,466</b>	<b>1,462</b>

Indiana-Purdue Fort Wayne	2007-08	2008-09	2009-10	2010-11	2011-12
Associate	453	466	452	377	330
Baccalaureate	994	1,009	1,157	1,144	1,293
<b>Total Undergraduate</b>	<b>1,447</b>	<b>1,475</b>	<b>1,609</b>	<b>1,521</b>	<b>1,623</b>
Master's	192	207	225	243	257
<b>Total Degrees</b>	<b>1,639</b>	<b>1,682</b>	<b>1,834</b>	<b>1,764</b>	<b>1,880</b>

North Central	2007-08	2008-09	2009-10	2010-11	2011-12
Associate	183	190	228	196	152
Baccalaureate	319	322	318	382	406
<b>Total Undergraduate</b>	<b>502</b>	<b>512</b>	<b>546</b>	<b>578</b>	<b>558</b>
Master's	20	37	33	31	26
<b>Total Degrees</b>	<b>522</b>	<b>549</b>	<b>579</b>	<b>609</b>	<b>584</b>

Statewide Technology	2007-08	2008-09	2009-10	2010-11	2011-12
Associate	117	83	136	146	106
Baccalaureate	94	60	107	151	166
<b>Total Undergraduate</b>	<b>211</b>	<b>143</b>	<b>243</b>	<b>297</b>	<b>272</b>
<b>Total Degrees</b>	<b>211</b>	<b>143</b>	<b>243</b>	<b>297</b>	<b>272</b>

## Regional Campus Faculty and Staff Headcount

(for Fall in Academic Years 2008-09 through 2012-13)

Calumet	2008-09	2009-10	2010-11	2011-12	2012-13
Tenured/Tenure Track Faculty	243	250	256	239	241
Clinical/Professional and Research Faculty; Visiting Faculty; Post Docs; Continuing Lecturers	72	69	72	77	81
Limited-Term Lecturers	216	242	267	257	254
Management (non-faculty)	43	44	42	37	44
Administrative Staff	117	127	127	119	134
Professional Staff	101	98	100	101	93
Clerical Staff	124	123	112	115	102
Service Staff	98	109	122	117	120
Graduate Student Staff	187	220	200	201	186
Subtotal Compensated by Purdue	1,201	1,282	1,298	1,263	1,255
Adjunct Faculty (Compensated External to Purdue)	0	0	3	3	4
<b>Total Faculty and Staff</b>	<b>1,201</b>	<b>1,282</b>	<b>1,301</b>	<b>1,266</b>	<b>1,259</b>

Indiana-Purdue Fort Wayne <sup>1</sup>	2008-09	2009-10	2010-11	2011-12	2012-13
Tenured/Tenure Track Faculty	323	323	339	325	325
Clinical/Professional and Research Faculty; Visiting Faculty; Post Docs; Continuing Lecturers	81	92	99	107	110
Limited-Term Lecturers	374	404	400	450	432
Management (non-faculty)	44	48	46	53	51
Administrative Staff	141	165	161	172	165
Professional Staff	103	104	99	112	107
Clerical Staff	197	203	196	202	192
Service Staff	198	230	234	230	242
Graduate Student Staff	85	106	113	110	95
Subtotal Compensated by Purdue	1,546	1,675	1,687	1,761	1,719
Adjunct Faculty (Compensated External to Purdue)	99	125	136	162	202
<b>Total Faculty and Staff</b>	<b>1,645</b>	<b>1,800</b>	<b>1,823</b>	<b>1,923</b>	<b>1,921</b>

<sup>1</sup>Includes Purdue and Indiana University faculty and staff.

# PURDUE UNIVERSITY DATA DIGEST WEST LAFAYETTE 2012-2013

North Central	2008-09	2009-10	2010-11	2011-12	2012-13
Tenured/Tenure Track Faculty	97	104	101	98	94
Clinical/Professional and Research Faculty; Visiting Faculty; Post Docs; Continuing Lecturers	22	17	23	26	30
Limited-Term Lecturers	166	192	192	162	156
Management (non-faculty)	14	16	14	11	9
Administrative Staff	54	58	58	66	64
Professional Staff	25	29	29	27	24
Clerical Staff	49	50	50	46	44
Service Staff	68	76	76	72	72
Graduate Student Staff	2	4	5	1	3
Subtotal Compensated by Purdue	497	546	548	509	496
Adjunct Faculty (Compensated External to Purdue)	6	7	7	7	7
<b>Total Faculty and Staff</b>	<b>503</b>	<b>553</b>	<b>555</b>	<b>516</b>	<b>503</b>

Statewide Technology	2008-09	2009-10	2010-11	2011-12	2012-13
Tenured/Tenure Track Faculty	35	37	33	26	25
Clinical/Professional and Research Faculty; Visiting Faculty; Post Docs; Continuing Lecturers	10	10	10	10	10
Limited-Term Lecturers	58	44	50	52	51
Management (non-faculty)	4	4	3	3	4
Administrative Staff	6	6	6	3	4
Professional Staff	14	12	12	12	14
Clerical Staff	11	12	11	11	11
Service Staff	5	5	5	5	4
Graduate Student Staff	0	1	2	1	0
Subtotal Compensated by Purdue	143	131	132	123	123
Adjunct Faculty (Compensated External to Purdue)	0	0	0	0	0
<b>Total Faculty and Staff</b>	<b>143</b>	<b>131</b>	<b>132</b>	<b>123</b>	<b>123</b>

Source: Vice President for Human Resources

**Regional Campus Faculty and Staff by Gender**  
(for Fall in Academic Years 2008-09 through 2012-13)

	2008-09		2009-10		2010-11		2011-12		2012-13	
	Faculty	Staff	Faculty	Staff	Faculty	Staff	Faculty	Staff	Faculty	Staff
<b>Calumet</b>										
Men	282	241	289	276	298	272	295	258	294	255
Women	249	429	272	445	300	431	281	432	286	424
<i>Percent Women</i>	46.9%	64.0%	48.5%	61.7%	50.2%	61.3%	48.8%	62.6%	49.3%	62.4%
<b>Indiana-Purdue Fort Wayne<sup>1</sup></b>										
Men	476	297	497	337	526	338	557	352	567	364
Women	401	471	447	519	448	511	487	527	502	488
<i>Percent Women</i>	45.7%	61.3%	47.4%	60.6%	46.0%	60.2%	46.6%	60.0%	47.0%	57.3%
<b>North Central</b>										
Men	152	69	170	78	169	77	147	75	134	71
Women	139	143	150	155	154	155	146	148	153	145
<i>Percent Women</i>	47.8%	67.5%	46.9%	66.5%	47.7%	66.8%	49.8%	66.4%	53.3%	67.1%
<b>Statewide Technology</b>										
Men	83	19	70	17	72	15	71	14	71	12
Women	20	21	21	23	21	24	17	21	15	25
<i>Percent Women</i>	19.4%	52.5%	23.1%	57.5%	22.6%	61.5%	19.3%	60.0%	17.4%	67.6%

<sup>1</sup>Includes Purdue and Indiana University faculty and staff.

# Regional Campus Faculty<sup>1</sup> and Staff<sup>2</sup> by Race/Ethnicity<sup>3</sup>

(for Fall in Academic Years 2008-09 through 2012-13)

	2008-09		2009-10		2010-11		2011-12		2012-13	
	Faculty	Staff	Faculty	Staff	Faculty	Staff	Faculty	Staff	Faculty	Staff
<b>Calumet</b>										
American Indian or Alaska Native	1	3	1	2						
Asian, Hawaiian, or Pacific Islander	59	51	68	52						
Black or African American	28	91	31	105						
Hispanic or Latino	17	63	20	68						
White and Other	426	462	441	494						
American Indian or Alaska Native					2	0	1	0	1	0
Asian					67	94	64	79	65	59
Black or African American					34	102	31	98	30	109
Hispanic or Latino					24	68	26	77	25	84
Native Hawaiian or Other Pacific Islander					0	0	0	0	0	0
White					448	434	445	426	453	415
Two or More Races					0	1	0	2	0	7
Unknown					23	4	9	8	6	5
<b>Compensated Faculty and Staff</b>	<b>531</b>	<b>670</b>	<b>561</b>	<b>721</b>	<b>598</b>	<b>703</b>	<b>576</b>	<b>690</b>	<b>580</b>	<b>679</b>
<b>Minority<sup>3</sup></b>	<b>105</b>	<b>208</b>	<b>120</b>	<b>227</b>	<b>127</b>	<b>265</b>	<b>122</b>	<b>256</b>	<b>121</b>	<b>259</b>
<i>Percent Minority</i>	19.8%	31.0%	21.4%	31.5%	21.2%	37.7%	21.2%	37.1%	20.9%	38.1%
<b>Underrepresented Minority (URM)<sup>4</sup></b>	<b>46</b>	<b>157</b>	<b>52</b>	<b>175</b>	<b>60</b>	<b>171</b>	<b>58</b>	<b>176</b>	<b>56</b>	<b>199</b>
<i>Percent Underrepresented Minority (URM)<sup>4</sup></i>	8.7%	23.4%	9.3%	24.3%	10.0%	24.3%	10.1%	25.5%	9.7%	29.3%
<b>Indiana-Purdue Fort Wayne</b>										
American Indian or Alaska Native	6	10	7	12						
Asian, Hawaiian, or Pacific Islander	56	24	61	27						
Black or African American	20	46	22	52						
Hispanic or Latino	18	10	19	19						
White and Other	777	678	835	746						
American Indian or Alaska Native					8	8	8	9	8	10
Asian					67	30	74	24	74	27
Black or African American					29	44	29	49	26	47
Hispanic or Latino					17	21	22	21	26	22
Native Hawaiian or Other Pacific Islander					1	0	0	0	1	0
White					809	730	870	761	890	735
Two or More Races					1	6	2	10	2	7
Unknown					42	10	39	5	42	4
<b>Compensated Faculty and Staff</b>	<b>877</b>	<b>768</b>	<b>944</b>	<b>856</b>	<b>974</b>	<b>849</b>	<b>1,044</b>	<b>879</b>	<b>1,069</b>	<b>852</b>
<b>Minority<sup>3</sup></b>	<b>100</b>	<b>90</b>	<b>109</b>	<b>110</b>	<b>123</b>	<b>109</b>	<b>135</b>	<b>113</b>	<b>137</b>	<b>113</b>
<i>Percent Minority</i>	11.4%	11.7%	11.5%	12.9%	12.6%	12.8%	12.9%	12.9%	12.8%	13.3%
<b>Underrepresented Minority (URM)<sup>4</sup></b>	<b>44</b>	<b>66</b>	<b>48</b>	<b>63</b>	<b>56</b>	<b>77</b>	<b>61</b>	<b>86</b>	<b>63</b>	<b>84</b>
<i>Percent Underrepresented Minority (URM)<sup>4</sup></i>	5.0%	8.6%	5.1%	9.7%	5.8%	9.1%	5.8%	9.8%	5.9%	9.9%

<sup>1</sup>Faculty includes Tenured/Tenure Track, Non-Tenure Track, Lecturers, Post-Docs and Adjunct Faculty.

<sup>2</sup>Staff includes Administrative, Professional, Clerical, Service, and Graduate Student staff

<sup>3</sup>The race/ethnicity counts include international faculty and staff. Percent International is based upon visa and citizenship codes

<sup>4</sup>Underrepresented Minority includes any indication of American Indian or Alaska Native, Black or African American, Hispanic or Latino, or Native Hawaiian/Other Pacific Islanders. Including a break out of those from the Two or More Races Category

# Regional Campus Faculty<sup>1</sup> and Staff<sup>2</sup> by Race/Ethnicity<sup>3</sup>

(for Fall in Academic Years 2008-09 through 2012-13 - continued)

	2008-09		2009-10		2010-11		2011-12		2012-13	
	Faculty	Staff	Faculty	Staff	Faculty	Staff	Faculty	Staff	Faculty	Staff
<b>North Central</b>										
American Indian or Alaska Native	0	0	0	0						
Asian, Hawaiian, or Pacific Islander	15	7	17	6						
Black or African American	4	7	7	10						
Hispanic or Latino	13	7	15	10						
White and Other	259	191	281	207						
American Indian or Alaska Native					0	0	0	0	0	0
Asian					15	6	15	5	17	5
Black or African American					10	10	12	9	8	12
Hispanic or Latino					14	9	7	8	6	9
Native Hawaiian or Other Pacific Islander					0	0	1	0	1	0
White					274	202	246	196	247	187
Two or More Races					2	0	2	1	0	1
Unknown					8	5	10	4	8	2
<b>Compensated Faculty and Staff</b>	<b>291</b>	<b>212</b>	<b>320</b>	<b>233</b>	<b>323</b>	<b>232</b>	<b>293</b>	<b>223</b>	<b>287</b>	<b>216</b>
<b>Minority<sup>3</sup></b>	<b>32</b>	<b>21</b>	<b>39</b>	<b>26</b>	<b>41</b>	<b>25</b>	<b>37</b>	<b>23</b>	<b>32</b>	<b>27</b>
<i>Percent Minority</i>	11.0%	9.9%	12.2%	11.2%	12.7%	10.8%	12.6%	10.3%	11.2%	12.5%
<b>Underrepresented Minority (URM)<sup>4</sup></b>	<b>17</b>	<b>14</b>	<b>22</b>	<b>20</b>	<b>25</b>	<b>19</b>	<b>22</b>	<b>18</b>	<b>15</b>	<b>22</b>
<i>Percent Underrepresented Minority (URM)<sup>4</sup></i>	5.8%	6.6%	6.9%	8.6%	7.7%	8.2%	7.5%	8.1%	5.2%	10.2%
<b>Statewide Technology</b>										
American Indian or Alaska Native	1	1	1	1						
Asian, Hawaiian, or Pacific Islander	4	1	4	0						
Black or African American	1	1	0	0						
Hispanic or Latino	1	0	0	0						
White and Other	96	37	86	39						
American Indian or Alaska Native					0	0	0	0	0	0
Asian					4	1	2	1	2	1
Black or African American					1	0	0	0	0	0
Hispanic or Latino					0	0	0	0	1	0
Native Hawaiian or Other Pacific Islander					0	0	0	0	0	0
White					87	37	84	33	83	35
Two or More Races					0	1	0	1	0	1
Unknown					1	0	2	0	0	0
<b>Compensated Faculty and Staff</b>	<b>103</b>	<b>40</b>	<b>91</b>	<b>40</b>	<b>93</b>	<b>39</b>	<b>88</b>	<b>35</b>	<b>86</b>	<b>37</b>
<b>Minority<sup>3</sup></b>	<b>7</b>	<b>3</b>	<b>5</b>	<b>1</b>	<b>5</b>	<b>2</b>	<b>2</b>	<b>2</b>	<b>3</b>	<b>2</b>
<i>Percent Minority</i>	6.8%	7.5%	5.5%	2.5%	5.4%	5.1%	2.3%	5.7%	3.5%	5.4%
<b>Underrepresented Minority (URM)<sup>4</sup></b>	<b>3</b>	<b>2</b>	<b>1</b>	<b>1</b>	<b>1</b>	<b>1</b>	<b>0</b>	<b>1</b>	<b>1</b>	<b>1</b>
<i>Percent Underrepresented Minority (URM)<sup>4</sup></i>	2.9%	5.0%	1.1%	2.5%	1.1%	2.6%	0.0%	2.9%	1.2%	2.7%

<sup>1</sup>Faculty includes Tenured/Tenure Track, Non-Tenure Track, Lecturers, Post-Docs and Adjunct Faculty.

<sup>2</sup>Staff includes Administrative, Professional, Clerical, Service, and Graduate Student staff.

<sup>3</sup>The race/ethnicity counts include international faculty and staff. Percent International is based upon visa and citizenship codes.

<sup>4</sup>Underrepresented Minority includes any indication of American Indian or Alaska Native, Black or African American, Hispanic or Latino, or Native Hawaiian/Other Pacific Islanders. Including a break out of those from the Two or More Races Category

## Regional Campus Budgets by Source of Funds<sup>1, 2</sup>

(for Fiscal Years 2008-09 through 2012-13)

### Calumet

Fund Source	2008-09	2009-10	2010-11	2011-12	2012-13
Student Fees	\$44.1	\$47.6	\$51.2	\$53.7	\$55.2
State Appropriations:					
General Operating	28.2	27.0	26.7	26.8	26.8
Line Items	0.0	0.0	0.0	0.0	0.0
Debt Appropriations	1.6	1.5	1.5	1.5	1.5
Gifts, Grants and Contracts:					
Federal Sponsored Programs	3.3	4.7	8.7	7.5	5.9
Non-Federal Sponsored Programs	1.4	1.9	2.4	2.3	1.2
Gifts	0.3	0.3	0.3	0.4	0.4
Auxiliary Enterprises	5.9	7.6	7.0	7.1	7.1
Student Aid	16.6	19.4	25.5	25.6	24.3
Other Revenue:					
Facilities & Administrative Cost Recovery	0.3	0.3	0.3	0.8	0.8
Interest and Other Revenue	1.6	1.8	1.8	2.2	2.0
Other Restricted Income	3.0	3.0	4.2	3.8	4.7
<b>Total</b>	<b>\$106.3</b>	<b>\$115.1</b>	<b>\$129.6</b>	<b>\$131.7</b>	<b>\$129.9</b>

### Indiana-Purdue Fort Wayne

Fund Source	2008-09	2009-10	2010-11	2011-12	2012-13
Student Fees	\$50.2	\$54.6	\$61.6	\$64.9	\$64.8
State Appropriations:					
General Operating	38.4	37.4	37.8	38.6	38.6
Line Items	0.0	0.0	0.0	0.0	0.0
Debt Appropriations	5.3	6.0	6.0	5.4	5.4
Gifts, Grants and Contracts:					
Federal Sponsored Programs	0.8	0.7	1.5	1.3	1.0
Non-Federal Sponsored Programs	1.2	1.4	1.1	1.3	1.1
Gifts	2.2	2.5	2.4	2.9	3.1
Auxiliary Enterprises	12.8	12.3	14.7	16.0	16.1
Student Aid	24.5	30.4	37.8	43.4	41.8
Other Revenue:					
Facilities & Administrative Cost Recovery	0.1	0.1	0.2	0.2	0.2
Interest and Other Revenue	1.5	2.3	2.3	3.2	3.4
Other Restricted Income	7.9	9.5	11.0	13.5	11.6
<b>Total</b>	<b>\$144.9</b>	<b>\$157.2</b>	<b>\$176.4</b>	<b>\$190.7</b>	<b>\$187.1</b>

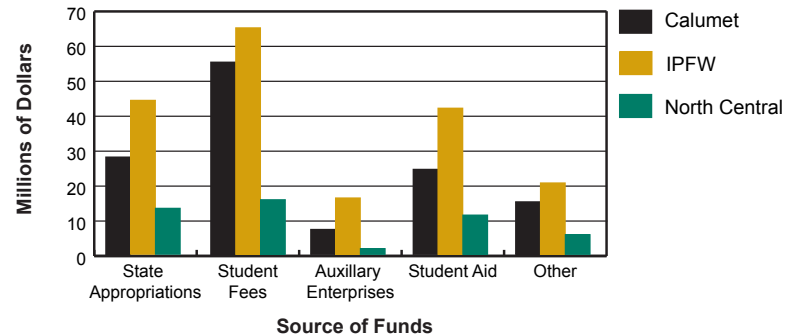
<sup>1</sup>In millions of dollars.

<sup>2</sup>Statewide Technology budget is included in the West Lafayette campus figures.

### North Central

Fund Source	2008-09	2009-10	2010-11	2011-12	2012-13
Student Fees	\$14.1	\$15.1	\$15.9	\$16.5	\$15.6
State Appropriations:					
General Operating	12.0	11.8	12.3	13.1	13.1
Line Items	0.0	0.0	0.0	0.0	0.0
Debt Appropriations	0.0	0.0	0.0	0.0	0.0
Gifts, Grants and Contracts:					
Federal Sponsored Programs	0.7	0.6	0.7	0.7	0.7
Non-Federal Sponsored Programs	0.2	0.1	0.0	0.0	0.0
Gifts	0.2	0.1	0.1	0.1	0.2
Auxiliary Enterprises	1.2	1.5	1.5	1.6	1.6
Student Aid	7.7	7.5	10.8	12.2	11.2
Other Revenue:					
Facilities & Administrative Cost Recovery	0.1	0.1	0.1	0.1	0.1
Interest and Other Revenue	0.9	1.2	1.2	1.2	1.2
Other Restricted Income	2.4	3.3	3.9	3.4	3.4
<b>Total</b>	<b>\$39.5</b>	<b>\$41.3</b>	<b>\$46.5</b>	<b>\$48.9</b>	<b>\$47.1</b>

## Regional Campuses' Budgets by Source of Funds 2012-13



## Regional Campus Debt of Graduating Students

(for Academic Years 2007-08 through 2011-12)

	2007-08	2008-09	2009-10	2010-11	2011-12
<b>Calumet</b>					
Percent of Graduating Students with Debt:					
Undergraduate	58.0%	57.0%	61.0%	59.0%	59.0%
Graduate	36.0%	40.0%	41.0%	31.0%	43.0%
Average Total Debt of Graduating Students with Debt:					
Undergraduate	\$18,735	\$22,352	\$25,034	\$28,116	\$28,812
Graduate	\$26,690	\$30,388	\$30,507	\$32,020	\$37,693
<b>Indiana-Purdue Fort Wayne</b>					
Percent of Graduating Students with Debt:					
Undergraduate	62.0%	74.9%	70.9%	72.6%	73.1%
Graduate	42.2%	41.9%	50.6%	51.3%	54.8%
Average Total Debt of Graduating Students with Debt:					
Undergraduate	\$20,335	\$25,168	\$23,911	\$25,698	\$27,914
Graduate	\$33,917	\$27,238	\$30,668	\$35,753	\$39,535
<b>North Central</b>					
Percent of Graduating Students with Debt:					
Undergraduate	61.0%	60.8%	56.8%	57.8%	58.7%
Graduate		30.0%	30.3%	64.5%	52.6%
Average Total Debt of Graduating Students with Debt:					
Undergraduate	\$19,536	\$21,137	\$24,240	\$23,415	\$22,746
Graduate		\$17,737	\$18,090	\$21,971	\$22,252

Notes: Graduate includes masters and doctoral students.

This information excludes PLUS Loans (parent is borrower, not student).

**Regional Campus<sup>1</sup> Student Financial Aid Awards**  
(for Academic Years 2010-11 and 2011-12)

	2010-11 Undergraduate	2011-12 Undergraduate	Percent Change	2010-11 Grad/Prof Temp/Other	2011-12 Grad/Prof Temp/Other	Percent Change	2010-11 Total	2011-12 Total	Percent Change
<b>Calumet</b>									
Scholarships and Grants	\$25,525,631	\$23,982,301	-6.0%	\$320,315	\$311,883	-2.6%	\$25,845,946	\$24,294,184	-6.0%
Institutional/Statutory Fee Remissions	237,849	251,863	5.9%	1,859	0	-100.0%	239,708	251,863	5.1%
Loans	36,401,235	36,192,565	-0.6%	5,188,626	6,472,001	24.7%	41,589,861	42,664,566	2.6%
Employment and Employment Related	2,400,028	2,274,328	-5.2%	2,875,796	2,775,954	-3.5%	5,275,824	5,050,282	-4.3%
<b>Grand Total</b>	<b>\$64,564,743</b>	<b>\$62,701,057</b>	<b>-2.9%</b>	<b>\$8,386,596</b>	<b>\$9,559,838</b>	<b>14.0%</b>	<b>\$72,951,339</b>	<b>\$72,260,895</b>	<b>-0.9%</b>
<b>Indiana-Purdue Fort Wayne</b>									
Scholarships and Grants	\$42,387,018	\$41,032,672	-3.2%	\$231,905	\$151,733	-34.6%	\$42,618,923	\$41,184,405	-3.4%
Institutional/Statutory Fee Remissions	4,194,434	4,407,911	5.1%	48,066	36,363	-24.3%	4,242,500	4,444,274	4.8%
Loans	60,013,488	59,266,131	-1.2%	4,822,945	4,397,756	-8.8%	64,836,433	63,663,887	-1.8%
Employment and Employment Related	1,926,904	3,348,864	73.8%	2,504,396	1,416,421	-43.4%	4,431,300	4,765,285	7.5%
<b>Grand Total</b>	<b>\$108,521,844</b>	<b>\$108,055,578</b>	<b>-0.4%</b>	<b>\$7,607,312</b>	<b>\$6,002,273</b>	<b>-21.1%</b>	<b>\$116,129,156</b>	<b>\$114,057,851</b>	<b>-1.8%</b>
<b>North Central</b>									
Scholarships and Grants	\$12,206,745	\$11,031,626	-9.6%	\$23,446	\$11,453	-51.2%	\$12,230,191	\$11,043,079	-9.7%
Institutional/Statutory Fee Remissions	280,361	160,952	-42.6%	0	791	0.0%	280,361	161,743	-42.3%
Loans	16,278,187	15,921,478	-2.2%	492,739	434,882	-11.7%	16,770,926	16,356,360	-2.5%
Employment and Employment Related	494,729	528,707	6.9%	37,633	40,431	7.4%	532,362	569,138	6.9%
<b>Grand Total</b>	<b>\$29,260,022</b>	<b>\$27,642,763</b>	<b>-5.5%</b>	<b>\$553,818</b>	<b>\$487,557</b>	<b>-12.0%</b>	<b>\$29,813,840</b>	<b>\$28,130,320</b>	<b>-5.6%</b>

<sup>1</sup>Statewide Technology Financial Aid Awards are included in the West Lafayette campus figures.

Prof = Professional

Temp = Temporary



## Regional Campus Tuition and Fees<sup>1</sup>

(for Academic Years 2008-09 through 2012-13)

	2008-09 <sup>2</sup>	2009-10 <sup>2</sup>	2010-11 <sup>2</sup>	2011-12	2012-13
<b>Calumet</b>					
Resident Undergraduate	\$5,969	\$6,308	\$6,623	\$6,789	\$6,959
Nonresident Undergraduate	13,279	14,115	14,961	15,336	15,720
Resident Graduate	5,860	6,146	6,454	6,616	6,781
Nonresident Graduate	12,238	12,966	13,744	14,088	14,441
<b>Indiana-Purdue Fort Wayne</b>					
Resident Undergraduate	\$6,596	\$6,926	\$7,272	\$7,454	\$7,640
Nonresident Undergraduate	15,545	16,478	17,466	17,903	18,350
Resident Graduate	6,505	6,830	7,172	7,351	7,535
Nonresident Graduate	14,454	15,322	16,241	16,646	17,063
<b>North Central</b>					
Resident Undergraduate	\$6,080	\$6,384	\$6,704	\$6,872	\$7,044
Nonresident Undergraduate	14,205	15,057	15,960	16,359	16,769
Resident Graduate	5,910	6,205	6,515	6,678	6,845
Nonresident Graduate	13,054	13,836	14,666	15,034	15,409

<sup>1</sup>Assuming 30 credit hours for undergraduate students and 24 credit hours for graduate students for the academic year.

<sup>2</sup>Degree-seeking students who are continuously enrolled prior to the Fall 2006 term (Summer 2006 for North Central) were not charged the Repair and Rehabilitation Fee.

## Regional Campus Housing Rates<sup>1</sup>

(for Academic Year 2012-13)

<b>Calumet</b>	
	AY Rate
Individual lease per bed.....	\$5,170
<b>Indiana-Purdue Fort Wayne</b>	
Type of Accommodations	AY Rate
Four Bedroom/Two Bath.....	\$5,430
Four Bedroom/Four Bath.....	\$6,440
Three Bedroom/Two Bath Shared.....	\$4,740
Three Bedroom/Two Bath Private.....	\$5,430
Three Bedroom/Two Bath Single.....	\$7,990
Two Bedroom/Two Bath Deluxe.....	\$7,960
Two Bedroom/Two Bath.....	\$7,210
Two Bedroom/One Bath.....	\$6,090
One Bedroom/One Bath.....	\$8,490

<sup>1</sup>There is no student housing on the North Central campus.

## Regional Campus Extramural Awards and Research/ Sponsored Program Expenditures<sup>1</sup>

(for Fiscal Years 2007-08 through 2011-12)

<b>Calumet</b>					
<b>Extramural Awards</b>	<b>2007-08<sup>2</sup></b>	<b>2008-09<sup>2</sup></b>	<b>2009-10<sup>2</sup></b>	<b>2010-11<sup>2</sup></b>	<b>2011-12</b>
Awards by Source:					
Federal	\$3.0	\$7.2	\$10.5	\$8.5	\$2.7
Non-Federal	3.0	1.8	3.9	2.5	1.2
<b>Total Calumet Awards</b>	<b>\$6.0</b>	<b>\$9.0</b>	<b>\$14.4</b>	<b>\$11.0</b>	<b>\$3.9</b>
<b>Research &amp; Sponsored Program Expenditures</b>					
<b>by Source</b>					
Federal	\$4.4	\$4.7	\$6.1	\$5.8	\$9.9
Non-Federal	1.9	2.3	3.5	2.5	1.7
<b>Total Sponsor Expenditures</b>	<b>\$6.3</b>	<b>\$7.0</b>	<b>\$9.6</b>	<b>\$8.3</b>	<b>\$11.6</b>
Institutional (not including PRF/Purdue)	2.1	4.0	4.4	3.5	3.3
<b>Total Calumet Expenditures</b>	<b>\$8.4</b>	<b>\$11.0</b>	<b>\$14.0</b>	<b>\$11.8</b>	<b>\$14.9</b>
<b>Indiana-Purdue Fort Wayne</b>					
<b>Extramural Awards</b>	<b>2007-08<sup>2</sup></b>	<b>2008-09<sup>2</sup></b>	<b>2009-10<sup>2</sup></b>	<b>2010-11<sup>2</sup></b>	<b>2011-12</b>
Awards by Source:					
Federal	\$1.5	\$1.5	\$2.1	\$3.5	\$1.1
Non-Federal	2	1.9	2.4	2.0	2.7
<b>Total Fort Wayne Awards</b>	<b>\$3.5</b>	<b>\$3.4</b>	<b>\$4.5</b>	<b>\$5.5</b>	<b>\$3.8</b>
<b>Research &amp; Sponsored Program Expenditures</b>					
<b>by Source</b>					
Federal	\$1.7	\$1.3	\$1.8	\$2.5	\$1.9
Non-Federal	1.8	2.0	2.0	1.8	2.0
<b>Total Sponsor Expenditures</b>	<b>\$3.5</b>	<b>\$3.3</b>	<b>\$3.8</b>	<b>\$4.3</b>	<b>\$3.9</b>
Institutional (not including PRF/Purdue)	3.9	5.2	4.7	4.6	4.6
<b>Total Fort Wayne Expenditures</b>	<b>\$7.4</b>	<b>\$8.5</b>	<b>\$8.5</b>	<b>\$8.9</b>	<b>\$8.5</b>
<b>North Central</b>					
<b>Extramural Awards</b>	<b>2007-08<sup>2</sup></b>	<b>2008-09<sup>2</sup></b>	<b>2009-10<sup>2</sup></b>	<b>2010-11<sup>2</sup></b>	<b>2011-12</b>
Awards by Source:					
Federal	\$0.7	\$0.8	\$1.0	\$1.7	\$0.3
Non-Federal	0.3	0.3	0.1	0.0	0.1
<b>Total North Central Awards</b>	<b>\$1.0</b>	<b>\$1.1</b>	<b>\$1.1</b>	<b>\$1.7</b>	<b>\$0.4</b>
<b>Research &amp; Sponsored Program Expenditures</b>					
<b>by Source</b>					
Federal	\$0.7	\$0.8	\$0.6	\$0.6	\$0.7
Non-Federal	0.3	0.1	0.1	0.1	0.1
<b>Total Sponsor Expenditures</b>	<b>\$1.0</b>	<b>\$0.9</b>	<b>\$0.7</b>	<b>\$0.7</b>	<b>\$0.8</b>
Institutional (not including PRF/Purdue)	2.1	0.8	0.6	0.7	0.7
<b>Total North Central Expenditures</b>	<b>\$3.1</b>	<b>\$1.7</b>	<b>\$1.3</b>	<b>\$1.4</b>	<b>\$1.5</b>

<sup>1</sup>In millions of dollars.

<sup>2</sup>Support in collaboration with Advancement is included.