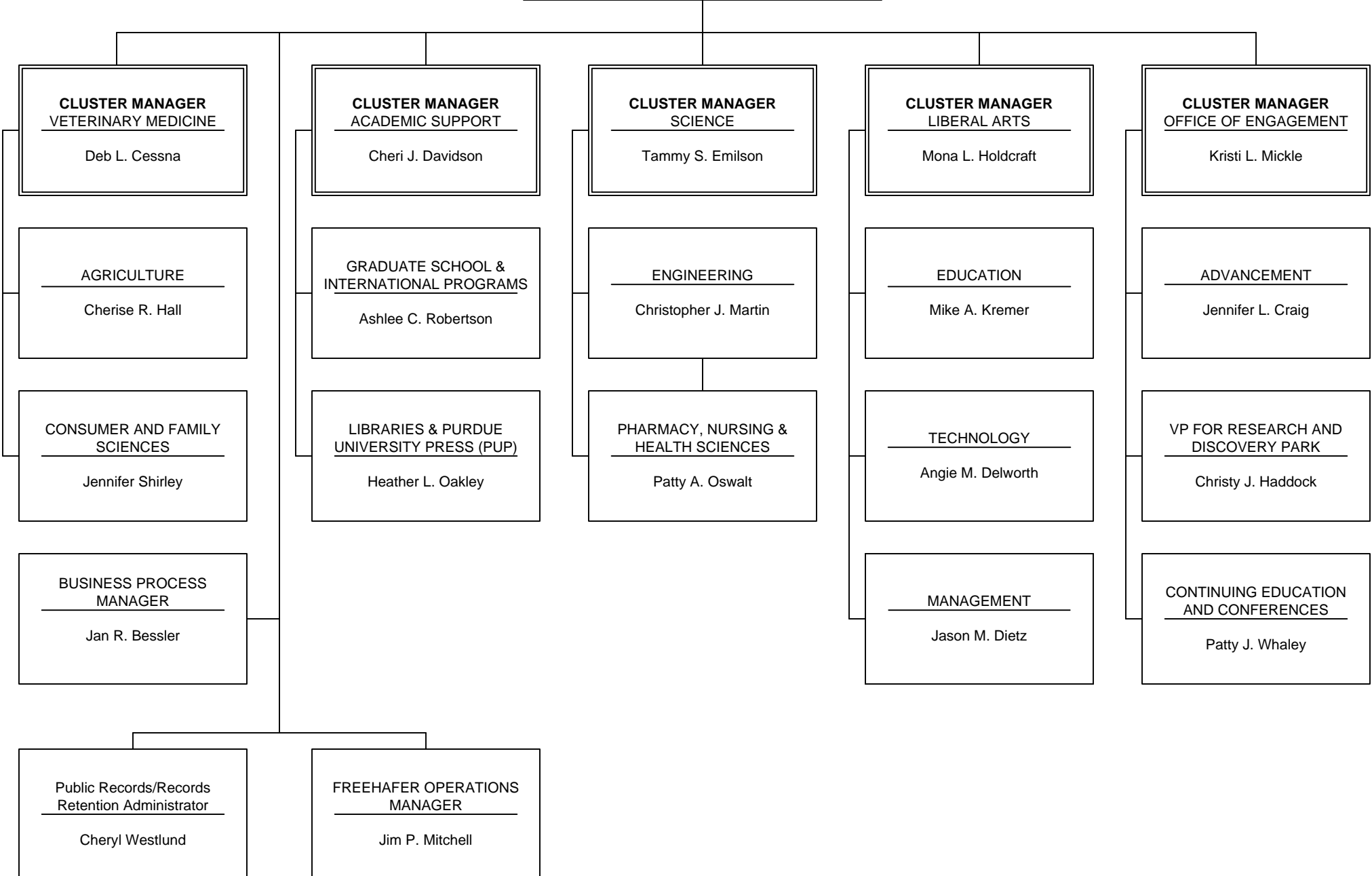
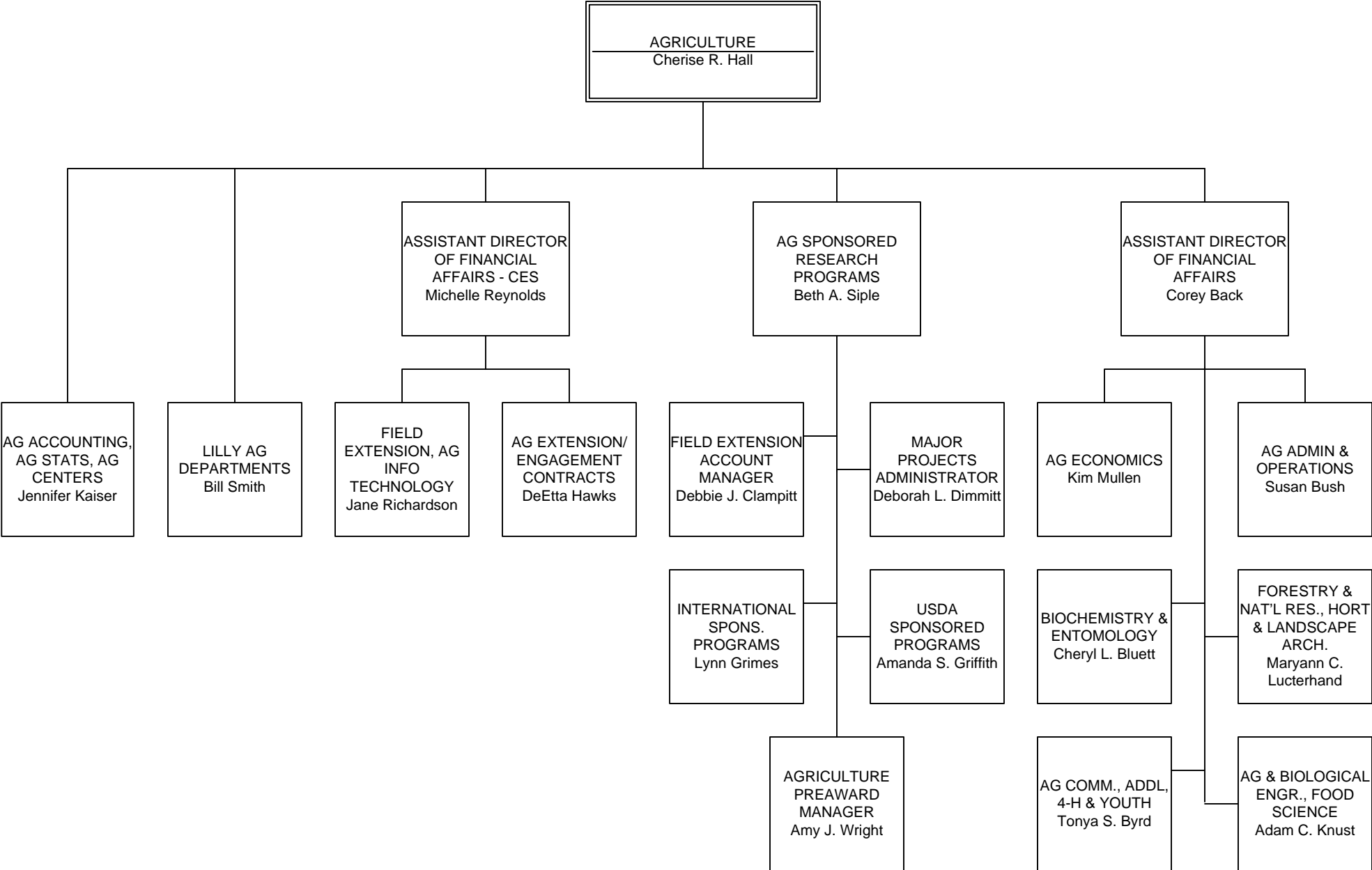


# CLUSTER MANAGERS AND DIRECTORS OF FINANCIAL AFFAIRS

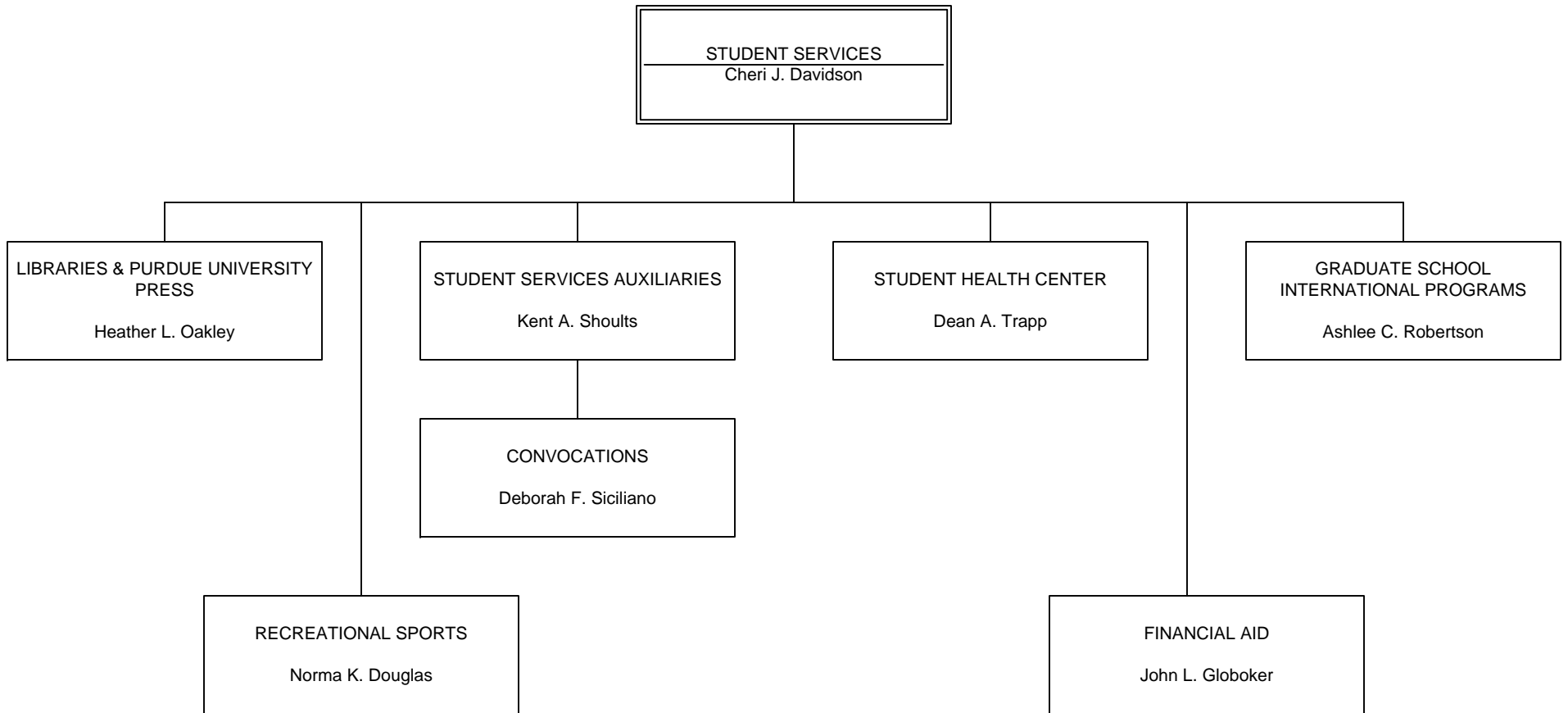
**DIRECTOR**  
Lucia M. Anderson



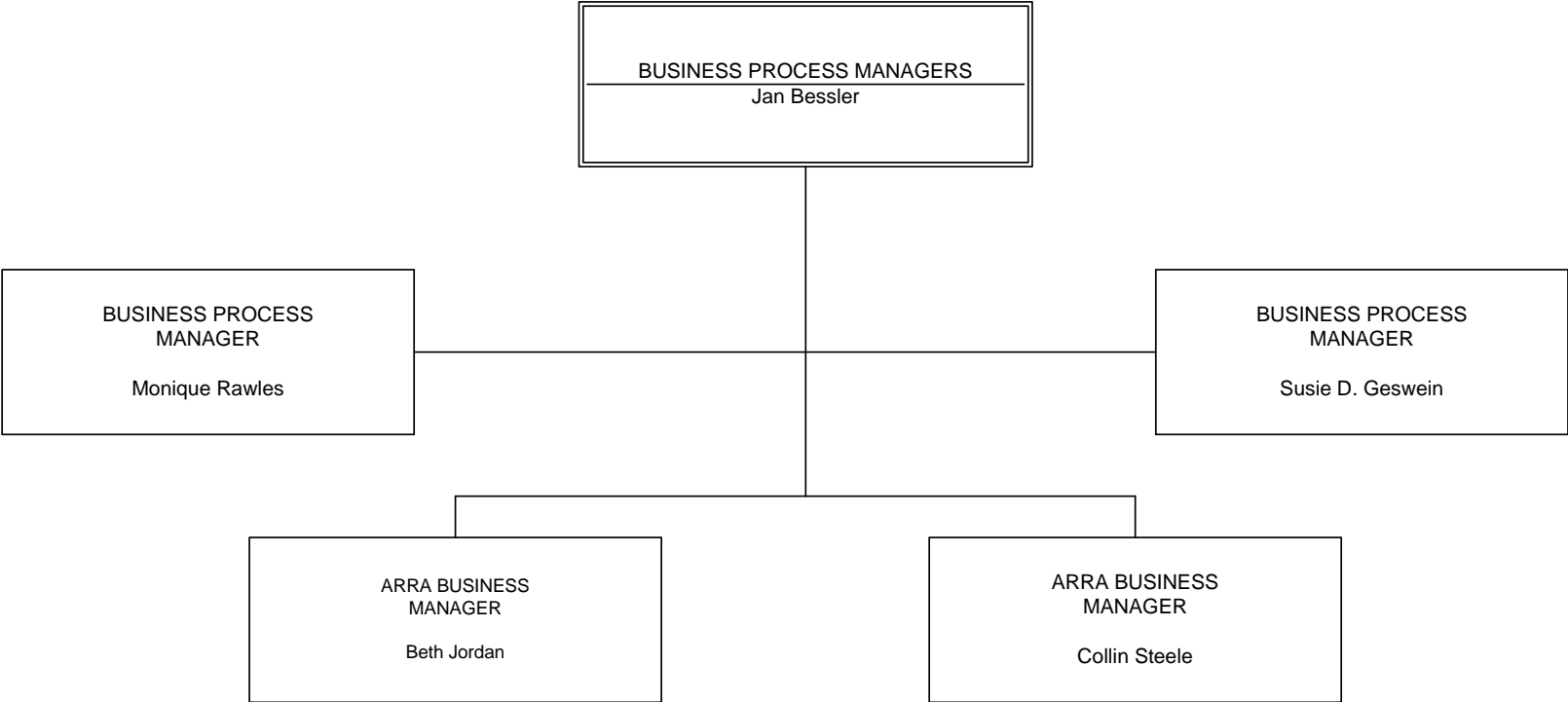
# COLLEGE OF AGRICULTURE



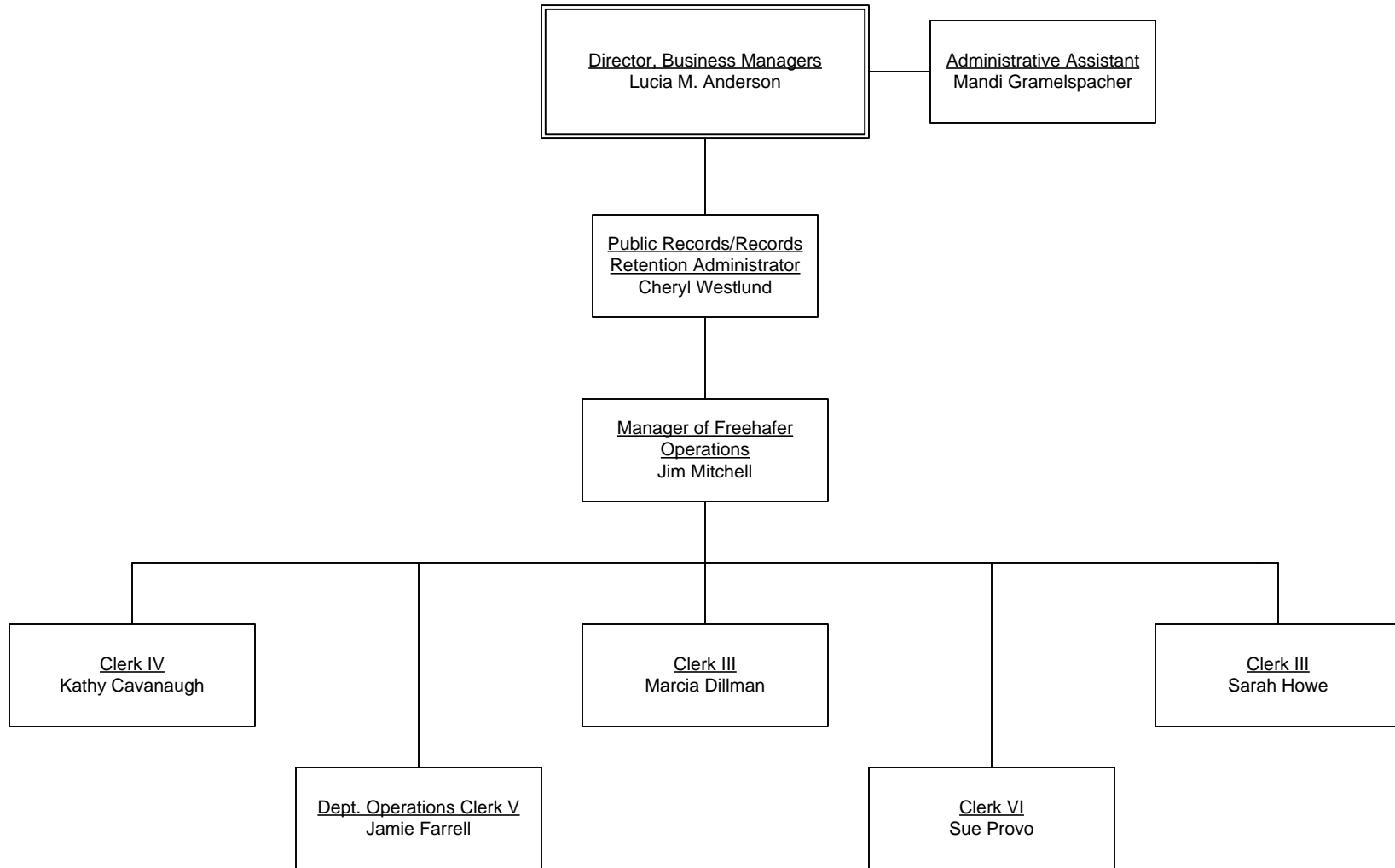
# BUSINESS SERVICES FOR ACADEMIC SUPPORT



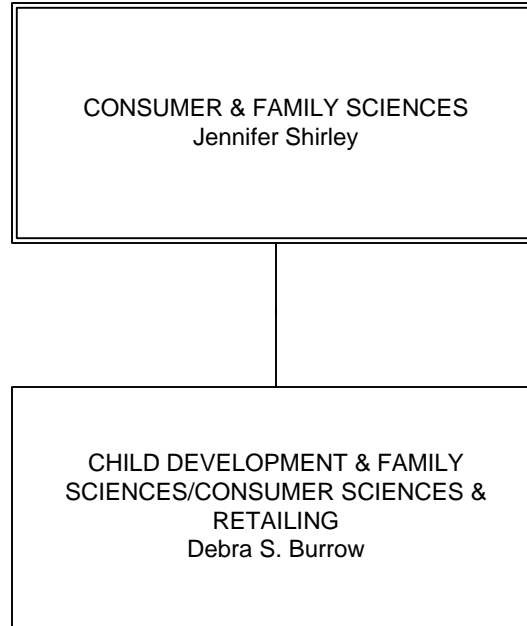
# BUSINESS PROCESS MANAGERS



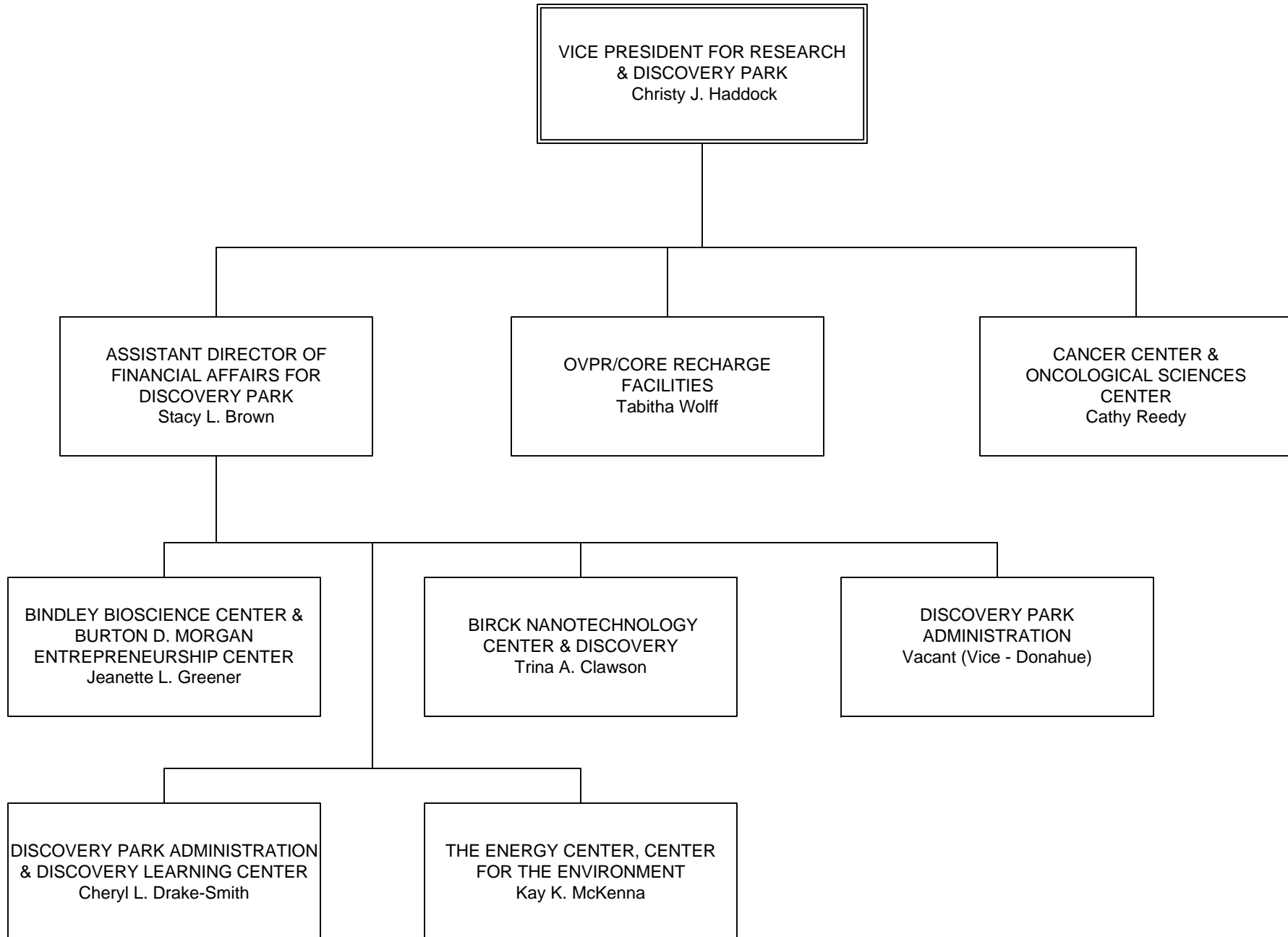
# CENTRAL FILES



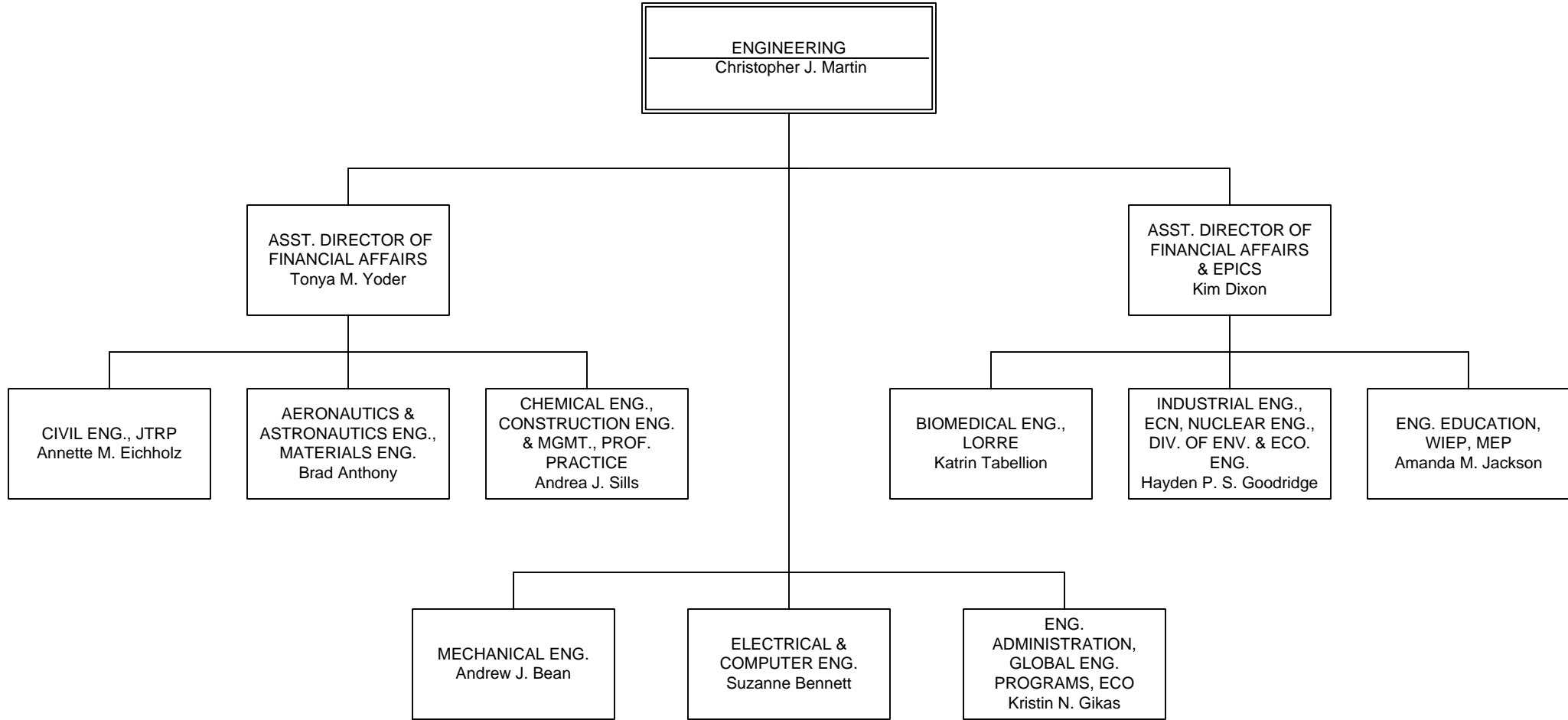
# CONSUMER AND FAMILY SCIENCES



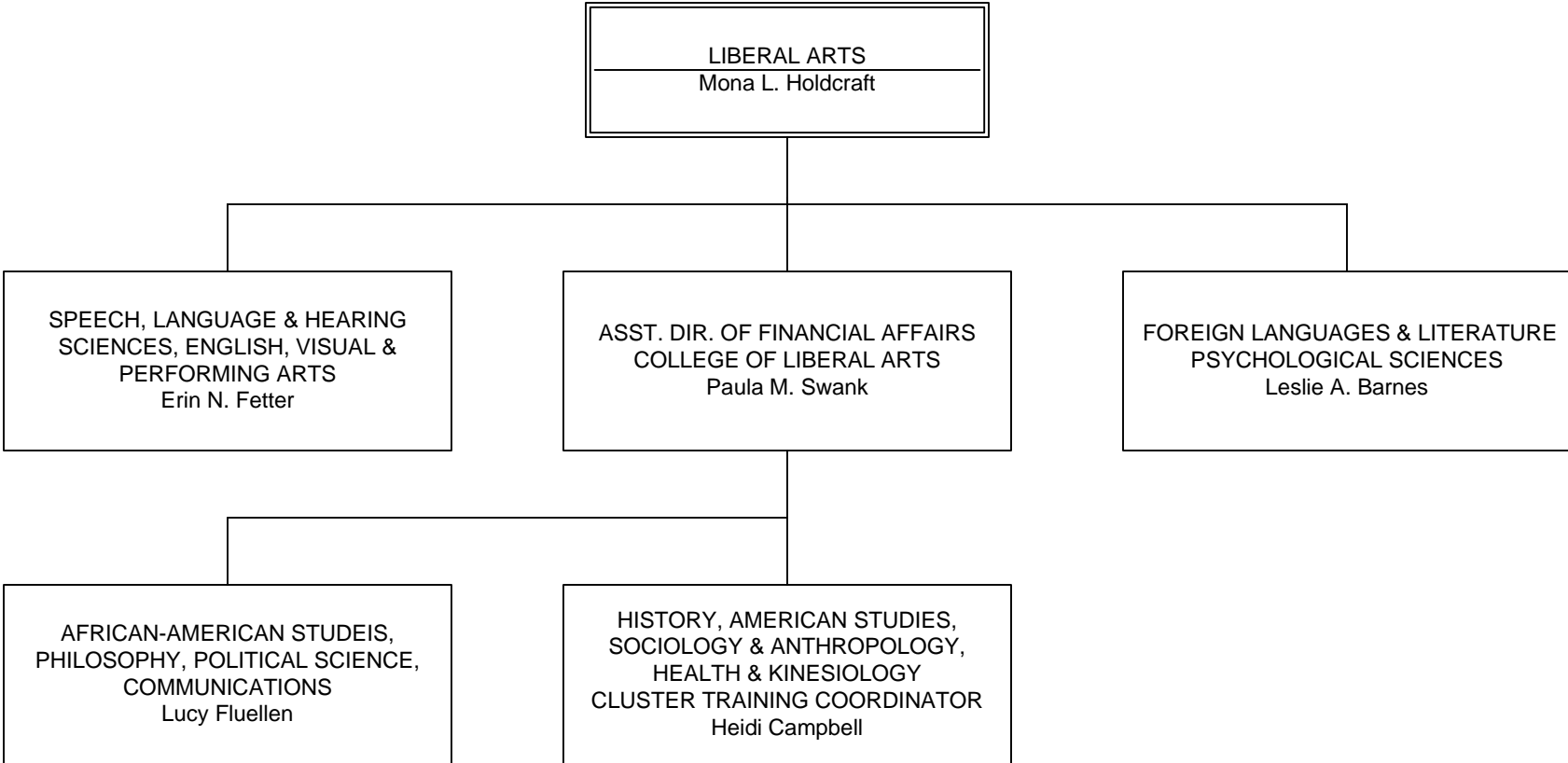
# VICE PRESIDENT FOR RESEARCH AND DISCOVERY PARK



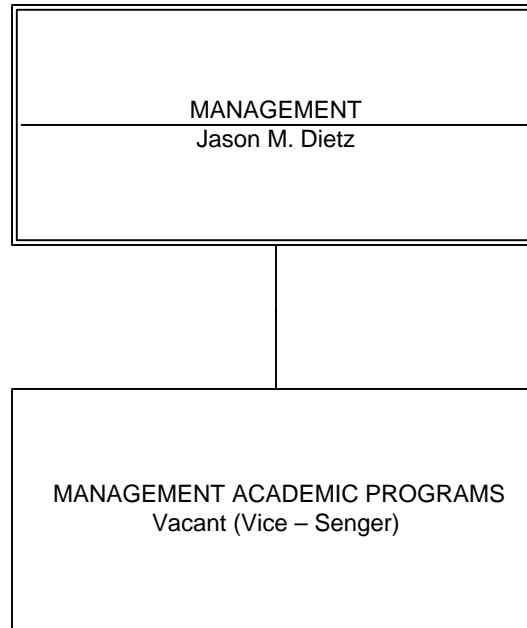
# COLLEGE OF ENGINEERING



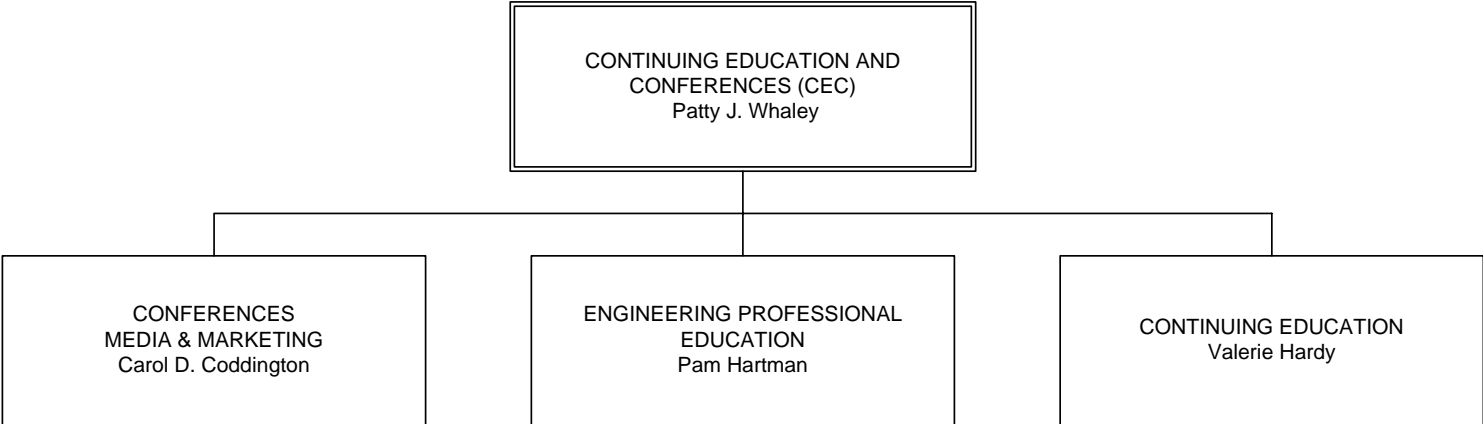
**COLLEGE OF LIBERAL ARTS**



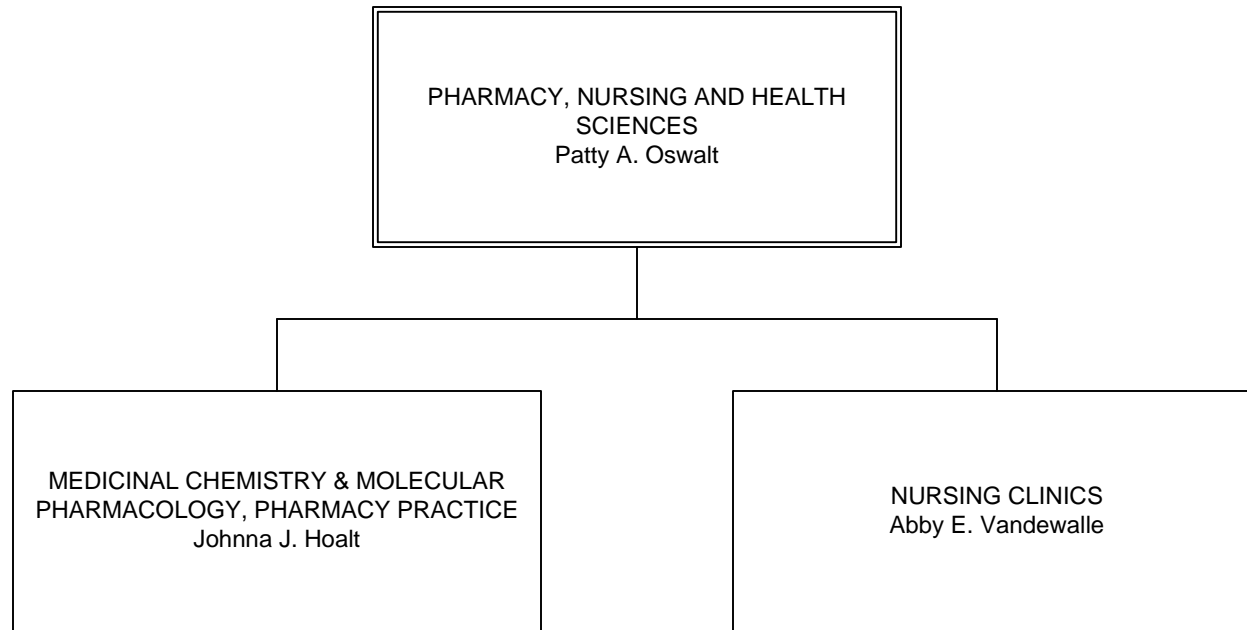
# SCHOOL OF MANAGEMENT



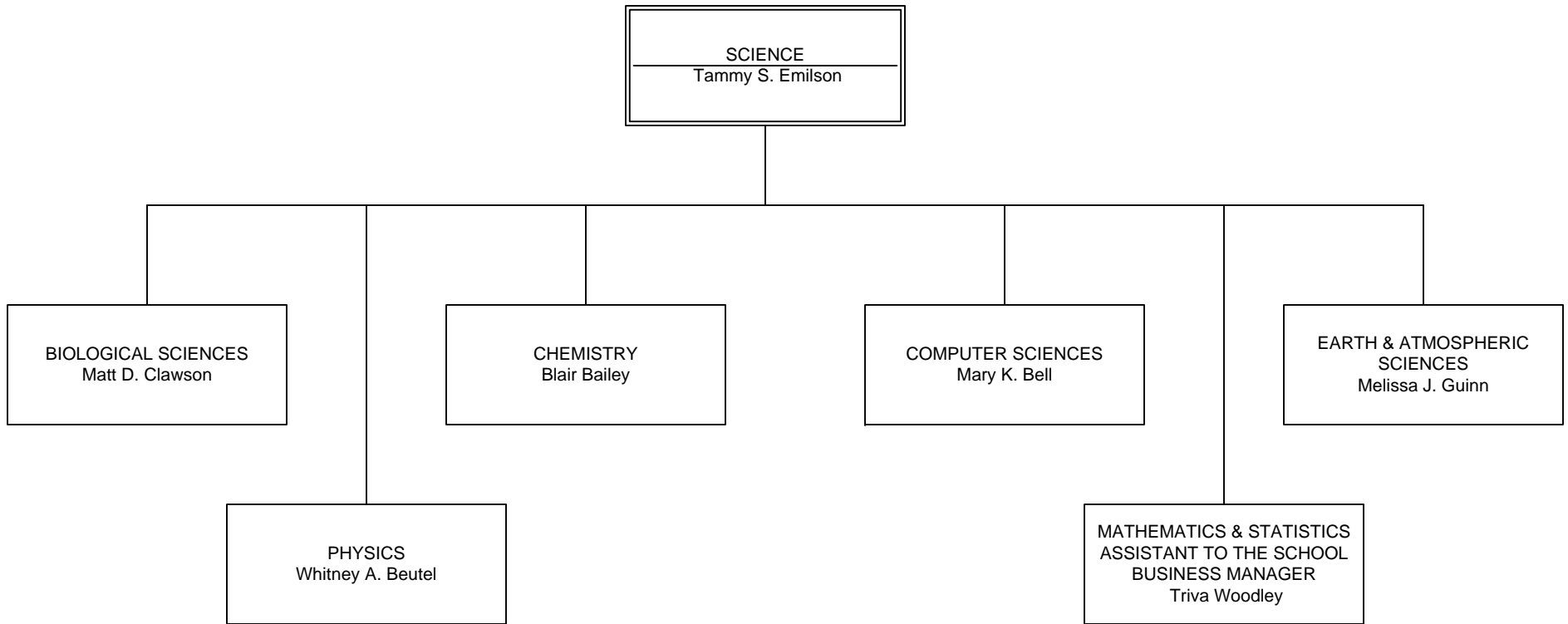
**CONTINUING EDUCATION AND CONFERENCES**



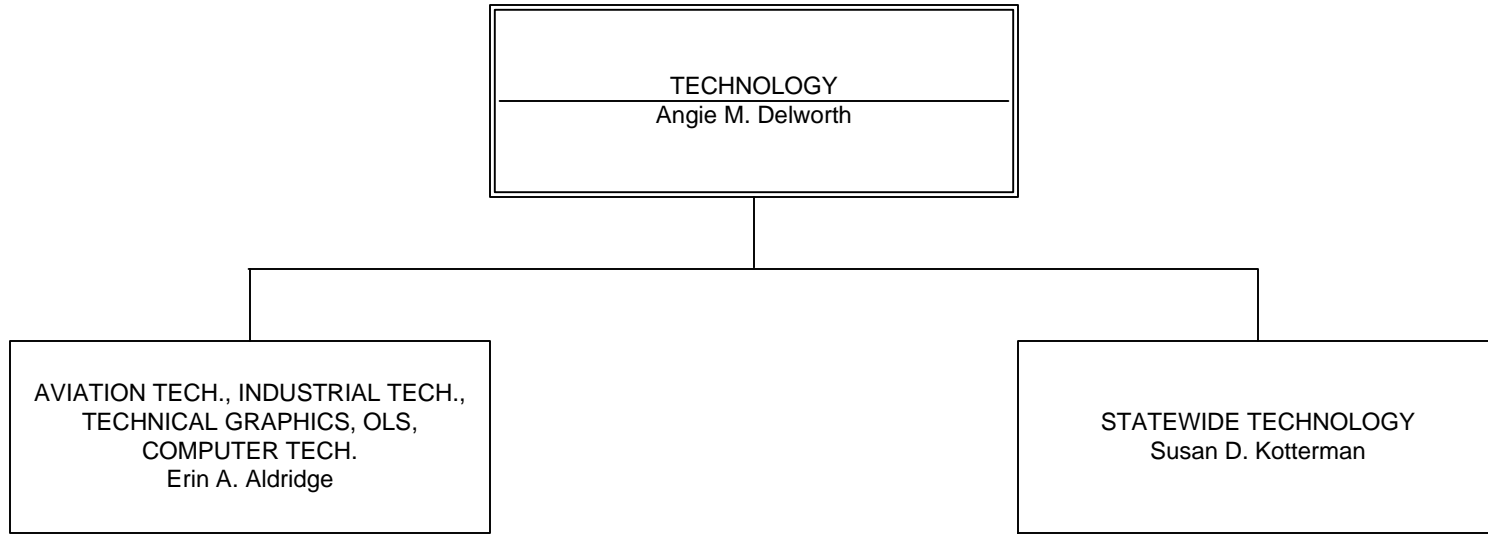
# COLLEGE OF PHARMACY



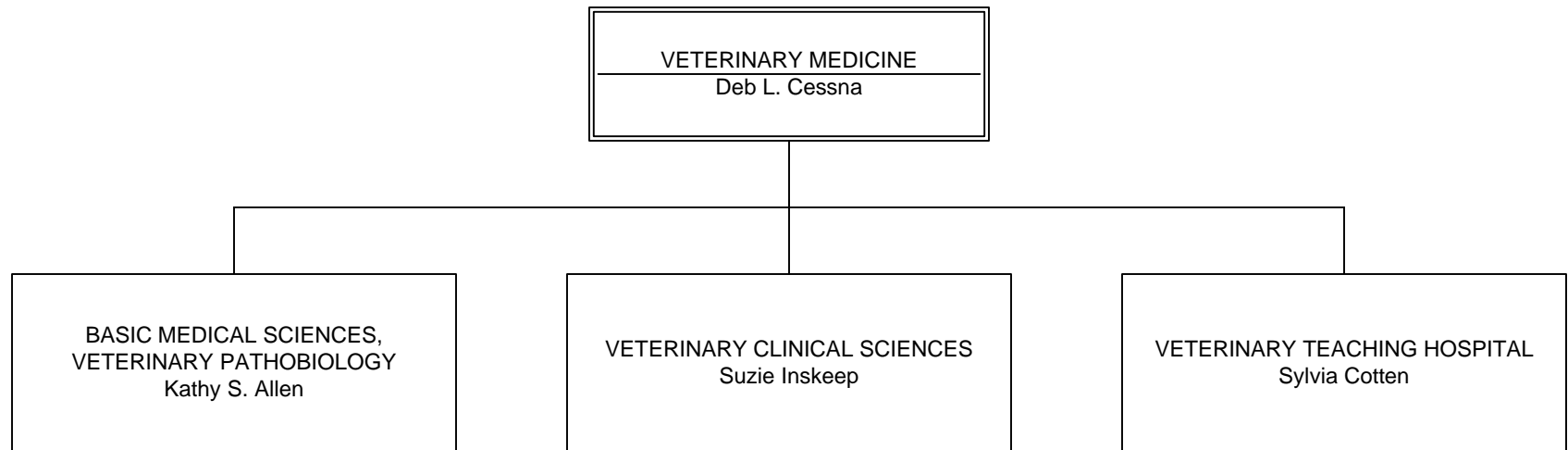
# COLLEGE OF SCIENCE



# COLLEGE OF TECHNOLOGY



# SCHOOL OF VETERINARY MEDICINE



## VICE PRESIDENT FOR ENGAGEMENT

